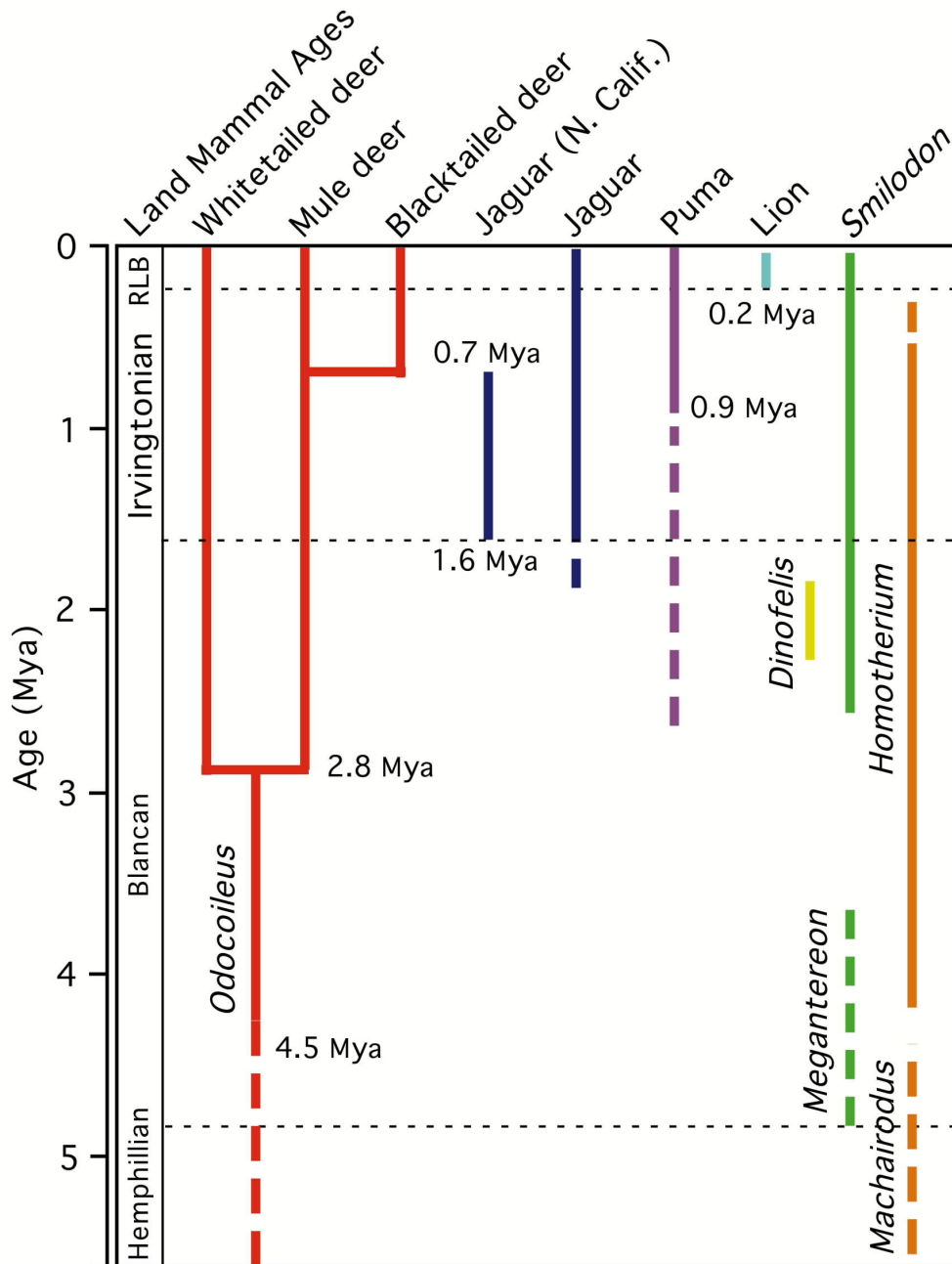


Time Scale of Deer and Felid Predator Sympatry in North America



Supplementary Figure: Time scale of sympatry of *Odocoileus* deer and felid predators since the late Miocene. Horizontal dashed lines indicate transitions in North American land mammal ages. Vertical colored lines characterize possible progenitors of later species. Note the million year time frame that mule deer were likely sympatric with jaguars until 0.7 Mya when the onset of drainage of the Sacramento River created a barrier to gene flow of terrestrial mammals along the California coast, leading to divergence of mule deer and blacktailed deer as separate subspecies of *Odocoileus hemionus*.