

This is an electronic appendix to the paper by Gaubert & Veron 2003 Exhaustive sample set among Viverridae reveals the sister-group of felids: the linsangs as a case of extreme morphological convergence within Feliformia. *Proc. R. Soc. Lond. B* **270**, 2523–2530. (DOI 10.1098/rspb.2003.2521.)

Electronic appendices are refereed with the text. However, no attempt is made to impose a uniform editorial style on the electronic appendices.

Electronic Appendix A. Area mapping using MacClade (4) and Bremer’s method (5). Figure 5 illustrates gains and losses under forward and reverse Camin-Sokal parsimony for area “Africa”.

Figure 4

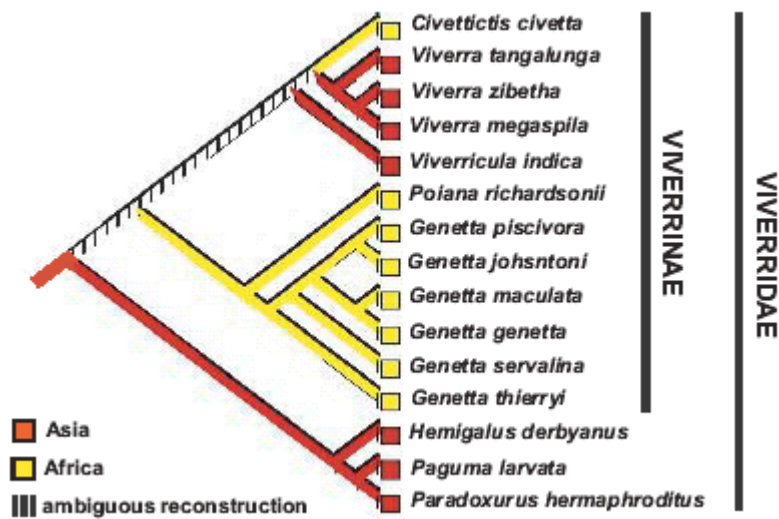


Figure 5

