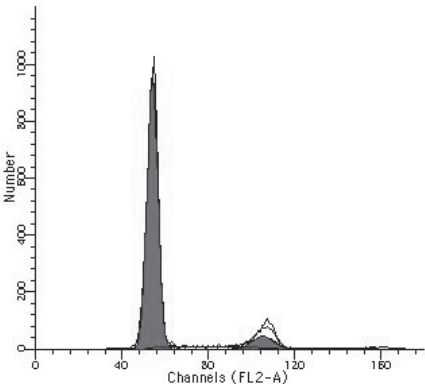
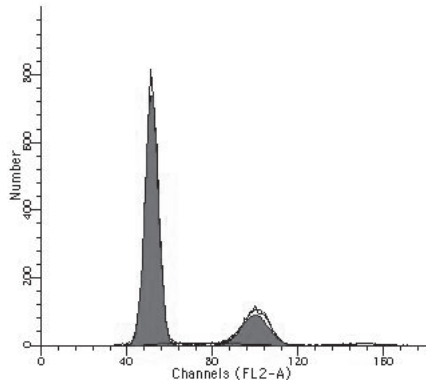


Control siRNA



G0/G1	85.50 +/- 0.50 %
G2/M	8.54 +/- 1.61 %
S	6.00 +/- 1.30 %

WTAP siRNA



G0/G1	75.77 +/- 2.00 % **
G2/M	20.67 +/- 1.79 % **
S	3.84 +/- 0.75 %