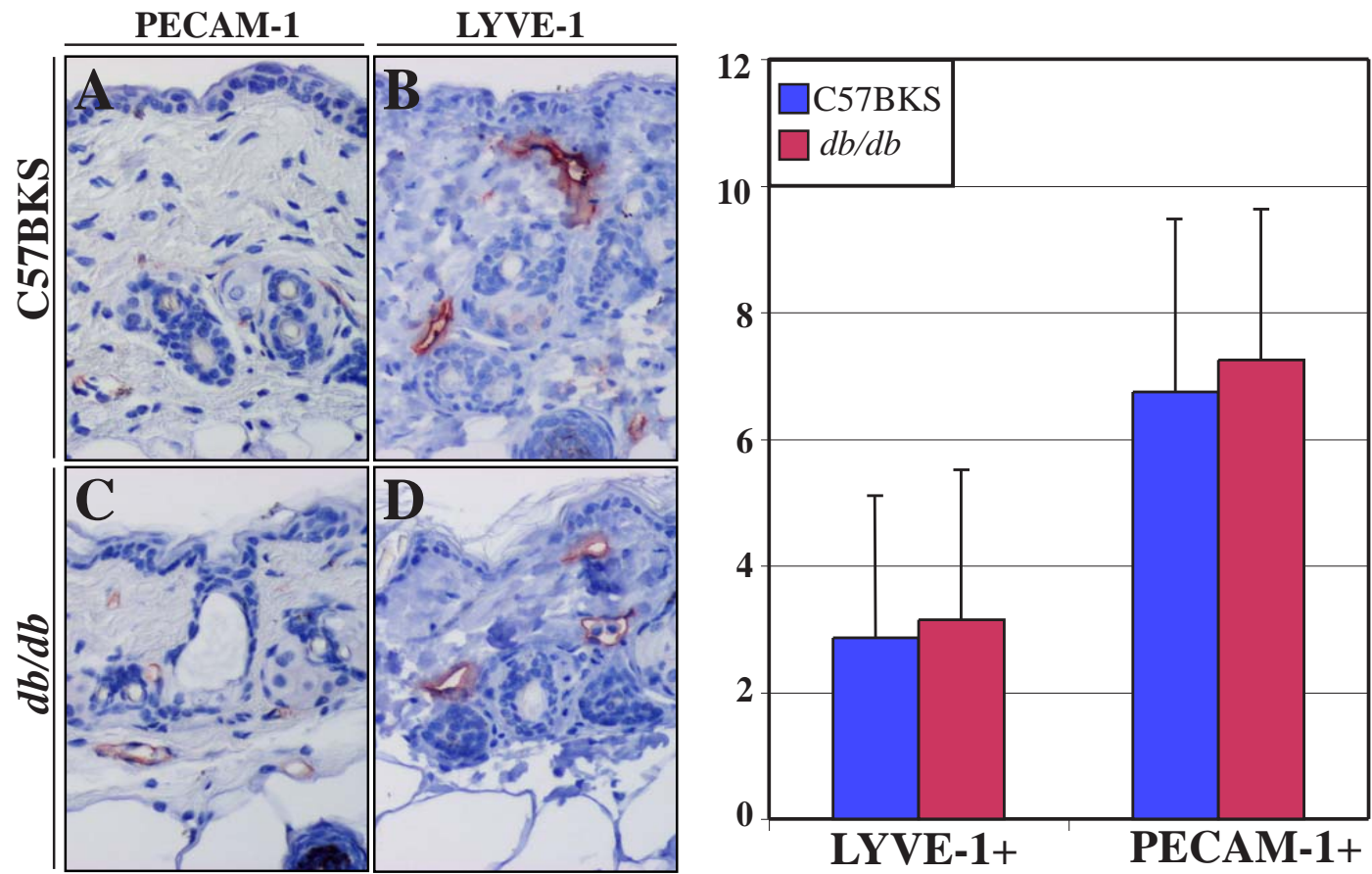
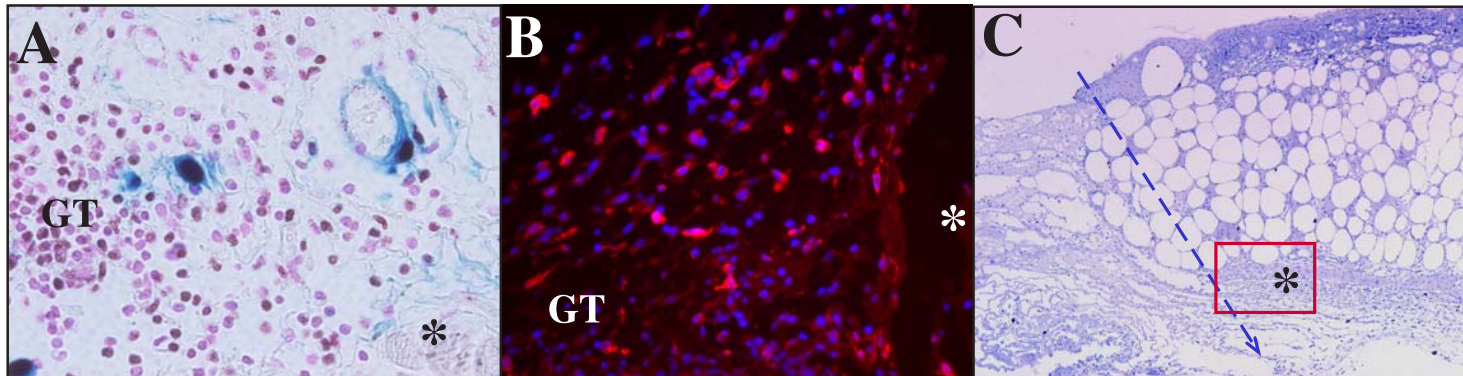


Supplementary Figure 1. Normal skin blood- and lymphatic vessels in *db/db* mice compared to the control C57BKS mice. Sections of unwounded skin were stained for LYVE-1 and PECAM-1 (red in **A-D**). Quantitative analysis of the blood and lymphatic vessels. Scale bars: 100 μ m.

Supplementary Figure 2. Adenoviral expression in the wound edge on day 6. Expression of the LacZ adenoviruses is localized to the wound edge (blue in **A**), next to the granulation tissue (GT in **A**) and *m. panniculus carnosum* (asterisk), which represents the original wound edge. VEGF-C expression (red in **B**) localizes similarly to the wound edge in AdVEGF-C treated wounds. Dashed blue line in **C** represents the original edge of the incision and the rectangle (red) the area of magnification in **A-B**.



Saaristo et al., Supplementary Figure 1



Saaristo et al., Supplementary figure 2