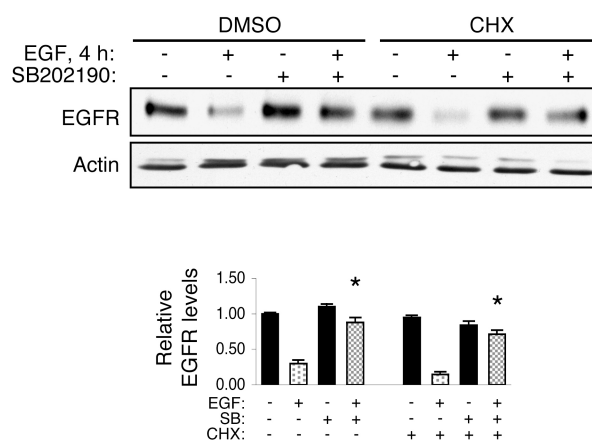


Supplementary Figure 1.



Supplementary Figure 1. p38 inhibition does not affect EGFR synthesis rates. To distinguish between a p38 effect on new receptor synthesis versus signaling or degradation events, YAMC cells were exposed to EGF for 4 h in the absence or presence of SB202190 and the protein synthesis inhibitor cycloheximide (10 μ g/ml, 1 h pretreatment). Whole cell lysates were prepared and subjected to Western blot analysis for EGFR. Densitometry shows averaged results from 3 experiments. *, $p < 0.0001$ vs. EGF alone. Blockade of protein synthesis did not abrogate SB202190-mediated preservation from ligand-induced EGFR loss.