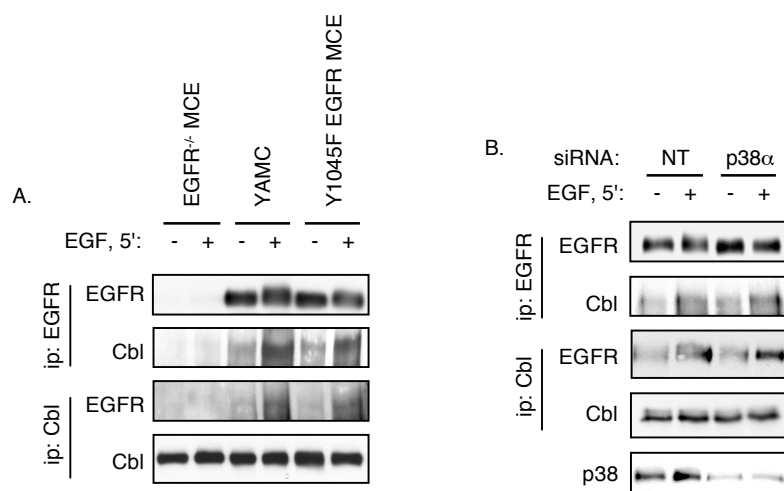


## Supplementary Figure 2.



**Supplementary Figure 2. p38 blockade does not abrogate association of EGFR with Cbl in mouse colon epithelial cells.** (A) As control for immunoprecipitation specificity, EGFR and Cbl were recovered from EGFR<sup>-/-</sup> MCE, YAMC, and Y1045F EGFR add-back cells, and immunocomplexes were subjected to Western blot analysis for EGFR and Cbl. No association was detected in EGFR<sup>-/-</sup> MCE cells. In agreement with reports from other systems (Ravid et al., 2004; Oksvold et al., 2003), Y1045F EGFR still associated with Cbl after EGF stimulation, despite being defective in Cbl phosphorylation (see Fig. 7). (B) To confirm our results obtained using SB202190 (Fig. 2), YAMC cells were transfected with non-targeting (NT) control or p38 $\alpha$ -directed siRNA and subjected to the same analysis as in (A). Similar to the results shown in Fig. 2, EGF still stimulated EGFR/Cbl association after p38 knockdown, despite blockade of EGFR Y1045 phosphorylation and Cbl activation (See Fig. 2F).