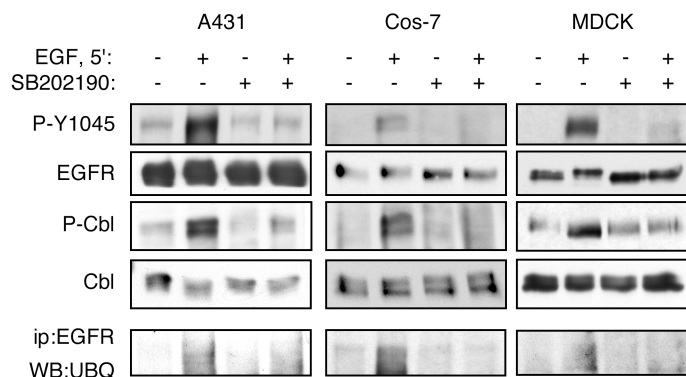


## Supplementary Figure 3.



**Supplementary Figure 3. p38 inhibition blocks Cbl-mediated EGFR degradation in multiple cell types.** A431, Cos-7, and MDCK cells were exposed to EGF for 5 min (A431, 100 ng/ml; Cos-7 and MDCK, 10 ng/ml) in the presence or absence of 10  $\mu$ M SB202190 (30 min pretreatment; inhibitor remained in culture during EGF application). Western blot analysis of whole cell lysates was performed using antibodies specific to P-Y1045 EGFR, total EGFR, P-Cbl, and total Cbl (top four rows). EGFR was immunoprecipitated from cells and immunocomplexes were subjected to Western blot analysis for ubiquitin (bottom row). EGF-stimulated EGFR phosphorylation on Y1045, Cbl phosphorylation, and EGFR ubiquitinylation were blocked by the p38 inhibitor in all three cell lines, in agreement with blockade of ligand-induced receptor downregulation shown in Figure 1.