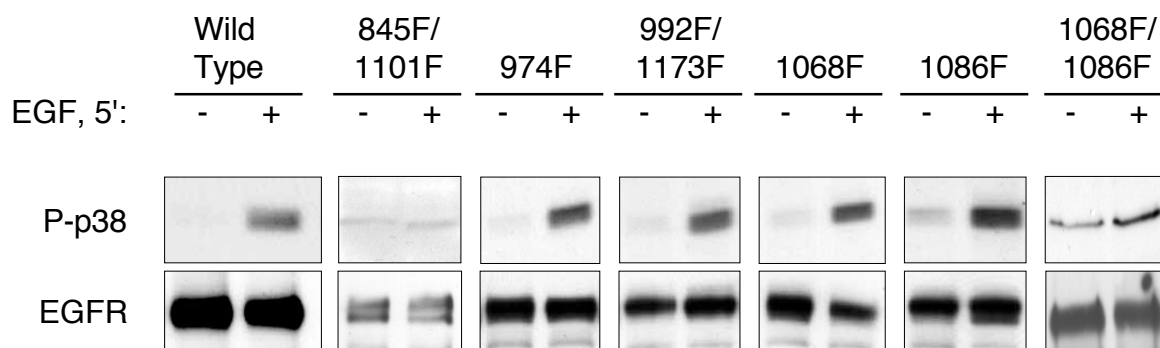


Supplementary Figure 4.



Supplementary Figure 4. p38 activation by EGFR point mutants. EGFR^{-/-} MCE cells transfected with indicated Y>F EGFR mutants were exposed to EGF (10 ng/ml) for 5 min. Whole cell lysates were prepared and subjected to Western blot analysis for EGFR levels and phospho (active)-p38. Only an EGFR construct harboring mutations in the Src target sites Y845/Y1101 was deficient in p38 activation.