

Figure W1. Western blot analyses illustrating the phosphorylation of selected downstream effectors of c-Src in indicated HCT116 clones grown for 24 hours in the presence or in the absence of induction. Results are representative of at least two independent cell preparations.

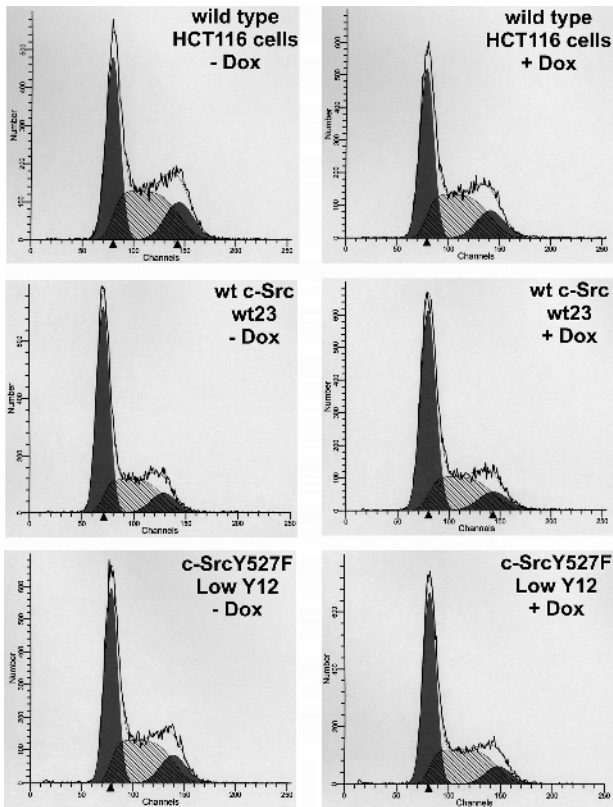


Figure W2. Cell cycle profiles of parental HCT116 cells, HCT116 LucwtSrc cells (clone wt23), and HCT116 Luc-Src527F Low cells (clone LowY12) obtained after 24 hours of growth in the presence or in the absence of Dox. Data are representative of three independent experiments.

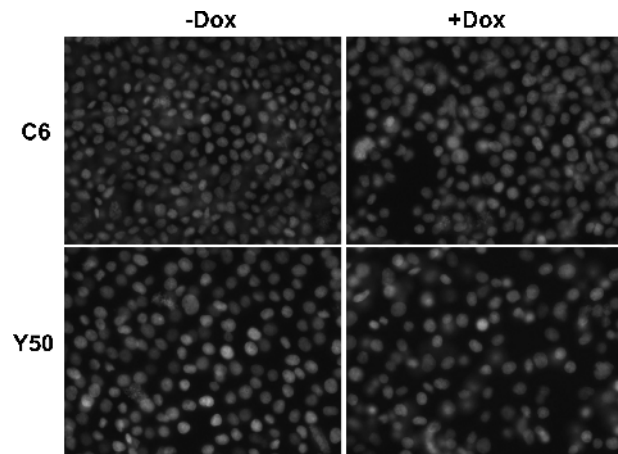


Figure W3. Representative pictures showing lack of apoptotic nuclei among HCT116 Luc-Src527F cells (clone High Y50) and HCT116 Luc-only control cells (clone Luc C6) irrespective of Dox induction. Similar results have been obtained with other clones tested.

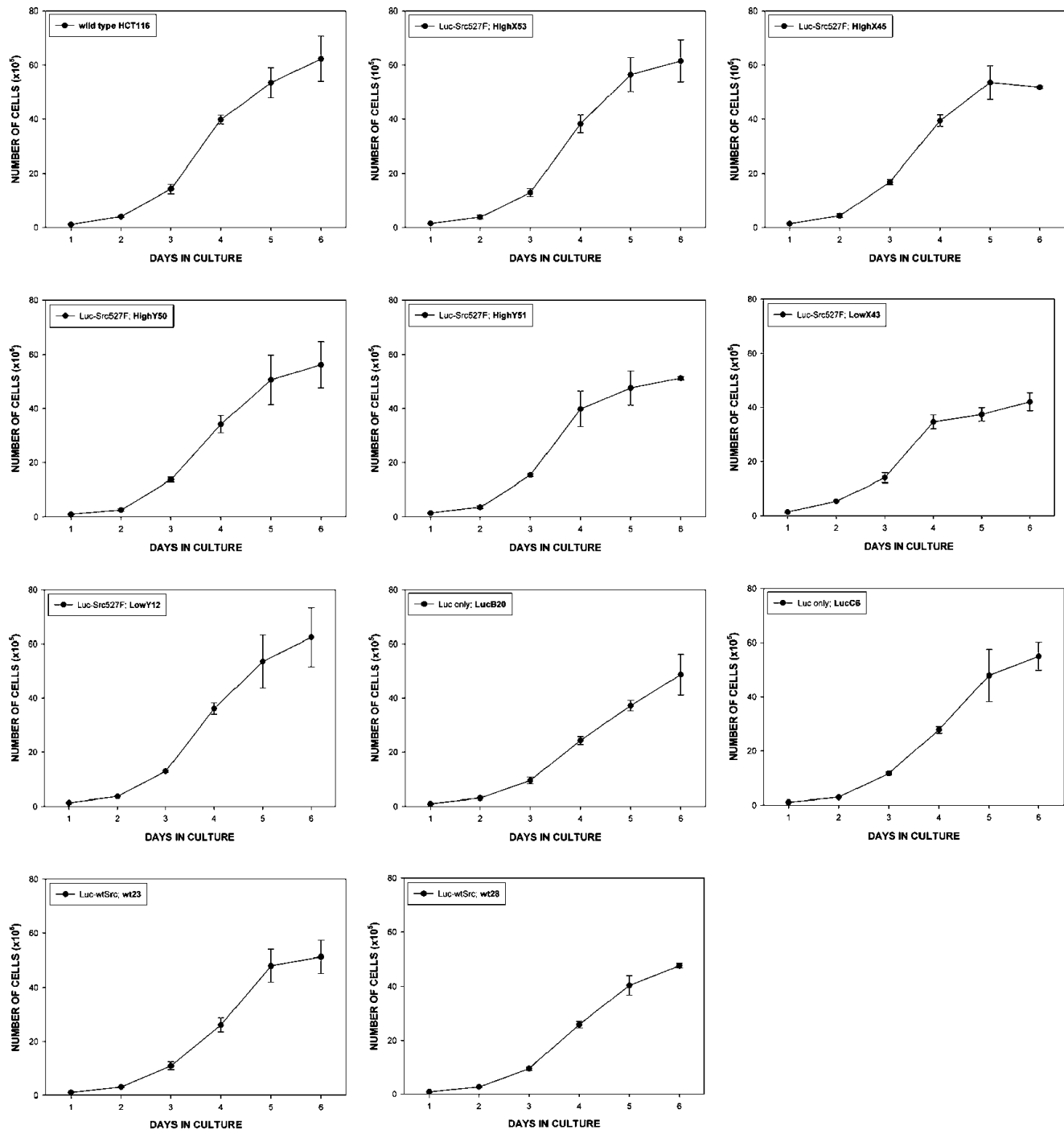


Figure W4. Growth curves from Figure 1D presented individually for each clone.