

## Health status measurement in chronic obstructive pulmonary disease

P W Jones

### Abstract

**Health status measurement is a common feature of studies in chronic obstructive pulmonary disease (COPD). This review assesses recent evidence for the validity of these measurements and their role as measures of the overall impact of the disease on the patient's daily life and wellbeing. It reviews the mostly widely used COPD specific questionnaires and examines the contribution that they make to an assessment of the overall effect of treatment. Finally, it addresses the question of how symptomatic benefit may be assessed in individual patients in routine practice.**

(*Thorax* 2001;56:880-887)

Keywords: chronic obstructive pulmonary disease; health status measurement; quality of life

Health status (or "health related quality of life measurement") has become a central feature of studies in chronic obstructive pulmonary disease (COPD). One driving force for this is the recognition that treatments for this condition, other than smoking cessation, are largely symptomatic. Another factor is the requirement in Europe that clinical trials of new drugs for COPD should incorporate a symptomatic measure, such as a health status questionnaire, as a co-primary end point along with a measure such as the forced expiratory volume in 1 second (FEV<sub>1</sub>). This review aims to assemble evidence for the validity of health status measurements, highlight new insights that they are providing about COPD and its treatment, and discuss implications for routine patient care. The review will concentrate solely on disease specific health status questionnaires. Generic questionnaires do have a place in COPD studies but are relatively insensitive to worthwhile treatment effects in this disease,<sup>1,2</sup> although the generic SF-36 has shown responsiveness in pulmonary rehabilitation.<sup>3</sup>

### Purpose of health status measurement in COPD

Health status measurement is a means of quantifying, in a standardised and objective manner, the impact of disease on patients' daily life, health, and wellbeing. It is a process that is essentially similar to a highly structured clinical

history, although the end product is not a clinical impression but an objective measurement that can be used for scientific purposes. It is no more "soft" or "touchy-feely" than any well taken clinical history. Health status questionnaires usually address emotional and psychological effects of the illness as well as the physical, but the bulk of their items usually concern practical aspects of disturbance to daily life. Some questionnaires are even called functional performance questionnaires.<sup>4</sup> Regardless of terminology and precise content, the purpose of these questionnaires is to address a wide range of effects of the disease and, if possible, to summarise these in one overall score.

### COPD: a multisystem disorder

What does health status measurement have to offer in COPD, when the FEV<sub>1</sub> has served well for four decades? In addressing this question it should be appreciated that, while COPD has its primary effect in the lungs, structural and functional changes also take place in other organs. Even in the lungs there are a number of different pathophysiological processes, each of which may be present to a varying degree. Furthermore, there are important effects of COPD such as fatigue that have no immediate relationship to expiratory airflow limitation. The following paragraphs illustrate the multi-causal nature of COPD symptoms, which justifies the development of health status scales that sum the effects of these multiple processes.

### BREATHLESSNESS

Breathlessness is the characteristic symptom of COPD. It has a complex aetiology that is linked to the process of breathing.<sup>5</sup> With increasing lung volume a greater respiratory effort is needed to maintain tidal breathing. There is a curvilinear relationship between the FEV<sub>1</sub> and residual volume, but the two correlate only moderately well.<sup>6</sup> Since breathlessness is largely associated with inspiration, interest is turning to measurements made during the inspiratory portion of the respiratory cycle. For example, bronchodilator induced reductions in breathlessness at rest have been shown to correlate better with changes in forced inspiratory flow than with changes in FEV<sub>1</sub>.<sup>7</sup> Static lung volumes are increased in COPD,<sup>6</sup> but there is also a further rise in functional residual capacity at exercise onset, otherwise known as

Department of  
Respiratory Medicine,  
Division of  
Physiological  
Medicine, St George's  
Hospital Medical  
School, London  
SW17 0RE, UK  
P W Jones

Correspondence to:  
Professor P W Jones  
pjones@sghms.ac.uk

Received 2 December 2000  
Returned to author  
7 March 2001  
Revised version received  
12 July 2001  
Accepted for publication  
12 July 2001

dynamic hyperinflation. The reduction in breathlessness during exercise that occurs with bronchodilators has been shown to correlate better with improvement in inspiratory capacity during exercise (due to a reduction in dynamic hyperinflation) than improvement in FEV<sub>1</sub>.<sup>8,9</sup> In addition to disturbances of lung mechanics, a further cause of dyspnoea in COPD is the increased respiratory drive that occurs in the presence of exercise induced arterial desaturation. Finally, it should be appreciated that, in addition to the multiplicity of causal mechanisms, there are also large interindividual differences in the perception of breathlessness for a given level of ventilation, even in healthy people with no lung disease.<sup>10</sup> As a result, for any given level of work, breathlessness will be the result of an interaction between a number of different mechanisms and patient specific characteristics that are unrelated to the underlying disease.

#### FATIGUE AND MUSCLE WASTING

Leg fatigue has been shown to be as important as breathlessness in limiting peak exercise performance.<sup>11</sup> In one study patients rated it to be a more important problem than breathlessness, although not unless asked directly about it.<sup>12</sup> Muscle weakness is a feature of COPD, particularly of the legs<sup>13</sup> but also of the arms.<sup>14</sup> This may not be due entirely to disuse atrophy since nutritional depletion occurs<sup>15</sup> and there is evidence of circulating inflammatory cytokines in COPD.<sup>16</sup>

#### SLEEP AND MOOD

COPD causes disturbances other than impaired exercise tolerance and decreased mobility. Disturbed sleep is a common feature. A recent survey of patients with COPD in the Breathe Easy Club, carried out by the British Lung Foundation, found that half of the respondents had regular sleep disturbance.<sup>17</sup> Disorders of mood state also occur.<sup>18</sup> This may be confined to subgroups within a COPD population<sup>19</sup> since depression scores are not uniformly increased, even in patients with moderate to severe COPD.<sup>20</sup> While mood state may be impaired in a minority of patients, a loss of sense of control or “mastery” over their condition is a common feature of patients with COPD—so much so that it forms an important part of one well established health status questionnaire, the Chronic Respiratory Questionnaire.<sup>12,21</sup>

#### EXACERBATIONS

The frequency of reported COPD exacerbations increases with disease severity.<sup>22</sup> In patients with moderate to severe COPD, prospective data collection using diary cards revealed that patients report only 50% of the exacerbations that they experience and have a median exacerbation rate of 3 per year with a range of 1–8.<sup>23</sup> Lung function can take several weeks to recover,<sup>24</sup> so exacerbation frequency is clearly an important factor.

#### Need for an overall summary of the effects of COPD

It is clear that there are multiple consequences of COPD. Even in the lungs there is no single or composite summary measure of impaired lung function. In many circumstances it would be valuable to have an estimate of the overall effect of the disease and the overall impact of treatment. There is a need for a measure that can aggregate into a single score the summed effect of the multiple pathophysiological processes that involve different organs and systems. This is the role of health status measurement—to provide a comprehensive estimate of the primary and secondary effects of the disease.

#### Health status questionnaires

There are a number of instruments that may be described as COPD specific health status questionnaires including the Chronic Respiratory Questionnaire (CRQ),<sup>21</sup> the St George's Hospital Questionnaire (SGRQ) which is for both asthma and COPD,<sup>25</sup> the Breathing Problems Questionnaire (BPQ),<sup>26,27</sup> and the QOL-RIQ.<sup>28</sup> These questionnaires tend to have a degree of complexity that makes them unsuitable for routine use, which led to the development of the AQ20—a 20-item instrument that takes 2–3 minutes to complete and score.<sup>29</sup> This questionnaire is suitable for both asthma<sup>29</sup> and COPD.<sup>30</sup> There are also two function limitation questionnaires that are similar in many respects to health status instruments: the modified Pulmonary Functional Status and Dyspnea Questionnaire (PFSDQ-M)<sup>4</sup> and the Pulmonary Functional Status Scale (PFSS).<sup>31</sup> These two questionnaires are in wide use in pulmonary rehabilitation programmes in the USA. Activity of daily living scales are similar to function limitation questionnaires but address more severe levels of disability. The Nottingham Extended Activity of Daily Living Scale has been shown to have some validity in COPD<sup>32</sup> but it was not developed for this disease. A COPD specific activity of daily living scale has recently been described and validated.<sup>33</sup>

Health status questionnaires are made up of items selected because they are relevant to patients with COPD in terms of frequency and importance. Their content is generally similar, but they differ in terms of their underlying structure. There are relatively few direct comparisons between them. A recent comparison of the CRQ and SGRQ did not favour clearly one over the other.<sup>34</sup> Another study reported unfavourable completion rates with the SGRQ compared with the CRQ,<sup>35</sup> but this was because the SGRQ was not administered according to the developer's guidelines (patients were often given it to take home). The CRQ, which must be interviewer administered, was completed rather better. Two rehabilitation studies have compared the responsiveness of the CRQ and SGRQ directly. One found that the changes in CRQ score were slightly higher in relative terms than those for the SGRQ,<sup>36</sup> whereas another larger study showed that the SGRQ was more responsive.<sup>3</sup> Cross

Table 1 Summary of published data concerning the cross sectional validity of SGRQ Total scores in patients with COPD

	Result	References
<i>Physiology</i>		
FEV <sub>1</sub>	$r = 0.14-0.41$	19, 25, 34, 55, 57
Bronchial hyperreactivity	$r = 0.20$ (independent of FEV <sub>1</sub> )	61
RV/TLC	$r = 0.24$	33
Pao <sub>2</sub>	$r = 0.41-0.48$	55, 57
P <sub>imax</sub>	$r = 0.23$	62
Exercise (6-minute walk)	$r = 0.28-0.61$	19, 25, 57
Exercise (Vo <sub>2max</sub> )	$r = 0.5$	37
<i>Symptoms</i>		
Frequency of wheeze (daily <i>v</i> not daily)	Difference = 20.0 units	25
Presence of chronic bronchitis	Difference = 13.9 units	25
Breathlessness (Borg at end exercise)	$r = 0.53$	25
Breathlessness (MRC dyspnoea scale)	$r = 0.46-0.7$	25, 30, 57, 63
Frequency of exacerbations (low <i>v</i> high)	Difference = 14.8 units	23
<i>Mood state</i>		
Depression	$r = 0.57-0.72$	25, 37, 57
Anxiety	$r = 0.40-0.57$	25, 37, 57
<i>Health resource use</i>		
Readmission to hospital (admitted <i>v</i> not readmitted over 1 year)	Difference = 4.8 units	64
Days in hospital over 1 year	$\rho = 0.5$	18

FEV<sub>1</sub> = forced expiratory volume in 1 second; RV = residual volume; TLC = total lung capacity; Pao<sub>2</sub> = arterial oxygen tension; P<sub>imax</sub> = maximum inspiratory pressure; Vo<sub>2max</sub> = maximum oxygen consumption.

The studies presented here are not exhaustive, but the results given are representative of those in the literature, particularly with respect to the maxima and minima.

Note: (1) The sign of the correlation has been ignored, but in each case the direction of difference in SGRQ score was appropriate to the disease marker against which it was tested. (2) All the results shown are significant at  $p < 0.01$  except for those obtained with the FEV<sub>1</sub> (see text). (3) A difference in score of 4 units is clinically significant.

sectional correlations between SGRQ and CRQ scores have been reported to be greater than  $r = 0.7$ .<sup>37</sup> However, a comparison between CRQ Dyspnea and SGRQ Activity scores obtained in a recent rehabilitation study<sup>36</sup> found no significant correlation between these related scales ( $r = 0.15$ ,  $n = 123$ ; Bestall and Jones, unpublished). This may reflect the fact that SGRQ items are entirely standardised, but in the CRQ Dyspnea scale the patients choose the activities that are important to them, so this scale may not be suitable for cross sectional comparisons.

Concerning the shorter questionnaires, a UK study concluded that the BPQ provided more valid assessments of health status than the CRQ,<sup>38</sup> although a Japanese group reached the opposite conclusion—namely, that the CRQ (and SGRQ) discriminated between patients with different degrees of severity better than the BPQ.<sup>37</sup> In terms of responsiveness, there is one report that the BPQ was not as sensitive as the CRQ in detecting change following a pulmonary rehabilitation programme.<sup>39</sup> The other short questionnaire (the AQ20) appeared to discriminate between patients as well as the CRQ and SGRQ and also to be responsive to changes following pulmonary rehabilitation.<sup>30</sup>

### Validation of health status questionnaires

This topic is complicated by the use of a number of terms to describe different aspects of the validation process. In essence, its purpose is to test whether a questionnaire measures what its authors claim. There is no single step or test that will validate a questionnaire; indeed, it is quite the reverse. Many different hypotheses have to be tested to build up a picture that will allow an overall judgement as to whether the questionnaire is behaving in the manner expected of an instrument designed to measure impaired health.

Questionnaires are often described as having two broad types of property: discriminative—that is, the ability to distinguish between different levels of impaired health between patients; and evaluative—that is, the ability to detect changes with disease progression or treatment. For a number of practical reasons there are more published data concerning discriminative properties than evaluative properties. Of the most widely documented questionnaires, the CRQ was designed specifically as an evaluative instrument whereas the SGRQ has both discriminative and evaluative properties. Tests of the cross sectional validity of the CRQ against exercise capacity (an important determinant of health status) have produced inconsistent results,<sup>37, 40</sup> so evidence for the validity of health status measurement using the SGRQ is summarised in table 1. Correlations between changes in health status score and changes in other measures of disease activity are weaker than the corresponding cross sectional comparisons because the range of scores is smaller, but the pattern of between-patient and within-patient correlations is still very similar.<sup>25</sup> There is also clear evidence for the validity of within-patient changes in health status measured using the CRQ.<sup>2</sup>

### DISEASE FACTORS ASSOCIATED WITH IMPAIRED HEALTH

The studies summarised in table 1 show that health status scores are significantly associated with abnormalities in a wide range of markers of impaired health. It would be inappropriate to expect high correlations with any specific aspect of COPD, since the questionnaires are designed to address a wide range of different effects of the disease. However, some patterns do emerge from the data. Impaired exercise performance and functional capacity (as measured by the MRC Dyspnoea Scale, for example) are quite strongly associated with

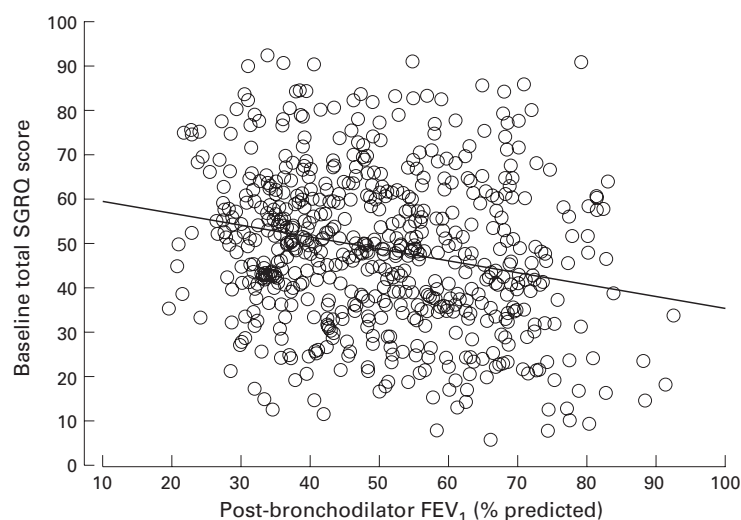


Figure 1 Correlation between SGRQ and post-bronchodilator FEV<sub>1</sub> measured to ATS criteria,  $r=0.23$ ,  $p<0.0001$ . SGRQ scores corresponding to the BTS criteria for COPD are: mild 43 (SD 18); moderate 48 (SD 17); severe 53 (SD 16),  $p<0.0001$  (ANOVA). Data are from the baseline of the ISOLDE study of fluticasone in COPD.<sup>22</sup>

poorer health status. The presence of daily symptoms and a high exacerbation frequency are other important factors. Emotional factors have been shown to be important and common in patients with COPD,<sup>12</sup> so it is not surprising that anxiety and depression are quite consistent correlates of impaired health. A number of factors may have interactive effects on health status. For example, COPD patients with a low mean body mass had much worse SGRQ scores than those in whom mean body mass was normal.<sup>41</sup> This association appeared to be attributable to an increase in breathlessness—that is, patients with a low mean body mass have worse health because of higher levels of dyspnoea. This conclusion has been challenged recently since, in another study, impaired health status in patients with low free fat mass could not be explained solely in terms of breathlessness.<sup>42</sup>

There is a degree of intercorrelation between factors that determine health status impairment. Within the limits of what is measurable in the same population of patients, multivariate analysis has shown that 50% of the variance in SGRQ Total score could be attributed to a combination of cough, wheeze, MRC dyspnoea grade, 6 minute walking distance, and anxiety score (each as statistically significant covariates).<sup>25</sup> Thus, it appears that health status questionnaires can bring together a range of effects of COPD into one summary measure of the overall impact of the disease, which is their primary purpose.

#### FEV<sub>1</sub> AND HEALTH STATUS

The reported correlations between FEV<sub>1</sub> and health status in COPD are never very high (table 1). Quite a wide range of  $r$  values is found in the literature, but this may just reflect sampling factors in data derived from relatively small study populations. Figure 1 contains what is perhaps the definitive description of this relationship, being obtained from nearly 800 patients measured at baseline in the ISOLDE study.<sup>22–43</sup> Lower FEV<sub>1</sub> is associated

with worse health, but the correlation is weak. At a population level, a clearer association between FEV<sub>1</sub> and health status may be seen when mean data from different patient populations are plotted against each other.<sup>44–45</sup> Returning to individual patients, the most important inference to be drawn from this weak relationship is that some patients may have very poor health despite mild spirometric impairment (although, on the other hand, there are also patients with severe airways obstruction who appear to have little disturbance to their daily lives, despite severe airflow limitation).

While the correlation between health status and FEV<sub>1</sub> is low, this is not entirely surprising in view of the effects of COPD on health that are not mediated through expiratory flow limitation. For example, health status tends to correlate better with exercise performance than with FEV<sub>1</sub> (table 1). It will be interesting to see whether peak inspiratory flow or inspiratory capacity provide better spirometric correlates of health impairment than the FEV<sub>1</sub>, as appears to be the case with dyspnoea during exercise.<sup>8–9</sup>

#### What can be learned from health status measurement?

Health status questionnaires have found their widest application in clinical trials where they are used to provide a measure of the overall symptomatic benefit from the treatment, together with an index of whether the effect was worthwhile. There is no universally agreed definition of worthwhile benefit in chronic disease, but a common view is that, if a patient can detect a definite reduction in symptoms or the impact of the disease on their daily life, that is clinically significant. The issue of clinically noticeable differences and thresholds for clinical significance is a complex topic that is discussed in depth elsewhere.<sup>46–49</sup> Sufficient to say here that the suggested thresholds of 0.5 per domain for the CRQ<sup>50</sup> and 4 units for the SGRQ<sup>51</sup> appear to be reliable.

A good example of the contribution that health status measurement can make to the evaluation of a treatment is contained in a meta-analysis of the effect of pulmonary rehabilitation.<sup>52</sup> Health status data from that review are shown in fig 2. Across 4–6 trials, all domains of the CRQ improved by a statistically significant amount. The mean improvements were greater than the minimum clinically important difference (MCID). Even more strikingly, for the Dyspnoea and Mastery components of the CRQ, the lower 95% confidence interval (CI) of the treatment effect did not cross the MCID—that is, pulmonary rehabilitation produced an effect that was significantly greater than that needed for a minimum worthwhile benefit. Few treatments can claim such a result in any disease. The same magnitude of effect from pulmonary rehabilitation—that is, one that was significantly greater than the minimum clinically significant change—has now been reported from a single large study in which such benefits were seen with both the CRQ and the SGRQ.<sup>3</sup>



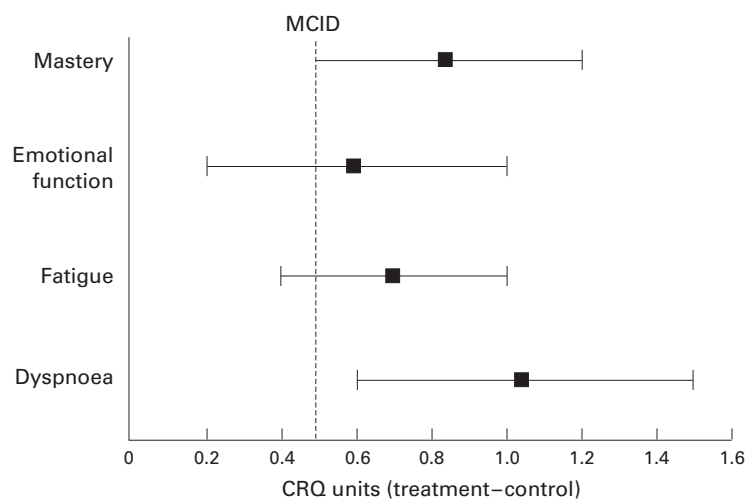


Figure 2 Meta-analysis plot comparing changes in CRQ scores between control and pulmonary rehabilitation. Six studies contributed scores for the Dyspnoea domain of the CRQ and four studies provided scores for the other three domains. The error bars are 95% confidence intervals. MCID = minimum clinically important difference between treatment groups. Drawn from data summarised by Lacasse et al.<sup>32</sup>

In the context of pharmacological studies, health status measurements may provide another particularly important contribution as illustrated by a 16 week study that compared two doses of salmeterol with placebo in COPD.<sup>1</sup> The improvement in FEV<sub>1</sub> was similar with both doses of the drug (110–120 ml). This magnitude of improvement is at the lower end of those typical of COPD bronchodilator studies. In patients given salmeterol 50 µg twice daily, the SGRQ score improved by over 5 units (a clinically and statistically significant amount) compared with the changes seen with placebo. In contrast, patients given salmeterol 100 µg twice daily experienced neither a clinically nor a statistically significant improvement in SGRQ, despite having an improvement in FEV<sub>1</sub> of the same magnitude as that obtained with the lower dose. This lack of symptomatic benefit appears to have been due to side effects.<sup>1</sup> Use of health status measurement in this study has shown that salmeterol can, in the right dose, produce worthwhile benefits that patients do notice. Physicians are often tempted to increase drug doses in the face of a poor response or to get an even better effect. Use of direct measurements of health status has shown that this may lead to a loss of any benefit, rather than additional gain.

#### Longitudinal trends in health status

The accelerated decline in FEV<sub>1</sub> that occurs in smokers with COPD is familiar to all chest physicians since the work of Fletcher and Peto. Only recently, following the ISOLDE study, has the accompanying decline in health status been documented.<sup>22–43</sup> The existence of this decline was predictable from clinical experience and cross sectional data such as those in fig 1 in which lower FEV<sub>1</sub> was associated with worse health. However, the rate of decline was not predicted. In patients with a mean post-bronchodilator FEV<sub>1</sub> of 50% predicted and treated with bronchodilators alone, the SGRQ score declines approximately 3 units per year. Thus, on average, patients reach a

clinically significant level of deterioration of 4 units every 15 months. This is much faster than the age related worsening in the SGRQ score of 0.12 units per year observed in healthy subjects without COPD.<sup>53</sup> The mechanisms underlying this decline have yet to be fully established, although the rate of decline in FEV<sub>1</sub> is a factor,<sup>45</sup> as is the rate of exacerbation.<sup>54</sup> Clearly there will be “fast” and “slow” decliners in health status, and the challenge will be to identify “fast” decliners early on in their disease and develop appropriate interventions.

Demonstration of a measurable decline in health status has important implications for the design and interpretation of long term clinical trials in COPD, and for the management of patients in routine practice. Progressive worsening of patients’ health over time will appear to erode earlier therapeutic gains. This may not mean that the treatment effect has worn off—it is just a reflection of the fact that COPD is a relentlessly progressive disease. In this respect, the most encouraging finding from the ISOLDE study was that fluticasone reduced the rate of decline in SGRQ score by nearly 40% and that the difference between steroid and placebo treated groups widened progressively with time.<sup>22–43</sup>

#### Limitations of health status measurement

Health status instruments are not perfect. Their developers attempt to make the best instrument that they can, but limitations emerge with use. These may be related to the administration or scoring of the questionnaire, but it should be appreciated that comprehensive measurements require sophisticated instruments. Improvement in signal/noise ratio of the scores is possible by elimination of less reliable and less discriminatory items, but consistency between studies requires that scores from any “improved” version should be directly compatible with those obtained with the earlier version. Nevertheless, these objectives may be achievable, although radical reductions in item numbers would not occur.

Scores for the existing COPD questionnaires are usually normally distributed with little evidence of so-called “floor” and “ceiling” effects, although one comparison of the BPQ, CRQ, and SGRQ reported BPQ scores to be distributed towards the low end.<sup>37</sup> One unresolved issue concerns the application of these instruments to the most severe patients. These questionnaires were developed in patients who were largely not housebound, so they may not be appropriate for patients with end stage disease, although in COPD patients with hypoxia<sup>55</sup> and hypoxia plus hypercapnoea<sup>56</sup> SGRQ scores were high but still normally distributed. Questionnaires designed for the most severe patients have been developed, including the London Chest Activity of Daily Living scale (LCADL)<sup>33</sup> and a respiratory failure specific instrument, the MRF-28.<sup>37</sup> Studies that compare these new instruments with existing questionnaires will serve as a test of the adequacy of the latter in the most severe subgroup.

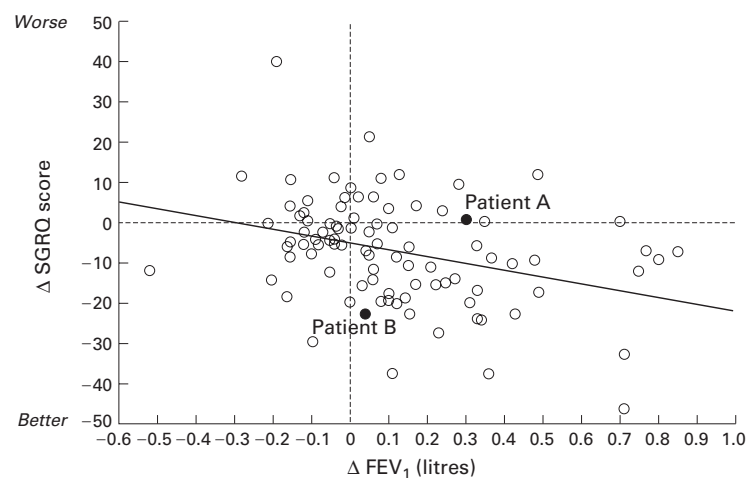


Figure 3 Correlation between change in FEV<sub>1</sub> and change in SGRQ score over 16 weeks in patients given salmeterol 50 µg twice daily ( $r=0.33$ ,  $p=0.001$ ).<sup>1</sup> While there is a significant association between change in spirometric parameters and change in health status, the strength of that relationship is too weak to allow the health status gains to be inferred from spirometric changes. This is illustrated by patients such as patient B who had an undetectable increase in FEV<sub>1</sub> but a very large change in health status (five times the threshold for a clinically significant change).

### Health status measurement in routine practice

Health status questionnaires were developed and validated in populations of patients as research tools that would allow standardised assessments. Disease specific questionnaires such as the CRQ and SGRQ are composed of “lowest common denominator” items that are applicable to most patients with COPD. When used in clinical trials, they indicate the average response to treatment. In routine practice, however, clinicians treat individuals, not the average. This presents the challenge of assessing whether an individual patient has had a worthwhile improvement. Physiological improvement does not appear to be an adequate surrogate for symptomatic or health status improvement. In pulmonary rehabilitation the correlation between improvement in health status and improvement in exercise performance is generally weak.<sup>2 58–60</sup> Similarly, with long acting bronchodilators the correlation between changes in FEV<sub>1</sub> and health status is weak (fig 3).<sup>1</sup> There is a significant correlation between FEV<sub>1</sub> and SGRQ score, but also much scatter around the regression line. Some patients, as exemplified by patient A, had a measurable improvement in FEV<sub>1</sub> but no improvement in SGRQ. Others such as patient B showed very large improvements in health status but no detectable change in FEV<sub>1</sub>. Use of spirometric testing as the sole method of assessing benefit would deny such patients a worthwhile treatment. Bronchodilators may produce symptomatic benefit, not only by reducing expired air-flow limitation but also by improving inspiratory flow rates,<sup>7</sup> minimising the effects of dynamic hyperinflation,<sup>8 9</sup> and by improving sleep.

The absence of a strong correlation between symptomatic and spirometric gain is not surprising, given the many factors that influence the development and perception of respiratory symptoms and the ensuing disability, but

it does show that symptomatic gain in individual patients in routine practice cannot be inferred reliably from spirometric changes. This poses the question as to how symptomatic and health status gain should be assessed in routine practice. Unfortunately, use of standardised questionnaires such as the CRQ, SGRQ, and even the short and simple AQ20 may not be the answer. These questionnaires complement baseline spirometry to provide a more complete picture of the patient's disease severity, but they have limitations which restrict their usefulness when assessing an individual patient's response to a specific treatment. Any questionnaire short enough for routine use will contain only a small number of items that have been carefully selected to be relevant to all patients with COPD. These items give very little opportunity for an individual patient to indicate how they experience personal benefit from treatment. There are also statistical issues. In a population of patients with stable COPD the short term repeatability of these questionnaires is good. For example, the correlation between SGRQ measurements made 2 weeks apart is 0.92,<sup>25</sup> but the correlation coefficient does not give the full picture since the standard deviation for the difference between the two measurements is  $\pm 9$  units. Approximately half of the patients will show a change in SGRQ score that is greater or less than the 4 unit threshold for a clinically significant change, whether or not there has been a real change in their state. Equally, in other patients who have a “true” worthwhile benefit, the health status score may change by less than the clinically significant threshold. This problem applies also to the CRQ and, indeed, is not unique to health status measurement. It also arises when assessing an individual patient's spirometric response to long acting bronchodilator. The mean change in FEV<sub>1</sub> (typically 100–200 ml) lies within the limits of reproducibility of the measurement.

### Measurement of individual patient benefit

It is only worth continuing to prescribe symptomatic treatments if the patient can report benefit, but how can that benefit be assessed if health status questionnaires have insufficient reliability within an individual patient? The answer is to draw upon data from health status research to inform clinical history taking. It has been shown that patients' global retrospective assessment of the effect of a treatment, reported using a 4 point scale (ineffective, satisfactory, effective, very effective) correlated well with the improvement in SGRQ score.<sup>1</sup> A 4 point change in SGRQ score was associated with the patients' overall assessment that the treatment was “effective”. Physicians can also identify, with some confidence, patients who have had a worthwhile response to treatment (fig 4). However, many clinicians may be concerned about the simple acceptance of the patient's self-report that the treatment was effective and look for more confirmation that a significant change had occurred. Further analysis of health status data through “back

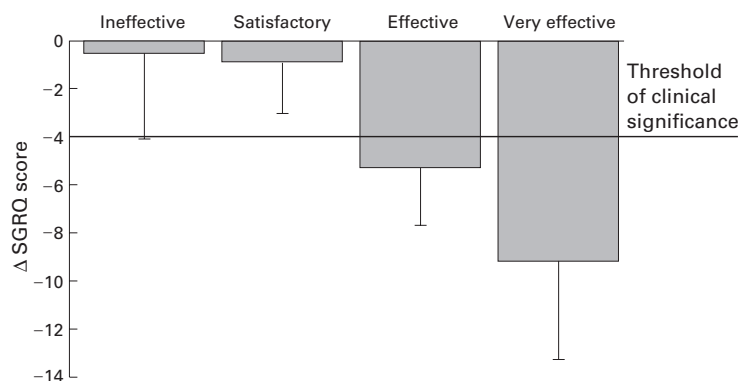


Figure 4 Comparison of physician judgements of overall treatment efficacy and change in SGRQ Total score over 16 weeks. Error bars are 95% confidence intervals. Data from Jones and Bosh.

#### Assessment of individual patient benefit from symptomatic treatment

- Has your treatment made a difference to you?
- Is your breathing easier in any way?
- Can you do some things now that you couldn't do at all before, or do the same things but faster?
- Can you do the same things as before but are now less breathless when you do them?
- Has your sleep improved?

Please give me an example.

*Box 1 Components of a clinical assessment of the response to symptomatic treatment for COPD. Patients should be able to provide examples of improvements that they have noticed and think are worthwhile.*

calculating" changes in the health status score has enabled clinical scenarios to be developed that illustrate the type of changes that may occur following effective treatment. For example, a 4 point change in SGRQ score (the threshold for a clinically significant change) corresponds to a patient who returns a few weeks after the prescription of a new treatment to report that he or she no longer takes so long to wash or dress, can now walk up stairs without stopping, and is now able to leave the house for shopping or entertainment. (Note: a 4 unit improvement in the SGRQ score would only occur if the patient reported all three improvements). Examples of similar scenarios may be found elsewhere.<sup>49</sup> These benefits are not marginal and can be readily identified by patients and reported to their clinician. A simple scheme of clinical assessment, based on results from health status and quality of life research, is illustrated in box 1. If the clinician is convinced by the patient's responses that a beneficial change has taken place, and the patient considers the change to be worthwhile, the treatment should be judged clinically effective.

#### Conclusions

Health status questionnaires provide a valid and standardised estimate of the overall impact of COPD and can complement spirometric measurements in the baseline assessment of

patients in routine practice. Simple questionnaires are now available for this purpose. In a clinical trial health status scores provide a measure of the overall level of symptomatic benefit to be obtained with that treatment. In the individual patient assessment of symptomatic benefit and quality of life improvement requires that a careful clinical history be taken.

- 1 Jones PW, Bosh TK. Quality of life changes in COPD patients treated with salmeterol. *Am J Respir Crit Care Med* 1997;155:1283-9.
- 2 Guyatt GH, King DR, Feeny DH, et al. Generic and specific measurement of health-related quality of life in a clinical trial of respiratory rehabilitation. *J Clin Epidemiol* 1999;52:187-92.
- 3 Griffiths TL, Burr ML, Campbell IA, et al. Results at 1 year of outpatient multidisciplinary pulmonary rehabilitation: a randomised controlled trial. *Lancet* 2000;355:362-8.
- 4 Lareau SC, Breslin EH, Meek PM. Functional status instruments: outcome measure in the evaluation of patients with chronic obstructive pulmonary disease. *Heart & Lung* 1996;25:212-24.
- 5 Killian KJ, Jones NL. Respiratory muscles and dyspnea. *Clin Chest Med* 1988;9:237-48.
- 6 Begin A, Grassino A. Role of inspiratory muscle function in chronic hypercapnia. *Am Rev Respir Dis* 1991;143:905-12.
- 7 Taube C, Burghart L, Paasch K, et al. Factor analysis of changes in dyspnea and lung function parameters after bronchodilation in chronic obstructive pulmonary disease. *Am J Respir Crit Care Med* 2000;162:216-20.
- 8 Belman MJ, Botnick WC, Shin JW. Inhaled bronchodilators reduce dynamic hyperinflation during exercise in patients with chronic obstructive pulmonary disease. *Am J Respir Crit Care Med* 1996;153:967-75.
- 9 O'Donnell DE, Lam M, Webb KA. Spirometric correlates of improvement in exercise performance after anticholinergic therapy in chronic obstructive pulmonary disease. *Am J Respir Crit Care Med* 1999;160:542-9.
- 10 Wilson RC, Jones PW. Differentiation between the intensity of breathlessness and the distress it evokes in normal subjects during exercise. *Clin Sci* 1991;80:65-70.
- 11 Killian KJ, Summers E, Jones NL, et al. Dyspnea and leg effort during incremental cycle ergometry. *Am Rev Respir Dis* 1992;145:1339-45.
- 12 Guyatt GH, Townsend M, Berman LB, et al. Quality of life in patients with chronic airflow limitation. *Br J Dis Chest* 1987;81:45-54.
- 13 Gosselink R, Troosters T, DeCramer M. Peripheral muscle weakness contributes to exercise limitation in COPD. *Am J Respir Crit Care Med* 1996;153:976-80.
- 14 Bernard S, Whittom F, Leblanc P, et al. Aerobic and strength training in patients with chronic obstructive pulmonary disease. *Am J Respir Crit Care Med* 1999;159:896-901.
- 15 Engelen MPKJ, Schols AMWJ, Baken WC, et al. Nutritional depletion in relation to respiratory and peripheral skeletal muscle function in outpatients with COPD. *Eur Respir J* 1994;7:1793-7.
- 16 Schols AMWJ, Buurman WA, Staal-van den Brekel AJ, et al. Evidence for a relation between metabolic derangements and increased levels of inflammatory mediators in a subgroup of patients with chronic obstructive pulmonary disease. *Thorax* 1996;51:819-24.
- 17 Anon. *Living with chronic obstructive pulmonary disease*. London: British Lung Foundation, 2000.
- 18 Janssens JP, Rochat T, Frey JG, et al. Health-related quality of life in patients under long-term oxygen therapy: a home-based descriptive study. *Respir Med* 1997;91:592-602.
- 19 Engstrom CP, Persson LO, Larsson S, et al. Functional status and well being in chronic obstructive pulmonary disease with regard to clinical parameters and smoking: a descriptive and comparative study. *Thorax* 1996;51:825-30.
- 20 Breslin E, van der Schans C, Breukink S, et al. Perception of fatigue and quality of life in patients with COPD. *Chest* 1998;114:958-64.
- 21 Guyatt GH, Berman LB, Townsend M, et al. A measure of quality of life for clinical trials in chronic lung disease. *Thorax* 1987;42:773-8.
- 22 Burge PS, Calverley PM, Jones PW, et al. Randomised, double blind, placebo controlled study of fluticasone propionate in patients with moderate to severe chronic obstructive pulmonary disease: the ISOLDE trial. *BMJ* 2000;320:1297-303.
- 23 Seemungal TAR, Donaldson GC, Paul EA, et al. Effect of exacerbation on quality of life in patients with chronic obstructive pulmonary disease. *Am J Respir Crit Care Med* 1998;157:1418-22.
- 24 Seemungal TAR, Donaldson GC, Bhowmik A, et al. Time course and recovery of exacerbations in patients with chronic obstructive pulmonary disease. *Am J Respir Crit Care Med* 2000;161:1608-13.
- 25 Jones PW, Quirk FH, Baveystock CM, Littlejohns P. A self-complete measure for chronic airflow limitation: the St George's Respiratory Questionnaire. *Am Rev Respir Dis* 1992;145:1321-7.
- 26 Hyland ME, Bott J, Singh S, Kenyon CA. Domains, constructs and the development of the breathing problems questionnaire. *Quality of Life Res* 1994;3:245-56.

- 27 Hyland ME, Singh SJ, Sodergren SC, *et al.* Development of a shortened version of the Breathing Problems Questionnaire suitable for use in a pulmonary rehabilitation clinic: a purpose-specific, disease-specific questionnaire. *Quality of Life Res* 1998;7:227-33.
- 28 Maille AR, Koning CJ, Zwinderman AH, *et al.* The development of the 'Quality-of-life for Respiratory Illness Questionnaire (QOL-RIQ)': a disease-specific quality-of-life questionnaire for patients with mild to moderate chronic non-specific lung disease. *Respir Med* 1997;91:297-309.
- 29 Barley EA, Quirk FH, Jones PW. Asthma health status in clinical practice: validity of a new short and simple instrument. *Respir Med* 1998;92:1207-14.
- 30 Hajiro T, Nishimura K, Jones PW, *et al.* A novel, short and simple questionnaire to measure health-related quality of life in patients with chronic obstructive pulmonary disease. *Am J Respir Crit Care Med* 1999;159:1874-8.
- 31 Weaver TE, Narsavage GL, Guilfoyle MJ. The development and psychometric evaluation of the Pulmonary Functional Status Scale: an instrument to assess functional status in pulmonary disease. *J Cardiopulm Rehabil* 1998;18:105-11.
- 32 Okubadejo AA, O'Shea L, Jones PW, *et al.* Home assessment of activities of daily living in patients with severe chronic obstructive pulmonary disease on long-term oxygen therapy. *Eur Respir J* 1997;10:1572-5.
- 33 Garrod R, Bestall JC, Paul EA, *et al.* Development and validation of a standardized measure of activity of daily living in patients with severe COPD: the London Chest Activity of Daily Living scale (LCADL). *Respir Med* 2000;94:589-96.
- 34 Rutten-van Molken M, Roos B, Van Noord JA. An empirical comparison of the St George's Respiratory Questionnaire (SGRQ) and the Chronic Respiratory Disease Questionnaire (CRQ) in a clinical trial setting. *Thorax* 1999;54:995-1003.
- 35 Harper R, Brazier JE, Waterhouse JC, *et al.* Comparison of outcome measures for patients with chronic obstructive pulmonary disease (COPD) in an outpatient setting. *Thorax* 1997;52:879-87.
- 36 Wedzicha JA, Bestall JC, Garrod R, *et al.* Randomized controlled trial of pulmonary rehabilitation in severe chronic obstructive pulmonary disease patients, stratified with the MRC dyspnoea scale. *Eur Respir J* 1998;12:363-9.
- 37 Hajiro T, Nishimura K, Tsukino M, *et al.* Comparison of discriminative properties among disease-specific questionnaires for measuring health-related quality of life in patients with chronic obstructive pulmonary disease. *Am J Respir Crit Care Med* 1998;157:785-90.
- 38 Yohannes AM, Roomi J, Waters K, *et al.* Quality of life in elderly patients with COPD: measurement and predictive factors. *Respir Med* 1998;92:1231-6.
- 39 Singh SJ, Smith DL, Hyland ME, *et al.* A short outpatient pulmonary rehabilitation programme: immediate and longer-term effects on exercise performance and quality of life. *Respir Med* 1998;92:1146-54.
- 40 Wijkstra PJ, TenVergert EM, van der Mark TW, *et al.* Relation of lung function, maximal inspiratory pressure, dyspnoea, and quality of life with exercise capacity in patients with chronic obstructive pulmonary disease. *Thorax* 1994;49:468-72.
- 41 Shoup R, Dalsky G, Warner S, *et al.* Body composition and health-related quality of life in patients with obstructive airways disease. *Eur Respir J* 1997;10:1576-80.
- 42 Mostert R, Goris A, Weling-Scheepers C, *et al.* Tissue depletion and health related quality of life in patients with chronic obstructive pulmonary disease. *Respir Med* 2000;94:859-67.
- 43 Spencer S, Calverley PMA, Burge PS, *et al.* Health status deterioration in patients with chronic obstructive pulmonary disease. *Am J Respir Crit Care Med* 2001;163:122-8.
- 44 Jones PW. Quality of life measurement for patients with diseases of the airways. *Thorax* 1991;46:676-82.
- 45 Jones PW. Assessment of the impact of mild asthma in adults. *Eur Respir J* 1996;6:57-60.
- 46 Redelmeier DA, Guyatt GH, Goldstein RS. Assessing the minimal important difference: a comparison of two techniques. *J Clin Epidemiol* 1996;49:1215-9.
- 47 Redelmeier DA, Guyatt GH, Goldstein RS. On the debate over methods for estimating the clinically important difference. *J Clin Epidemiol* 1996;49:1223-4.
- 48 Wright JG. The minimal important difference: who's to say what is important? *J Clin Epidemiol* 1996;49:1221-2.
- 49 Jones PW. Interpreting thresholds for a clinically significant change in health status ('quality of life') with treatment for asthma and COPD. *Eur Respir J* 2001 (in press).
- 50 Jaeschke R, Singer J, Guyatt GH. Measurement of health status. Ascertain the minimal clinically important difference. *Controlled Clin Trials* 1989;10:407-15.
- 51 Jones PW, Quirk FH, Baveystock CM. The St George's Respiratory Questionnaire. *Respir Med* 1991;85:25-31.
- 52 Lacasse Y, Wong E, Guyatt GH, *et al.* Meta-analysis of respiratory rehabilitation in chronic obstructive pulmonary disease. *Lancet* 1996;348:1115-9.
- 53 Barley EA, Jones PW. A comparison of global questions versus health status questionnaires as measures of the severity and impact of asthma. *Eur Respir J* 1999;14:591-6.
- 54 Spencer S, Anie K, Jones PW. Annual rate of health status decline in COPD patients is significantly related to frequency of exacerbation. *Eur Respir J* 1999;14:19s.
- 55 Okubadejo AA, Jones PW, Wedzicha JA. Quality of life in patients with chronic obstructive pulmonary disease and severe hypoxaemia. *Thorax* 1996;51:44-7.
- 56 Meecham Jones DJ, Paul EA, Jones PW, *et al.* Nasal pressure support ventilation plus oxygen compared with oxygen therapy alone in hypercapnic COPD. *Am J Respir Crit Care Med* 1995;152:538-44.
- 57 Carone M, Bertolotti G, Anchisi F, *et al.* Analysis of factors that characterize health impairment in patients with chronic respiratory failure. *Eur Respir J* 1999;13:1293-300.
- 58 Reardon J, Patel K, ZuWallack RL. Improvement in quality of life is unrelated to improvement in exercise endurance after outpatient pulmonary rehabilitation. *J Cardiopulm Rehabil* 1993;13:51-4.
- 59 Bendstrup KE, Ingemann Jensen J, Holm S, *et al.* Outpatient rehabilitation improves activities of daily living, quality of life and exercise tolerance in chronic obstructive pulmonary disease. *Eur Respir J* 1997;10:2801-6.
- 60 Guell R, Casan P, Sengenis M, *et al.* Quality of life in patients with chronic respiratory disease: the Spanish version of the Chronic Respiratory Questionnaire (CRQ). *Eur Respir J* 1998;11:55-60.
- 61 Renwick DS, Connolly MJ. Impact of obstructive airways disease on quality of life in older adults. *Thorax* 1996;51:520-5.
- 62 Ketelaars CA, Schlosser MA, Mostert R, *et al.* Determinants of health related quality of life in patients with chronic obstructive pulmonary disease. *Thorax* 1996;51:39-43.
- 63 Bestall JC, Paul EA, Garrod R, *et al.* Usefulness of the Medical Research Council (MRC) dyspnoea scale as a measure of disability in patients with chronic obstructive pulmonary disease. *Thorax* 1999;54:581-6.
- 64 Osman IM, Godden DJ, Friend JA, *et al.* Quality of life and hospital re-admission in patients with chronic obstructive pulmonary disease. *Thorax* 1997;52:67-71.