

Mutations of the *UMOD* gene are responsible for medullary cystic kidney disease 2 and familial juvenile hyperuricaemic nephropathy

T C Hart, M C Gorry, P S Hart, A S Woodard, Z Shihabi, J Sandhu, B Shirts, L Xu, H Zhu, M M Barmada, A J Bleyer

J Med Genet 2002;**39**:882–892

See end of article for authors' affiliations

Correspondence to:
Dr T C Hart, Center for Craniofacial and Dental Genetics, University of Pittsburgh, School of Dental Medicine, 614 Salk Hall, Terrace Street, Pittsburgh, PA 15261, USA;
hart@sdmgenetics.pitt.edu

Revised version received
14 October 2002
Accepted for publication
15 October 2002

Introduction: Medullary cystic kidney disease 2 (MCKD2) and familial juvenile hyperuricaemic nephropathy (FJHN) are both autosomal dominant renal diseases characterised by juvenile onset of hyperuricaemia, gout, and progressive renal failure. Clinical features of both conditions vary in presence and severity. Often definitive diagnosis is possible only after significant pathology has occurred. Genetic linkage studies have localised genes for both conditions to overlapping regions of chromosome 16p11-p13. These clinical and genetic findings suggest that these conditions may be allelic.

Aim: To identify the gene and associated mutation(s) responsible for FJHN and MCKD2.

Methods: Two large, multigenerational families segregating FJHN were studied by genetic linkage and haplotype analyses to sublocalise the chromosome 16p FJHN gene locus. To permit refinement of the candidate interval and localisation of candidate genes, an integrated physical and genetic map of the candidate region was developed. DNA sequencing of candidate genes was performed to detect mutations in subjects affected with FJHN (three unrelated families) and MCKD2 (one family).

Results: We identified four novel uromodulin (*UMOD*) gene mutations that segregate with the disease phenotype in three families with FJHN and in one family with MCKD2.

Conclusion: These data provide the first direct evidence that MCKD2 and FJHN arise from mutation of the *UMOD* gene and are allelic disorders. *UMOD* is a GPI anchored glycoprotein and the most abundant protein in normal urine. We postulate that mutation of *UMOD* disrupts the tertiary structure of *UMOD* and is responsible for the clinical changes of interstitial renal disease, polyuria, and hyperuricaemia found in MCKD2 and FJHN.

Medullary cystic kidney disease 2 (MCKD2)¹ and familial juvenile hyperuricaemic nephropathy (FJHN)² constitute a group of heritable renal diseases with a common mode of transmission (autosomal dominant) and shared features including polyuria, progressive renal failure, hyperuricaemia, and gout. Both diseases are associated with interstitial pathological changes resulting in fibrosis.^{3,4} While corticomedullary cysts are well documented in MCKD2, their presence in FJHN is not well documented.⁵ The primary clinical features of MCKD2 and FJHN vary in presence and severity, complicating the diagnosis of these conditions, particularly in milder cases.^{5,6}

Genetic linkage studies have localised genes for both MCKD2 and FJHN to overlapping regions of chromosome 16p11-13.⁵⁻⁹ Because of the similarities in clinical findings and localisation of a major disease gene for both conditions to an overlapping region of chromosome 16p, it has been proposed that both diseases may arise from alteration of a common gene.⁵ Identification of the genetic basis of MCKD2 and FJHN will resolve the question of whether these are allelic disorders and, more importantly, permit definitive diagnostic testing. Presymptomatic diagnosis will allow early detection and treatment of the disease, which will be helpful in avoiding long term complications such as gout and hypertension. It will be of especial importance when clinically unaffected subjects are considering kidney donation to affected sibs.

MCKD2 is associated with defects in urinary concentration,⁵ interstitial renal damage,³ and amorphous interstitial renal deposits,¹⁰ findings that could all be related to functional defects in a protein synthesised and secreted by the renal tubules. Similarly, FJHN is associated with increased

tubular uric acid reabsorption¹¹ and tubulointerstitial damage⁴ that could also be caused by an abnormal protein synthesised and secreted by the renal tubules. The Tamm-Horsfall glycoprotein,¹² also referred to as uromodulin,¹³ is a glycosylphosphatidylinositol (GPI) anchored glycoprotein and the most abundant protein in normal urine. Hoyer *et al*¹⁴ localised expression of uromodulin to the thick ascending limb of the loop of Henle. In addition, these authors identified amorphous deposits of uromodulin in the renal interstitium of patients with medullary cystic kidney disease.^{10,15}

Despite significant speculation, the function of uromodulin remains unclear. It has been hypothesised to form a gel which helps maintain the integrity of the loop of Henle and the counter-current mechanism,¹⁴ to perform immunological functions related to its ability to bind to tumour necrosis factor,¹⁶ interleukin 1 α , and other cytokines,¹⁷ and to prevent urinary tract infections owing to its ability to prevent *Escherichia coli* from binding to human kidney cells.¹⁸ Uromodulin is also reported to have an antioxidant effect¹⁹ and to inhibit calcium oxalate crystallisation.²⁰ In canines, uromodulin is reported to function as a novel carrier for vitamin A in the urine.²¹ Since it was first isolated from the urine via a salt precipitation technique by Tamm and Horsfall in 1950,¹² there has been abundant speculation regarding the physiological function of this protein, and its role in renal disease has remained undetermined.

Here we report genetic linkage and mutational analyses of members of three families segregating FJHN and one family segregating MCKD2. As a result of linkage studies of two of these families, we were able to refine the candidate region for the FJHN gene locus to a region of ~1.7-Mb. Using bioinformatic methods, we developed a physical map of the

Family 1

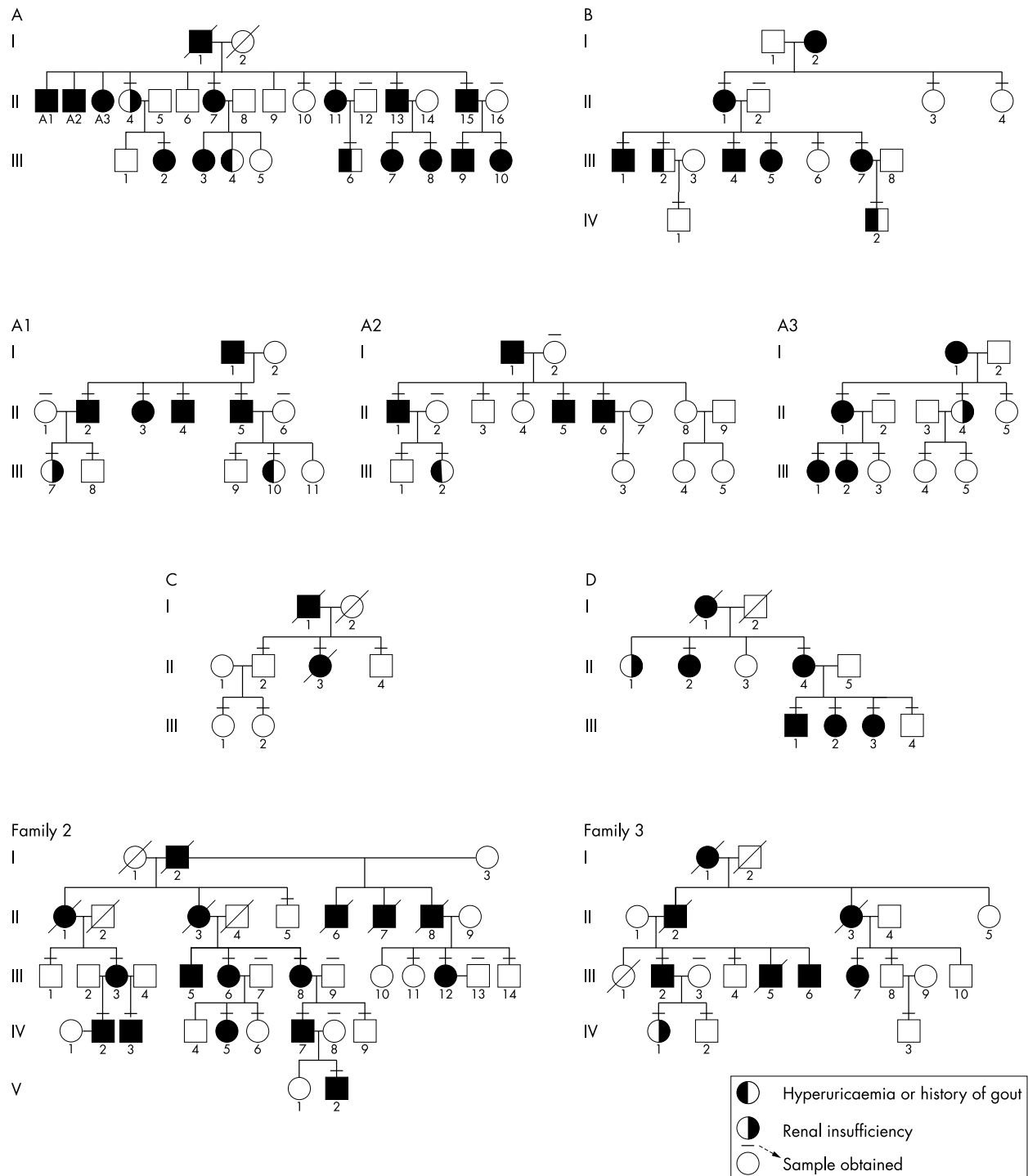


Figure 1 Pedigrees of families studied. Family 1: more than 300 subjects have been genealogically identified over seven generations. The kindred is too large to include in total; we have indicated the nuclear families studied for this report. These families are from different parts of this extended kindred, and are indicated as subfamilies A, B, C, and D. In addition eight singletons were studied. Clinical findings in affected family members are consistent with a clinical diagnosis of FJHN in family 1. Family 2: clinical findings in this family are consistent with a clinical diagnosis of FJHN. Family 3: clinical findings and renal biopsy/necropsy reports are consistent with a clinical diagnosis of MCKD2.³

candidate region, permitting identification and localisation of six genes. Direct sequence analysis of candidate genes within this interval resulted in identification of four different mutations in exon 4 of the uromodulin (*UMOD*) gene in affected members in three families with FJHN and one family with MCKD2. Family members carrying the mutation suffered from hyperuricaemia, decreased fractional excretion of uric

acid, enuresis, and chronic renal failure. These findings confirm that FJHN and MCKD2 result from allelic mutations of a common gene. Additionally, these results confirm speculation that aberration of uromodulin, the most common protein in urine, results in decreased ability to concentrate the urine with resulting hyperuricaemia, and chronic progressive interstitial renal disease.

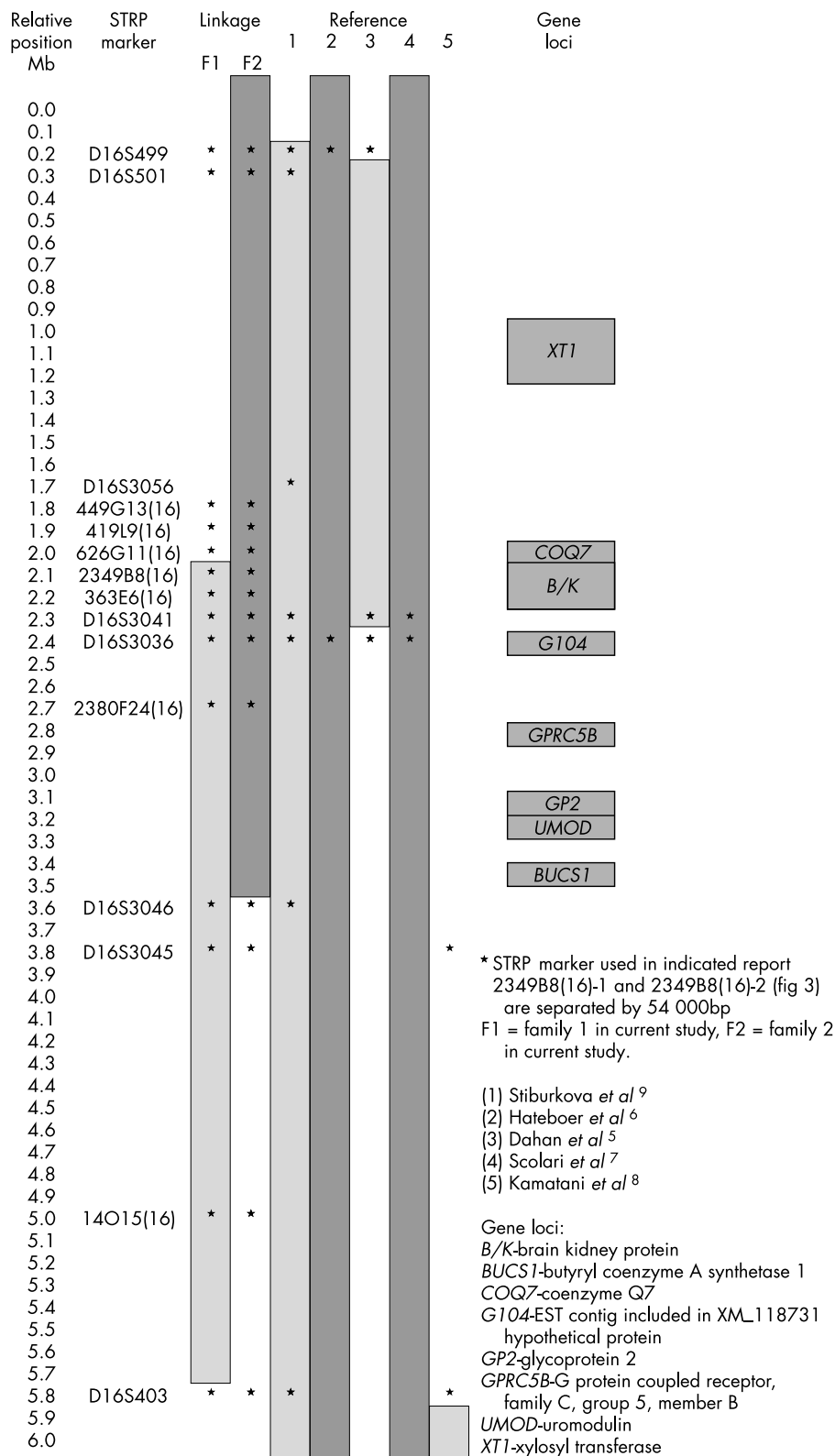


Figure 2 Integrated physical and genetic map of the FJHN/MCKD2 candidate region on chromosome 16p. Genetic STRP markers and their relative locations are indicated on the left. Locations of significant linkage results (lod scores >3.0) are indicated for two families in the current report (families 1 and 2) and for five other studies.¹⁻⁵ Nine known STRPs and nine novel STRPs were identified, localised, and genotyped. Two novel STRP loci were identified in BAC2349B8; the position of these loci (2349B8(16)-2 and 2349B8(16)-1) are separated by 54 000 bp and their order is given in fig 3. Genetic loci identified in the region are indicated to the right of the figure.

PATIENTS AND METHODS

Pedigrees and diagnosis

Study participants were obtained from four families. Family 1 was a large multigenerational family in which the disorder was traced back seven generations. The family tree contains more than 300 members and was too large for the entire pedigree to be depicted. Fig 1 shows the pedigree for selected por-

tions of the family in whom the majority of samples were obtained. This family had a long history of hyperuricaemia, reduced fractional excretion of uric acid, and renal failure, inherited in an autosomal dominant fashion, with clinical findings consistent with FJHN. Family 2 was a large multigenerational family that also segregated FJHN as a highly penetrant autosomal dominant trait. Family 3 has

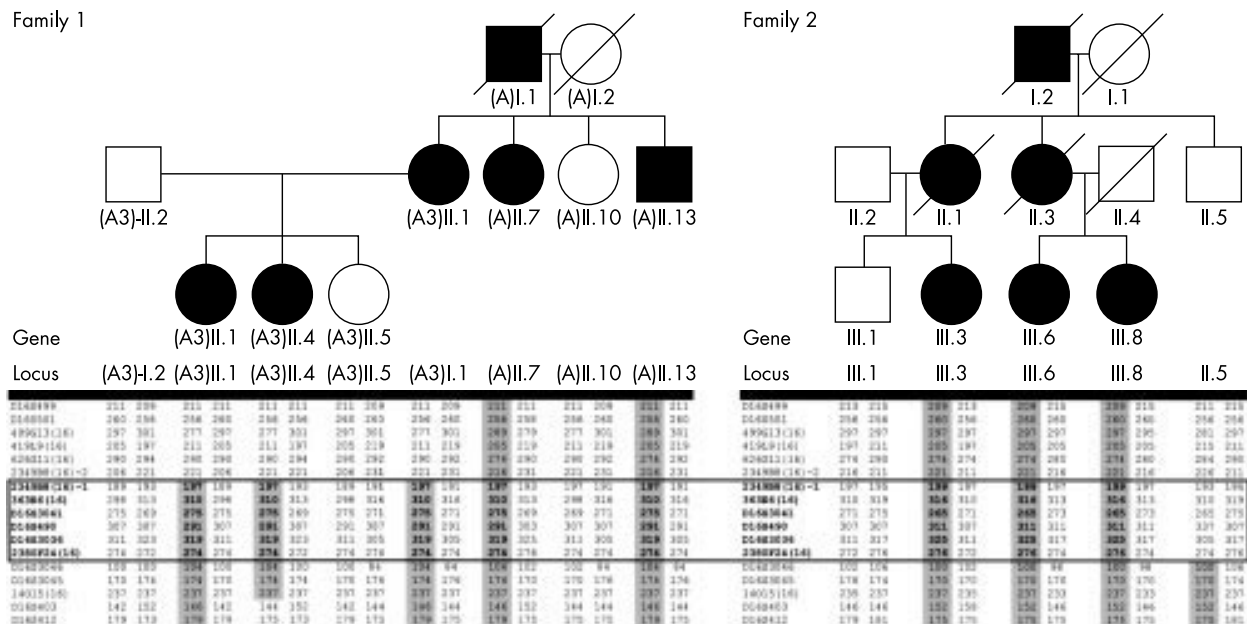


Figure 3 Haplotype results indicating the minimal genetic interval on chromosome 16 segregating with the FJHN phenotype in families 1 and 2. FJHN affected subjects are indicated by shaded symbols. Genetic STRP loci genotyped are listed in positional order in the left column for each family. Haplotypes segregating with the disease locus are shaded. II.5 from family 2 is unaffected, but has inherited the disease associated haplotype for the interval D16S412-D16S3046, indicating that this region does not contain the FJHN disease locus. The boxed region indicates the minimal haplotype region segregating with the FJHN in both families, indicating that the FJHN gene is within the interval flanked by 2349B8(16)-2 and D16S3046.

previously been reported to suffer from medullary cystic disease, hyperuricaemia, and gout,³ inherited in an autosomal dominant fashion (fig 1). A sample was obtained from one affected family member from family 4. Family 4 was previously extensively reported as suffering from familial hyperuricaemia and renal disease but no medullary cysts, findings consistent with a diagnosis of FJHN.⁴

All participating family members provided informed consent to protocols approved by institutional review boards at Wake Forest School of Medicine and the University of Pittsburgh. Serum uric acid and serum creatinine measurements were performed, and 24 hour urine collections for uric acid and creatinine were obtained. The creatinine measurements were performed by the Jaffe alkaline picrate kinetic method.²² The uric acid measurements were performed on the ADVIA 1650 Chemistry System. The uric acid determination method is based on the Fossati enzymatic reaction using uricase with a Trinder-like endpoint.²³ Estimates of creatinine clearance, as determined by the Cockcroft-Gault formula,²⁴ were made using the patient's weight or ideal body weight, whichever was less. Renal insufficiency was defined as an estimated creatinine clearance less than 80 ml/min. Enuresis was defined as persistent bed wetting after the age of 4 years.

Patients were considered to be definitely affected if they met the following criteria: (1) hyperuricaemia, defined as serum uric acid levels greater than 2 SD above the age and gender adjusted norms for the population²⁵⁻²⁶ or a history of gout and current treatment with allopurinol, and (2) reduced fractional excretion of uric acid (<5% for men and <6% for women) or a reduced creatinine clearance of less than 80 ml/min. (In general, people with a creatinine clearance less than 80 ml/min will start developing a raised fractional excretion of uric acid²⁷ and, as such, family members with renal insufficiency could not have their fractional excretion of uric acid used as a determinant of FJHN.) Family members were defined as clinically unaffected if the serum uric acid level was within 1 SD of the age and gender adjusted norms for the population.²⁵⁻²⁶

DNA marker analysis

Genomic DNA was extracted from peripheral blood by standard methods using the QIAamp blood kit (Qiagen). We performed genetic linkage studies for 90 subjects from two extended multigenerational families diagnosed with FJHN (families 1 and 2, fig 1). Available family members were genotyped for STRP (short tandem repeat polymorphism) type genetic markers spanning the candidate interval. In addition to nine previously reported STRP loci, nine novel STRP loci were developed from a 5.6 Mb physical map of the interval (figs 2 and 3) (MCG and TCH, unpublished data, available at www.sdmgenetics.pitt.edu). These marker loci were PCR amplified by use of fluorescence labelled primers, permitting genotyping by conventional methods.²⁸ PCR products were detected by an ABI 377 fluorescent sequencer and were analysed by GENESCAN 2.1 (Applied Biosystems).

Parametric linkage calculations: lod scores and haplotype analysis

Sublocalisation of the candidate interval was achieved by means of genetic linkage studies and determination of the minimal region of overlap of haplotypes segregating with the FJHN trait in families 1 and 2. Standard two point and multipoint linkage analyses were performed using the VITESSE program.²⁹ Assumptions of the linkage analyses included autosomal dominant transmission, penetrance values of 95-100%, a disease allele frequency of 0.0001, and a phenocopy rate of 1%. To permit identification of haplotypes, a physical map of the FJHN candidate gene region was developed. This map permitted precise localisation of known STRP markers within the region and allowed identification of novel STRP markers at desired locations spanning the interval.

Development of a physical map of the candidate FJHN candidate interval: STRP and gene identification

In order to identify novel STRP type markers spanning the candidate interval and to permit identification of all known and hypothetical genes within the interval, the development

Table 1 Primer sets used in the amplification of STRP loci genotyped in the FJHN/MCKD2 candidate region

Locus	Primer (5'→3')		STRP* size (bp)	STRP type	Relative position†
	Forward	Reverse			
D16S499	TCTCACAGTCTGGAGGCTGGAAG	GGTGGACCCTAATTGCATAGGATTG	210	CA repeat	238 700
D16S501	TGTCCTTAGGGGAAGAGATGTCT	AGGTCAGGGACCTAGTAACTACTC	260	CA repeat	305 100
481E9(16)	CCAGAGCCCTACAGGAGTGTACTG	CAAGACCAGGGGATCACAGTAACT	320	Di	362 700
449G13(16)	CAGCCTGGGCAACAGAGACTC	AGGCGTAAATTCAGAGCAAATAG	300	CA repeat	1 784 000
419L9(16)	GCTGTAATGGTGTGTGTAATCT	AAGAATCTCCAGACTTCATACAC	218	CA repeat	1 983 000
626G11(16)	ATCAGCTTAGCAGACATCTCTCC	CTTGAGTCCCAGCTACTCAGTGG	292	CA repeat	2 019 000
2349B8(16)-2	CACGAGAATCCCTTGAACCTG	TGGCTCTCCACTCAGAGATTTC	214	Penta	2 050 000
2349B8(16)-1	CTGTGGCTGGCTTGTTCCTCAG	TTGGGTGGAGGCAATCCAAGTGC	201	CA repeat	2 133 000
363E6(16)	TGTGTTATTGGTAAAATGCACATA	GGTGGCTCATGCCTGTAATTTGAG	355	Di	2 250 000
D16S3041	Applied Biosystem Linkage Mapping Set, Panel 73		270	CA repeat	2 310 000
D16S490	TGACAGGCACATAGATTATTATGC	CGTACCCGGCTGATTATTTAGAT	357	Tetra	2 390 000
D16S3036	AGATAGGGGCTAGTTTCATTATC	ACAAAGCTGGACATATCACACTAC	310	CA repeat	2 450 000
2380F24(16)	AGGCTGTCTCGAACTCCTGACCT	GGGACTACAGGTGTGTGAATTTGA	272	Di	2 730 000
D16S3046	Applied Biosystem Linkage Mapping Set, Panel 22		110	CA repeat	3 650 000
D16S3045	AGGACGGCTGAATGTCTGCATCA	TTGGGGAGTCCCTAAATGACTTTA	180	CA repeat	3 790 000
14O15(16)	GGCAGAAATGGCACATCTTAACTA	CAGCTGGGTGACAGAGTGAGACT	234	CA repeat	5 040 000
D16S403	Applied Biosystem Linkage Mapping Set, Panel 73		150	CA repeat	5 820 000
D16S412	ACCCAGTAGAGACCATCTTACTC	ACCCAGTAGAGACCATCTTACTC	180	CA repeat	5 952 000‡

*STRP size indicates the region that the PCR amplified band will be in.
†Relative position refers to the locus location on the BAC contig alignment sequence.
‡This position determined using the Human Genome Project data from June 2002.
Amplifications performed using standard Ampliqa Gold Conditions

of a detailed physical/genetic map was initiated.^{30–32} The final alignment contained 67 BACs that span a 5.6 million base region. This region contains two gaps across which a BAC sequence did not align. This contig was screened for all known genes, and STRP loci were identified through the NCBI Human Genome Sequencing Site and GENEMAP 99^{33, 34} gene and STRP loci confirmed on the BAC contig were positioned on the new map. New STRP markers were identified using the tandem repeats finder.^{35, 36} Candidate STRP sites were then selected and primers designed using Oligo 4.2 software (table 1).

Several sources of information were used to identify genes in the candidate region: the Human Genome Project Working Draft at UCSC,³¹ the Sanger Centre's ENSEMBLE database,³⁷ and Locus Link.³⁵ NCBI BLAST³² and ePCR were also used on the BAC contig sequence with the BLAST non-redundant and dbEST databases screened. A cDNA contig was made for each candidate gene using all information that was available at the time. The inclusion of all EST data provided for a more accurate representation of the gene. Intron/exon boundaries were determined manually using the consensus splice sequences indicated at GENIO/splice.³⁸ Primers for amplifying candidate genes from genomic DNA were designed using data obtained from the primary contig as well as from available NCBI data (accession numbers in electronic references, NCBI Locus Link, NCBI Entrez).^{39, 40} By means of linkage and haplotype analyses, we refined the FJHN candidate region to a ~1.7 Mb interval. We localised five known genes to this interval. Additionally, using an integrated bioinformatic and bench lab approach, we identified one previously uncharacterised genetic locus within the interval. All exons and intron-exon boundaries of four of these genes were analysed by sequence analysis of genomic DNA from affected and unaffected family members from families 1 and 2.

UMOD exon sequencing

The genomic structure of the *UMOD* gene was determined bioinformatically and was confirmed by sequence analysis. Oligonucleotide primers to amplify 11 of the 12 exons, including intron-exon boundaries (table 2), were designed with Oligo 4.02 (National Biosciences). PCR amplification of the *UMOD* gene was performed as indicated in table 2. Amplified DNA was purified with the QIAquick PCR Purification Kit (Qiagen) and was sequenced using the BigDye Terminator

Cycle Sequencing Kit on an ABI 3700 DNA Analyzer (Applied Biosystems) by the Genomics and Proteomics Core Laboratories of the University of Pittsburgh. Sequence analysis was performed with Sequencher 4.1 software (GeneCodes).

RESULTS

Clinical findings

Over a five year period, clinical testing was performed on 72 members of family 1. Thirty-one met strict criteria to be considered affected (hyperuricaemia with reduced fractional excretion of uric acid or renal insufficiency), 22 were diagnosed as normal, and there were 10 unaffected spouses. For nine family members, a certain diagnosis could not be made. Thirty-four subjects suffered from hyperuricaemia and 28 suffered from renal insufficiency. The pedigrees for families 2 and 3 identify all subjects who suffered from hyperuricaemia or renal insufficiency.

Renal biopsies

Pathological samples were obtained by kidney biopsy in three members of family 1. All three biopsies showed histological changes of tubular atrophy and interstitial fibrosis. Global glomerulosclerosis was present, and there was no evidence of glomerulonephritis. In family 2, a biopsy specimen of an affected female aged 39 years showed widespread tubular atrophy. Necropsy specimens have been reported for family 3.³ The first was that of a 34 year old man reportedly with tubules ensheathed by a dense acellular hyaline material.³ Medullary cysts were present. In another family member, necropsy studies again showed sheathing of the tubules by fibrous tissue. In case 3, tubules were ensheathed by dense acellular hyaline material.³ In family 4, biopsy samples showed focal tubular atrophy with interstitial fibrosis and lymphocytic infiltration. In summary, all biopsy specimens showed focal tubular atrophy with interstitial fibrosis. Necropsy reports indicated tubules ensheathed by dense acellular hyaline material. Zager *et al*¹⁰ and Resnick *et al*¹⁵ have also identified these interstitial deposits of PAS positive material in medullary cystic kidney disease. Immunostaining of these deposits was found to be markedly positive with antibody to Tamm-Horsfall protein by these authors.

Physical map of the candidate interval

Existing genetic and physical maps of the FJHN/MCKD2 candidate interval were generally poorly integrated and identified

Table 2 Primer sets for exonic amplification of the human *UMOD* gene

Exon	Primer (5'→3')		Size (bp)	PCR conditions*	GenBank accession No
	Forward	Reverse			
02–03	TCCTGCTCCAATGACTGAGTTCT	TCAACCCAATGGAATGACCTCTTA	888	B	AY162963
04–05	GGTGGAGGCTTGACATCATCAGAG	GGAATAGGGCTCAGATGGTCTTTG	1493	A	AY162963
04–05 ^b	GCCCTGGCCTCATGTGTAATGTG	GGGTCACAGGGACAGACAGACAAT			AY162963
04–05 ^b	CGGCGGCTACTACGTCTACAACCT	GTAGCTGCCACACATTGACACA			AY162963
06	ACCTCTGGACCTCAAGTAATCTGT	TGATGCCTACTGGCTGAGACAATC	940	A	AY162964
07	ACCAGCAGATTIAGCTTTGAAGTC	GCTTGAACCAGGCAGTGCCTTGAC	475	A	AY162965
08	AGCAGCATCCAGGCACCTTGTCAGA	TGAGGCAGAAGAATCACTGAACC	711	B	AY162967
08 ^b		TCCAAAGACCCCTCTGAATTCTA			AY162967
09	ATTGGAATCCAGGAAGTCTGACTC	GGCAAGCCACTGAAGTCTCTGAG	612	B	AY162968
10	GAGCGGCTCAGAGAACCTTCAGTGG	CCCCTGTCTGTGTACATTCATC	529	B	AY162968
11	GAGCCCTGATGGGTCTGAAGTAG	TCTGAGCCACTCTCCTATTAGA	345	B	AY162969
12	TAGATTGGGCATTCACAAGAATG	ACAGCAGAACCCAGTCTCACTGAG	733	B	AY162970

^bDenotes primers also used in sequencing reactions. Sequencing was performed with BigDye Terminator System from ABI.

*The standard PCR amplification for each exon contains: *Taq* (0.025 U/ μ l), 1 \times PCRx enhancer buffer, 25 nmol/l each dNTP, and 1.5 mmol/l MgSO₄.

A=5% PCRx enhancer. B=1 \times PCRx enhancer buffer, no PCRx enhancer.

Cycling conditions=95-5' + 94-30"/56-30"/72-90" 35X + 72-10'.

relatively few polymorphic genetic markers (STRPs) spanning the interval. This was problematical for our studies as a key marker (D16S3056) was uninformative in our families. The development of an integrated physical and genetic map of the FJHN/MCKD2 candidate interval (summarised in fig 2) permitted us to orient precisely results of previous linkage studies, to localise precisely known genes to the candidate interval, and to develop novel STRP loci. The availability of novel STRP markers permitted refinement of the candidate interval by haplotype analysis. The location of eight known and eight novel STRPs are shown in fig 2. Oligonucleotide primers and conditions used to amplify these STRPs are shown in table 1. The consensus candidate interval for most reports, including our linkage data, supported a candidate interval located in 16p13.11 (D16S499) to 16p12.2 (D16S403). It is apparent from fig 2 that while all linkage intervals reported for FJHN and MCKD2 map to chromosome 16p, not all overlap.

Linkage analyses

Results of genetic linkage analyses localised the gene for FJHN in two of our families (families 1 and 2) to an overlapping interval of ~1.7 Mb (fig 2). For family 1, the gene was localised to an interval of ~3.8 Mb delineated by 2349B8(16) to D16S403 ($Z_{\max}=12.5$ at D16S3041, $\theta=0.01$) and for family 2 the linkage interval was ~17 Mb between D16S404 and D16S3046 ($Z_{\max}=3.2$ at D16S3041, $\theta=0.00$); D16S404 extends ~14 Mb telomeric to D16S499. These findings were consistent with four^{5,6,7,9} of the previous five reports of linkage for FJHN to chromosome 16p. Our candidate interval did not overlap that of Kamatani *et al.*⁸ possibly reflecting genetic heterogeneity (they are the only group to study Japanese FJHN families).

Candidate gene evaluation: mutation analyses

Integration of all known linkage reports for FJHN with our linkage data identified an interval of minimal overlap (<0.3 Mb) from 2349B8(16) to D16S3036 for our linkage results with those of Dahan *et al.*⁷ (fig 2). Our gene identification approach identified one known gene (*B/K* protein, NM_016524)⁴⁰ and one hypothetical gene (*G104*, XM_091332)⁴⁰ in this common interval. Direct sequence analysis of genomic DNA from affected and unaffected family members from families 1 and 2 for coding regions (including intron-exon junctions) of the *B/K* gene and the hypothetical gene *G104* did not identify any alterations of DNA that would account for the FJHN trait in either family (data not shown).

Recognising that the definitive diagnosis of FJHN can be problematical (particularly in milder cases and in younger

people), and incorrect diagnosis of family members may directly affect the boundaries of the candidate gene region, we decided to continue our analysis using only linkage and genotype data from families 1 and 2. For this reason, we excluded from our analysis subjects who could not be diagnosed as affected based on our stated diagnostic criteria. Similarly, subjects who did not have both normal renal function (calculated creatinine clearance greater than 100 ml/min) and a serum uric acid level within 1 SD of the mean adjusted for age and gender^{25,26} were excluded from the analysis to refine the candidate interval.

Haplotype analysis permitted us to identify the smallest common haplotype segregating with the FJHN trait in families 1 and 2 (fig 3). Our sequence analysis had excluded the known (*B/K* protein) and hypothetical (*G104*) genes from the interval 2349B8(16)-D16S3036, permitting us to refine the candidate interval to ~1.2 Mb, from D16S3036-D16S3046. This revised candidate interval contained four genes: butyryl coenzyme A synthetase 1 (*BUCS1*), glycoprotein 2 (*GP2*), G protein coupled receptor, family C group 5, member B (*GPRC5B*), and uromodulin (*UMOD*). Sequence analyses of *GPRC5B* and *UMOD* were performed for genomic DNA from affected and unaffected family members. No coding region polymorphisms were detected in the *GPRC5B* sequence data (data not shown). To determine the genomic organisation of the entire *UMOD* gene, all available *UMOD* mRNA and EST data were aligned to identify any possible splice variants. Using bioinformatic approaches, we determined the genomic structure of the *UMOD* gene (fig 4). This approach led to the identification of 12 exons, one exon more than previously reported.⁴¹ The novel exon identified by our approach and supported by EST data is exon 2. Exons 1 and 2 are non-coding with the ATG start site in exon 3. Based upon EST data, there appear to be alternate 5' transcription start sites so that transcription either begins with exon 1 and proceeds to exon 3 or transcription begins in exon 2 and proceeds to exon 3. In either case, the resultant protein is identical.

UMOD sequence analysis was undertaken on families 1 and 2. Results of sequence analysis showed two different mutations in exon 4 of *UMOD* in families 1 and 2 (fig 5A, B). Mutations are described according to nomenclature guidelines.^{42,43} In each family (g1966_1992del in family 1 and g.1880G>A in family 2), the *UMOD* exon 4 gene mutation segregated completely with the disease phenotype. To evaluate the possible involvement of *UMOD* mutations in MCKD2, we conducted sequence analysis on three affected and five unaffected family members from a smaller family segregating MCKD2 (family 3, fig 1). Analysis of this family identified a third novel mutation (g.1744G>T) in *UMOD*, also in exon 4

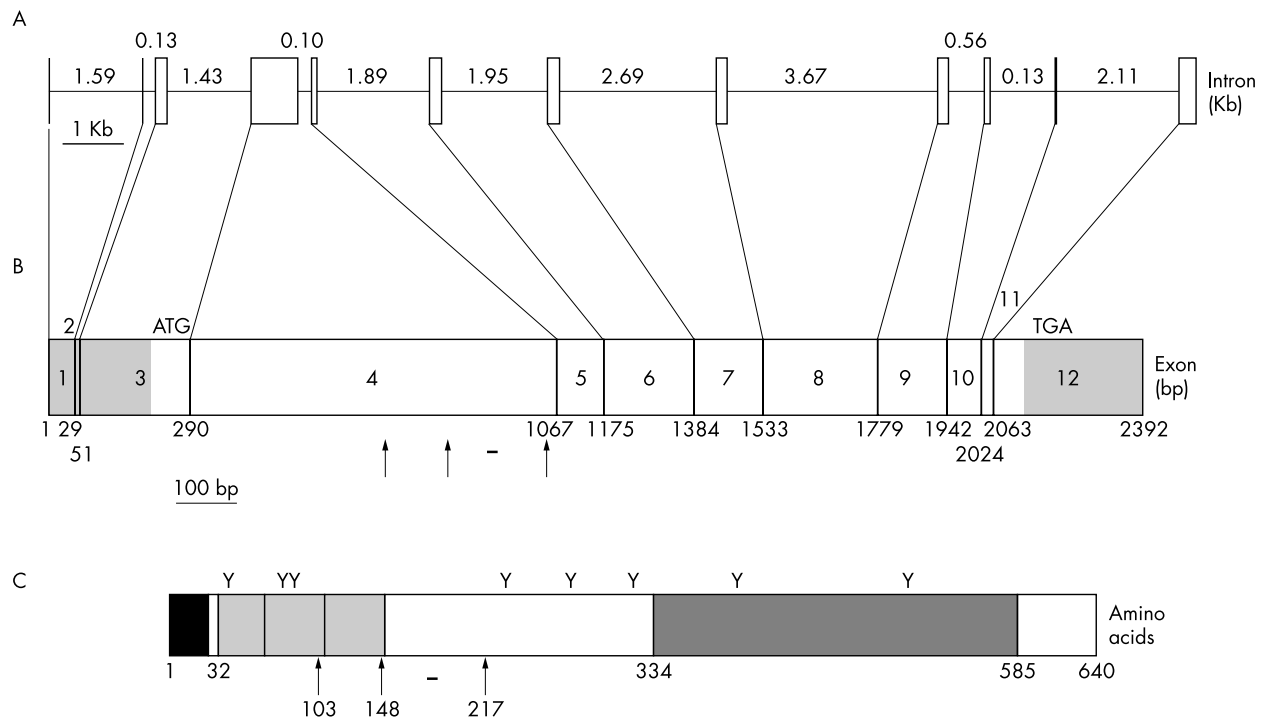


Figure 4 Structure of the human *UMOD* gene. (A) Genomic organisation of the *UMOD* gene. The exons and introns are represented as vertical boxes and horizontal lines respectively. The sizes of each intron are given in Kb. (B) cDNA structure of the *UMOD* gene. The translation start and stop codon are labelled as ATG and TGA, respectively. The 5' and 3' untranslated regions are shaded grey. The arrows indicate the missense mutations identified in this study. The horizontal bar indicates the deletion identified in this study. (C) Structure of the wild type uromodulin protein. The initiation met is amino acid 1. The signal peptide is shown as a black box. The EGF-like domains are shown as syntetic light grey boxes. The ZP domain is shown as a dark grey box. The eight potential glycosylation sites are shown as Y. The missense mutations identified in this study are shown as arrows with the corresponding amino acid listed below. The 9 amino acid deletion is shown as a horizontal bar.

(fig 5C). To evaluate the generality of *UMOD* mutations in FJHN, we performed mutational analyses on an affected member from an extended kindred previously reported.⁴ Analysis showed a fourth novel mutation (g.2086T>C) in exon 4 of *UMOD* (fig 5D).

The specific *UMOD* gene mutations in families 1, 2, and 3 each segregated in affected family members (FJHN in families 1 and 2, and MCKD2 in family 3). None of these mutations was identified in any of the 100 control chromosomes tested. Sequence analysis of the *UMOD* gene in 50 white controls (100 chromosomes) did show the presence of two silent polymorphisms within *UMOD* exon 4. A previously reported synonymous SNP⁴⁴ located at C174 has a T allele frequency of 82% and a C allele frequency of 18% for our samples. A novel synonymous SNP located at V287 has a G allele frequency of 87% and an A allele frequency of 13%. No polymorphisms affecting the translation of uromodulin were detected in any of the 100 control chromosomes examined.

Genotype-phenotype correlation

In family 1, 36 family members carried the mutation and 26 family members did not. Thirty-two of 36 (89%) genetically affected subjects suffered from hyperuricaemia (as defined in Methods). Twenty-eight of 32 (88%) genetically affected family members had an estimated creatinine clearance less than 90 ml/min when measured after the age of 18 years. Ten of 36 (28%) subjects carrying the *UMOD* mutation suffered from enuresis. The fractional excretion of uric acid was less than 6% in all genetically affected men and less than 5% in all genetically affected women with an estimated creatinine clearance greater than 70 ml/min. (The fractional excretion of uric acid increases in patients as renal function declines.²⁷) Thirty-two of 36 subjects carrying the *UMOD* mutation met the strict clinical criteria required to be diagnosed as affected. The

remaining four were women who had normal serum uric acid levels despite low fractional excretions of uric acid. Two of these women had mild renal insufficiency. The serum uric acid levels remained normal or borderline on testing over several years in three of these women. Five family members who did not carry the *UMOD* mutation had serum uric acid levels which were raised but which were not greater than 2 SD above the mean.

In family 2, nine of nine patients with the mutation suffered from hyperuricaemia, and nine of nine patients suffered from renal insufficiency. In family 3, two of three family members carrying the mutation suffered from hyperuricaemia, and all three affected family members suffered from renal insufficiency.

DISCUSSION

The findings of this study establish that mutation of the uromodulin gene is responsible for FJHN and for MCKD2. Uromodulin is polymeric in its native form, composed of monomeric subunits of approximately 85 kDa, with 30% of the molecular weight due to carbohydrates and the remaining 70% due to the polypeptide chain.⁴⁵ Electron microscopy showed that the high molecular weight aggregate is composed of thin, intertwining fibres with a zigzag or helical structure. Recent analysis indicates that the filaments consist of two protofilaments wound around each other, forming a right handed helix.⁴⁶ Uromodulin contains a zona pelucida (ZP) domain (fig 4C), a domain which has been shown to be responsible for polymerisation of ZP containing proteins into filaments.⁴⁶ Uromodulin contains a high number of cysteine residues (48 per monomer), allowing for the potential formation of 24 intramolecular disulphide bonds. These cysteine residues are very highly conserved across species (fig 6). It is

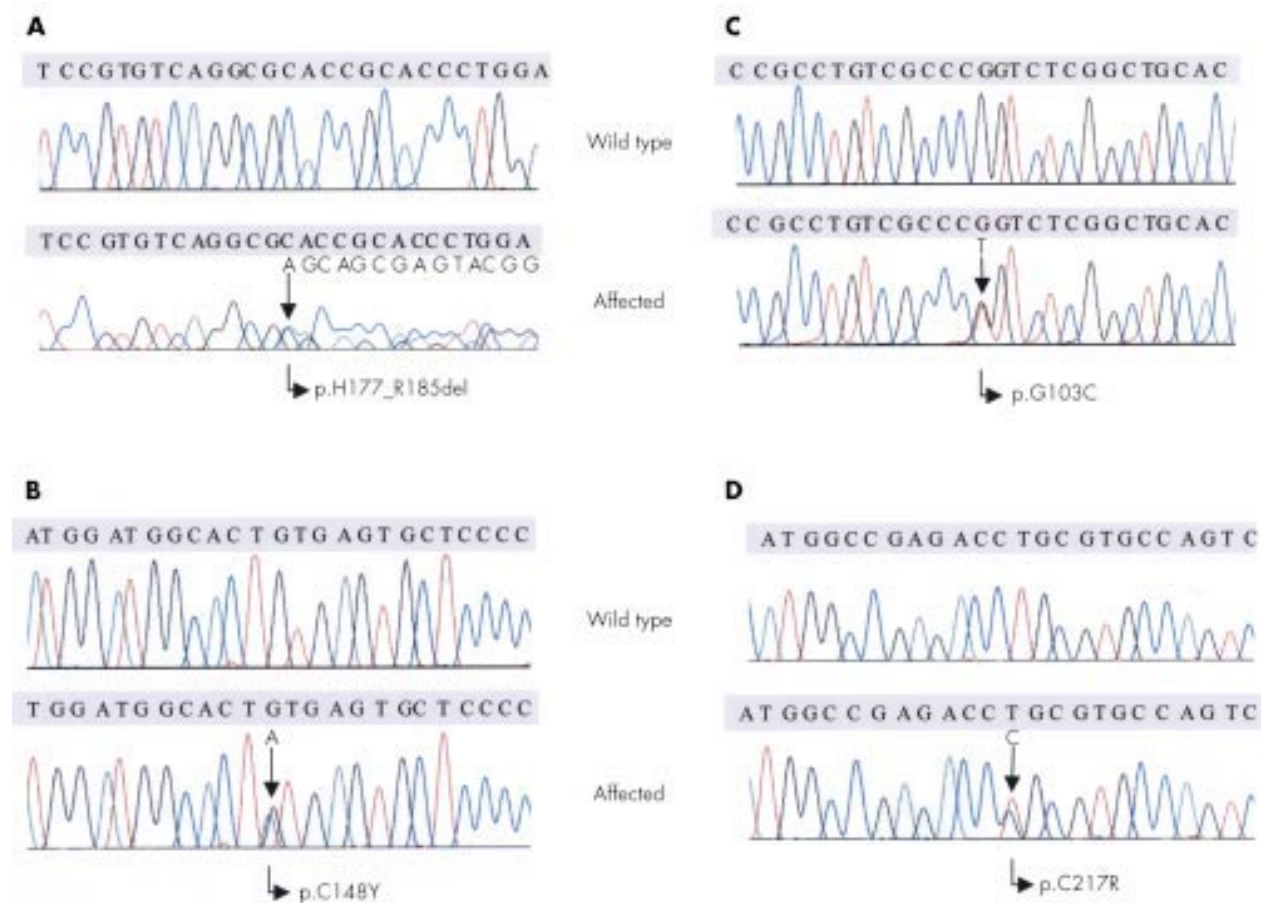


Figure 5 Mutations in *UMOD*. The top sequence in each panel shows wild type sequence. The bottom sequence is from an affected subject. Descriptions of each mutation are given for [genomic; cDNA ; protein] in accordance with nomenclature guidelines. (A) Affected subjects in family 1 were heterozygous for a 27 bp deletion that results in the in frame deletion of amino acids 177-185 (g.1966_1992del; c.529_555del; p.H177_R185del). (B) Affected subjects in family 2 were heterozygous for a missense mutation that changes a conserved cys to tyr (g.1880G>A; c.443G>A; p.C148Y). (C) Affected subjects in family 3 were heterozygous for a missense mutation that changes a gly to a cys (g.1744G>T; c.307G>T; p.G103C). (D) Affected subjects in family 4 were heterozygous for a missense mutation that changes a conserved cys to arg (g.2086T>C; c.649T>C; p.C217R).

interesting to note that all three of the missense mutations identified involve cysteine residues, either by substitution of another residue for cysteine (g.1880G>A; p.C148Y, g.2086T>C; p.C217R) or vice versa (g.1774G>T; p.G103C). Such substitutions may lead to important structural changes through intra- and possibly intermolecular disulphide bond formation, changes which have been documented for other proteins.⁴⁷ The mutation found in family 1, predicted to result in the loss of nine amino acids (g.1966_1992del, p.H177-R185del), is also postulated to cause structural changes in the uromodulin protein. In frame deletions are known to be responsible for a number of diseases including MEN1 (multiple endocrine neoplasia type 1),⁴⁸ Marfan syndrome,⁴⁹ osteogenesis imperfecta,⁵⁰ and pachyonychia congenita.⁵¹ Impaired protein folding can result in premature degradation, and may be a major disease mechanism in genetic deficiencies owing to missense mutations and short in frame deletions/insertions.⁵² It is interesting that five of the nine amino acids deleted in family 1 are highly conserved across species (fig 6). The function of this conserved region is not known, but deletion of an adjacent region of the *UMOD* protein is associated with decreased ability to inhibit binding of immunoglobulin light chains, resulting in cast nephropathy.⁵³

The present investigation provides insight into both the function of uromodulin and the nature of MCKD2 and FJHN. Owing to the similar clinical findings and linkage localisations in MCKD2 and FJHN, it has been suggested that they may

represent a common disease.⁵ The current findings establish that FJHN and MCKD2 are allelic disorders.

The presence of hyperuricaemia in patients with FJHN has been speculated to be the result of abnormalities in the proximal tubular transport of uric acid.¹¹ The present study contradicts this theory, as uromodulin is produced in the thick ascending limb of the loop of Henle, well after proximal tubular transport of uric acid occurs. It is likely that uromodulin is important in maintaining the countercurrent gradient and the medullary loop impermeability. The high rate of enuresis seen in the three families studied (30%) suggests that difficulties in urinary concentration are present. This decreased concentrating ability probably results in increased urinary salt and water excretion, resulting in increased proximal tubular reabsorption of uric acid. Previous studies have documented increased proximal tubular uric acid uptake in patients taking loop diuretics,⁵⁴ and it is likely that a similar mechanism is responsible for hyperuricaemia in this group of patients.

Patients with this deficiency in uromodulin production also suffer from the development of chronic renal failure over time. Previous studies have well documented the abnormal deposition of uromodulin in the interstitium in patients with medullary cystic kidney disease.¹⁰ It had been speculated that this deposition was secondary to pathological changes in the medulla of the kidney,¹⁰ but it appears that these depositions are a primary result of abnormal uromodulin production. It is possible that altered uromodulin binding to various cytokines

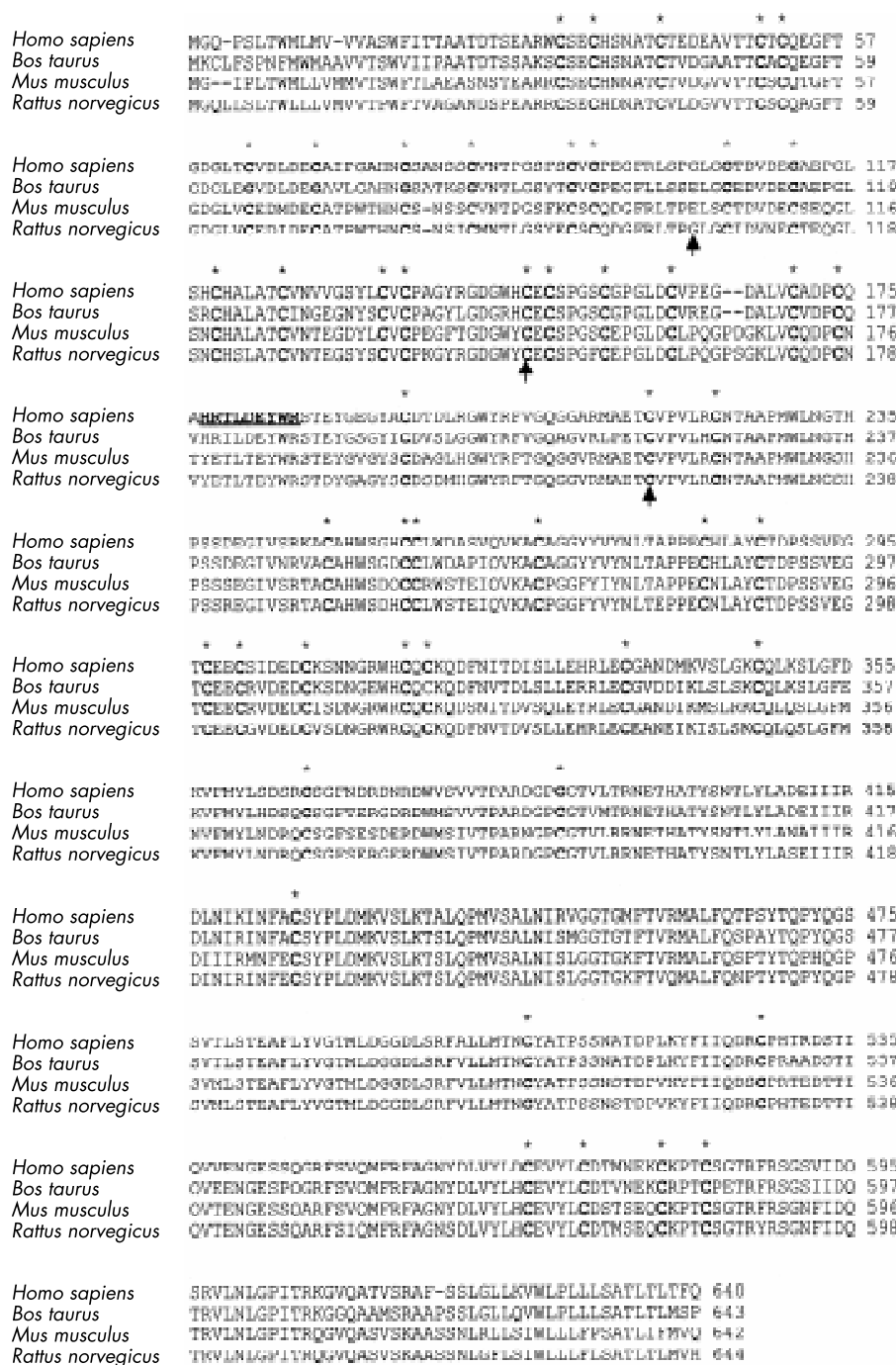


Figure 6 Alignment of the amino acid sequence of human uromodulin (GenBank accession No M17778) with the uromodulin of bovine (GenBank accession No S75958), murine (GenBank accession No NM_009470), and rat (GenBank accession No M63510). All 48 C residues are conserved and shown in bold with an asterisk. The arrows indicate the position of the missense mutations identified in this study. The nine amino acids deleted in family 1 are indicated in bold and underlined.

may result in fibrogenesis. Interstitial nephritis has previously been proposed as a mechanism of pathogenesis in medullary cystic kidney disease.⁵⁵

In summary, mutations in *UMOD* are responsible for FJHN and at least some cases of MCKD2. Pirulli *et al*⁴⁴ recently excluded *UMOD* as a candidate gene for a large Italian family segregating MCKD2. Although they sequenced the entire coding region, this was performed with different primer sets from those used in the current report. Methodological differences in sequencing of exon 4 may account for the different results; however, other possibilities must be considered. Deletion of an entire exon could result in PCR amplification of only the wild type allele, masking the presence of a mutation. Pirulli *et al*⁴⁴ did not analyse the non-coding exons 1 and 2, nor the 5' regulatory region of *UMOD*. It is possible that mutations in exon 1, exon 2, or the regulatory region could result in loss of

uromodulin production.^{56, 57} Alternatively, genetic heterogeneity may exist with another kidney specific gene located in the candidate interval.

Identifying the uromodulin mutation in families with FJHN and MCKD2 is helpful in furthering the clinical characterisation of these disorders. The cardinal feature of both disorders is chronic, progressive renal failure that is tubulointerstitial in origin. Hyperuricaemia was found in the vast majority, but not all family members identified with this disorder. Four women carrying the mutation had normal serum uric acid levels on repeated testing. Despite this, renal insufficiency had developed in two of these women. Similarly, medullary cysts are frequently not seen in radiological examinations of these patients. Given that hyperuricaemia is not always present in FJHN and given that medullary cysts are not always present in MCKD2, and given that these two

conditions result from mutations of the same gene, we believe it is appropriate to designate these two conditions as uromodulin associated kidney disease. These findings provide exciting new insights into the function of the most abundant urinary protein and should act as a further catalyst to research on the functions of uromodulin.

ACKNOWLEDGEMENTS

The authors wish to thank the following people for their contributions: Debra McBride, Betsy McAllister, Scott Satko, Elizabeth Deterding, Mark Hinsdale, M J Pettenati, J Charles Jennette (for providing biopsy specimens), and Elizabeth Phillips. The authors wish to thank Dr Bryson Fleming and members of Asheville Kidney Associates in Asheville, NC for referral of members of family 1, and Dr Scott Stromatt for referral of the proband in family 2. This investigation was supported in part by United States Public Health Service research grant DK62252 from the National Institute of Diabetes & Digestive & Kidney Diseases and by a grant from the National Kidney Foundation of North Carolina Inc.

.....

Authors' affiliations

T C Hart, M C Gorry, L Xu, University of Pittsburgh, School of Dental Medicine, Division of Oral Biology, University of Pittsburgh, Pittsburgh, PA 15261, USA

T C Hart, P S Hart, M M Barmada, Department of Human Genetics, Graduate School of Public Health, University of Pittsburgh, Pittsburgh, PA 15261, USA

A S Woodward, Bakersville Community Medical Clinic Inc, 86 N Mitchell Avenue, Bakersville, NC 28705, USA

Z Shihabi, Department of Pathology, Wake Forest University School of Medicine, Medical Center Blvd, Winston-Salem, NC 27157, USA

J Sandhu, Department of Urology, Cornell Medical School, New York, NY 10021, USA

B Shirts, University of Pittsburgh, School of Medicine, Pittsburgh, PA 15261, USA

H Zhu, Beijing Medical University, Beijing, China

A J Bleyer, Section on Nephrology, Wake Forest University School of Medicine, Medical Center Blvd, Winston-Salem, NC 27157, USA

REFERENCES

- Online Mendelian Inheritance in Man**, OMIM™. Johns Hopkins University, Baltimore, MD. MIM Number: {MIM 603860} : {6/1/1999}. World Wide Web URL :<http://www.ncbi.nlm.nih.gov/Omim/>
- Online Mendelian Inheritance in Man**, OMIM™. Johns Hopkins University, Baltimore, MD. MIM Number: {MIM 162000} : {3/10/1998}. World Wide Web URL :<http://www.ncbi.nlm.nih.gov/Omim/>
- Thompson GR**, Weiss JJ, Goldman RT, Rigg GA. Familial occurrence of hyperuricemia, gout, and medullary cystic disease. *Arch Intern Med* 1978;**138**:1614-17.
- Massari PU**, Hsu CH, Barnes RV, Fox IH, Gikas PW, Weller JM. Familial hyperuricemia and renal disease. *Arch Intern Med* 1980;**140**:680-4.
- Dahan K**, Fuchshuber A, Adamis S, Smaers M, Kroiss S, Loute G, Cosyns JP, Hildebrandt F, Verellen-Dumoulin C, Pirson Y. Familial juvenile hyperuricemic nephropathy and autosomal dominant medullary cystic kidney disease type 2. Two facets of the same disease? *J Am Soc Nephrol* 2001;**12**:2348-57.
- Hateboer N**, Gumbs C, Teare MD, Coles GA, Griffiths D, Ravine D, Futreal P, Rahman N. Confirmation of a gene locus for medullary cystic kidney disease (MCKD2) on chromosome 16p12. *Kidney Int* 2001;**60**:1233-9.
- Scolari F**, Puzzer D, Amoroso A, Caridi G, Ghiggeri GM, Maiora R, Aridon P, De Fusco M, Ballabio A, Casari G. Identification of a new locus for medullary cystic disease, on chromosome 16p12. *Am J Hum Genet* 1999;**64**:1655-60.
- Kamatani N**, Moritani M, Yamanaka H, Takeuchi F, Hosoya T, Itakura M. Localization of a gene for familial juvenile hyperuricemic nephropathy causing underexcretion-type gout to 16p12 by genome-wide linkage analysis of a large family. *Arthritis Rheum* 2000;**43**:925-9.
- Stiburkova B**, Majewski J, Sebesta I, Zhang W, Ott J, Knoch S. Familial juvenile hyperuricemic nephropathy: localization of the gene on chromosome 16p11.2 - and evidence for genetic heterogeneity. *Am J Hum Genet* 2000;**66**:1989-94.
- Zager RA**, Cotran RS, Hoyer JR. Pathologic localization of Tamm-Horsfall protein in interstitial deposits in renal disease. *Lab Invest* 1978;**38**:52-7.
- Cameron JS**, Mora F, Simmonds HA. Gout, uric acid and purine metabolism in pediatric nephrology. *Pediatr Nephrol* 1993;**7**:105-18.
- Tamm I**, Horsfall FL. Characterisation and separation of an inhibitor of viral hemagglutination present in the urine. *Proc Soc Exp Biol Med* 1950;**74**:108-14.
- Muchmore AV**, Decker JM. Uromodulin: a unique 85-kilodalton immunosuppressive glycoprotein isolated from urine of pregnant women. *Science* 1985;**8**:479-81.
- Hoyer JR**, Sisson SP, Vernier RL. Tamm-Horsfall glycoprotein: ultrastructural immunoperoxidase localization in rat kidney. *Lab Invest* 1979;**41**:168-73.
- Resnick JS**, Sisson S, Vernier RL. Tamm-Horsfall protein: abnormal localization in renal disease. *Lab Invest* 1978;**38**:550-5.
- Sherblom AP**, Decker JM, Muchmore AV. The lectin-like interaction between recombinant tumor necrosis factor and uromodulin. *J Biol Chem* 1988;**263**:5418-24.
- Hession C**, Decker JM, Sherblom AP, Kumar S, Yue CC, Mattalilano RJ, Kawashima E, Schmeissner U, Heletky S, Chow EP, Burne CA, Shaw A, Muchmore V. Uromodulin (Tamm-Horsfall glycoprotein): a renal ligand for lymphokines. *Science* 1987;**237**:1479-84.
- Dulawa J**, Rambausek M, Jann K, Ritz E. Tamm-Horsfall glycoprotein interferes with bacterial adherence to human kidney cells. *Eur J Clin Invest* 1988;**18**:87-92.
- Chen WC**, Lin HS, Tsai FJ, Li CW. Effects of Tamm-Horsfall protein and albumin on the inhibition of free radicals. *Urol Int* 2001;**67**:305-9.
- Chen WC**, Lin HS, Chen HY, Shih CH, Li CW. Effects of Tamm-Horsfall protein and albumin on calcium oxalate crystallization and importance of sialic acids. *Mol Urol* 2001;**5**:1-5.
- Schweigert FJ**, Raila J, Haebel S. Vitamin A excreted in the urine of canines is associated with a Tamm-Horsfall like protein. *Ver Res* 2002;**33**:299-311.
- Tietz NW**. *Clinical guide to laboratory tests*. 3rd edition. Philadelphia: Saunders, 1995:186-7.
- Fossati P**, Prencipe L, Berti G. Use of 3,5-dichloro-2-hydroxybenzenesulfonic acid/4 aminophenazone chromogenic system in direct enzymic assay of uric acid in serum and urine. *Clin Chem* 1980;**26**:227-31.
- Cockroft DW**, Gault MH. Prediction of creatinine clearance from serum creatinine. *Nephron* 1976;**16**:31-41.
- Wilcox WD**. Abnormal serum uric acid levels in children. *J Pediatr* 1996;**128**:731-41.
- Mikkelsen WM**, Dodge HJ, Valkenburg H. The distribution of serum uric acid values in a population unselected as to gout or hyperuricemia. *Am J Med* 1965;**39**:242-51.
- Rieselbach RE**, Steele TH. Intrinsic renal disease leading to abnormal urate excretion. *Nephron* 1975;**14**:81-7.
- Hart TC**, Zhang Y, Gorry MC, Cooper M, Marrazita ML, Marks JM, Cortelli JR, Pallos D. A mutation in the SOS1 gene causes hereditary gingival fibromatosis type I. *Am J Hum Genet* 2002;**70**:943-54.
- O'Connell JR**, Weeks DE. The VITESSE algorithm for rapid exact multilocus linkage analysis via genotype set-recoding and fuzzy inheritance. *Nat Genet* 1995;**11**:402-8.
- Zhang Y**, Gorry MC, Hart PS, Pettenati MJ, Wang L, Marks JJ, Lu L, Hart TC. Localization, genomic organization, and alternative transcription of a novel human SAM-dependent methyltransferase gene on chromosome 2p22-p21. *Cytogenet Cell Genet* 2001;**95**:146-52.
- Human Genome Project Working Draft at UCSC** (<http://genome.ucsc.edu/>) for loci shown in table 2 and fig 1 and for genes shown in fig 2.
- BLAST** (<http://www.ncbi.nlm.nih.gov/blast/>).
- NCBI Human Genome Sequencing Site** (<http://www.ncbi.nlm.nih.gov/genome/seq/>) for genes and markers indicated in table 2 and fig 2.
- GENEMAP 99** (<http://www.ncbi.nlm.nih.gov/genemap/>).
- Benson G**. Tandem repeats finder: a program to analyze DNA sequences. *Nucleic Acids Res* 1999;**27**:573-80.
- Tandem Repeats Finder provided at** (<http://c3.biomath.mssm.edu/trf.advanced.submit.html>) [G Benson, 1999] for the identification of STR sites seen in table 2 and fig 2.
- Sanger Center's ENSEMBLE database** (<http://www.ensembl.org/>) for genes shown in fig 2.
- GENIO/splice** (<http://genio.informatik.uni-stuttgart.de/GENIO/splice/>).
- NCBI Locus Link** (<http://www.ncbi.nlm.nih.gov/LocusLink/>) for genes shown in fig 2 - locus ID Nos: XT1 - 64131, COQ7-10229, B/K-51760, G104-162074, GPRC5B-51704, GP2-2813, UMOD-7369, BUCS1-116285.
- NCBI Entrez provided at** (<http://www.ncbi.nlm.nih.gov/Entrez/>) Gene Accession Numbers: XT1-XM_485032, COQ7-NM_016138, B/K-NM_016524, G104-XM_091332, GPRC5B -NM_016235, GP2-NM_001502, UMOD-NM_003361, BUCS1-NM_052956
- Pennica D**, Kohr WJ, Kuang WJ, Glaister D, Aggarwal BB, Chen EY, Goeddel DV. Identification of human uromodulin as the Tamm-Horsfall urinary glycoprotein. *Science* 1987;**236**:83-8.
- Antonarakis SE**. Recommendations for a nomenclature system for human gene mutations. *Hum Mutat* 1998;**11**:1-3.
- Den Dunnen J**, Antonarakis S. Mutation nomenclature extensions and suggestions to describe complex mutations: a discussion. *Hum Mutat* 2000;**15**:7-12.
- Pirulli D**, Puzzer D, De Fusco M, Crovella S, Amoroso A, Scolari F, Viola BF, Maiora R, Caridi G, Savoldi S, Ghiggeri G, Casari G. Molecular analysis of uromodulin and SAH genes, positional candidates for autosomal dominant medullary cystic kidney disease linked to 16p12. *J Nephrol* 2001;**14**:392-6.
- Fletcher AP**, Neuberger A, Ratcliff WA. Tamm-Horsfall urinary glycoprotein: the structure. *Biochem J* 1970;**120**:425-32.
- Jovine L**, Qi H, Williams Z, Litscher E, Wassarman PM. The ZP domain is a conserved module for polymerization of extracellular proteins. *Nat Cell Biol* 2002;**4**:457-61.
- De La Mata I**, Garcia JL, Gonzalez C, Menendez M, Canada J, Jimenez-Barbero J, Asensio JL. The impact of R53C mutation on the three-dimensional structure, stability, and DNA-binding properties of the human Hex-1 homeodomain. *Chem Biochem* 2002;**3**:726-40.

- 48 **Wautot V**, Bercherat C, Lespinasse J, Chambe B, Lenoir GM, Zhang CX, Porchet N, Cordier M, Beroud, Calender A. Germline mutation profile of MEN1 in multiple endocrine neoplasia type 1: search for correlation between phenotype and the functional domains of the MEN1 protein. *Hum Mutat* 2002;**20**:35-47.
- 49 **Robinson PN**, Booms P, Katzke S, Ladewig M, Neumann L, Palz M, Pregla R, Tiede F, Rosenberg T. Mutations of FBN1 and genotype-phenotype correlations in Marfan syndrome and related fibrillinopathies. *Hum Mutat* 2002;**20**:153-61.
- 50 **Pace JM**, Atkinson M, Willing MC, Wallis G, Byers PH. Deletions and duplications of Gly-Xaa-Yaa triplet repeats in the triple helical domains of type I collagen chains disrupt helix formation and result in several types of osteogenesis imperfecta. *Hum Mutat* 2001;**18**:319-26.
- 51 **Terrinoni A**, Smith FJ, Didona B, Canzona F, Paradisi M, Huber M, Hohl D, David A, Verloes A, Leigh IM, Munro CS, Melino G, McLean WH. Novel and recurrent mutations in the genes encoding keratins K6a, K16 and K17 in 13 cases of pachyonychia congenital. *J Invest Dermatol* 2001;**117**:1391-6.
- 52 **Bross P**, Corydon TJ, Andresen BS, Jorgensen MM, Bolund L, Gregersen N. Protein misfolding and degradation in genetic diseases. *Hum Mutat* 1999;**14**:186-98.
- 53 **Huang ZQ**, Sanders PW. Localization of a single binding site for immunoglobulin light chains on human Tamm-Horsfall glycoprotein. *J Clin Invest* 1997;**99**:732-6.
- 54 **Kahn AM**. Effect of diuretics on the renal handling of urate. *Semin Nephrol* 1988;**8**:305-14.
- 55 **Kelly CJ**, Neilson EG. Medullary cystic disease. An inherited form of autoimmune interstitial nephritis? *Am J Kidney Dis* 1987;**10**:389-95.
- 56 **Salowsky R**, Heiss NS, Benner A, Wittig R, Poustka A. Basal transcription activity of the dyskeratosis congenital gene is mediated by Sp1 and Sp3 and a patient mutation in a SP1 binding site is associated with decreased promoter activity. *Gene* 2002;**293**:9-19.
- 57 **Flagiello L**, Cirigliano V, Strazzullo M, Cappa V, Ciccodicola A, D'Esposito M, Torrente I, Werner R, Di Iorio G, Rinaldi M, Dallapiccola A, Forabosco A, Ventro V, D'Urso M. Mutation in the nerve-specific 5' non-coding region of Cx32 gene and absence of specific mRNA in a CMTX1 Italian family. Mutations in brief No 195. Online. *Hum Mutat* 1998;**12**:361.

Want full text but don't have
a subscription?

Pay per view

For just \$8 you can purchase the full text of individual articles using our secure online ordering service. You will have access to the full text of the relevant article for 48 hours during which time you may download and print the pdf file for personal use.

www.jmedgenet.com