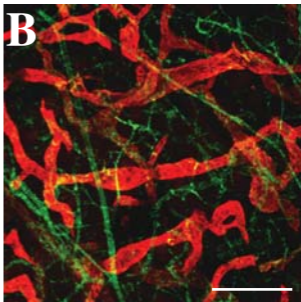
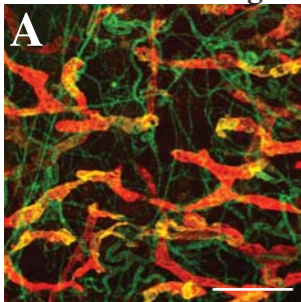


Supplementary Figure 1. Hyperplastic lymphatic vessels of postnatal K14-VEGF-C156S mice regress after AdVEGFR-3-Ig transduction. Immunohistochemical staining with antibodies against LYVE-1 (A and B, red), VEGFR-3 (C and D, red) and PECAM-1 (E and F, red) of skin sections from K14-VEGF-C156S mice transduced with AdVEGFR-3-Ig (A, C and E) or AdLacZ (B, D and F) on the day of birth and analyzed nine days thereafter. The arrows in B, D and F indicate hyperplastic lymphatic vessels, which are absent in the skin of AdVEGFR-3-Ig transduced K14-VEGF-C156S mice. Bar = 50 μ m.

AdVEGFR-2-Ig

Control



Supplementary Figure 2. AdVEGFR-2-Ig has no apparent effect on the blood or lymphatic vessels. Nude mice were transduced with AdVEGFR-2-Ig (**A**) or with AdLacZ (**B**) at the age of four days and the ears were analyzed by whole mount staining with LYVE-1 (red) and PECAM-1 (green) antibodies at the age of two weeks. Bar = 500 μ m.