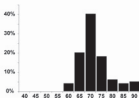


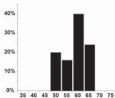
Scherffelia dubia

A. COPII-type 70 nm (n=233)

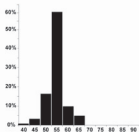


Arabidopsis thaliana

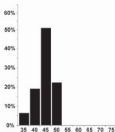
B. COPII-type 60 nm (n=25)



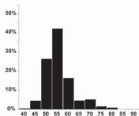
C. COPIa-type 55 nm (n=314)



D. COPIa-type 45 nm (n=31)



E. COPIb-type 55 nm (n=1623)



F. COPIb-type 45 nm (n=51)

