

Rhodobacter sphaeroides WS8 Expresses a Polypeptide That Is Similar to MotB of *Escherichia coli*

DEEPAN S. H. SHAH,¹ JUDITH P. ARMITAGE,² AND R. ELIZABETH SOCKETT^{1*}

*Department of Life Science, Nottingham University, University Park, Nottingham NG7 2RD,¹
and Microbiology Unit, Department of Biochemistry, Oxford University,
Oxford OX1 3QU,² United Kingdom*

Received 1 August 1994/Accepted 9 March 1995

A gene which complements a paralyzed flagellar mutant of *Rhodobacter sphaeroides* was sequenced. The derived protein sequence has similarity to MotB. *R. sphaeroides* MotB lacks the C-terminal peptidoglycan-binding motif of other MotB proteins. This divergence of sequence may reflect the unusual, unidirectional, stop-start action of the *R. sphaeroides* flagellar motor.

The bacterial flagellum is a mechanoenzyme complex which acts as a rotating propeller enabling bacteria to move toward tactic stimuli. Flagellar rotation is driven by a transmembrane ion gradient, usually involving protons (28, 29) or, in some cases, sodium ions (17). Flagellar structure, function, assembly, and genetics have been the subjects of much study (reviewed in references 24, 25, and 26). Purified flagella consist of a long helical filament, a short hook, and a basal structure of two to five rings mounted on a rod (1, 11, 13, 19, 40). In addition to this core complex, there are other components which are not seen with purified flagella; one of these is the cytoplasmic switch complex. This complex includes proteins which are involved in switching rotational direction of bidirectional flagella and proteins involved in coupling the ion gradient to rotation (25, 27). The other known component is the MotA-MotB complex, which is thought to lie in the inner membrane surrounding the innermost rings of the core flagellum (9, 21, 39). The MotA-MotB complex is involved in torque generation (4, 7), with the MotA protein probably functioning as the proton-conducting component (5).

Most of the available information on flagellar structure, function, and genetics is derived from studies of *Escherichia coli*, *Salmonella typhimurium*, *Bacillus subtilis*, and *Caulobacter crescentus*. To extend this range, we are studying flagellar motility in *Rhodobacter sphaeroides*. There are a number of features of *R. sphaeroides* that make it an interesting model for study.

R. sphaeroides is a photosynthetic bacterium which can grow aerobically or anaerobically. It is motile under a wide range of growth conditions (2). Like *C. crescentus*, *R. sphaeroides* has a single flagellum, but it is medially located rather than polar. Upon cell division, the daughter flagellum arises from the side laterally opposing that of the parent cell (2, 38). Thus, *R. sphaeroides* also provides a model for studies on membrane targeting and cell cycle dependence of flagellar assembly. The flagellum rotates unidirectionally in the clockwise direction (3) and can propel the cell at speeds of up to 100 $\mu\text{m/s}$ (34). The cell moves in a series of runs and stops, being reoriented by Brownian motion during stops (3). The stopping frequency and run duration are modulated during a tactic response, resulting in a net migration toward favorable stimuli (33, 37). The mechanism by which the motor is stopped and restarted is unknown.

Our aim in studying the flagellar motor of *R. sphaeroides* is to compare and contrast the motor functions from unidirectionally and bidirectionally rotating flagella and to differentiate functions associated with rotation from those associated with stopping or switching. A previous study using transposon mutagenesis to identify genes involved in the *R. sphaeroides* flagellar motor resulted in the isolation and characterization of one paralyzed mutant, PARA1 (36). This mutant was found to assemble substantially intact flagella but was nonmotile. The wild-type gene which restores motility to PARA1 in *trans* was isolated on a 3-kb *BglII-SalI* fragment (36). In this note, we present the sequence and analysis of the gene affected in PARA1.

Figure 1 illustrates a partial restriction map of the 2.4-kb *SphI-SalI* fragment that contains the *para1* gene. The *para1* gene has been shown to be transcribed in the *SphI*-to-*SalI* direction (36). Complementation analysis using various subclones in the broad-host-range vector pRK415-1 (20) revealed that the region between *BstEII* and *SalI* was sufficient to complement PARA1 but required read-through transcription from the *tet* promoter in the vector.

The nucleotide sequence of this 1.6-kb *BstEII*-to-*SalI* fragment containing *para1* was determined on both strands, using subclones and internal oligonucleotide primers. The sequencing reactions were carried out with the Sequenase kit (U.S. Biochemical). Deaza-G mixes were used, and the reactions were carried out at 42°C to alleviate some of the problems associated with sequencing GC-rich DNA. Analysis of the sequence with the GeneJockey program (Biosoft, Cambridge, England) revealed only one long open reading frame (ORF) which spanned the site of transposon insertion in PARA1 (between positions 996 and 997). This ORF runs from positions 139 to 1137 on the *BstEII-SalI* fragment (Fig. 2, positions 13 to 1011). The codon usage in this ORF matches the high GC bias of *R. sphaeroides*. There is a putative ribosome binding site (GAGG) (Fig. 2, bases 2 to 5) which resembles sequences for ribosome binding sites in many bacteria (15, 22, 35, 41).

In the mutant strain PARA1, the *TnphoA* has inserted such that the *phoA* gene is in frame with the *para1* gene, as indicated by the production of a fusion protein (36). Sequence primed from the transposon toward the 3' end of *para1* showed that the transposon had inserted very near the end of the gene, deleting only four amino acids (RSPR) from the predicted coding sequence, which ends at TGA 1009 (Fig. 2). After this stop sequence, there is a potential stem-loop in the sequence running from positions 1115 to 1151 as indicated in Fig. 2.

* Corresponding author. Phone: 1159-513234. Fax: 1159-513251. Electronic mail address: PLZRES@VAXA.CCC.Nottingham.AC.UK.

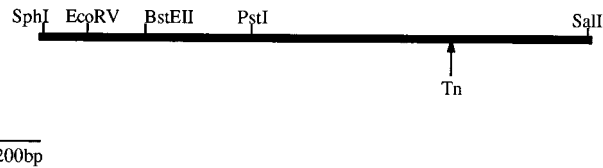


FIG. 1. Partial restriction map of the *SphI-SalI* fragment which contains the *motB* gene. The site of *TnphoA* insertion in PARA1 is marked with an arrow.

The predicted polypeptide consists of 332 amino acids and has a predicted molecular weight of 35,318 and a pI of 9.55. It is rich in arginine, proline, and histidine. Searches using the database at the European Molecular Biology Laboratory (Heidelberg, Germany) and alignments using the BESTFIT and GAP programs from the University of Wisconsin Genetics Computer Group (UWCGC) (12) showed that the Para1 polypeptide is homologous to the MotB proteins encoded by *E. coli* (19.9% identity, 40.2% similarity) and *B. subtilis* (17.2% identity, 43.9% similarity) (32, 39). Para1 showed homology to a partial sequence of MotB from *Vibrio parahaemolyticus* (31) (data not shown), but only the first 200 amino acids of *Vibrio*

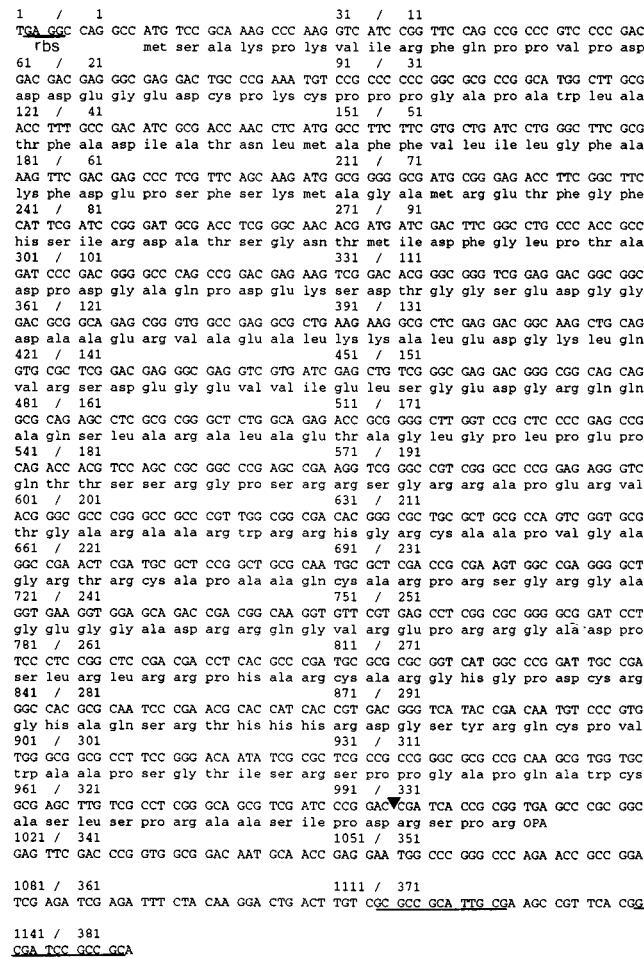


FIG. 2. Nucleotide sequence and deduced amino acid sequence of the *motB* region of the *SphI-SalI* fragment, running from the putative ribosome binding site (rbs) to a potential stem-loop (inverted repeats of stem are underlined). The MotB ORF runs from position 13 to the TGA stop at 1009, and the transposon insertion site in PARA1 is marked with an arrowhead between positions 996 and 997.



FIG. 3. ALIEN multiple sequence alignment of MotB sequences from *E. coli*, (*motbe*), *B. subtilis* (*motbb*), and the MotB ORF shown in Fig. 2 (*motbr*). #, identical residues; ~, conservative substitutions. Conserved residues in *E. coli* and *B. subtilis* proposed to be involved in peptidoglycan binding (10) are underlined. The extent of the putative membrane-spanning region is marked underneath the sequence with M & arrows. *E. coli* MotB residues found by Blair and coworkers (6) to give dominant nonmotile phenotypes when mutated are marked with triangles.

sequence were available for analysis. Given these homologies, we have designated the *R. sphaeroides* gene as *motB* rather than *para1*. The amino acid sequence is presented underneath the nucleotide sequence in Fig. 2. At the N terminus of MotB there is a region of 20 amino acids which has the characteristic positively charged N terminus and hydrophobic proline-containing central region of a signal sequence, but it is not predicted to be cleaved by signal peptidase when tested by the UWCGC Sigcleave program.

The SEQNET program ALIEN (developed by Alan J. Bleasby and based on the program described in reference 16) was used to align the predicted MotB polypeptide sequence from *R. sphaeroides* with MotB sequences from *E. coli* and *B. subtilis*, and as seen in Fig. 3, the overall similarity between these three sequences was limited. Optimal pairwise alignments between *E. coli* MotB (39) and *R. sphaeroides* MotB showed more clearly whether residues implicated as essential for motor rotation in *E. coli* MotB (6) were present in *R. sphaeroides* MotB (Fig. 3). Hydropathy profiles determined by using the Genejockey program by the method of Hopp and Woods (18) are very similar for the protein encoded by the *R. sphaeroides motB* gene and the MotB protein of *E. coli*. They both have a predicted single membrane-spanning helix near the N terminus, and the rest of the protein is mainly positively charged and hydrophilic (6, 8). In agreement with this finding, an in-frame fusion of the *phoA* ORF to the C terminus of the *motB* ORF in PARA1 was previously found to produce periplasmic alkaline phosphatase (36).

The difference between the flagellar system in *R. sphaeroides* and those in *E. coli*, *V. parahaemolyticus*, and *B. subtilis* is that the *R. sphaeroides* flagellum rotates unidirectionally, and motility proceeds in a series of stops and starts; stopping the flagellum must require some sort of "brake" or "clutch" (3). In the other bacteria, flagella switch between clockwise and counterclockwise rotation with a very short pause in rotation but with no marked stops (23). This difference in the properties of the flagellar systems may explain why these proteins do not have a high degree of sequence identity. Although the similarities between *R. sphaeroides* MotB and MotB proteins from *E.*

coli, *B. subtilis*, and *V. parahaemolyticus* were not extensive, their quality was judged to be significant by using the UWGCG GAP-random program. This tested the alignments between *R. sphaeroides* MotB and 25 randomized sequences generated from the amino acid content each of the MotB proteins from the other bacteria. The degree of similarity was by far the greatest when the original MotB sequences were aligned.

The highest similarity among all four proteins lies in the region from amino acids 34 to 55 on the *R. sphaeroides* sequence (Fig. 3). This is an area which corresponds to the putative membrane-spanning helix region in the MotB sequence of *R. sphaeroides* and the other three bacterial species.

There is a short consensus region W---(F/Y)AD-----A-F (shown in Fig. 3) for all three MotB proteins within this helix; it is also found in *Vibrio* MotB. Blair and coworkers (6) have identified the adjacent alanine and aspartate residues (underlined above) and the third from last residue, alanine, in this consensus sequence as being required for motor function in *E. coli* (see also Fig. 3). Mutation of the alanine (underlined above) to threonine, the aspartate to asparagine, and the other alanine to valine gave rise to a dominant nonmotile phenotype. It is interesting that these residues are absolutely conserved in MotB of all four species, including the unidirectional flagellum of *R. sphaeroides*. They are not present in the single membrane-spanning region of MotY, a MotB-like component of the *V. parahaemolyticus* sodium-driven flagellar motor (30). These conserved MotB residues seem likely to be involved in important interactions between MotB and other membrane-bound proteins, or they may be involved in forming part of the proton-conducting unit along with MotA.

In the other regions of MotB, there are a few isolated amino acid residues conserved in all four species but no pockets of extensive sequence identity among all of the species (Fig. 3). This finding suggests that these regions may be involved in the species-specific properties of MotB or that their specific sequences are not critical for MotB to function. Only one other functionally important residue (6) outside of the proposed membrane-spanning region, arginine 222 of *E. coli*, is conserved in *R. sphaeroides* (Arg-244) (Fig. 3).

Recently it has been proposed that MotB binds at or near MotA at its N terminus and that its periplasmic C terminus binds to the peptidoglycan wall of the cell (6, 8, 10). This model does not involve MotB in the generation of MS ring rotation, merely in provision of a structurally stable periplasmic environment in which the motor can rotate. This theory fits with the lack of substantial homology in the periplasmic region of MotB in all four species. It has been reported that MotB in *E. coli* has peptidoglycan-binding motifs that are also found in outer membrane proteins which are known to bind peptidoglycan (10). However, the amino acids thought to be responsible for peptidoglycan binding are conserved in *B. subtilis* but not in *R. sphaeroides* (Fig. 3, underlined). It is surprising that these amino acids should be conserved between a gram-positive and a gram-negative bacterium and not between two gram-negative bacteria, given the considerable cell wall structure differences between gram-positive and gram-negative bacteria. There are two possible alternatives to explain this lack of a peptidoglycan-binding region: (i) *R. sphaeroides* MotB may bind to a different component of the cell wall and therefore needs a different sequence; or (ii) there may be an additional protein which carries out the peptidoglycan-binding function, leaving MotB to have an alternative function. In light of the unidirectionality and stop-start action of the *R. sphaeroides* flagellum, MotB in this bacterium may act as a brake to stop the rotating flagellum. It could make contact with the MS ring or even with

the rod. This would fit with the lack of overall homology between *R. sphaeroides* MotB and MotB from other species. There is much greater sequence identity between *E. coli* and *B. subtilis* (27.7% identity, 51.6% similarity) than either has with *R. sphaeroides*, which is consistent with the functional similarity (i.e., bidirectional, switching flagella) of flagellar rotation in these two species.

There is an unusual motif at the C terminus of MotB in *R. sphaeroides* involving a histidine residue at intervals of seven amino acids within an alpha-helical conformation (encoded from bases 802 to 865; Fig. 2). The sequence of this motif is HARCARGHGPDCRGHAQSRTHH.

Modeling studies predict that the histidine residues would lie on the same side of an alpha helix (data not shown); however, the proline residue near the center of the motif would disrupt a helix, giving a potential pincer-like structure. This motif has not been found in other proteins (including other MotB proteins), although there is a much longer series of histidine heptad repeated motifs in the heavy chain of dynein, which is the force-generating protein of eukaryotic cilia and flagella (14). In dynein, however, the repeats are almost perfect (HVIOYSIHVIOYSIHVIOYSTH, etc.) and very extensive, unlike those of MotB. The two proteins are also very different in size. Therefore, any similarity in function is unlikely. Dynein heavy chains make cross-bridges transmitting force between adjacent microtubules in linear motors. The role of MotB in the *R. sphaeroides* flagellar motor is uncertain. It may be involved in force generation or transmission, in which case it is interesting that it possesses a histidine repeat. However, as mentioned above, it may be involved in binding to an alternative component of the outer membrane, in which case the histidine repeat could provide a binding site. Alternatively, the histidine repeat could be involved in the stopping of the flagellum by providing a point of contact with the rotor and acting as a brake.

Further mutagenesis experiments are under way to determine the significance of the His repeat region and other amino acid residues of MotB. This should bring us nearer to an understanding of the role of MotB in flagellar rotation.

Nucleotide sequence accession number. The DNA sequence reported in this paper has been deposited in the EMBL database (accession number X85136).

This work was supported by SERC grant GR/H04084 to R.E.S. for D.S.H.S. and initially by an SERC grant to J.P.A. for R.E.S. This work also benefited from the use of the SEQNET facility at SERC Daresbury Laboratory. We are also grateful to the Royal Society, the Society for General Microbiology, and Nottingham University for equipment and new lecturer grants.

We thank Dudley Page for helpful discussions on the structure of *motB* and Ian Goodfellow for assistance with the GCG package.

REFERENCES

1. Aizawa, S.-I., G. A. Dean, C. J. Jones, R. M. Macnab, and S. Yamaguchi. 1985. Purification and characterization of the flagella hook-basal body complex of *Salmonella typhimurium*. *J. Bacteriol.* **161**:836-849.
2. Armitage, J. P., W. A. Havelka, and R. E. Sockett. 1990. Methylation independent taxis in bacteria. *Symp. Soc. Gen. Microbiol.* **46**:177-197.
3. Armitage, J. P., and R. M. Macnab. 1987. Unidirectional, intermittent rotation of the flagellum of *Rhodospirillum rubrum*. *J. Bacteriol.* **169**:514-518.
4. Blair, D. F., and H. C. Berg. 1988. Restoration of torque in defective flagellar motors. *Science* **242**:1678-1681.
5. Blair, D. F., and H. C. Berg. 1990. The MotA protein of *E. coli* is a proton-conducting component of the flagellar motor. *Cell* **60**:439-449.
6. Blair, D. F., D. Y. Kim, and H. C. Berg. 1991. Mutant MotB proteins in *Escherichia coli*. *J. Bacteriol.* **173**:4049-4055.
7. Block, S. M., and H. C. Berg. 1984. Successive incorporation of force-generating units in the bacterial rotary motor. *Nature (London)* **309**:470-472.

8. **Chun, S. Y., and J. S. Parkinson.** 1988. Bacterial motility: membrane topology of the *E. coli* MotB protein. *Science* **239**:276–278.
9. **Dean, G. E., R. M. Macnab, J. Stader, P. Matsumura, and C. Burks.** 1984. Gene sequence and predicted amino acid sequence of the MotA protein, a membrane-associated protein required for flagellar rotation in *Escherichia coli*. *J. Bacteriol.* **159**:991–999.
10. **De Mot, R., and J. Vanderleyden.** 1994. Microcorrespondence. *Mol. Microbiol.* **12**:333–334.
11. **De Pamphilis, M. L., and J. Adler.** 1971. Fine structure isolation of the hook-basal body complex of flagella from *Escherichia coli* and *Bacillus subtilis*. *J. Bacteriol.* **105**:384–395.
12. **Devereux, J., P. Haerberli, and O. Smithies.** 1984. A comprehensive set of sequence analysis programs for the VAX. *Nucleic Acids Res.* **12**:387–395.
13. **Dimmit, K., and M. Simon.** 1971. Purification and thermal stability of intact *Bacillus subtilis* flagella. *J. Bacteriol.* **105**:369–375.
14. **Garber, A. T., J. D. Retief, and G. H. Dixon.** 1989. Isolation of dynein heavy chain cDNAs from trout testis which predict an extensive carboxyl-terminal α -helical coiled-coil domain. *EMBO J.* **8**:1727–1734.
15. **Gold, L., D. Pribnow, T. Schneider, S. Shinedling, B. S. Singer, and G. Stromo.** 1981. Translational initiation in prokaryotes. *Annu. Rev. Microbiol.* **35**:365–403.
16. **Higgins, D. G., and P. M. Sharp.** 1989. Fast and sensitive multiple sequence alignments on a microcomputer. *CABIOS* **5**:151–153.
17. **Hirota, N., and Y. Imae.** 1983. Na⁺-driven flagellar motors of an alkalophilic *Bacillus* strain YN-1. *J. Biol. Chem.* **258**:10557–10581.
18. **Hopp, T. P., and K. R. Woods.** 1981. Prediction of protein antigenic determinants from amino acid sequences. *Proc. Natl. Acad. Sci. USA* **78**:3824–3828.
19. **Johnson, R. C., M. P. Walsh, B. Ely, and L. Shapiro.** 1979. Flagellar hook and basal complex of *Caulobacter crescentus*. *J. Bacteriol.* **138**:984–989.
20. **Keen, N. T., S. Tamaki, D. Kobayashi, and D. Trollinger.** 1988. Improved broad-host-range plasmids for DNA cloning in Gram-negative bacteria. *Gene* **70**:191–197.
21. **Khan, S., M. Dapice, and T. S. Reese.** 1988. Effects of *mot* gene expression on the structure of the flagellar motor. *J. Mol. Biol.* **202**:575–584.
22. **Kozak, M.** 1983. Comparison of initiation of protein synthesis in procaryotes, eucaryotes, and organelles. *Microbiol. Rev.* **47**:1–45.
23. **Lapidus, I. R., M. Welch, and M. Eisenbach.** 1988. Pausing of flagellar rotation is a component of bacterial motility and chemotaxis. *J. Bacteriol.* **170**:3627–3632.
24. **Macnab, R. M.** 1987. Flagella, p. 70–83. *In* F. C. Neidhardt, J. L. Ingraham, K. B. Low, B. Magasanik, M. Schaechter, and H. E. Umbarger (ed.), *Escherichia coli* and *Salmonella typhimurium*: cellular and molecular biology, vol. 1. American Society for Microbiology, Washington, D.C.
25. **Macnab, R. M.** 1987. Motility and chemotaxis, p. 732–759. *In* F. C. Neidhardt, J. L. Ingraham, K. B. Low, B. Magasanik, M. Schaechter, and H. E. Umbarger (ed.), *Escherichia coli* and *Salmonella typhimurium*: cellular and molecular biology, vol. 1. American Society for Microbiology, Washington, D.C.
26. **Macnab, R. M.** 1992. Genetics and biogenesis of bacterial flagella. *Annu. Rev. Genet.* **26**:131–158.
27. **Macnab, R. M., and D. J. De Rosier.** 1988. Bacterial flagellar structure and function. *Can. J. Microbiol.* **34**:442–451.
28. **Manson, M. D., P. Tedesco, H. C. Berg, F. M. Harold, and C. van der Drift.** 1977. A proton motive force drives bacterial flagella. *Proc. Natl. Acad. Sci. USA* **74**:3060–3064.
29. **Matsuura, S., J. Shioi, and Y. Imae.** 1977. Motility in *Bacillus subtilis* driven by an artificial proton motive force. *FEBS Lett.* **82**:187–190.
30. **McCarter, L. L.** 1994. MotY, a component of the sodium-type flagellar motor. *J. Bacteriol.* **176**:4219–4225.
31. **McCarter, L. L., and M. E. Wright.** 1993. Identification of genes encoding components of the swarmer cell flagellar motor and propeller and a sigma factor controlling differentiation of *Vibrio parahaemolyticus*. *J. Bacteriol.* **175**:3361–3371.
32. **Mirel, D. B., V. M. Lustre, and M. J. Chamberlin.** 1992. An operon of *Bacillus subtilis* motility genes transcribed by the σ^D form of RNA polymerase. *J. Bacteriol.* **174**:4197–4204.
33. **Poole, P. S., and J. P. Armitage.** 1989. Role of metabolism in the chemotactic response of *Rhodobacter sphaeroides* to ammonia. *J. Bacteriol.* **171**:2900–2902.
34. **Poole, P. S., D. R. Sinclair, and J. P. Armitage.** 1988. Real time computer imaging of free swimming tethered rotating cells. *Anal. Biochem.* **175**:52–58.
35. **Shine, J., and L. Dalgarno.** 1974. The 3'-terminal sequence of *Escherichia coli* 16S ribosomal RNA: complementarity to nonsense triplets and ribosome binding sites. *Proc. Natl. Acad. Sci. USA* **71**:1342–1346.
36. **Sockett, R. E., and J. P. Armitage.** 1991. Isolation, characterization, and complementation of a paralyzed flagellar mutant of *Rhodobacter sphaeroides* WS8. *J. Bacteriol.* **173**:2786–2790.
37. **Sockett, R. E., J. P. Armitage, and M. C. W. Evans.** 1987. Methylation-independent and methylation-dependent chemotaxis in *Rhodobacter sphaeroides* and *Rhodospirillum rubrum*. *J. Bacteriol.* **169**:5808–5814.
38. **Sockett, R. E., J. C. A. Foster, and J. P. Armitage.** 1990. Molecular biology of the *Rhodobacter sphaeroides* flagellum. *FEMS Symp.* **53**:473–479.
39. **Stader, J. S., P. Matsumura, D. Vacante, G. E. Dean, and R. M. Macnab.** 1986. Nucleotide sequence of the *Escherichia coli* *motB* gene and site-limited incorporation of its product into the cytoplasmic membrane. *J. Bacteriol.* **166**:244–252.
40. **Stallmeyer, M. J. B., K. M. Hahnenberger, G. E. Sosinski, L. Shapiro, and D. J. De Rosier.** 1989. Image reconstruction of the flagellar basal body of *Caulobacter crescentus*. *J. Mol. Biol.* **205**:511–518.
41. **Stromo, G., T. Schneider, and L. Gold.** 1982. Characterisation of translational initiation sites in *E. coli*. *Nucleic Acids Res.* **10**:2971–2996.