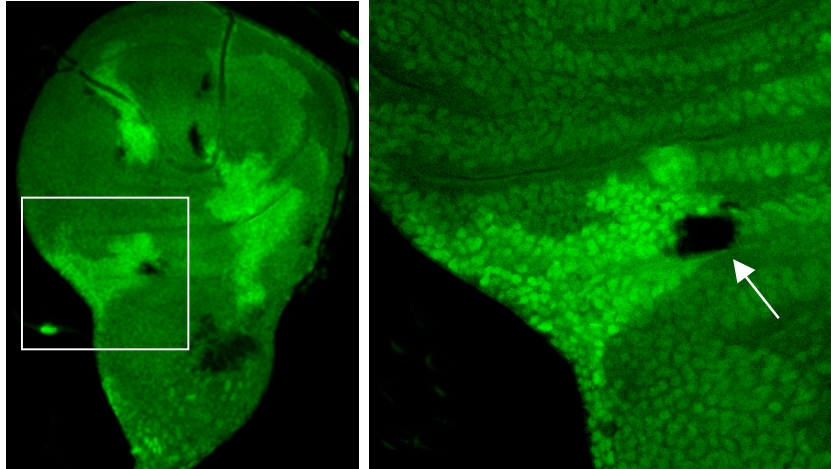


Supplemental Figure 1 , Yamasaki S. et al



Supplemental Figure 1. *Drosophila* Synoviolin functions in cell overgrowth.

Mosaic flies that bear clones of genetically distinct somatic cells either expressing (light green spot) or lacking (dark black spot) Synoviolin demonstrated much smaller Synoviolin mutant clones than their corresponding Synoviolin expressing clones (arrow).