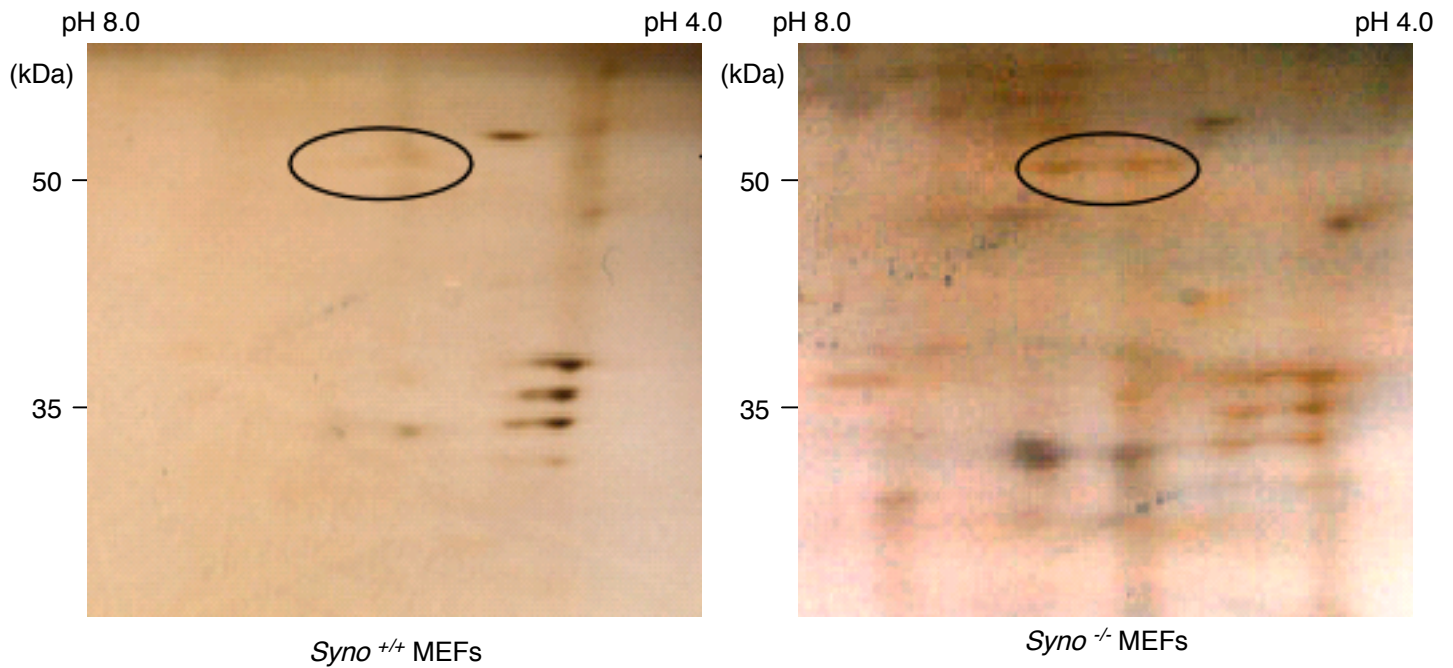


Supplemental Figure 2 , Yamasaki S. et al



Supplemental Figure 2. The proteome analysis of *Syno*^{+/+} and *Syno*^{-/-} MEFs.

After the proteins from *Syno*^{+/+} and *Syno*^{-/-} MEFs were separated by 2-dimensional PAGE, the gels were stained with colloidal blue dye. The spots were excised, in-gel digested with trypsin, and the resulting peptides were analyzed by TOF MS. Each spot was identified by searching peptide spectra against NCBI database. One major spot was p53 (circle).