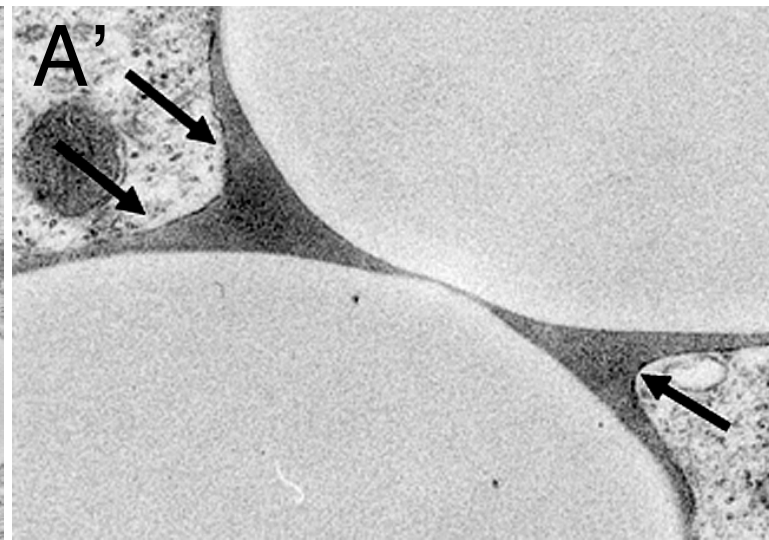
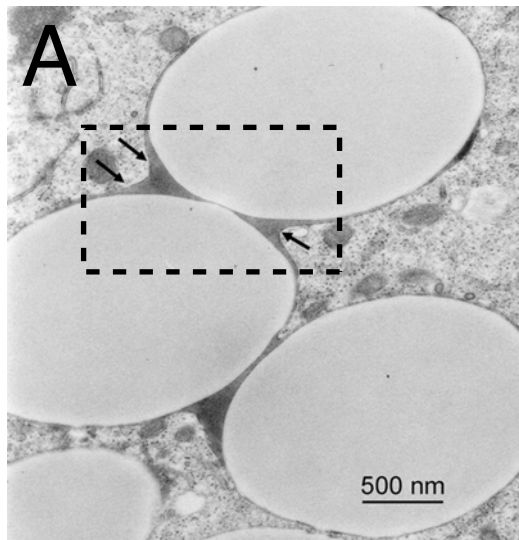
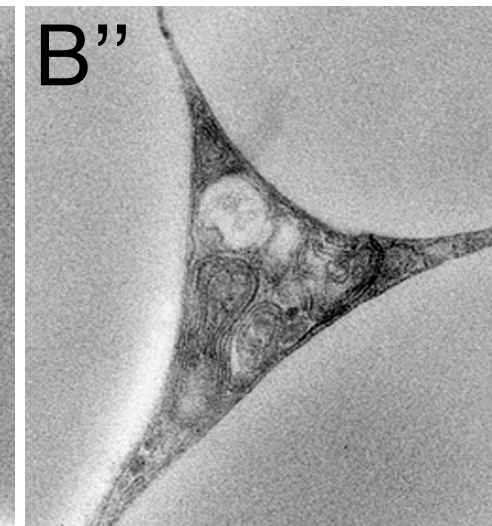
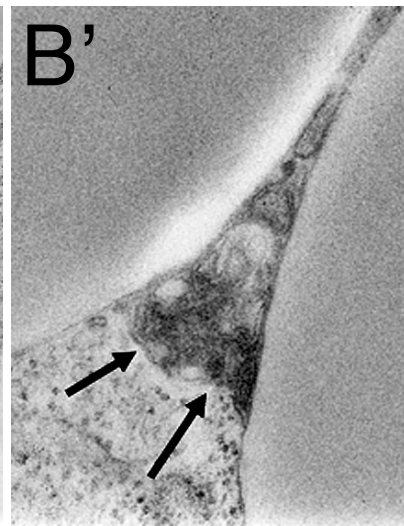
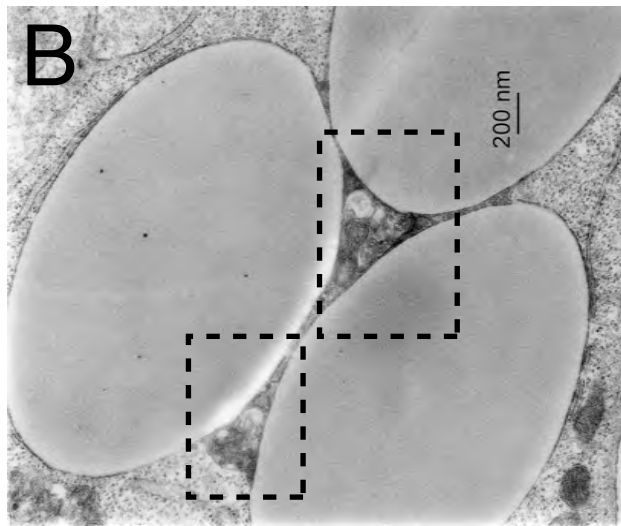


wild type



lamp-1^{-/-}/*lamp-2*^{-/-}



Supplementary Figure 8. *Electron micrographs of wildtype and *lamp-1*^{-/-}/*lamp-2*^{-/-} phagosomes.* Wildtype (A-A') and *lamp-1*^{-/-}/*lamp-2*^{-/-} cells transfected with cDNA encoding FcRs were exposed to IgG-opsonized latex beads for 15 min and allowed to mature for 45 min at 37°C. Cells were immediately fixed and processed for electron microscopy. Dashed boxes were enlarged and are shown in panels A', B' and B''.