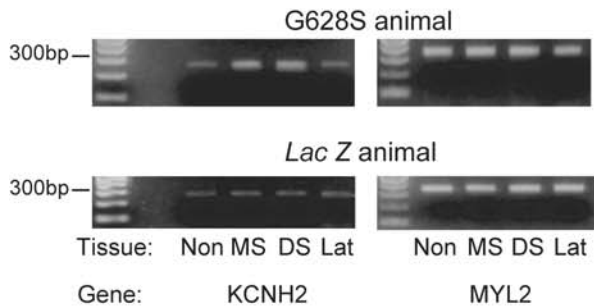
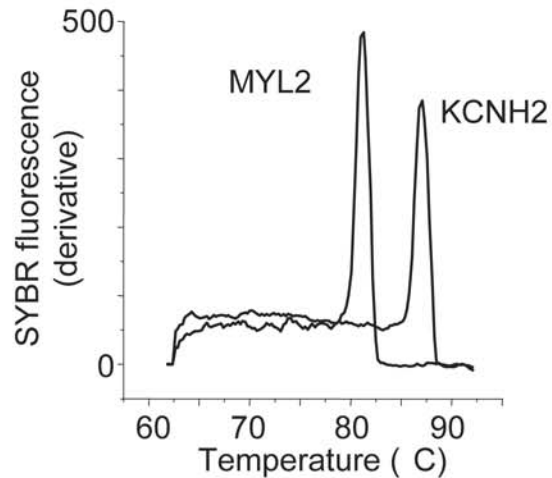
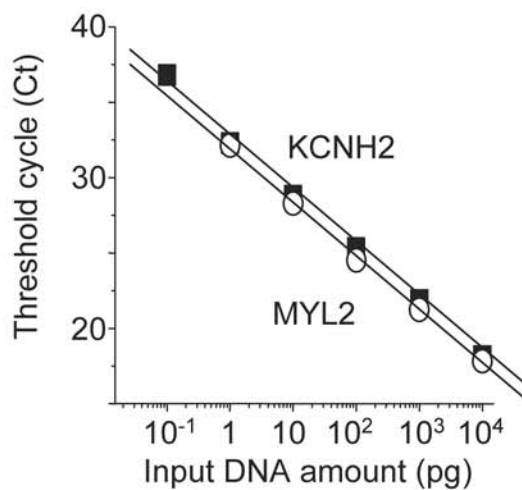
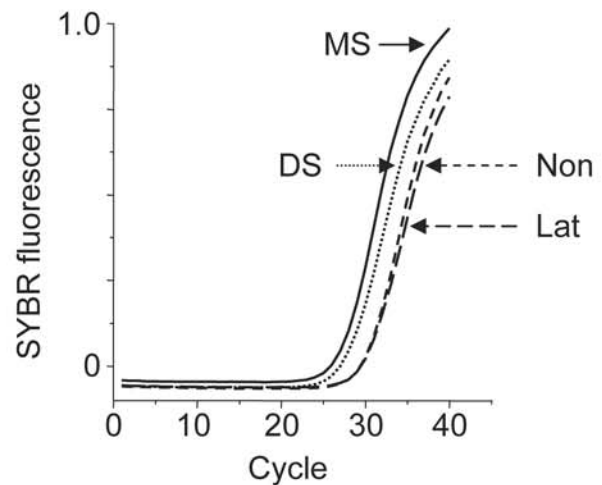


a**b****c****d**

Supplemental Figure 2: Validation of quantitative RT-PCR.

(a) 2% agarose gels of PCR products after 36 cycles of RT-PCR. (b) Dissociation curve of each PCR product. (c) Standard curve generated for quantitation of KCN2H2 and MYL2. The threshold cycle (Ct) is plotted as a function of the measured concentration of input DNA. Slope factor is -3.57 for MYL2, and -3.66 for KCN2H2. R^2 is 0.999 for MYL2 and 0.998 for KCN2H2. Estimated PCR efficacy is 1.906 for MYL2, and 1.876 for KCN2H2. (d) Representative amplification plot from a single G628S animal. Abbreviations are as follows; Non–non-infarcted basal lateral wall. MS–mid-anterior septal infarct border. DS–distal anterior septal infarct border. Lat–anterior lateral infarct border.