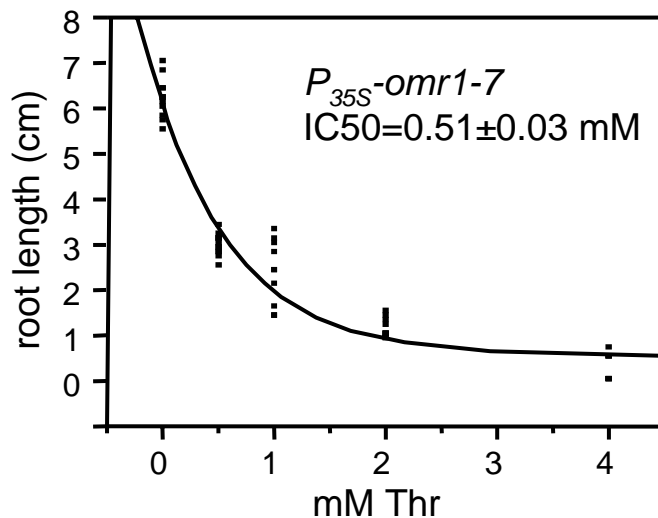
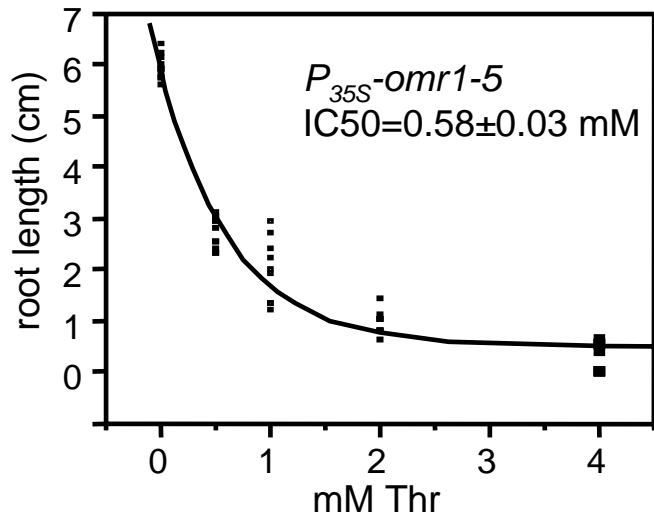
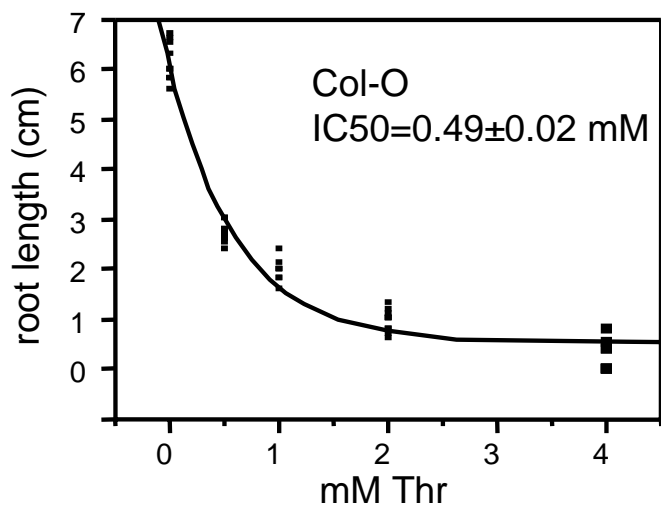


**Supplemental Figure 6A.** THA1 contributes to the elimination of excess Thr. Photograph shows root growth of *tha1* mutant and wild type seedlings on MS agar with 500  $\mu$ M Thr. Graphs show calculation of the Thr  $IC_{50}$  ( $\pm$  st. error) for root elongation of wild type, *tha1-1* and *tha1-2* seedlings. Seeds were germinated on vertical MS agar plates with the indicated Thr concentrations. Root length was measured after 10 days. An exponential decay curve was fitted to measurements of root length (8 to 12 at each Thr concentration) and  $IC_{50}$  concentrations were calculated using the JMP software package.



**Supplemental Figure 6B.** Calculation of the Thr IC<sub>50</sub> (+/- st. error) for root elongation of wild type, *omr1-5* and *omr1-7* seedlings. Seeds were germinated on vertical MS agar plates with the indicated Thr concentrations. Root length was measured after 10 days. An exponential decay curve was fitted to measurements of root length (8 to 12 at each Thr concentration) and IC<sub>50</sub> concentrations were calculated using the JMP software package.