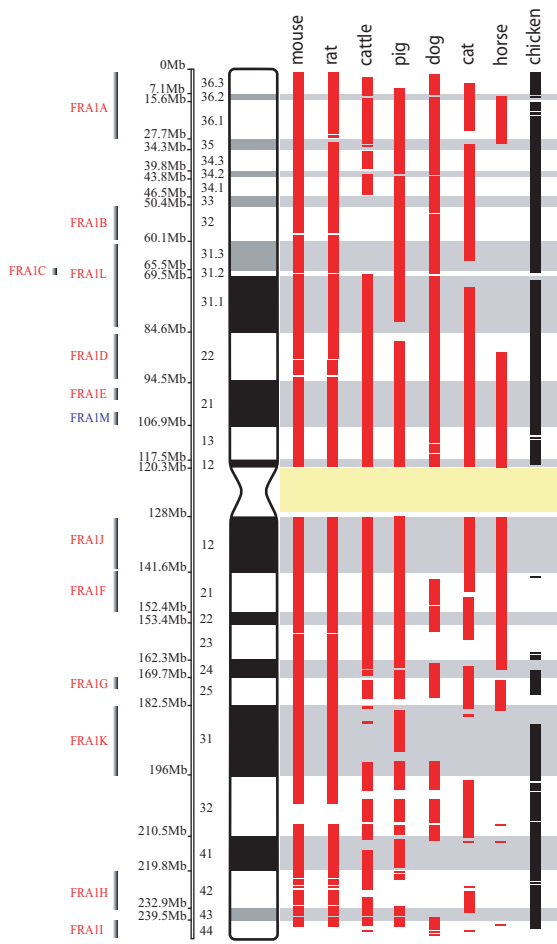
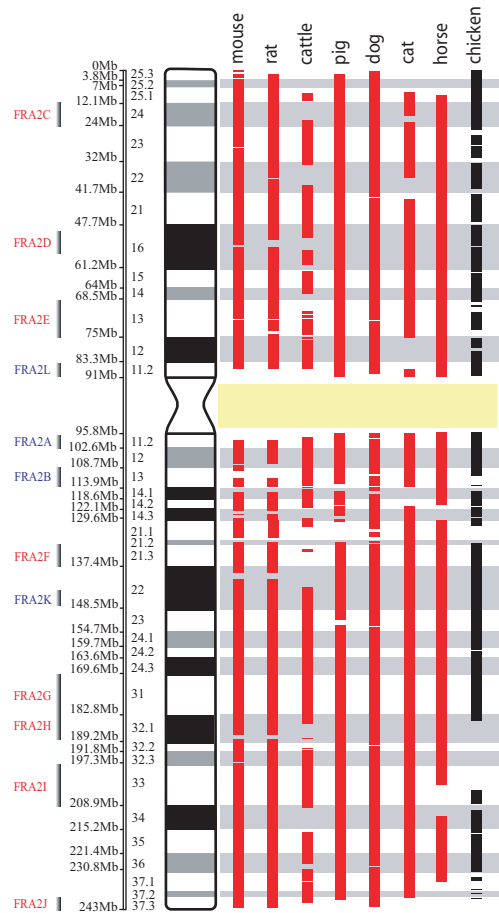


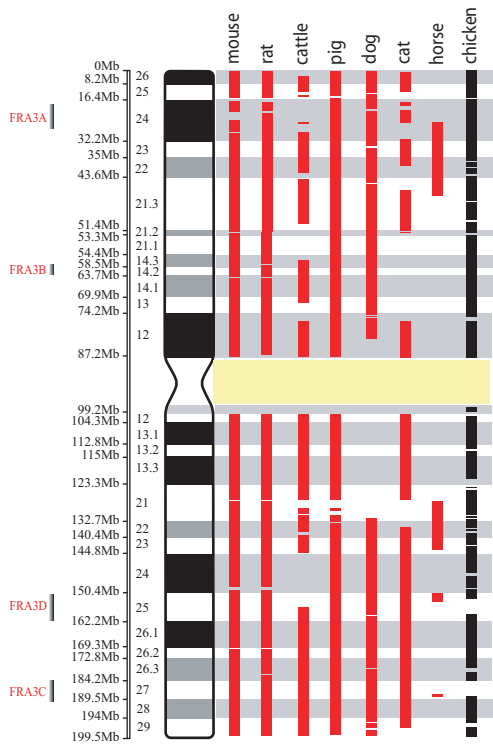
Supplementary Figure 1: Multispecies alignment of all human chromosomes. Red blocks represent the homology syntenic blocks in the seven eutherian species compared and black blocks represent the homology regions with the chicken genome (<http://www.ensembl.org>). The location of human fragile sites (FRA) is given to the left of the ideogram of each human chromosome, red for common fragile sites and blue for rare fragile sites.



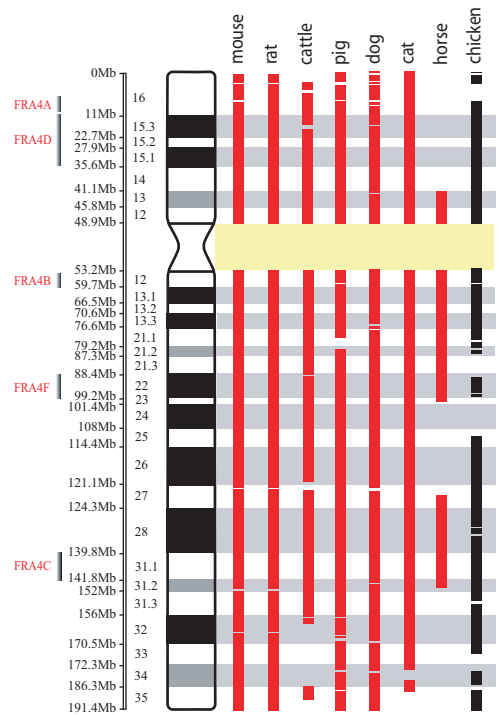
HSA 1



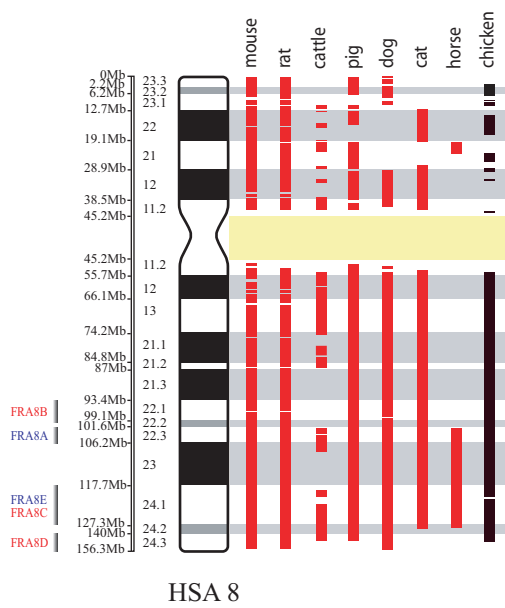
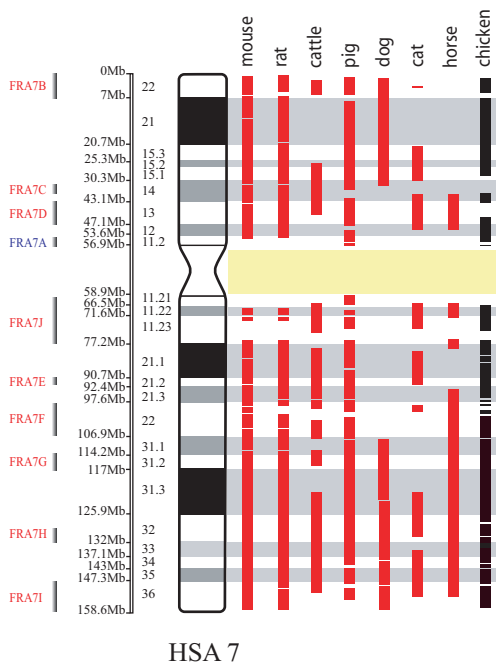
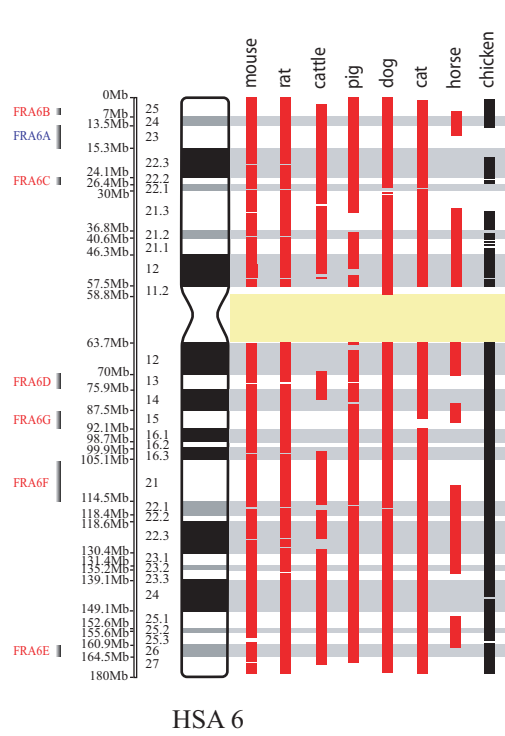
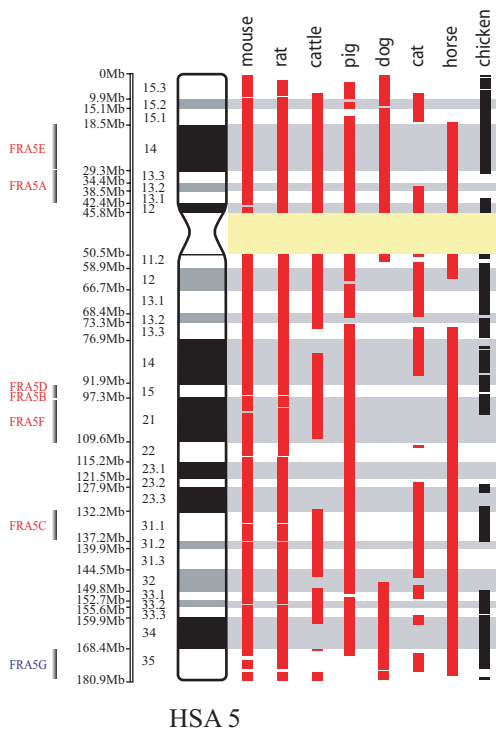
HSA 2

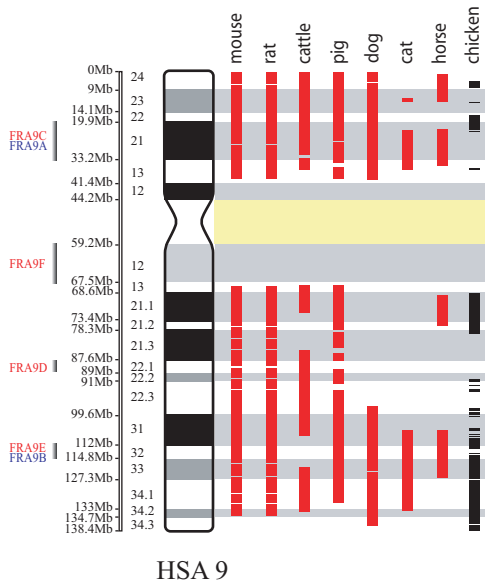


HSA 3

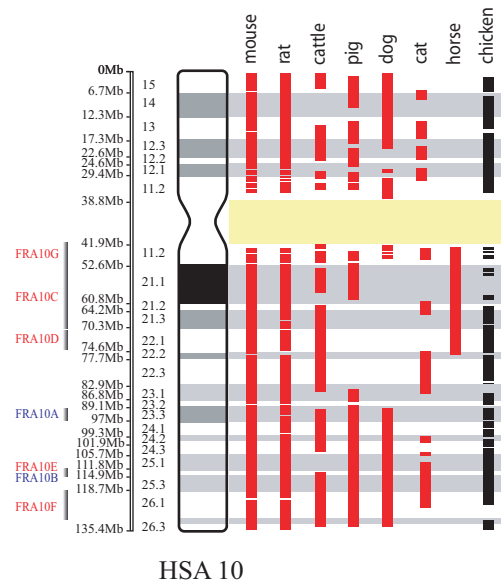


HSA 4

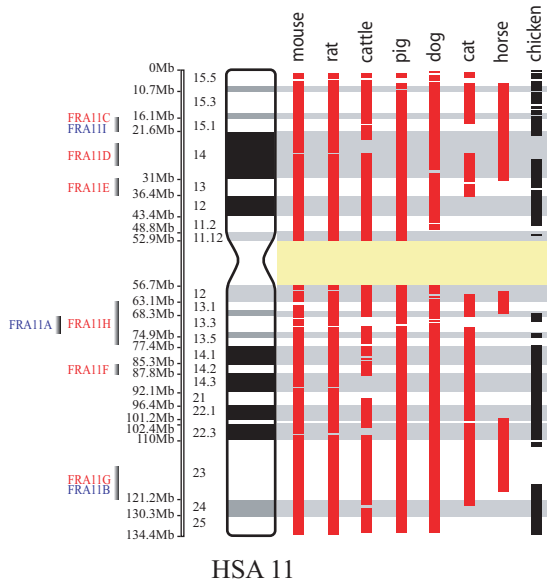




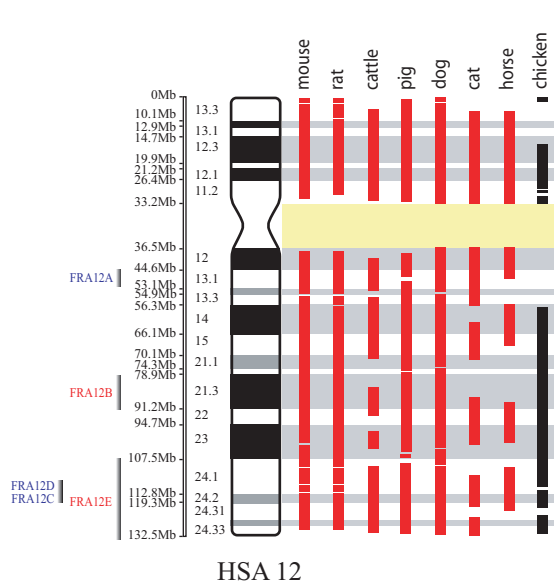
HSA 9



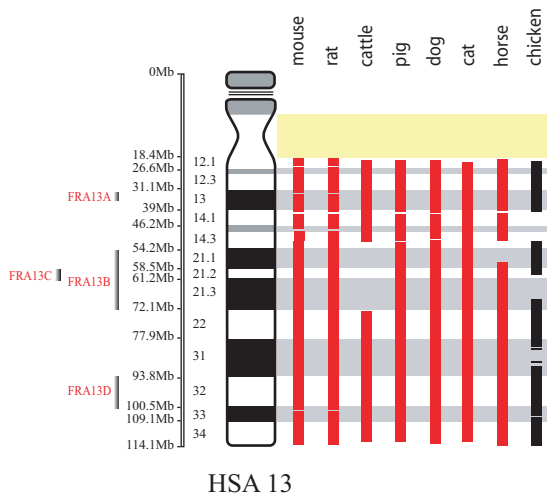
HSA 10



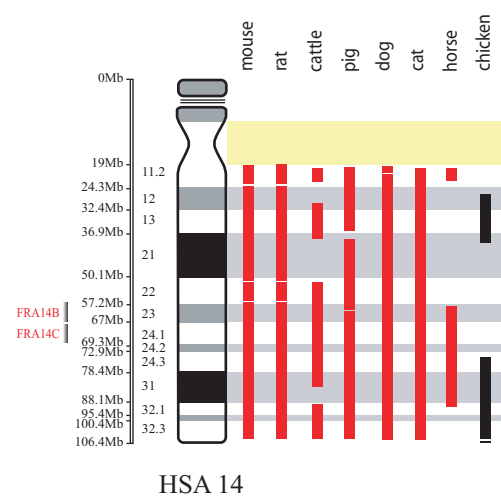
HSA 11



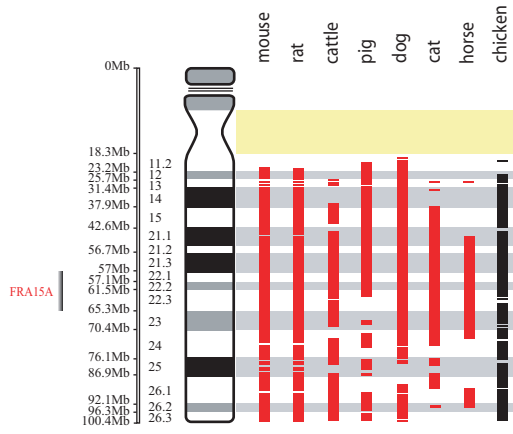
HSA 12



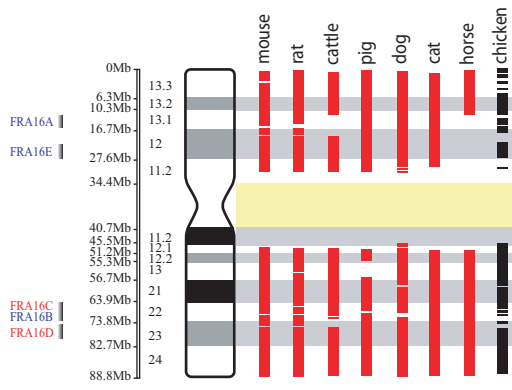
HSA 13



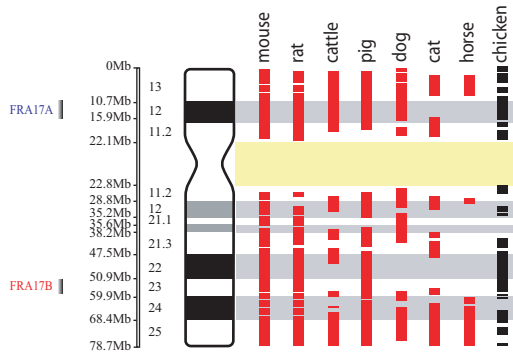
HSA 14



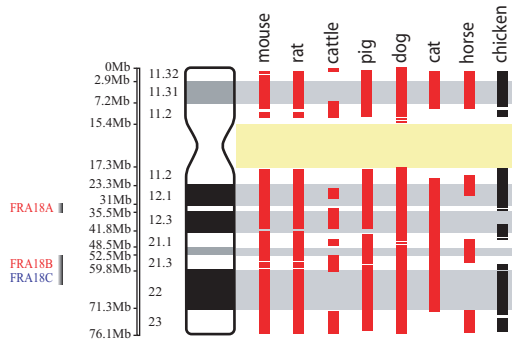
HSA 15



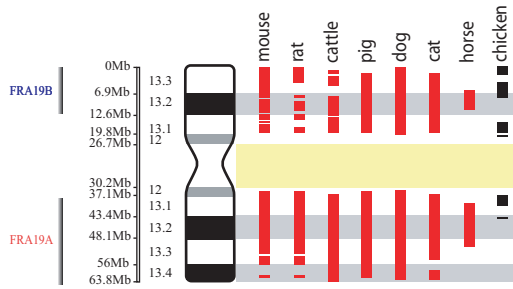
HSA 16



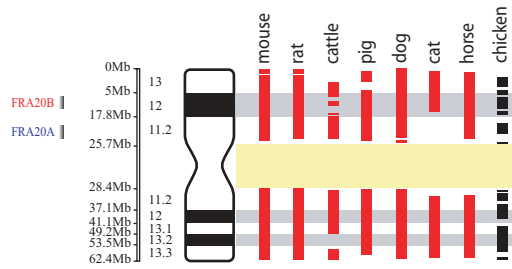
HSA 17



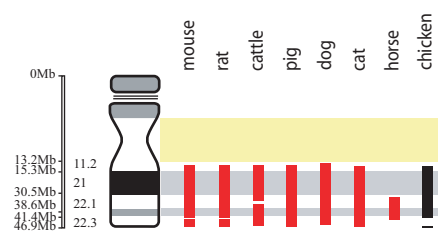
HSA 18



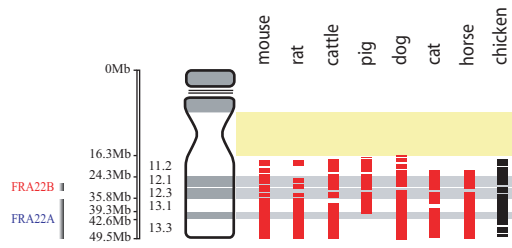
HSA 19



HSA 20



HSA 21



HSA 22