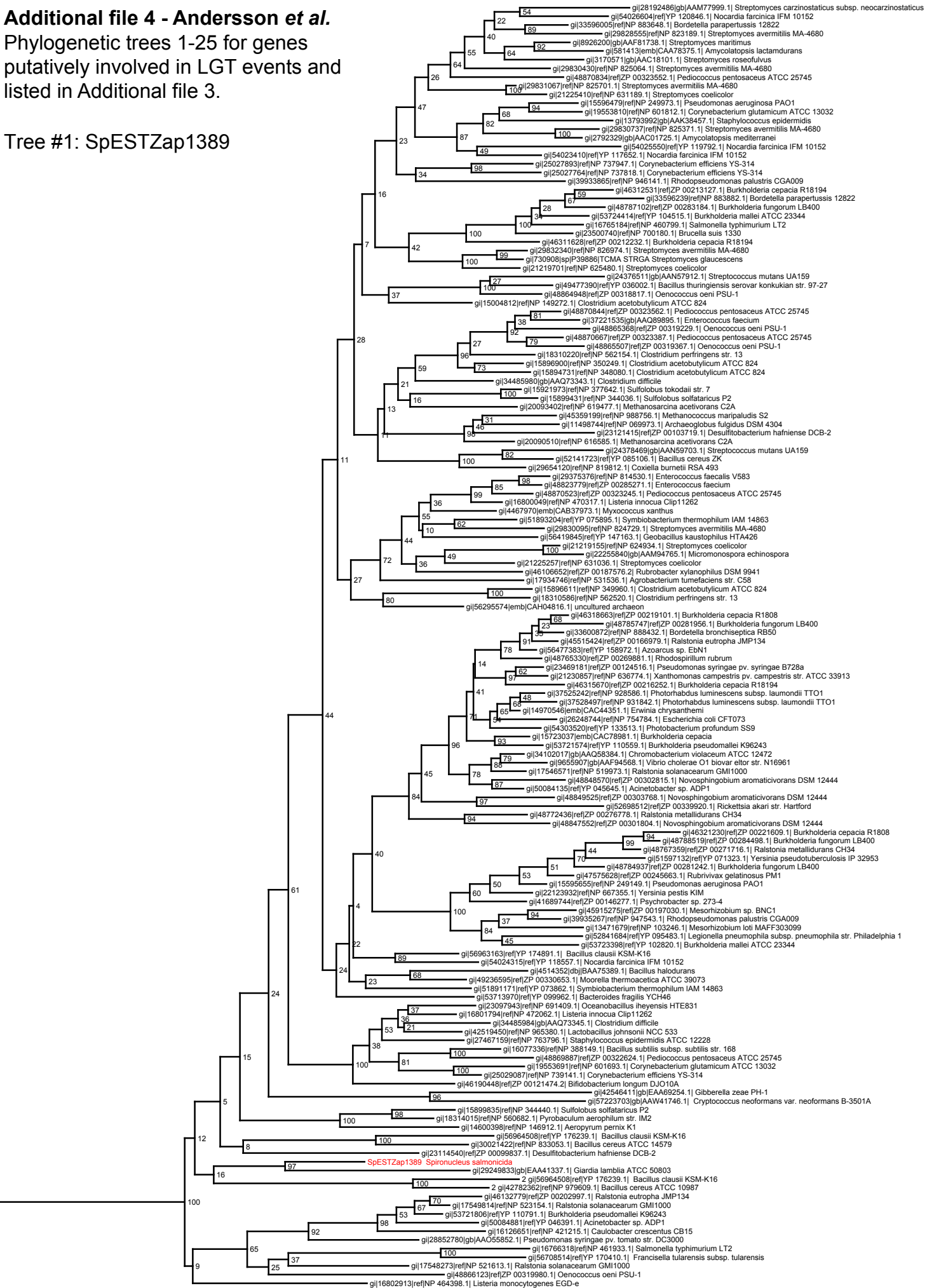


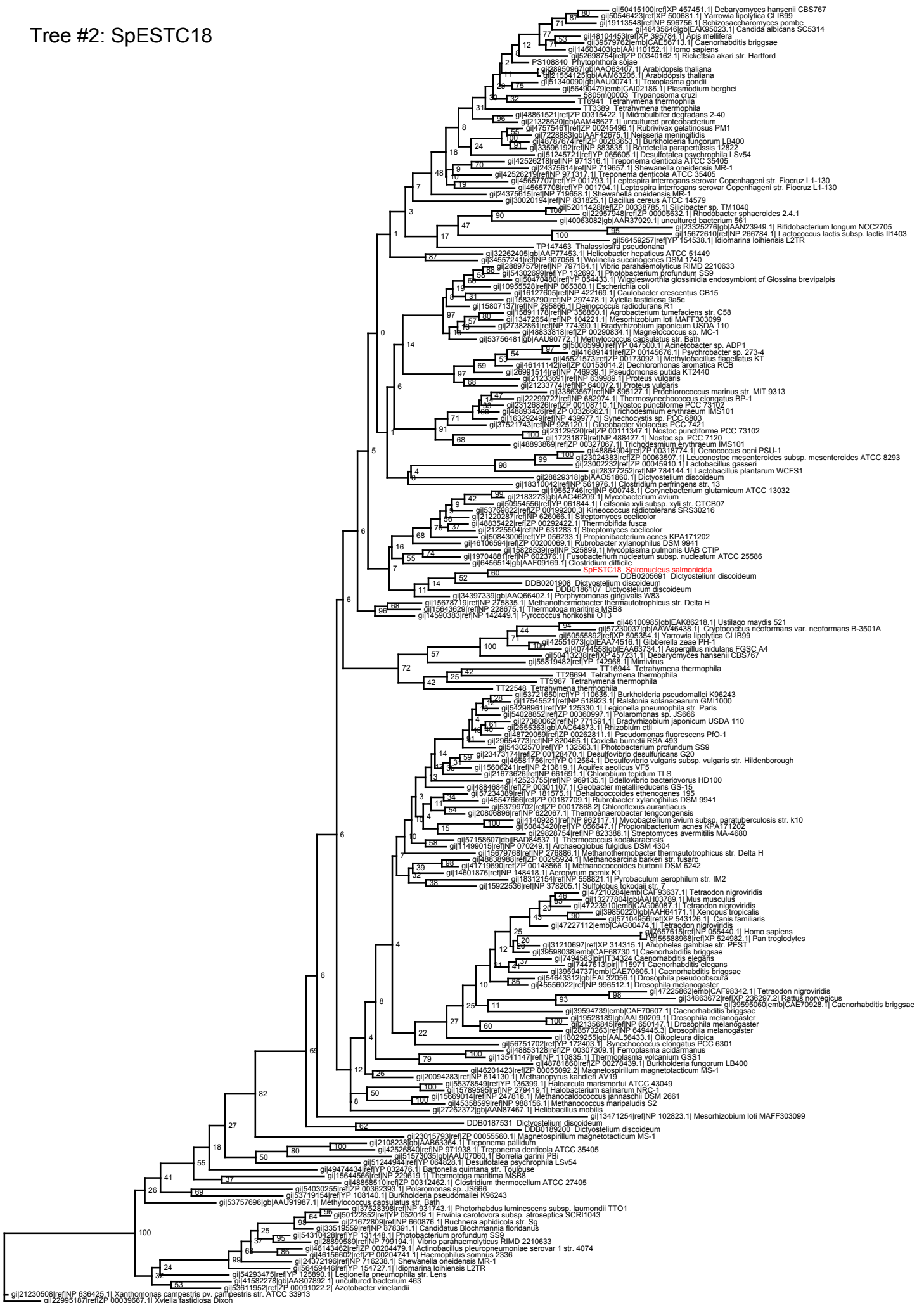
Additional file 4 - Andersson et al.

Phylogenetic trees 1-25 for genes putatively involved in LGT events and listed in Additional file 3.

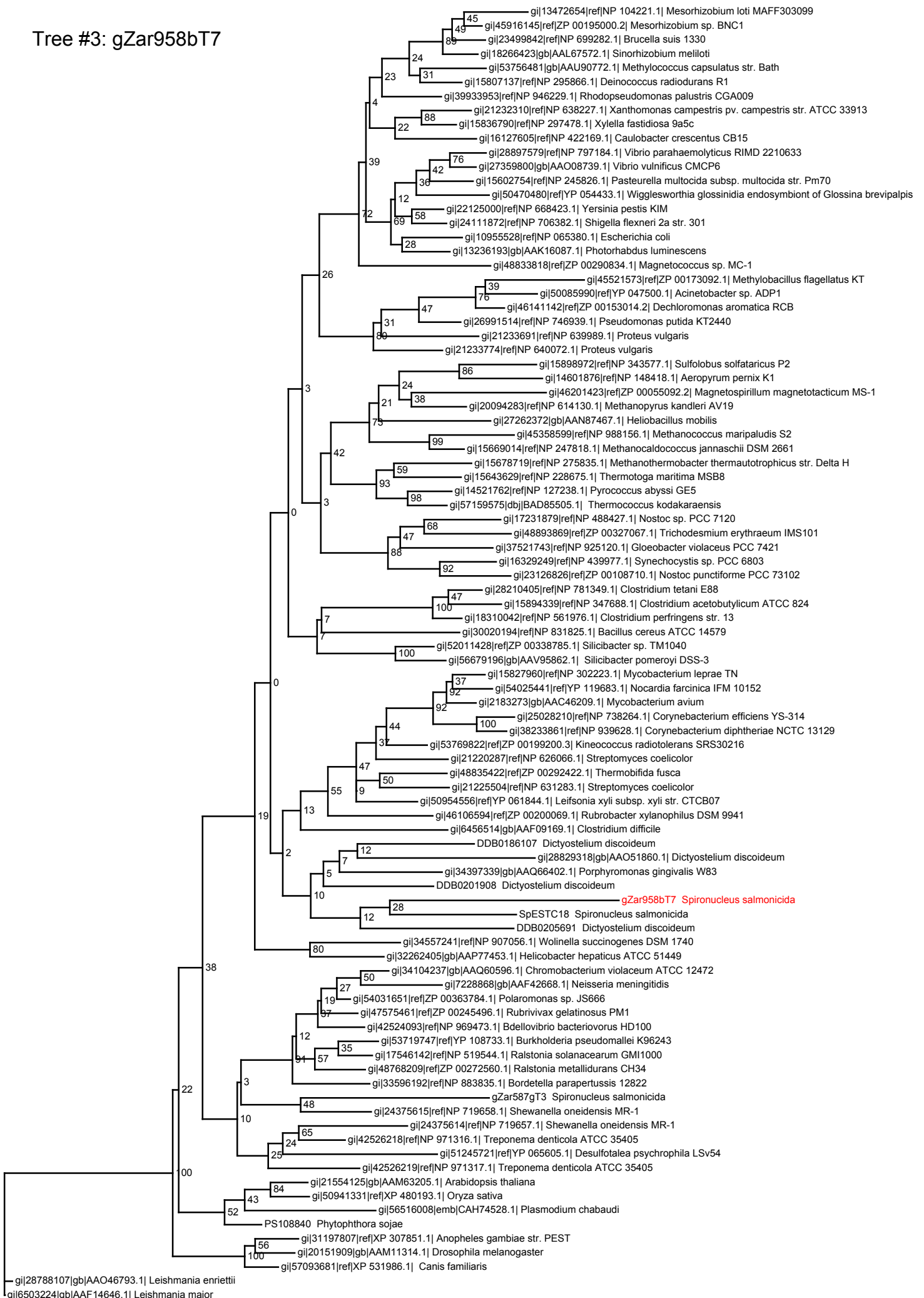
Tree #1: SpESTZap1389



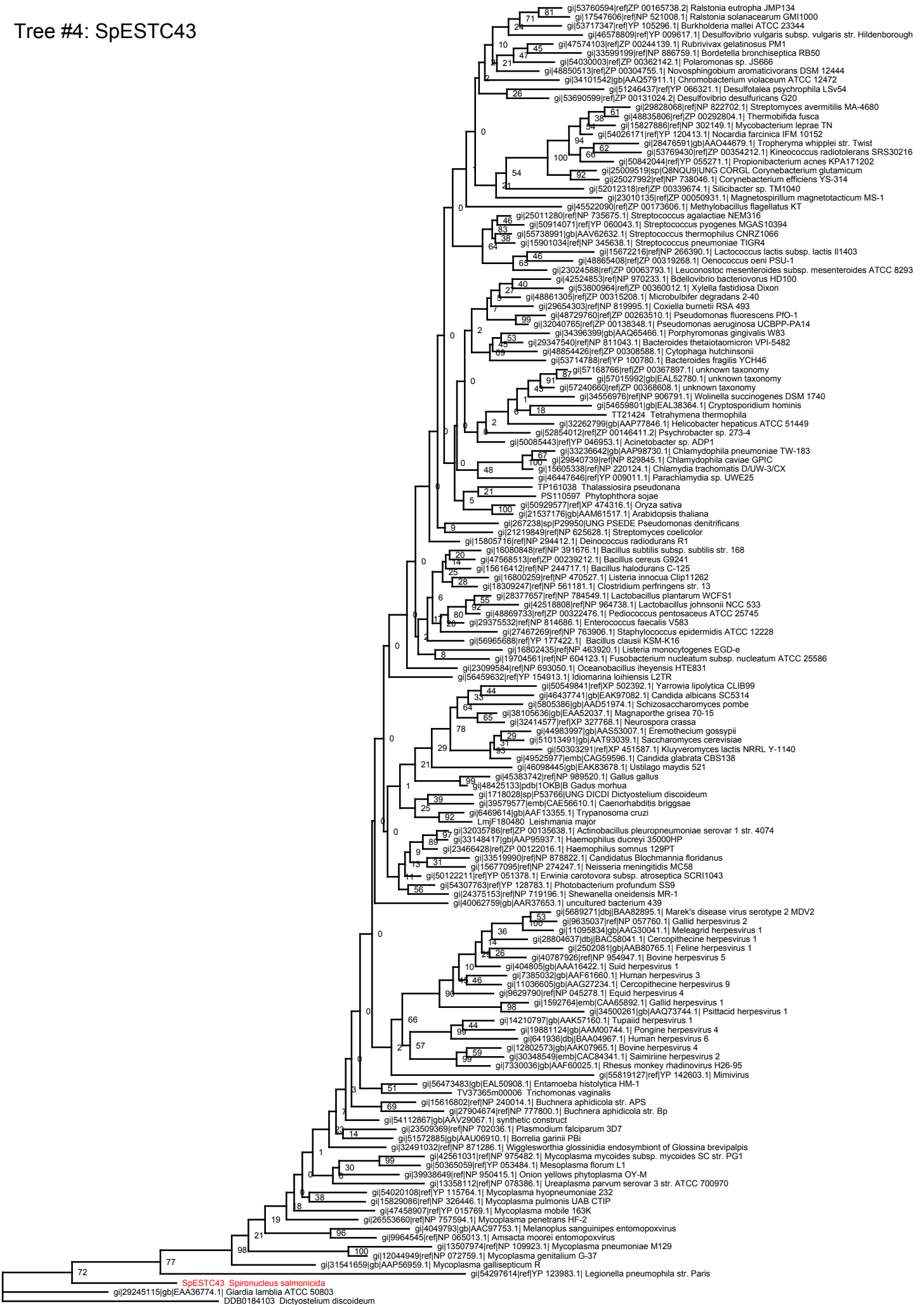
Tree #2: SpESTC18



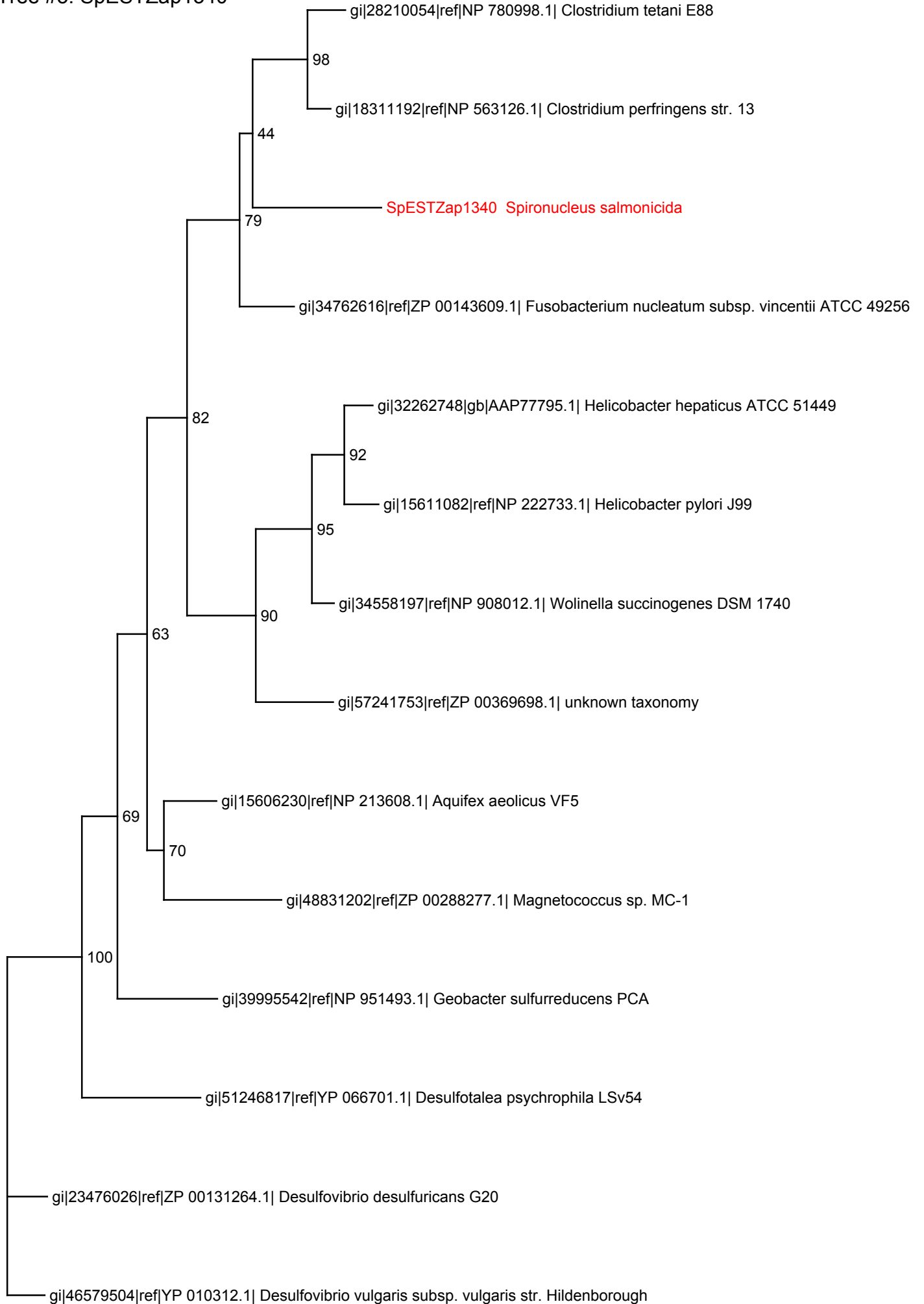
Tree #3: gZar958bT7



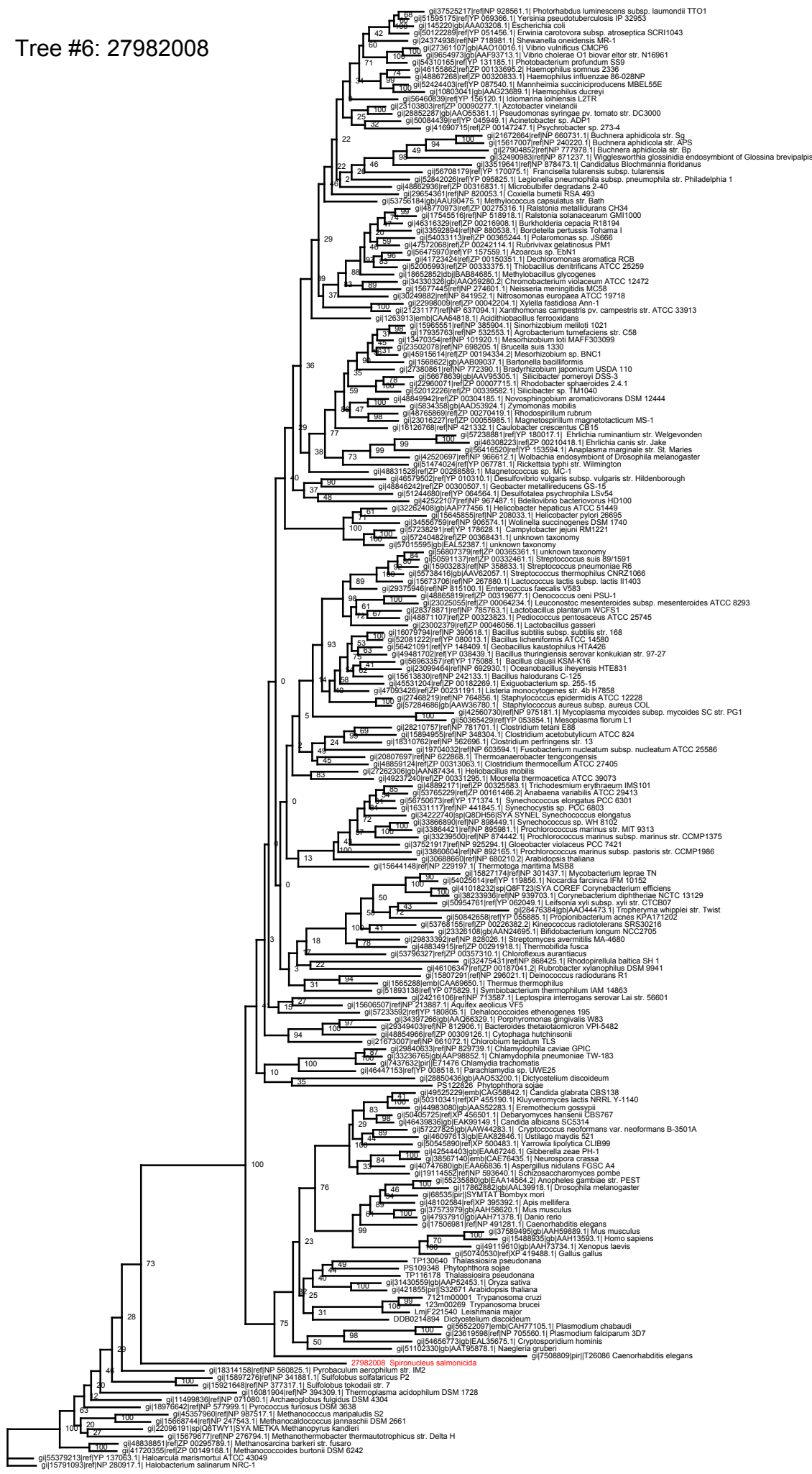
Tree #4: SpESTC43



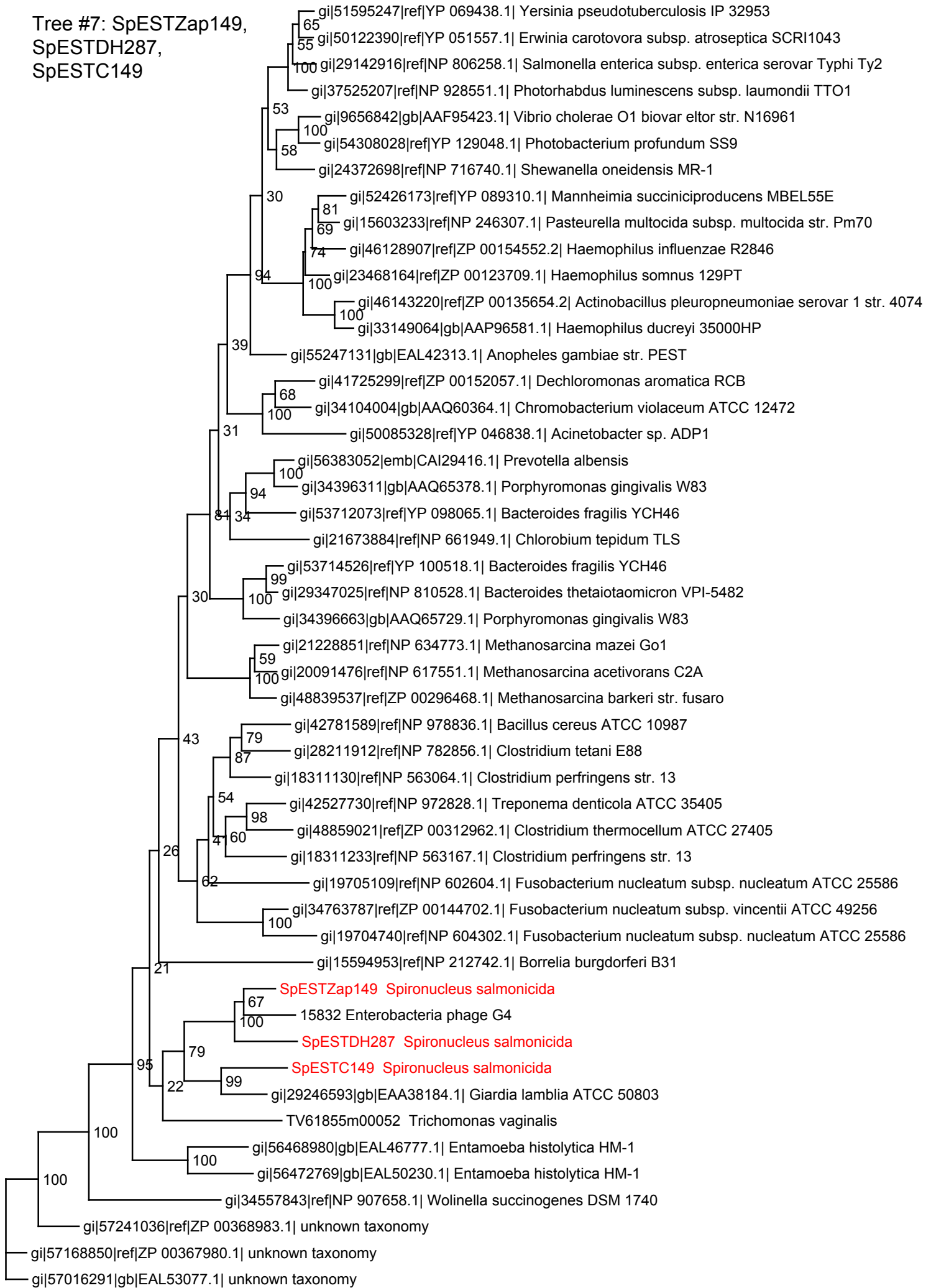
Tree #5: SpESTZap1340



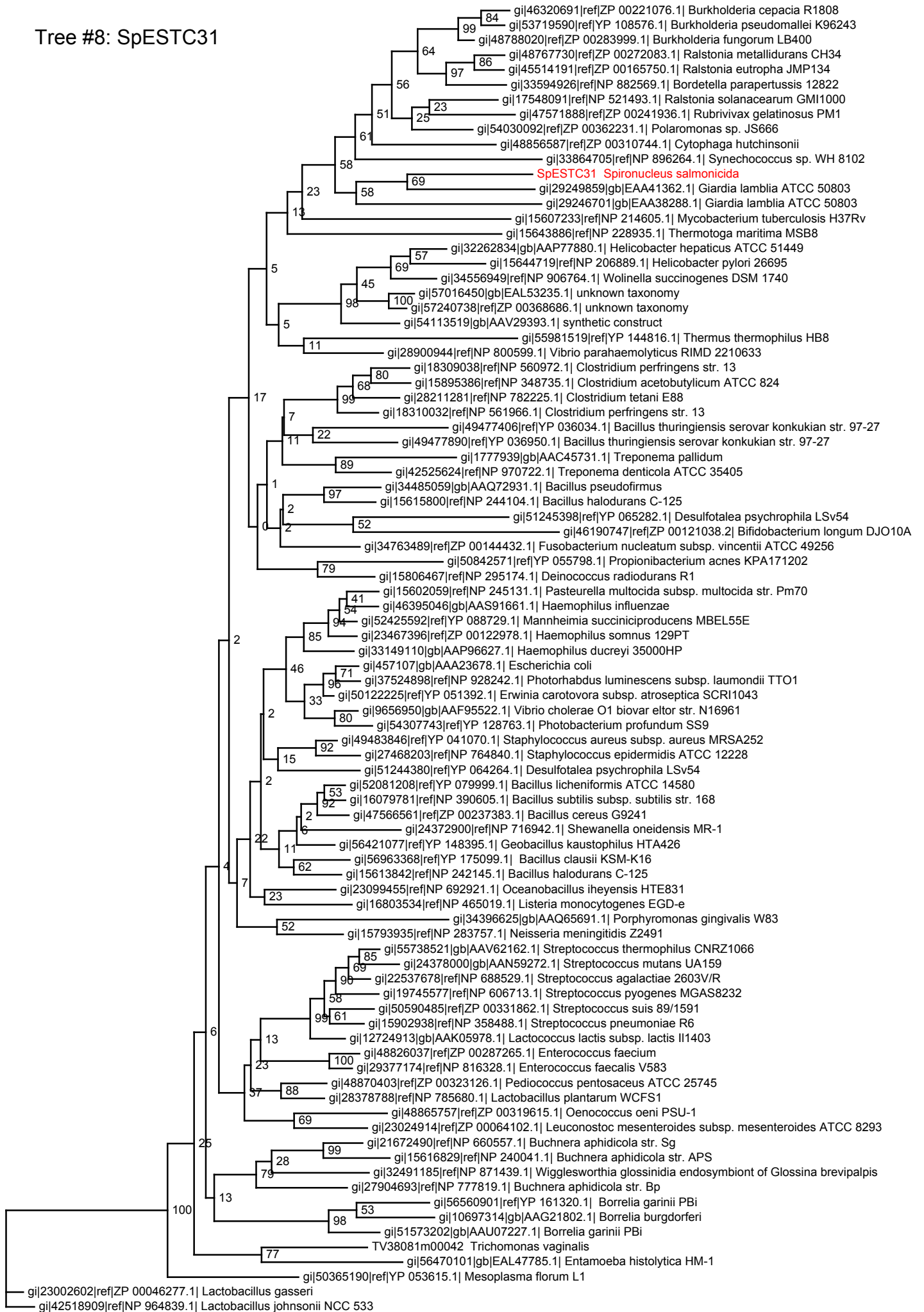
Tree #: 27982008



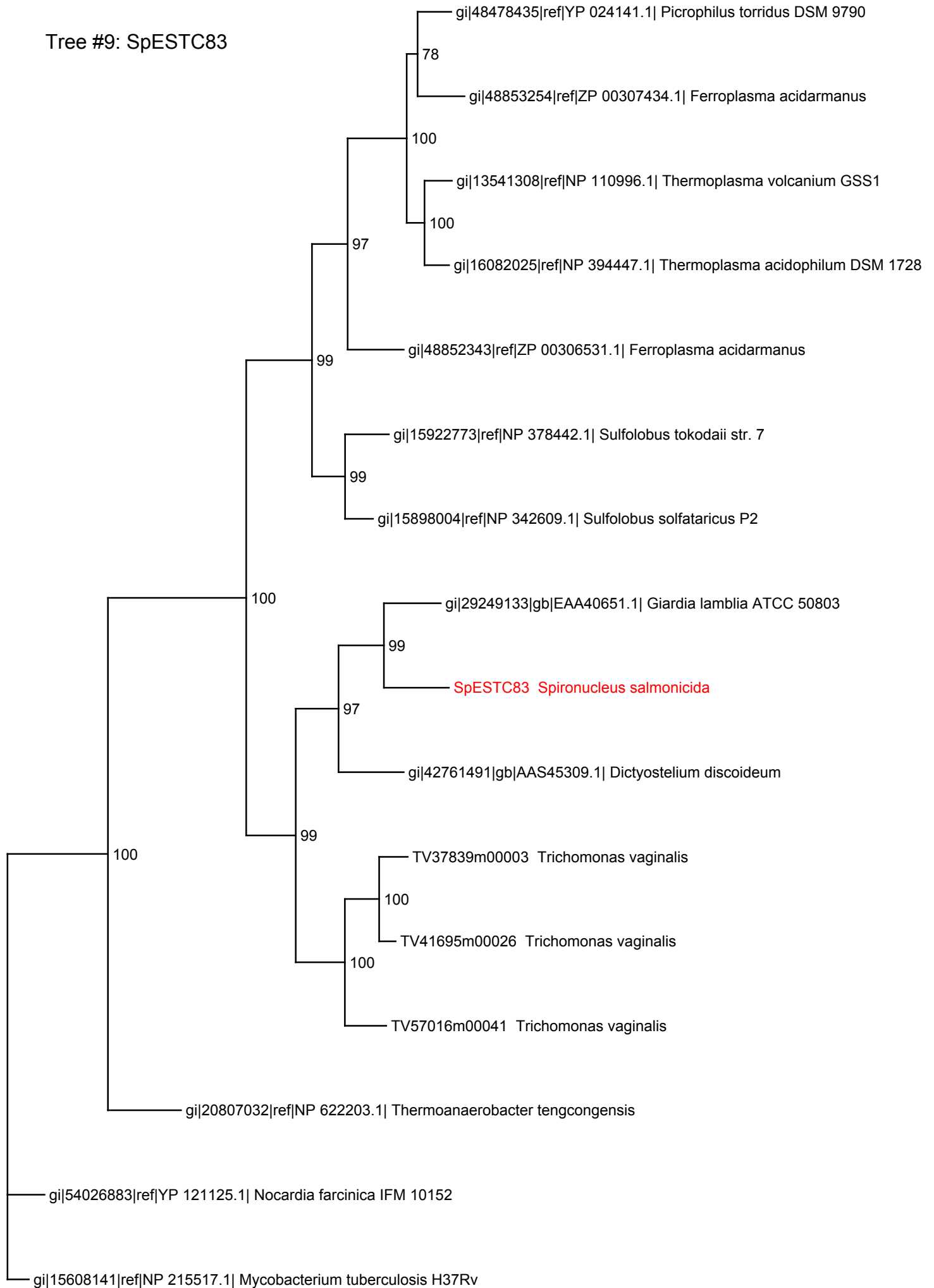
Tree #7: SpESTZap149,
SpESTDH287,
SpESTC149



Tree #8: SpESTC31



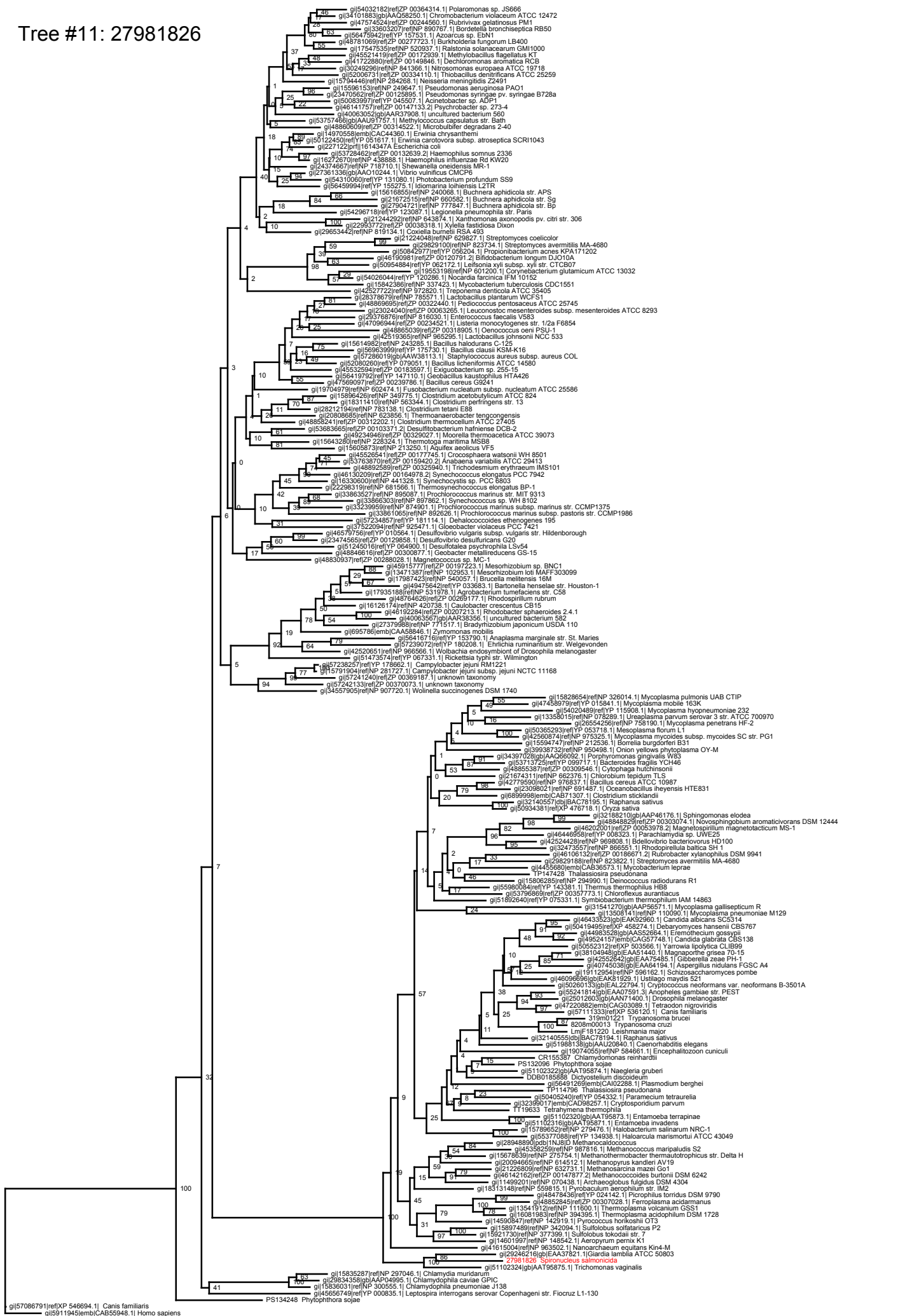
Tree #9: SpESTC83



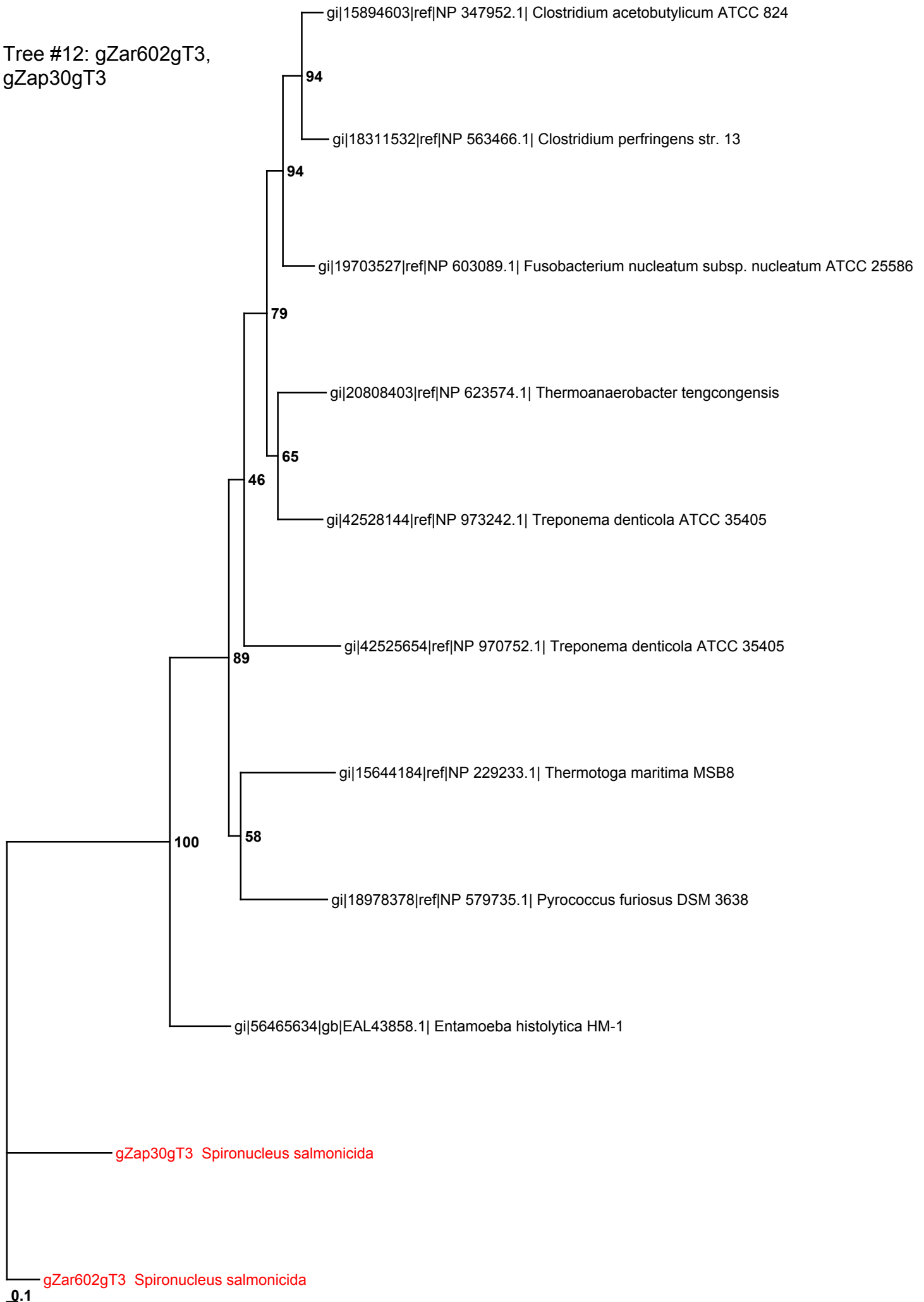
Tree #10: SpESTC221



Tree #11: 27981826



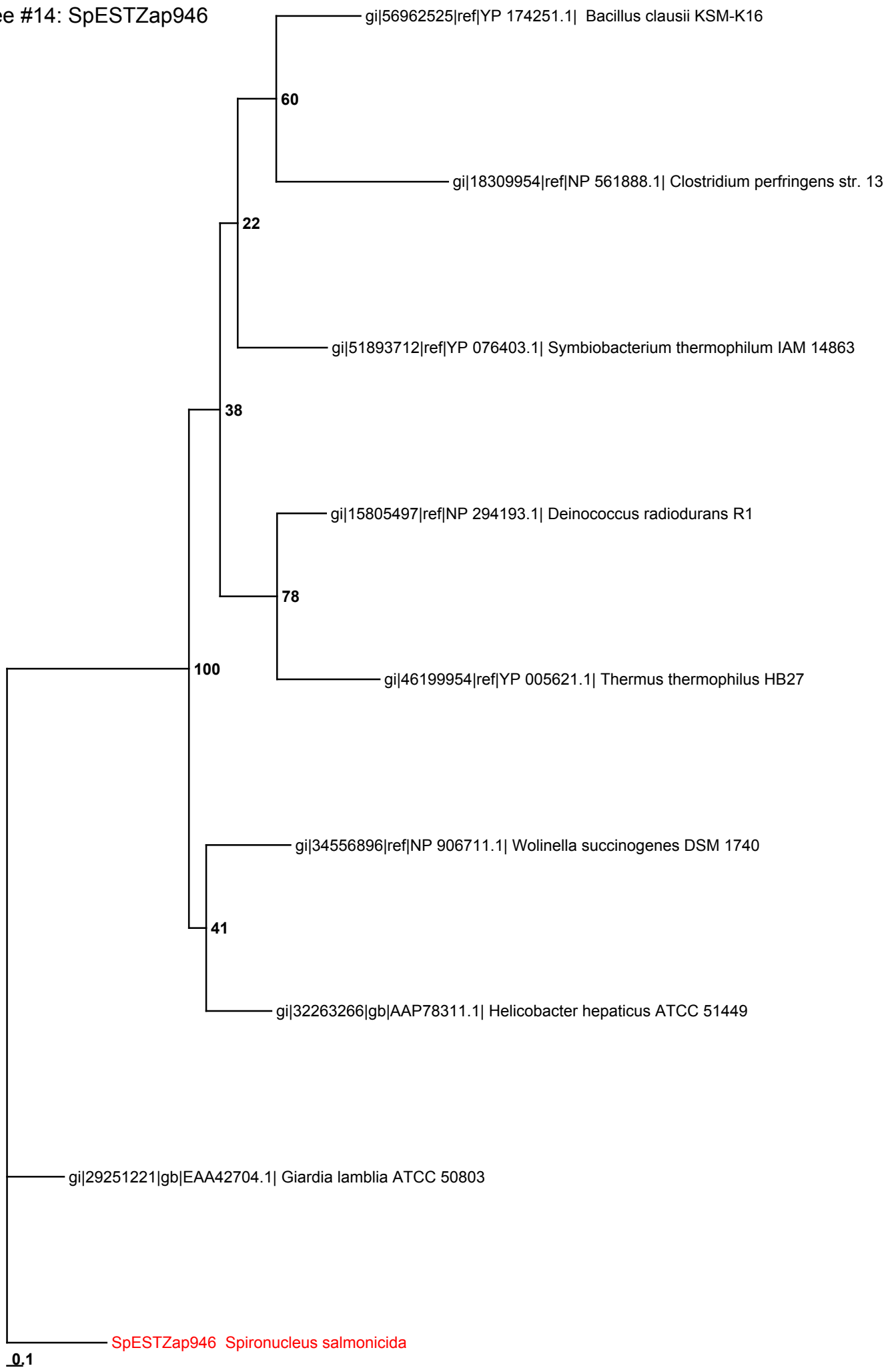
Tree #12: gZar602gT3,
gZap30gT3



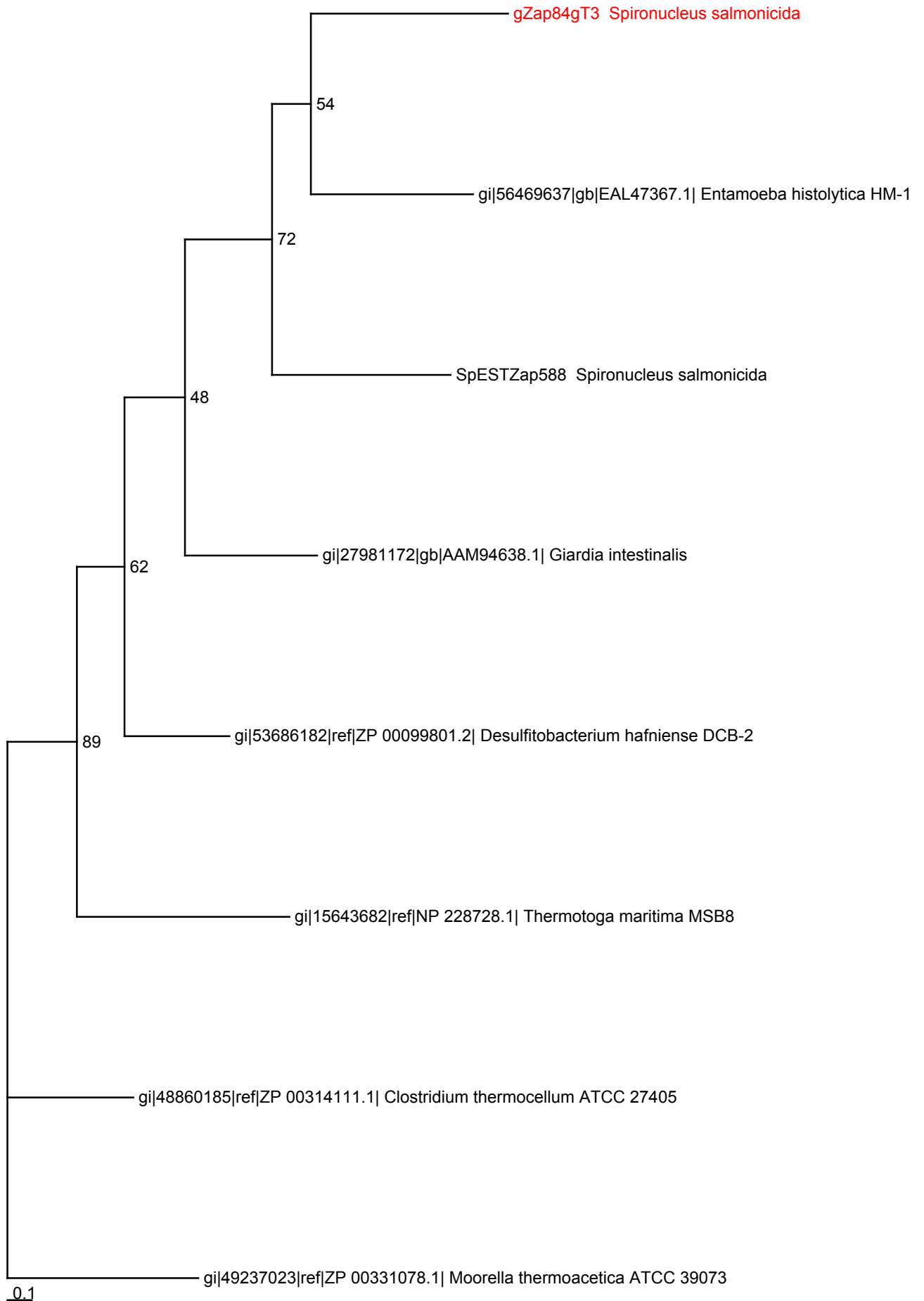
Tree #13: 27982357



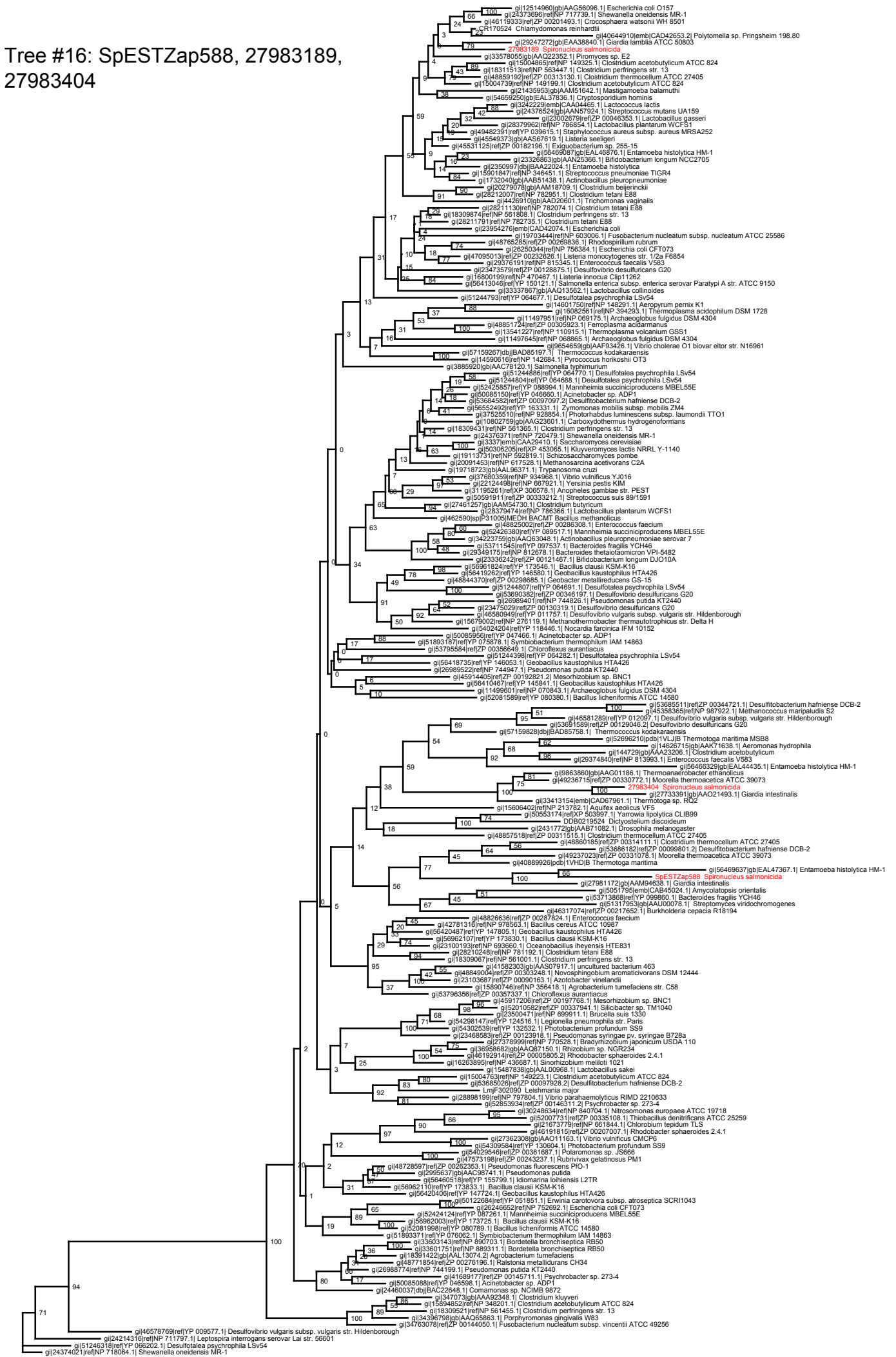
Tree #14: SpESTZap946



Tree #15: gZap84gT3



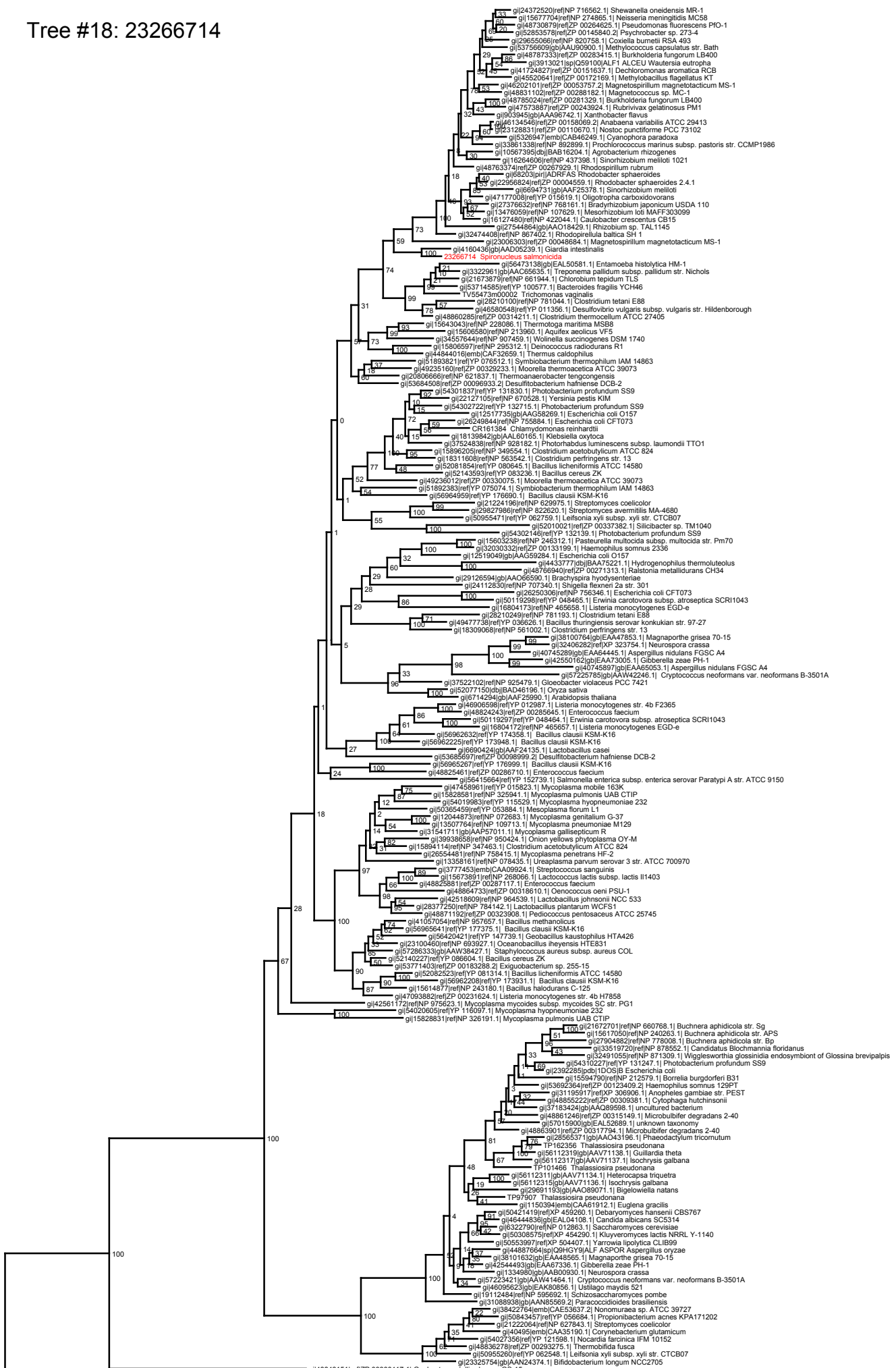
Tree #16: SpESTzap588, 27983189, 27983404



Tree 17: SpESTD325

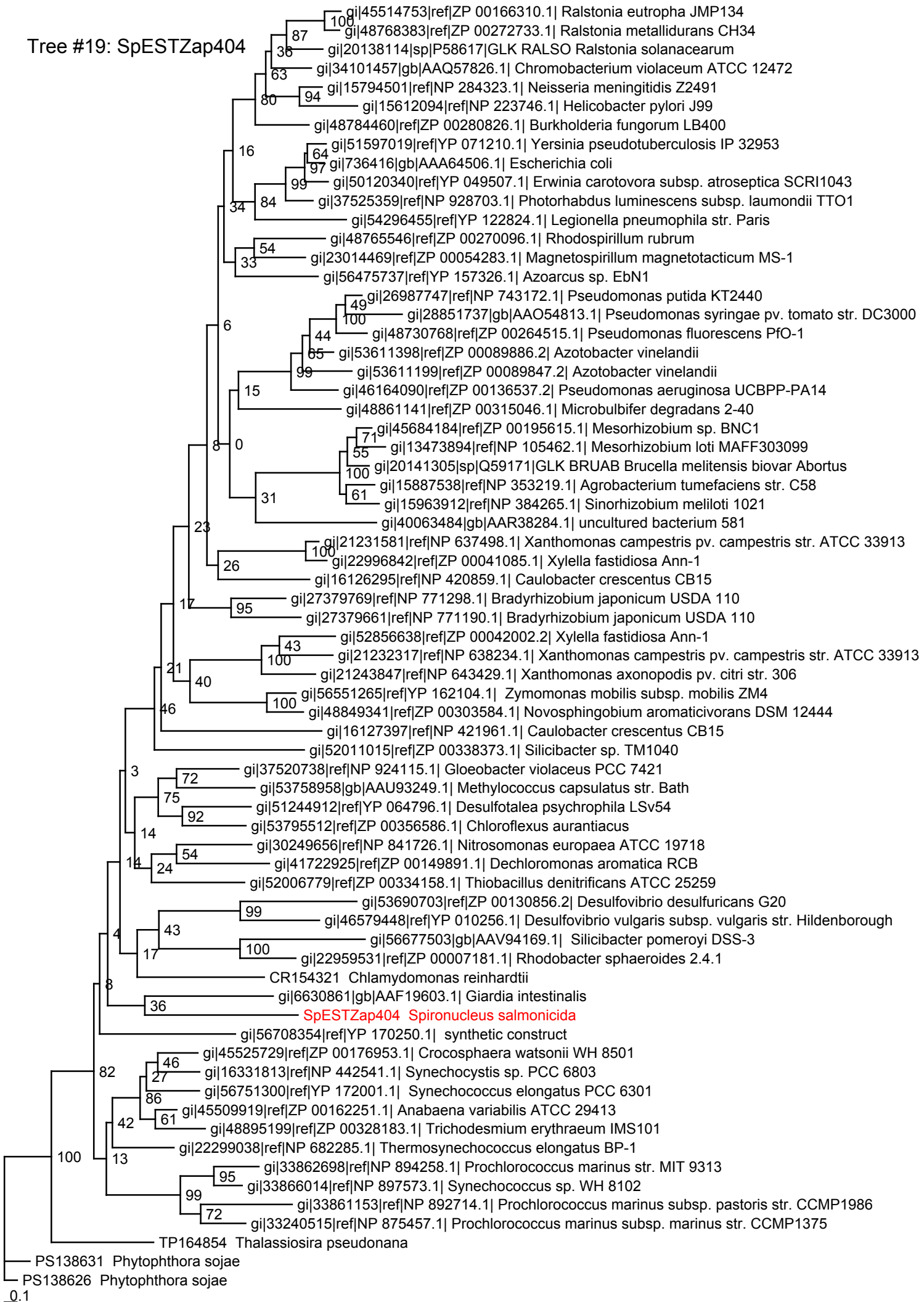


Tree #18: 23266714



gi48844085|ref|ZP_00298422.1| Geobacter metallireducens GS-15
gi5246569|ref|YF_066453.1| Desulfotalea psychrophila L5v54

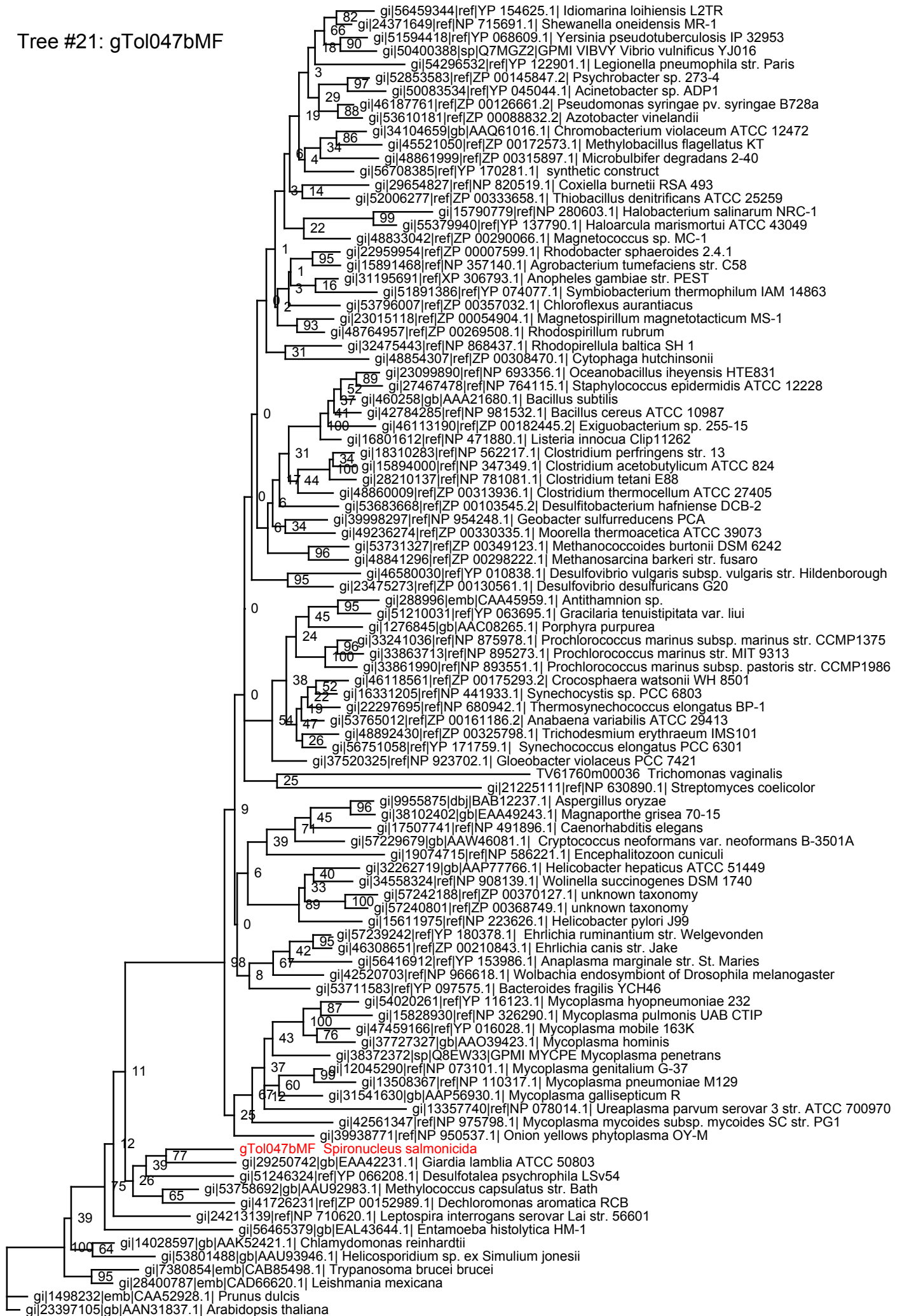
Tree #19: SpESTZap404



Tree #20: 18030018



Tree #21: gTol047bMF



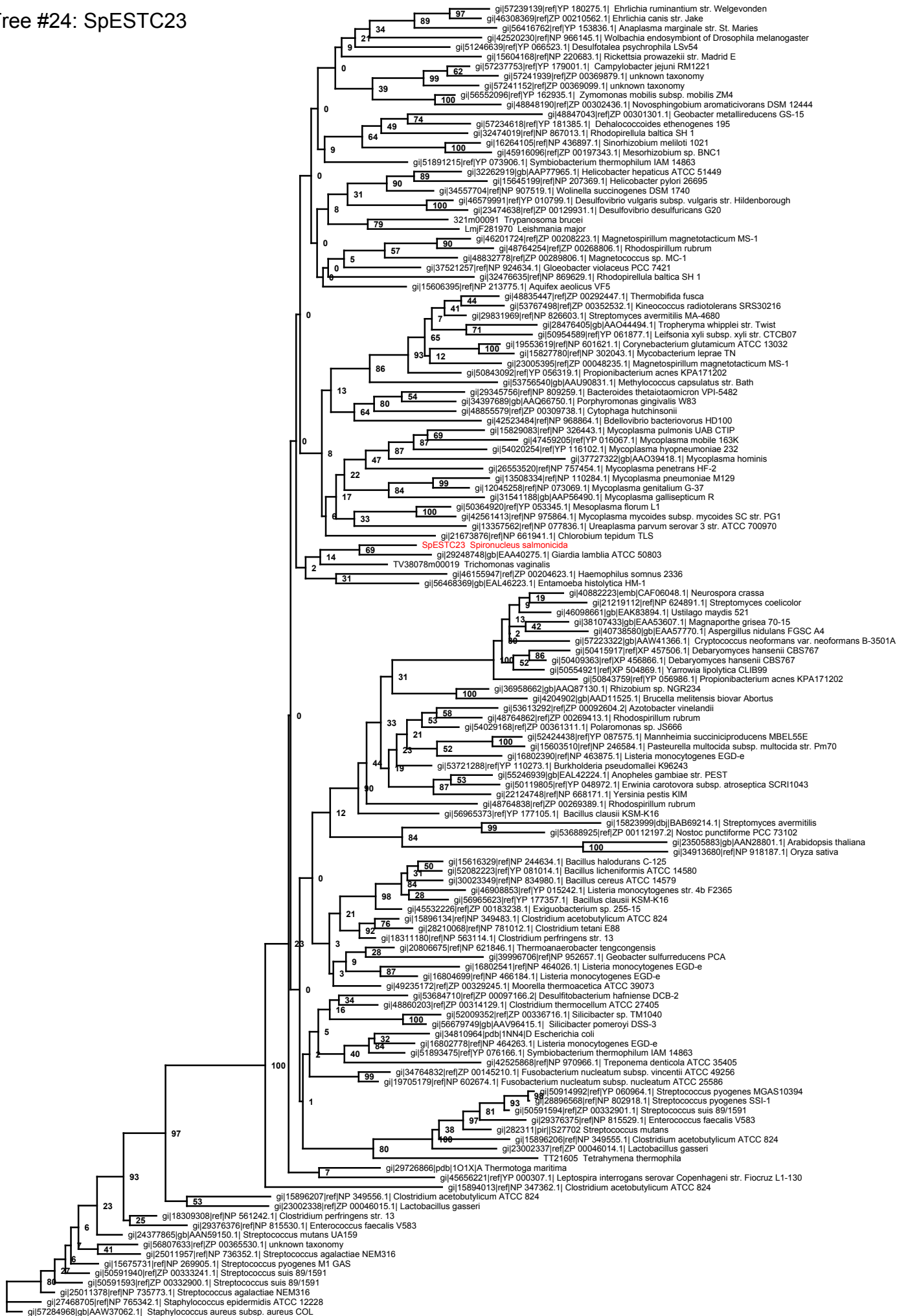
Tree #22: SpESTC275



Tree #23: gTor983gT3



Tree #24: SpESTC23



Tree #25: SpESTZap360

