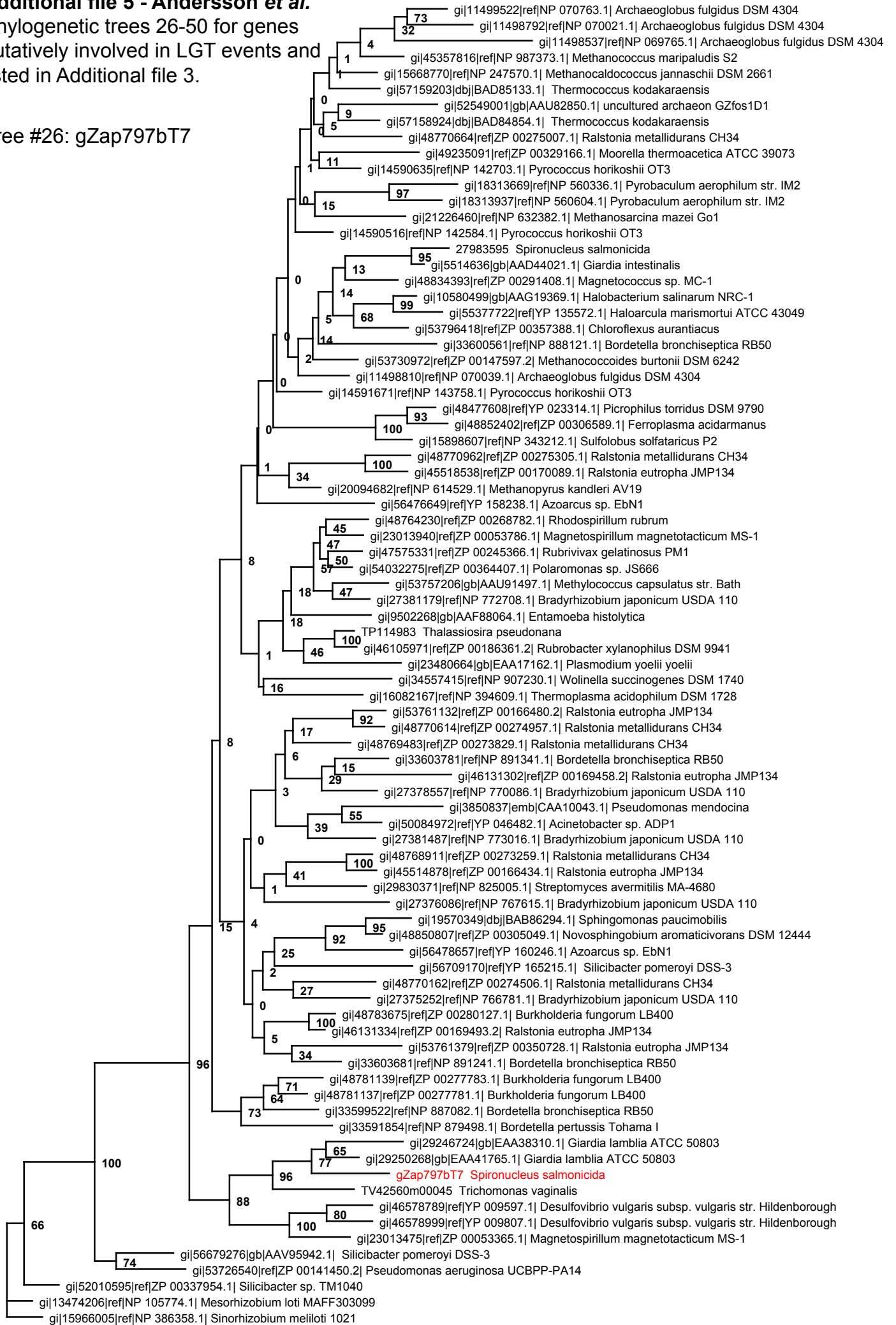


Additional file 5 - Andersson et al.

Phylogenetic trees 26-50 for genes putatively involved in LGT events and listed in Additional file 3.

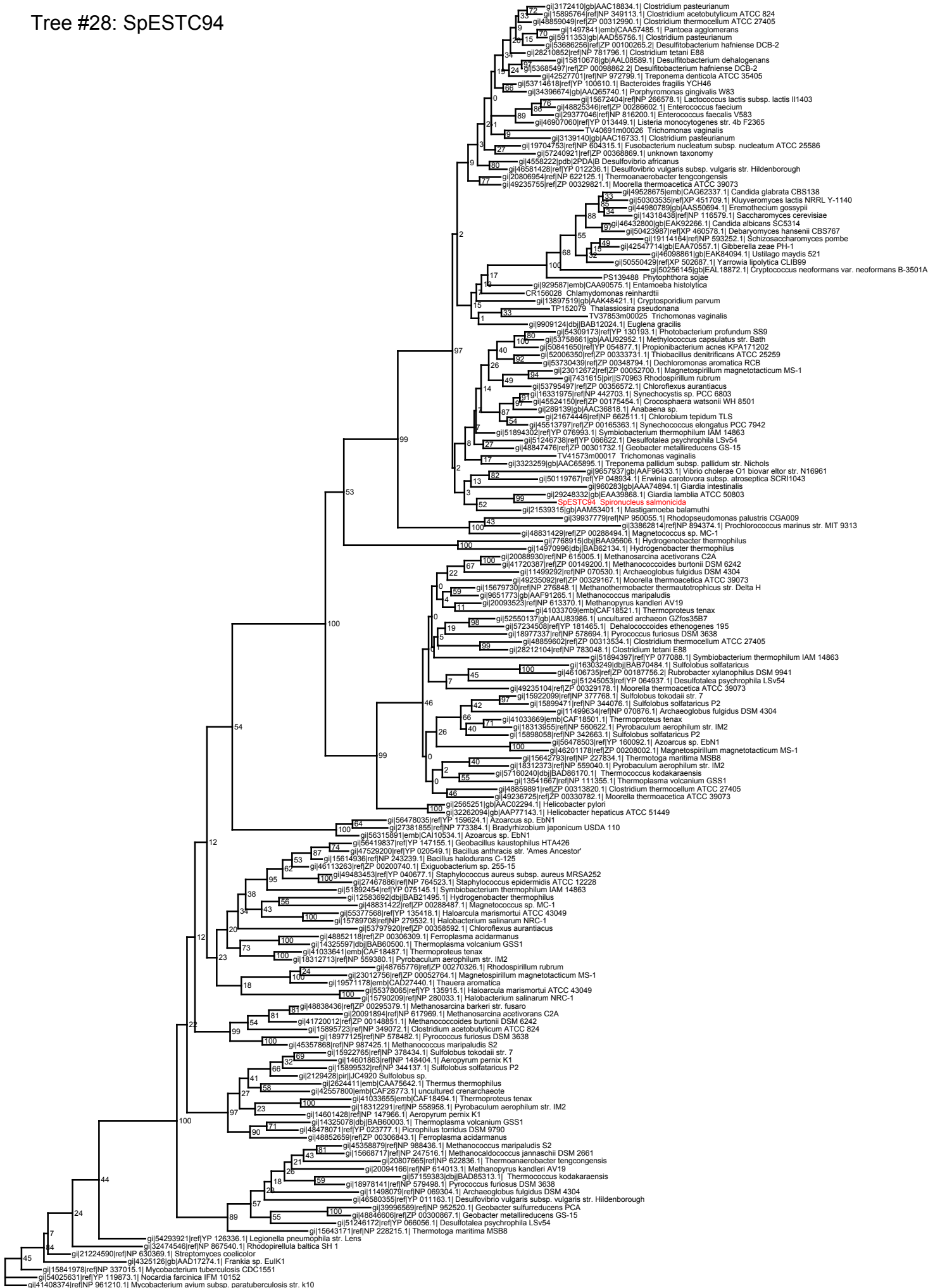
Tree #26: gZap797bT7



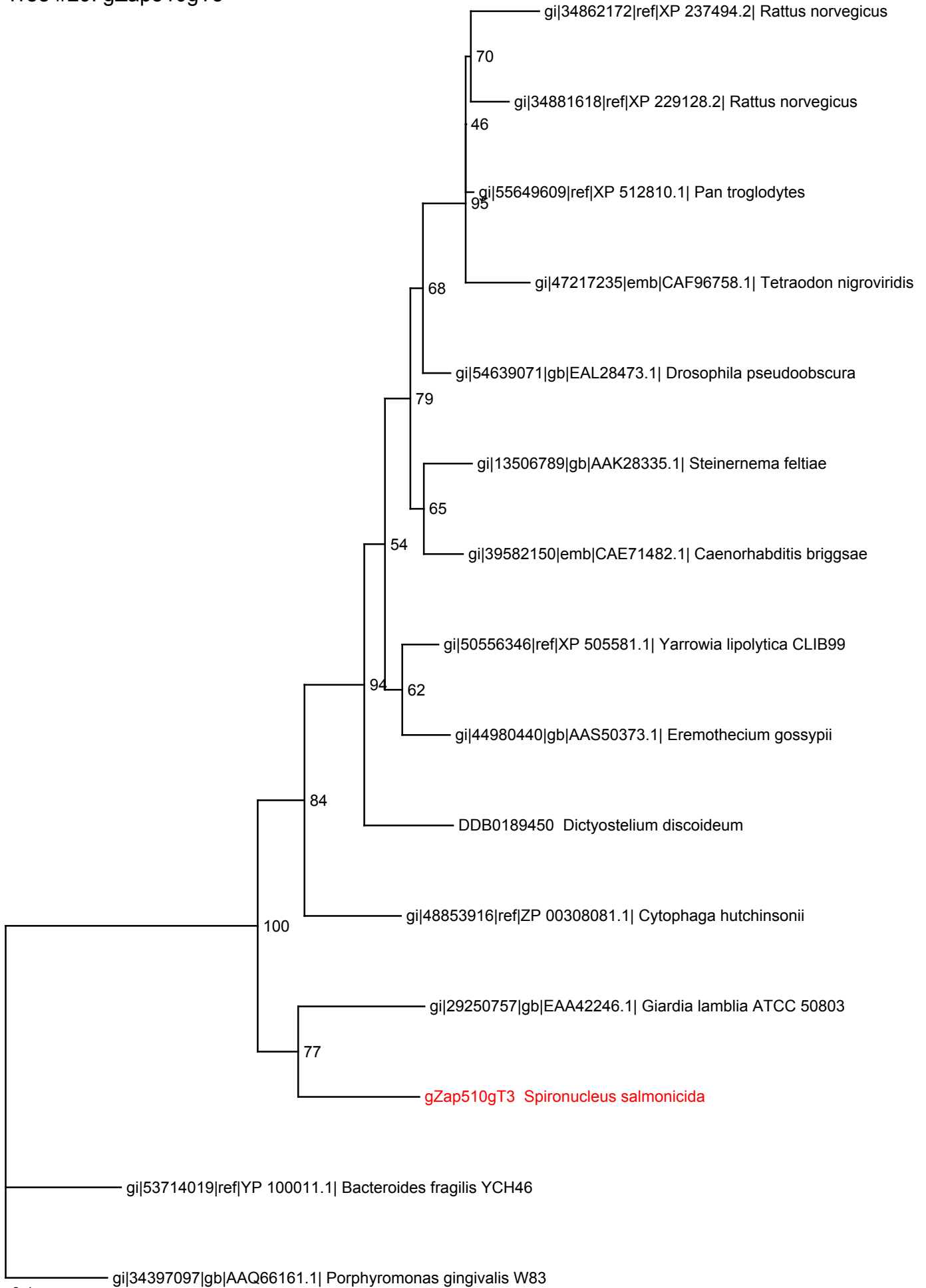
Tree #27: gZap472bT7, SpESTZap1028



Tree #28: SpESTC94



Tree #29: gZap510gT3

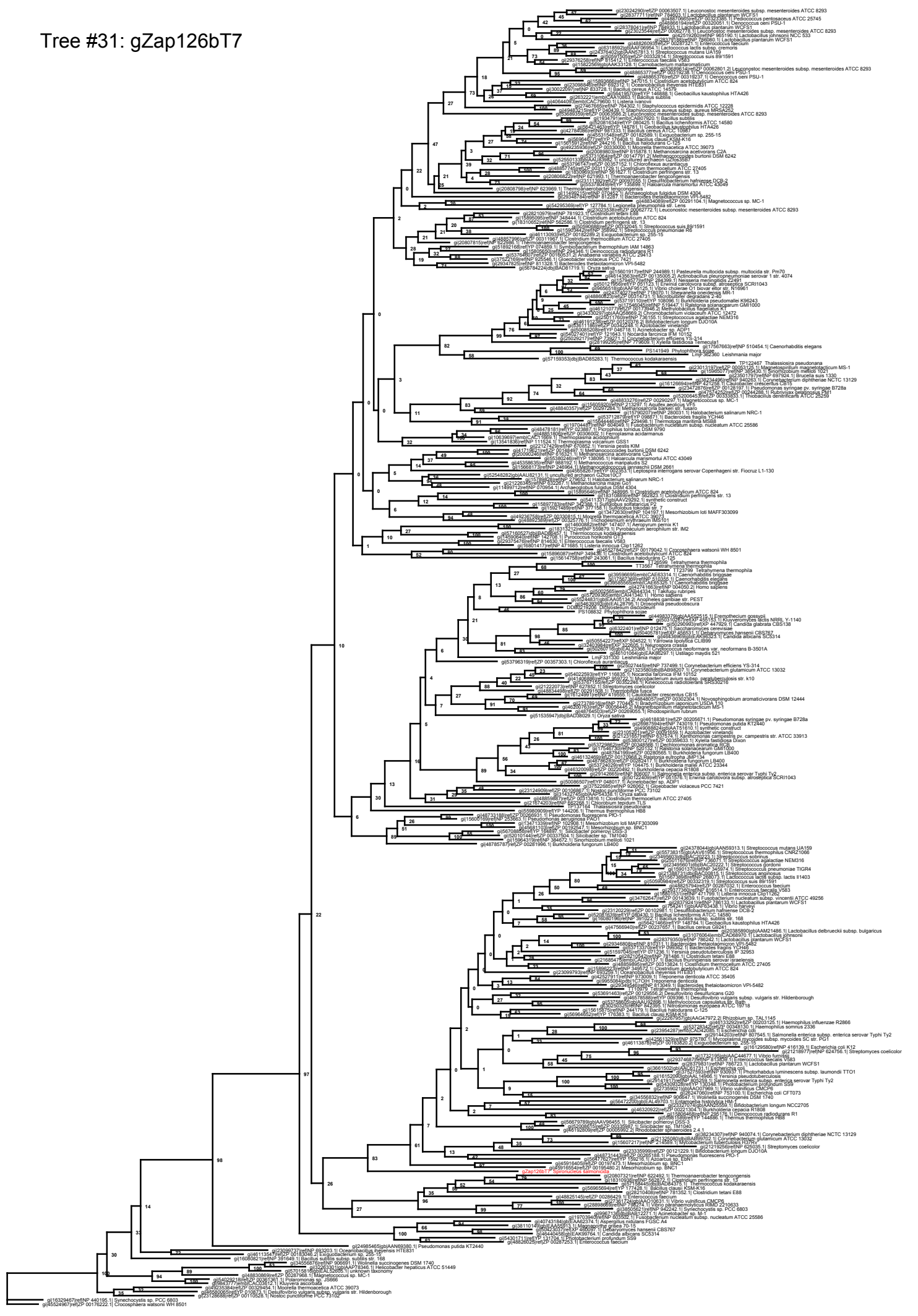


0.1

Tree #30: SpESTC239



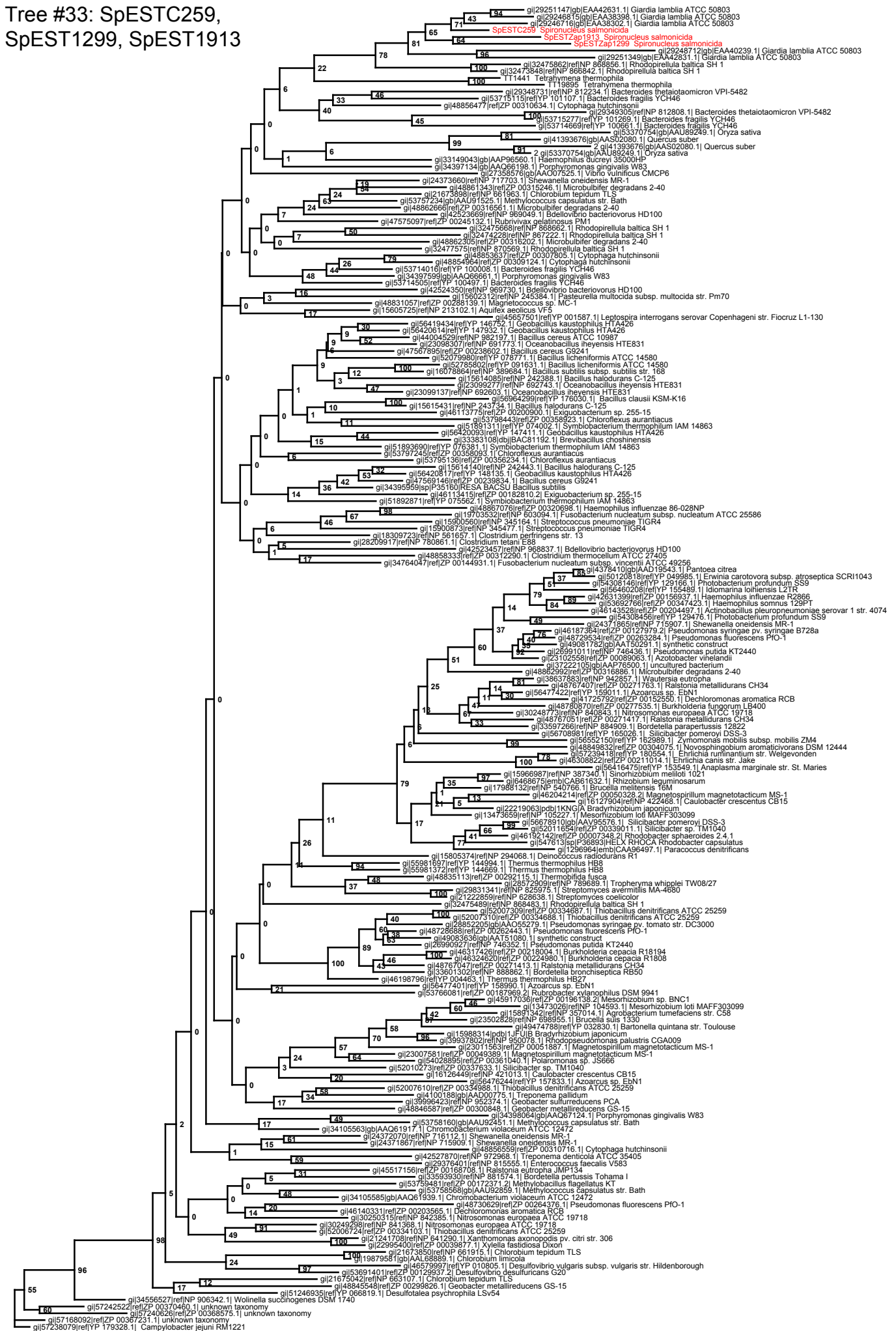
Tree #31: gZap126bT7



Tree #32: gZap126gT3



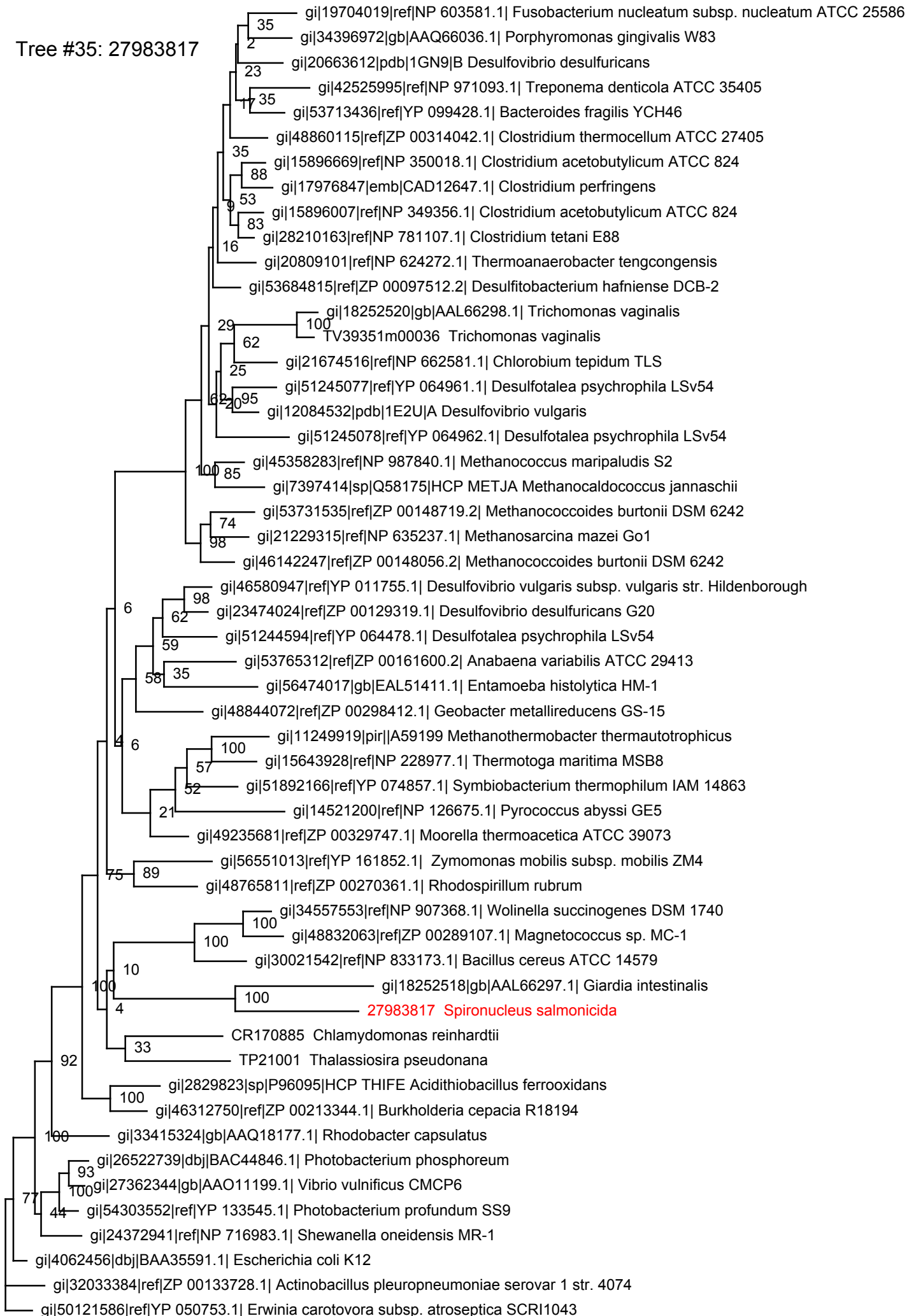
Tree #33: SpESTC259, SpEST1299, SpEST1913



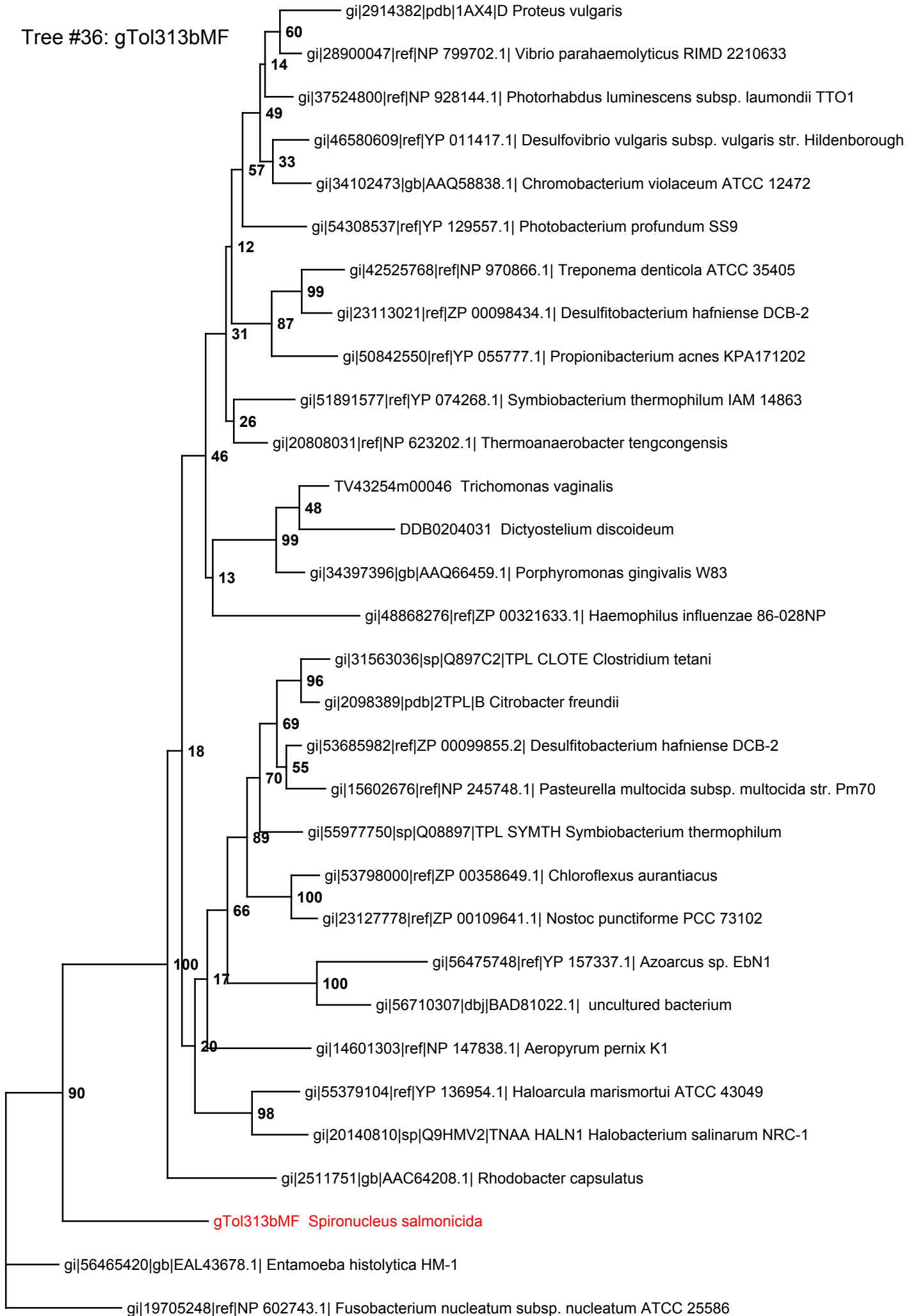
Tree #34: 20530910



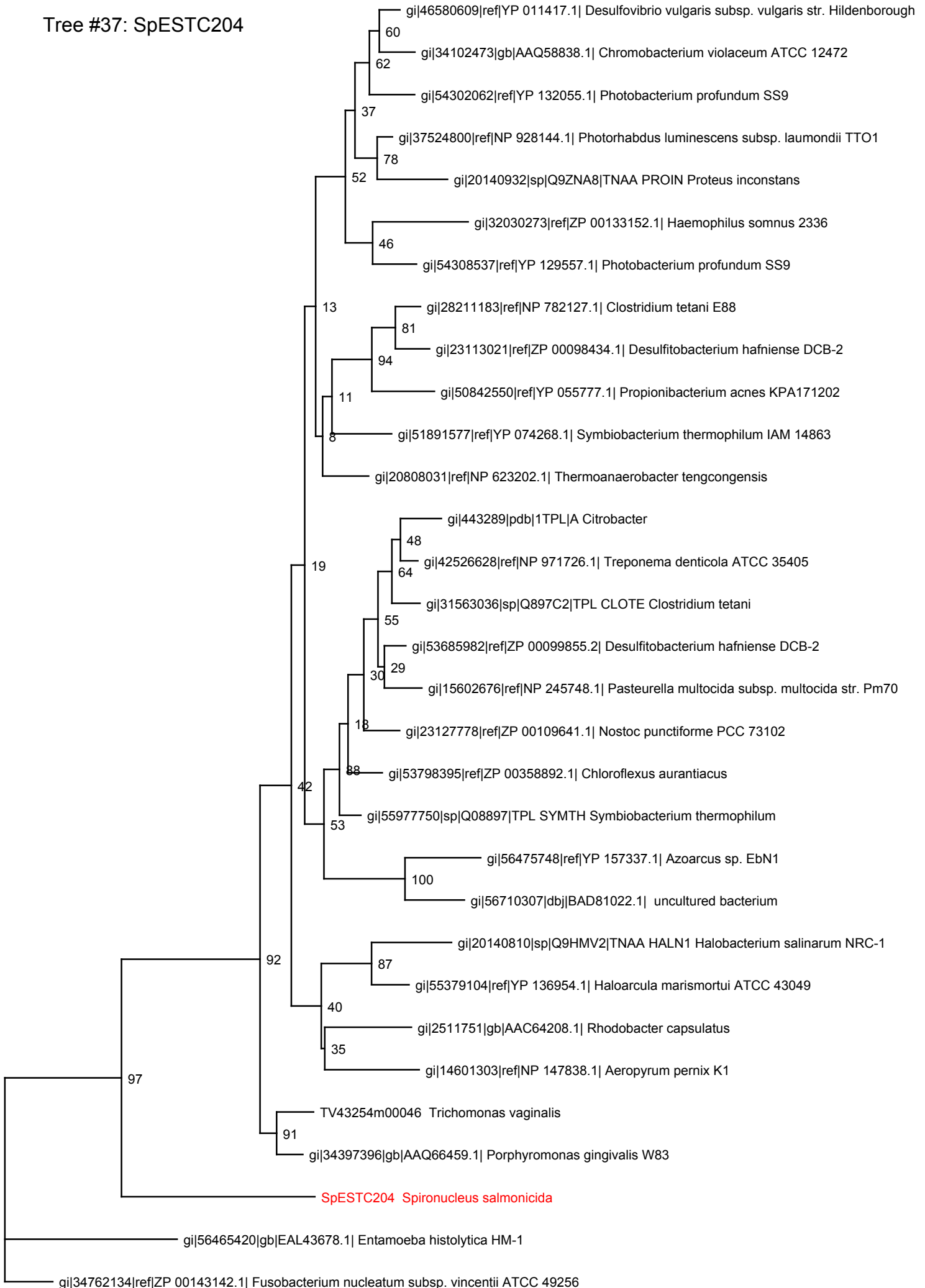
Tree #35: 27983817



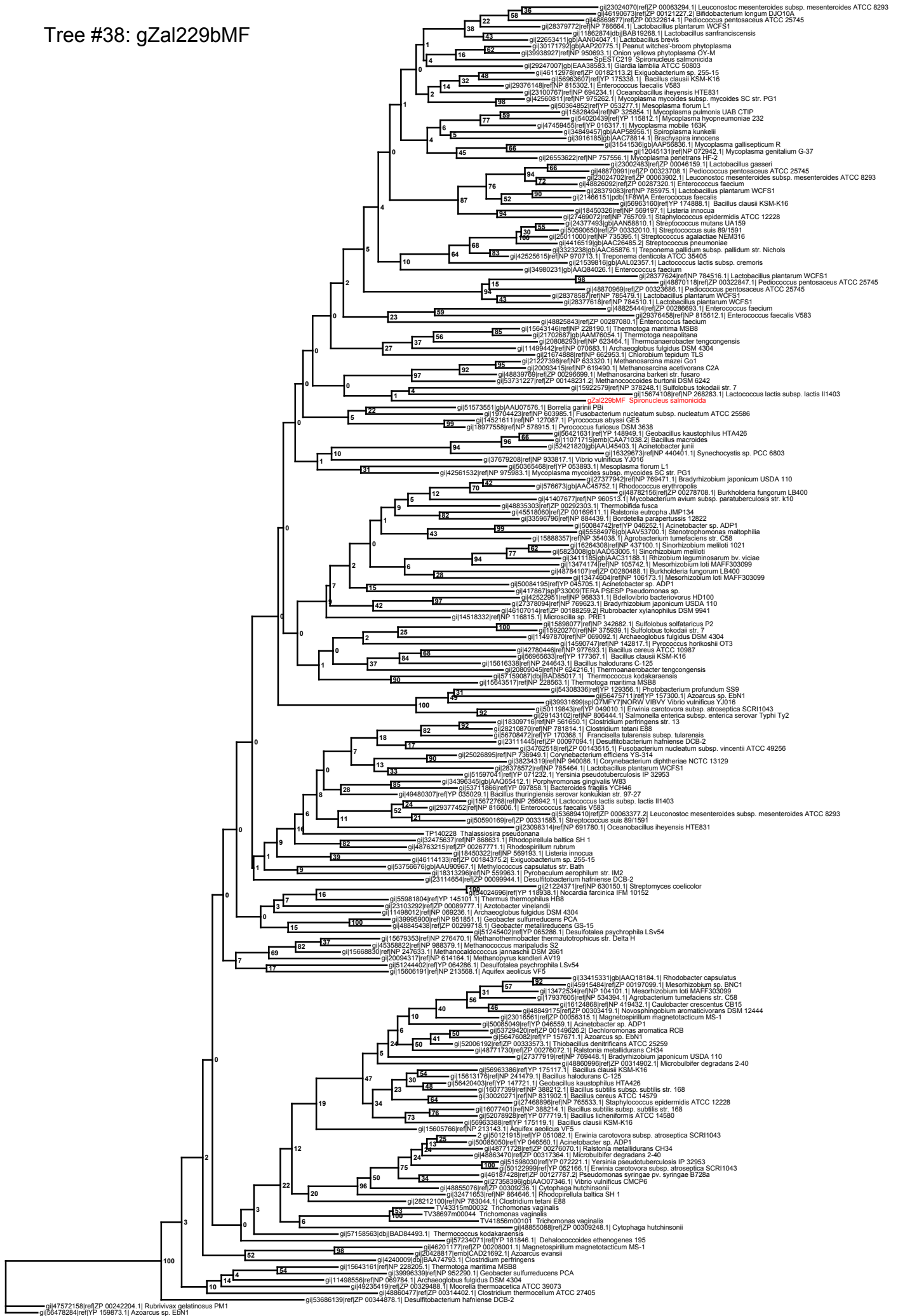
Tree #36: gTol313bMF



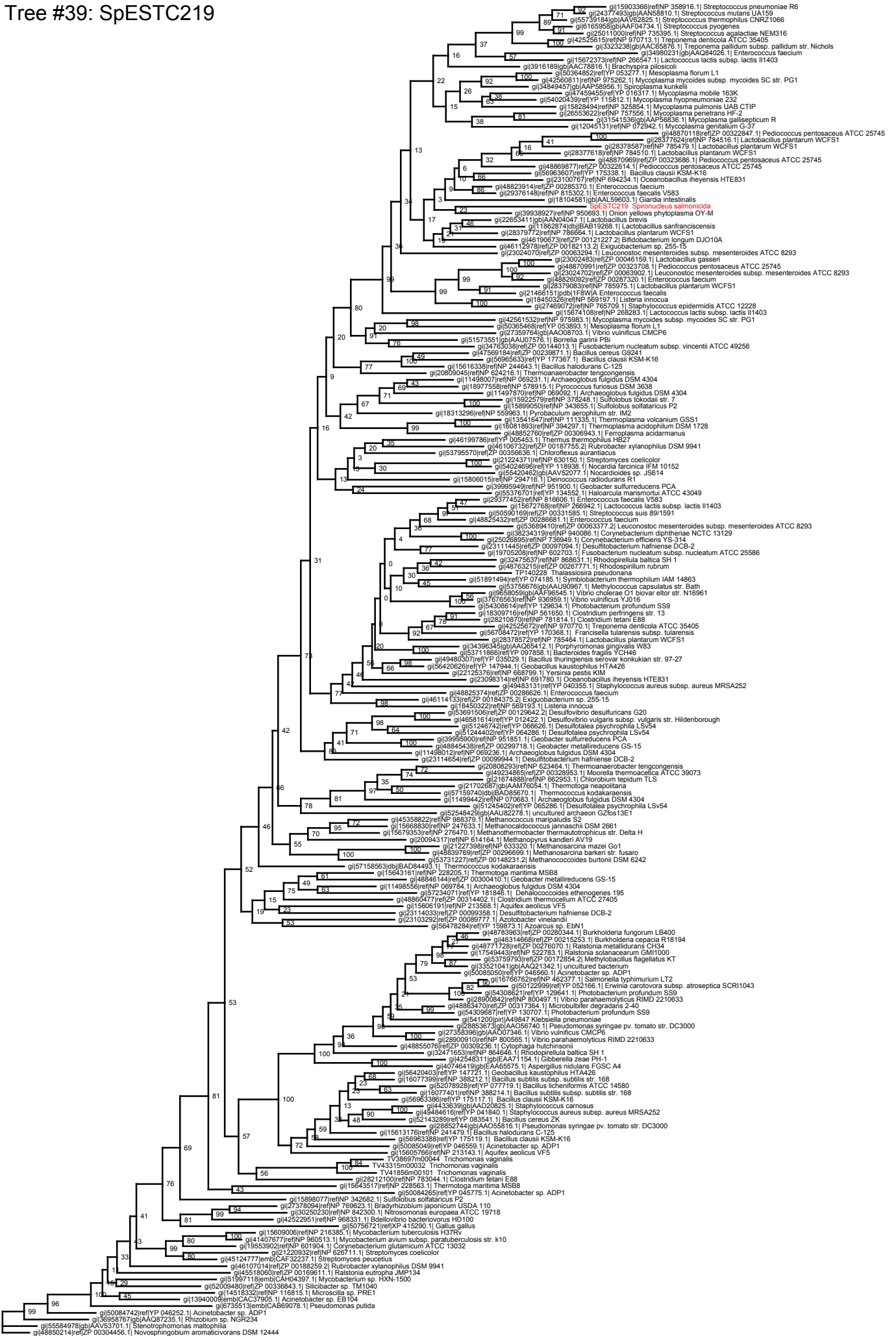
Tree #37: SpESTC204



Tree #38: gZal229bMF



Tree #39: SpESTC219



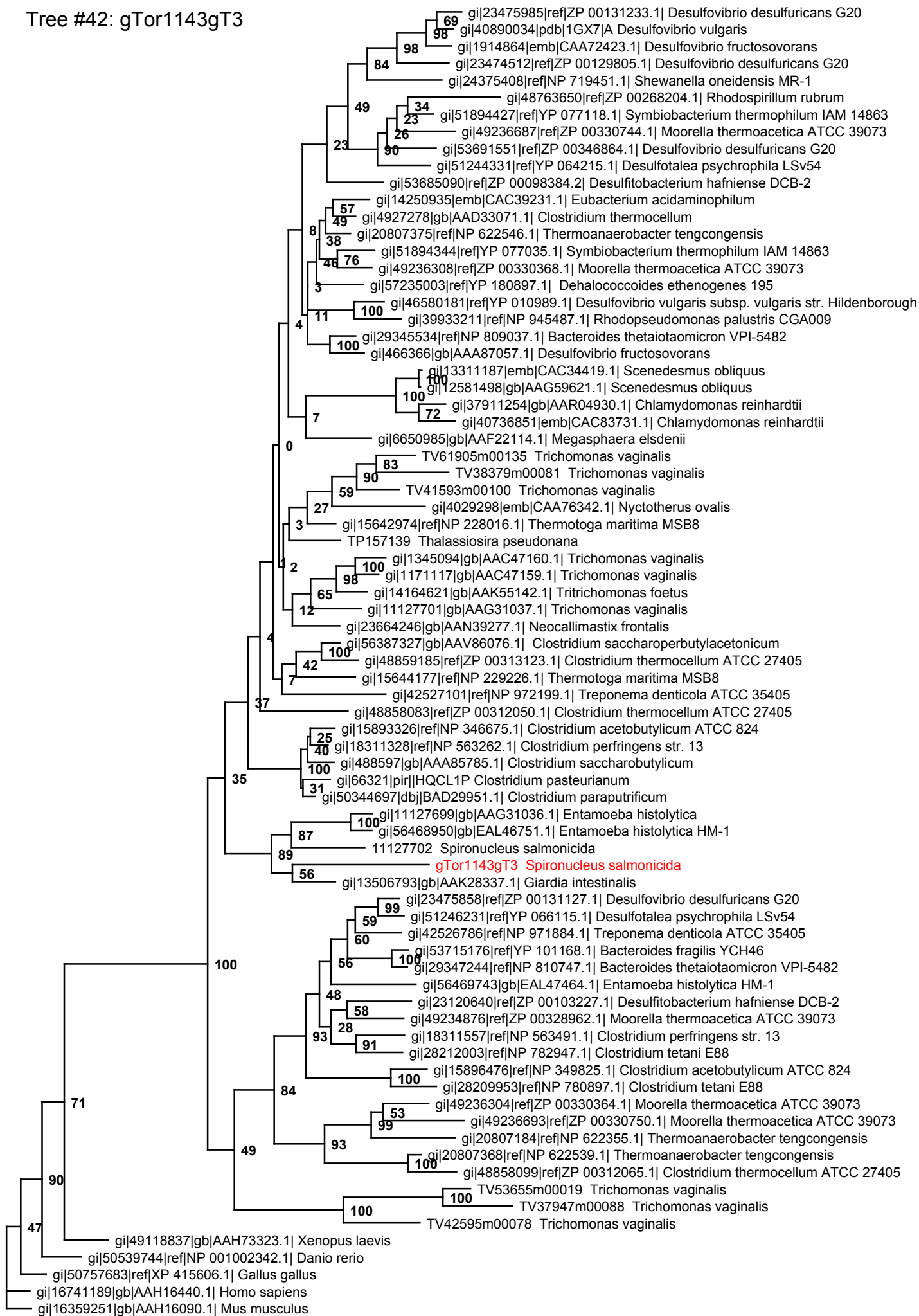
Tree #40: SpESTDH113



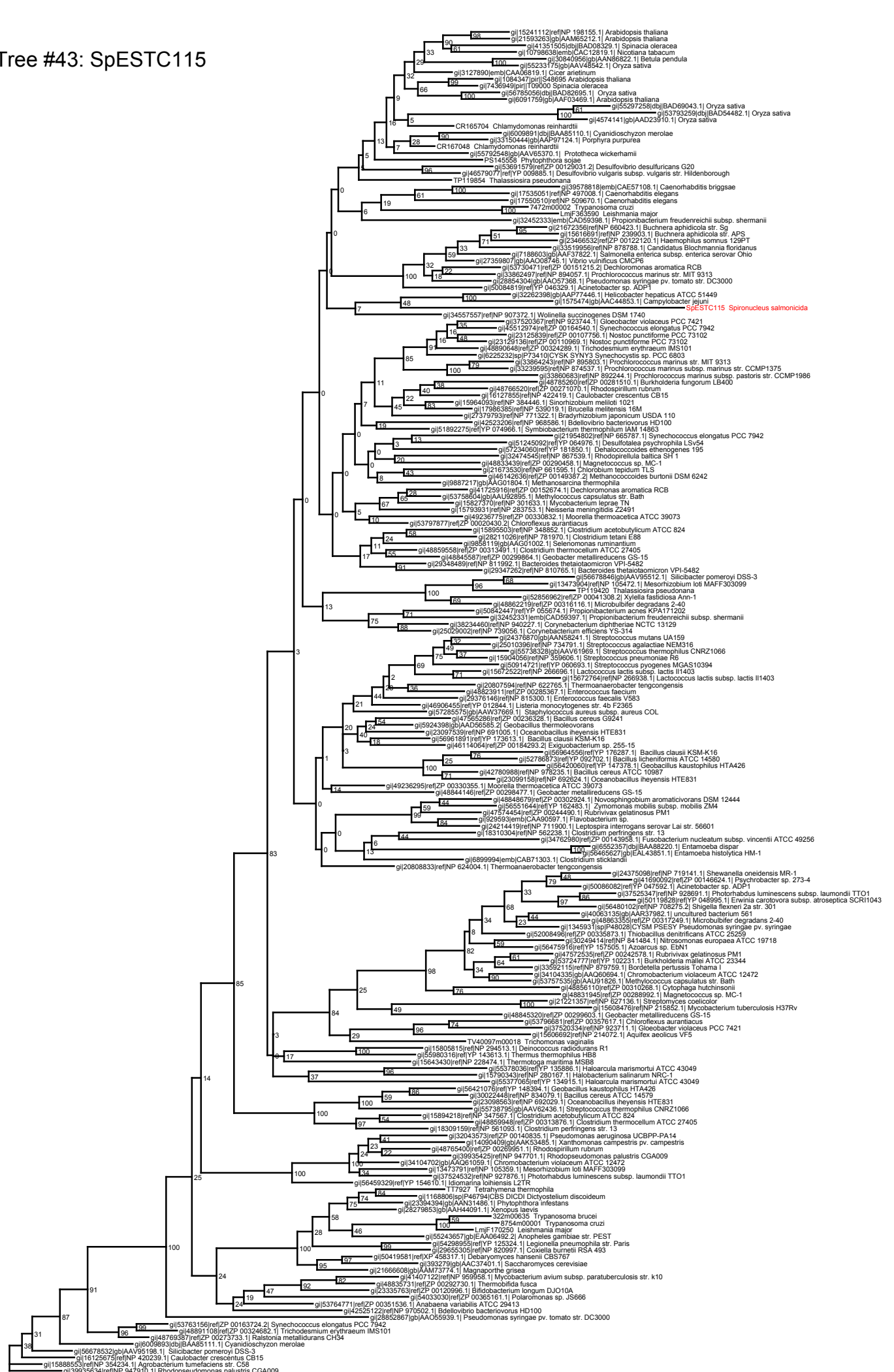
Tree #41: 11127702



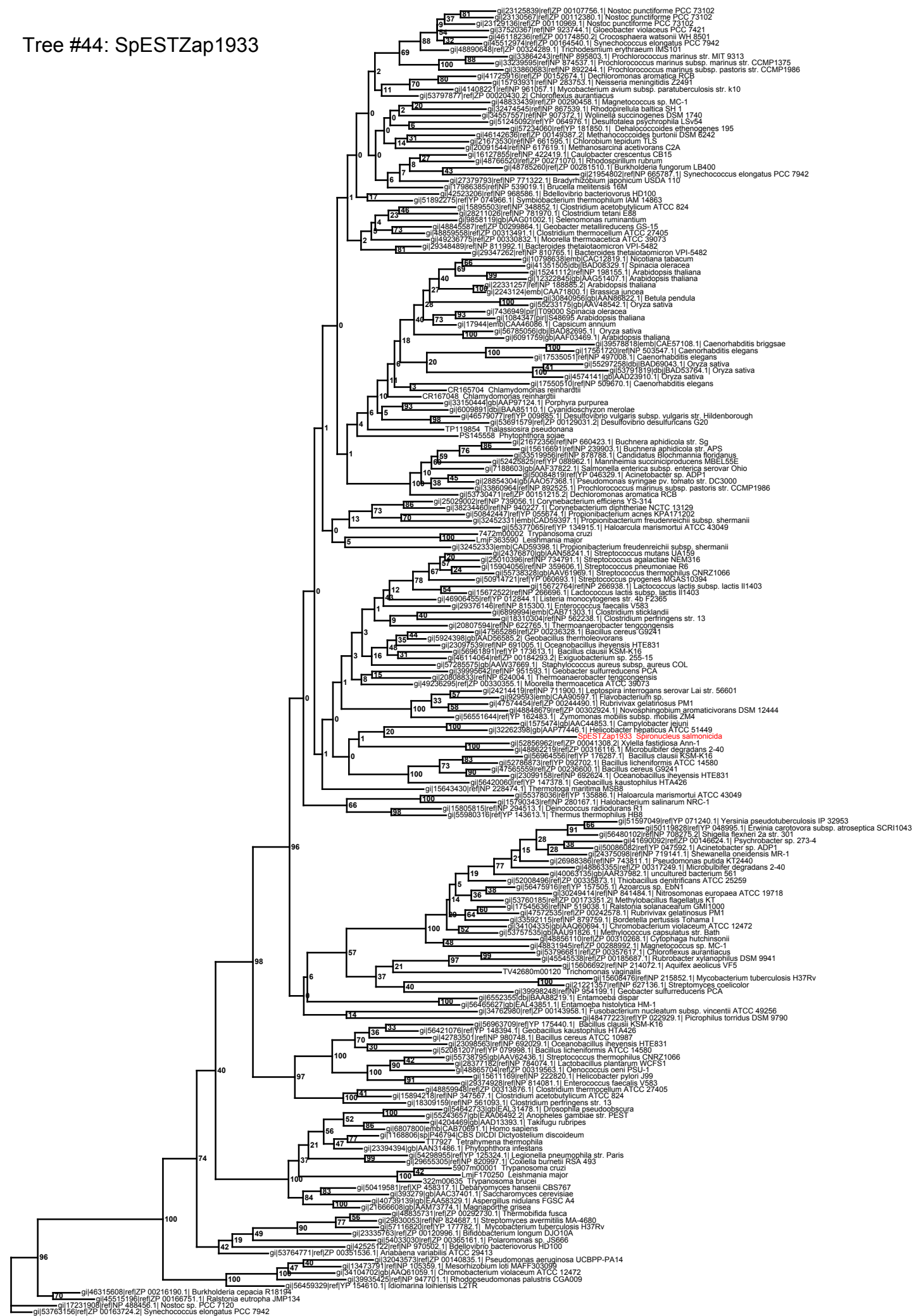
Tree #42: gTor1143gT3



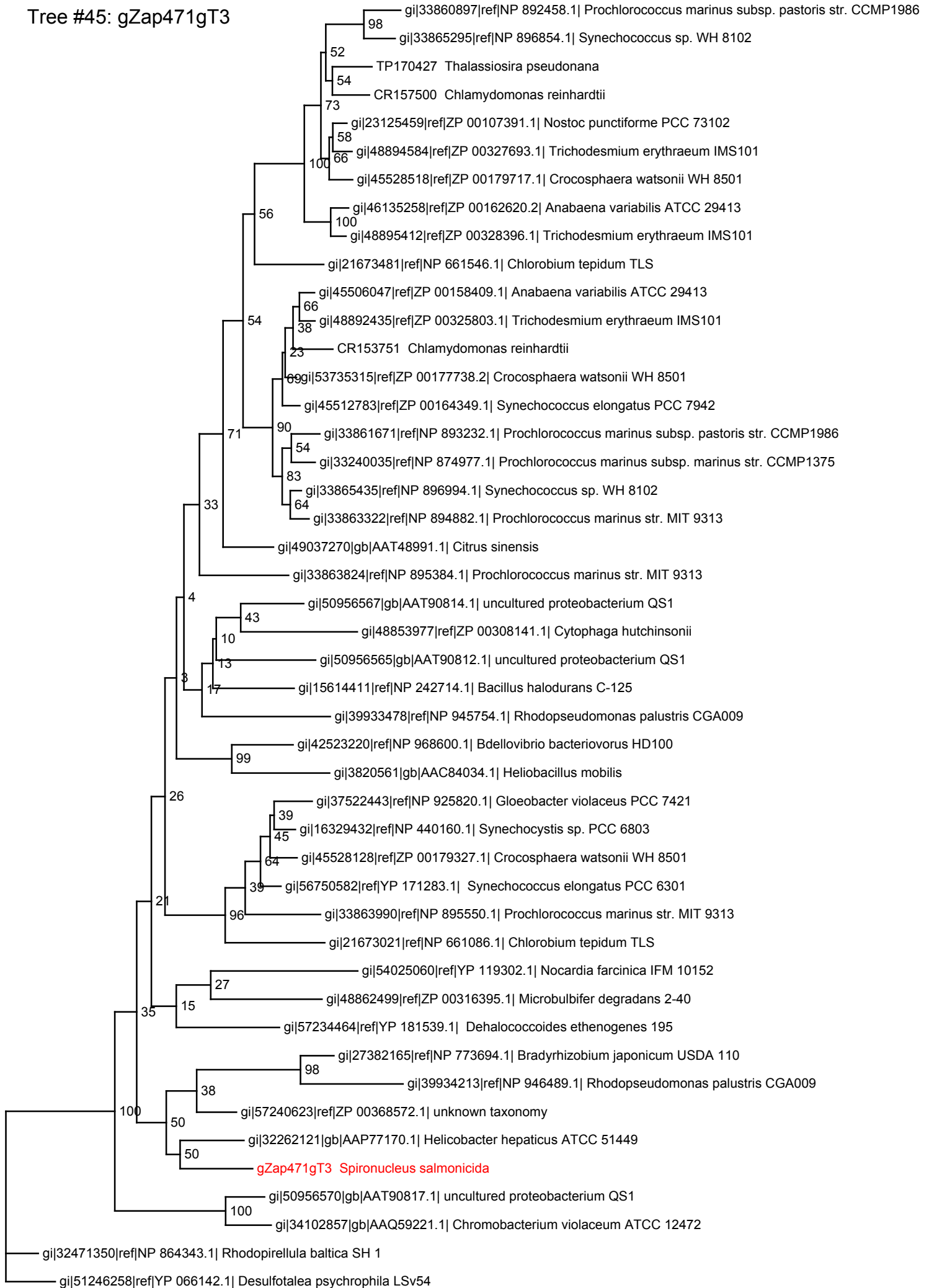
Tree #43: SpESTC115



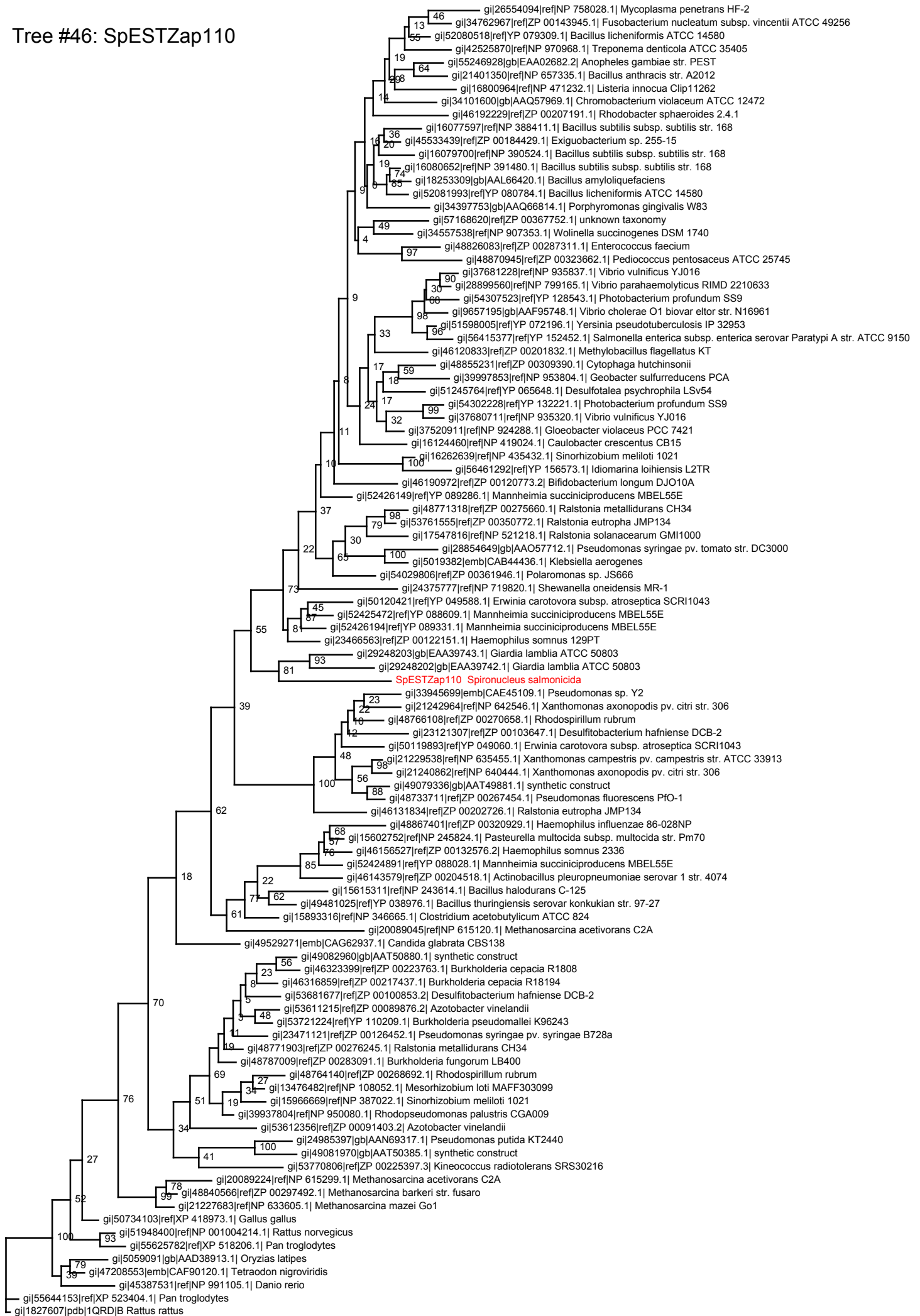
Tree #44: SpESTZap1933



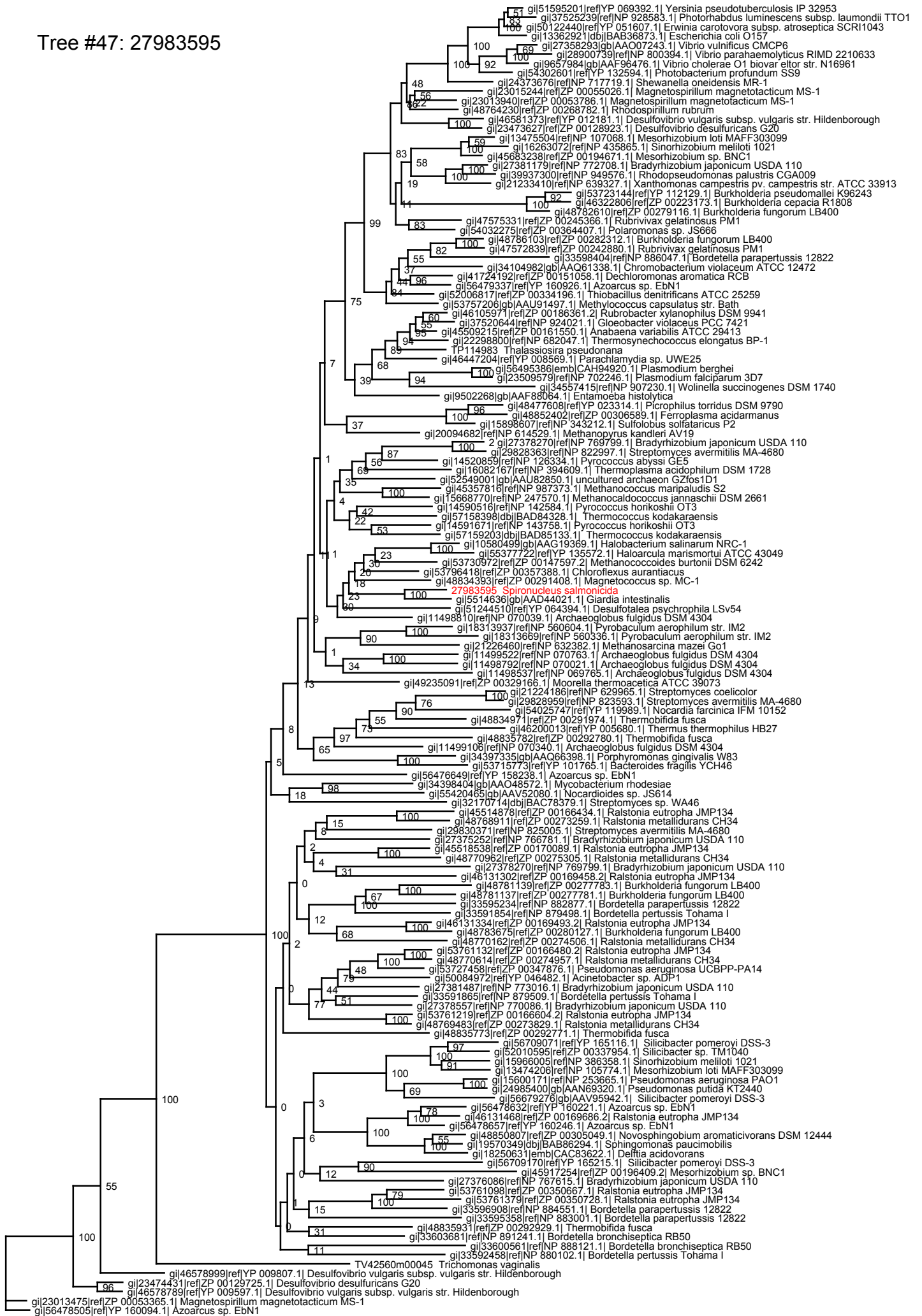
Tree #45: gZap471gT3



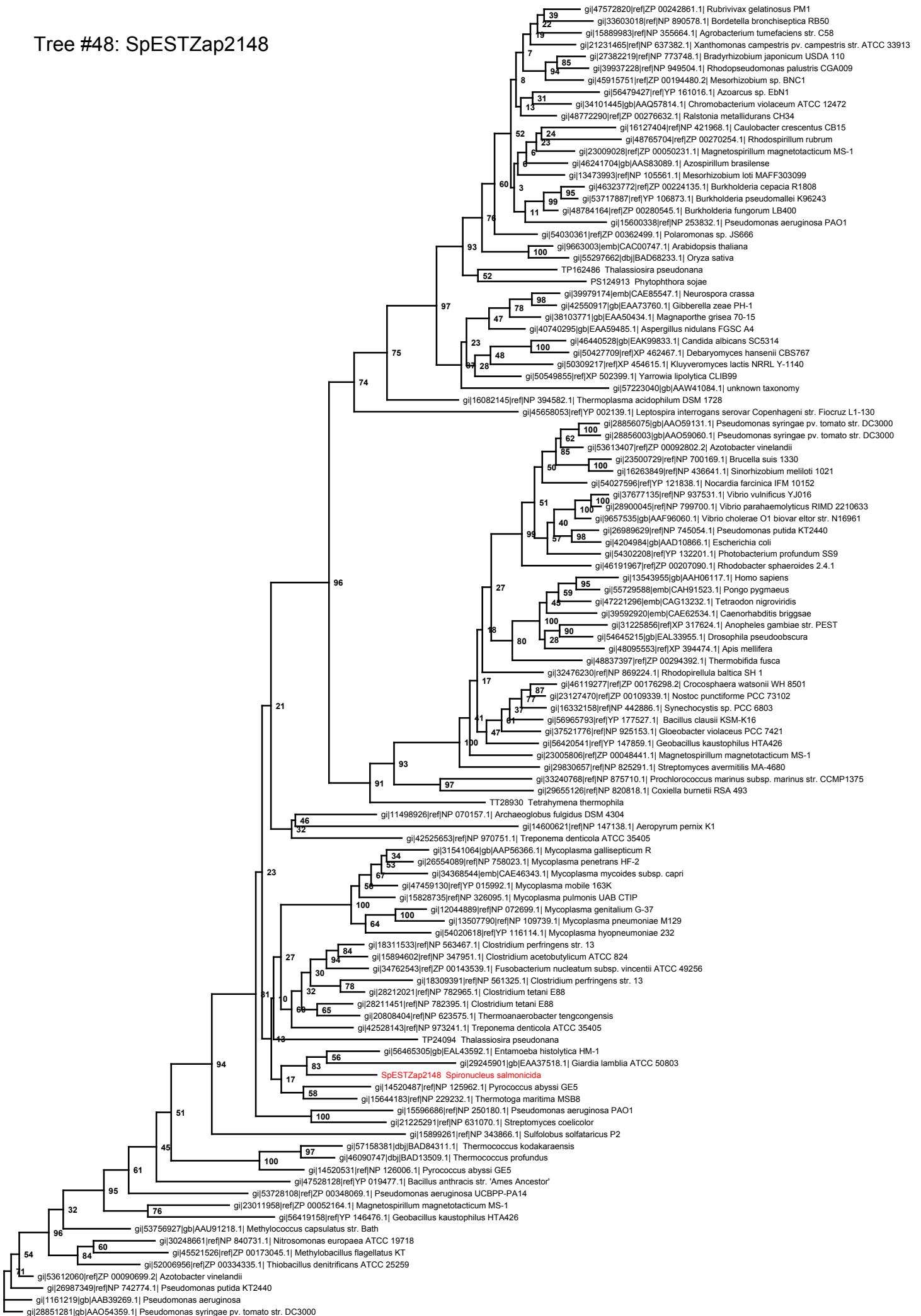
Tree #46: SpESTZap110



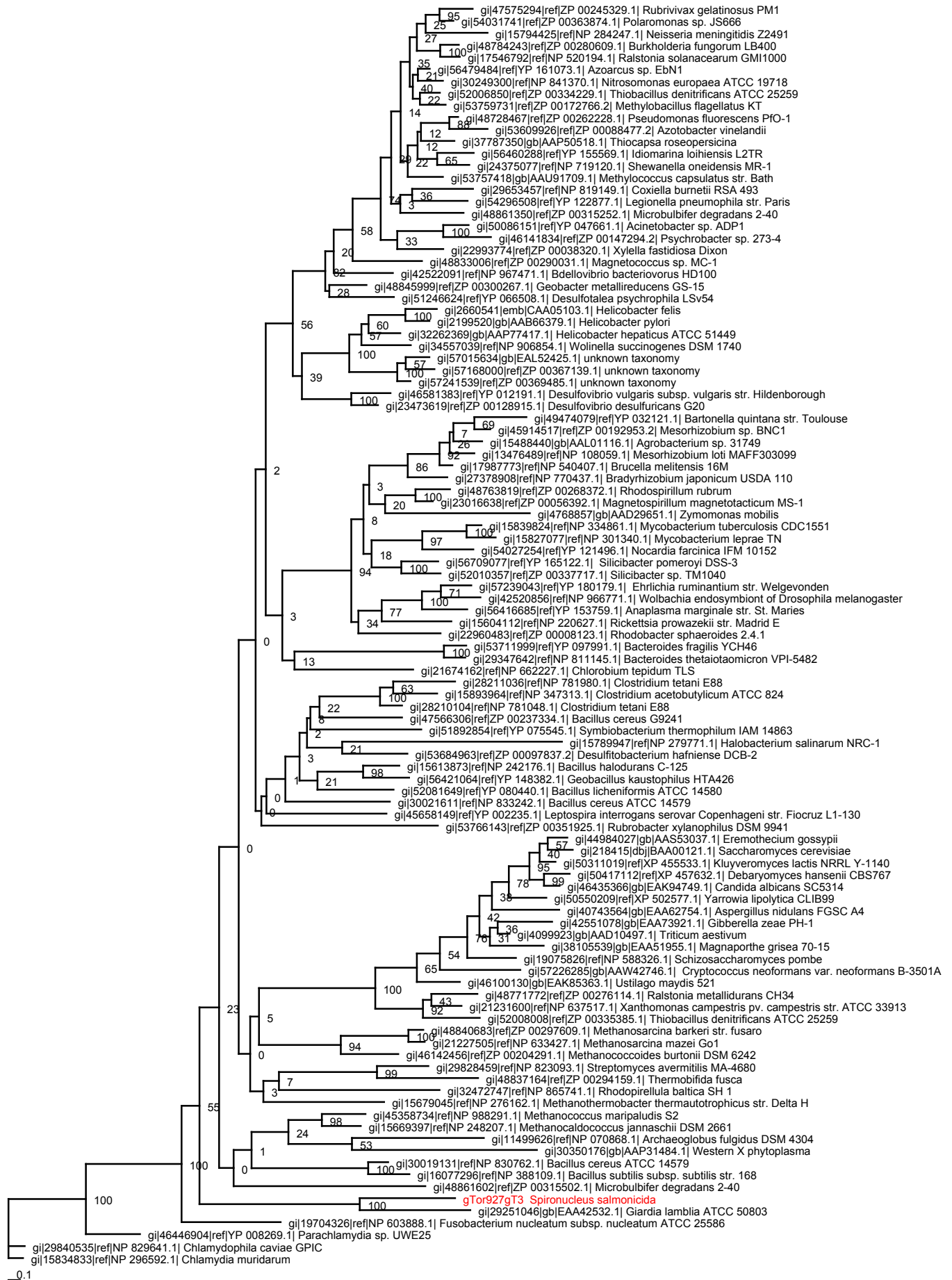
Tree #47: 27983595



Tree #48: SpESTZap2148



Tree #49: gTor927gT3



Tree #50: gZar919bT7

