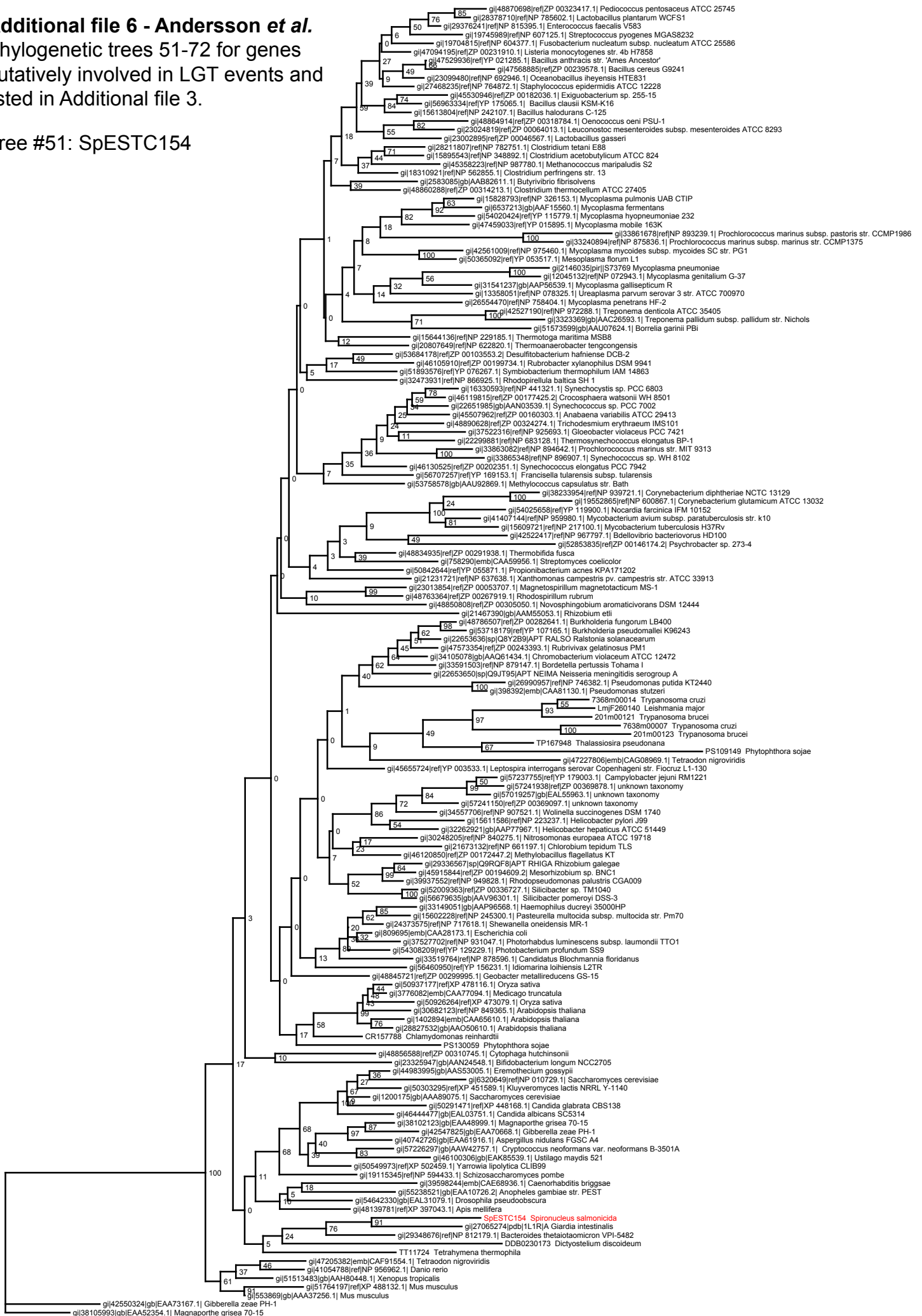


Additional file 6 - Andersson et al.

Phylogenetic trees 51-72 for genes putatively involved in LGT events and listed in Additional file 3.

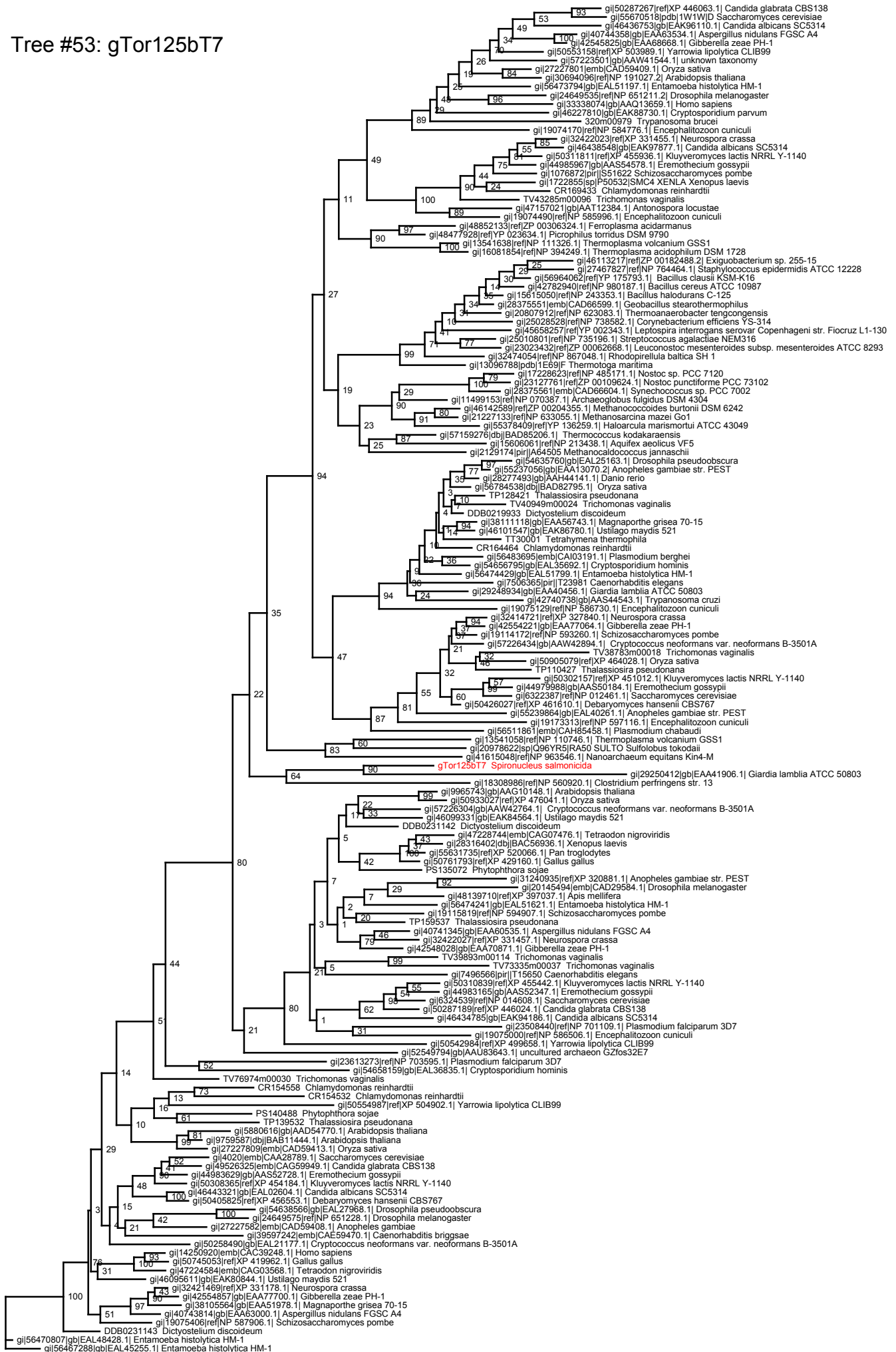
Tree #51: SpESTC154



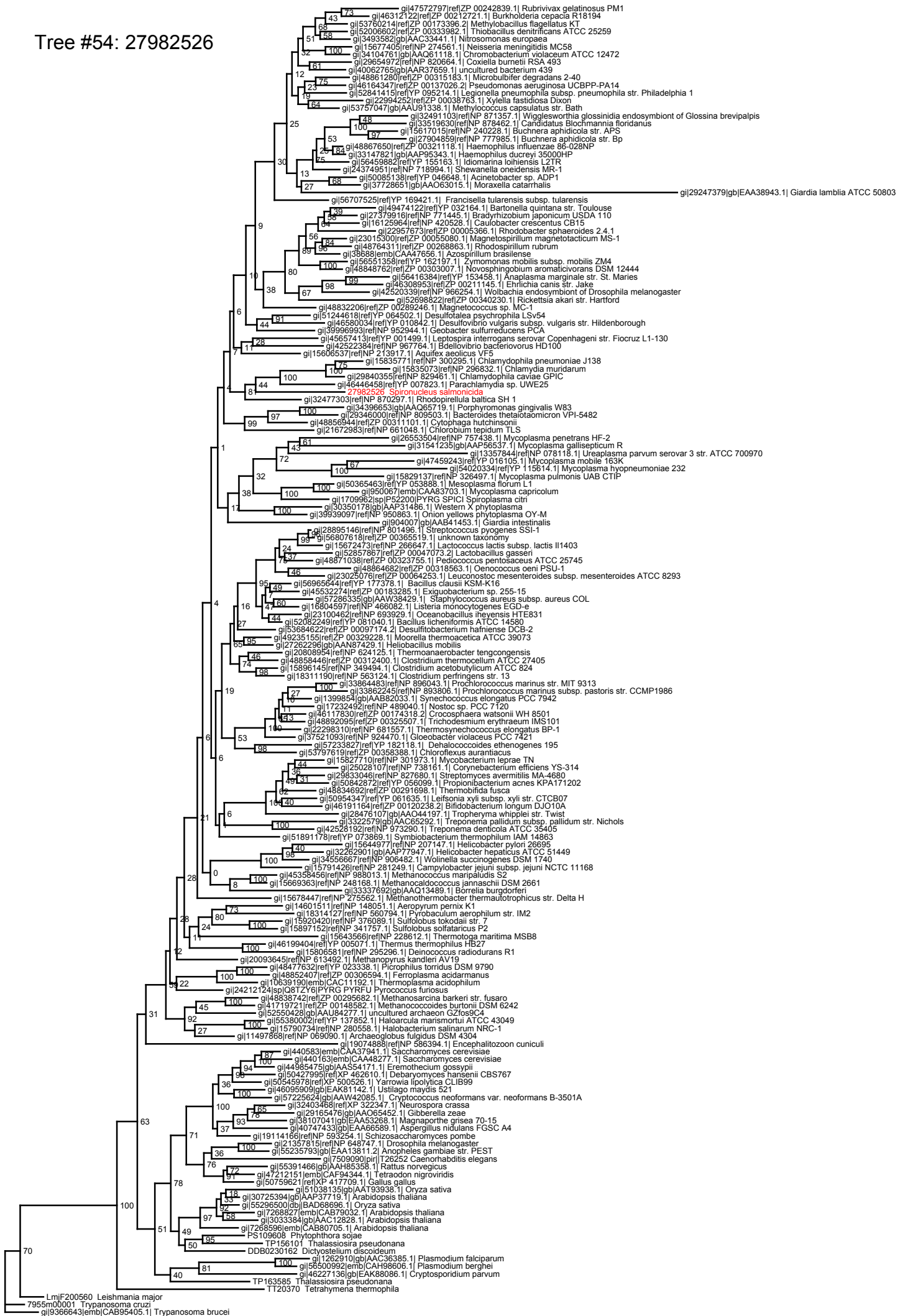
Tree #52: SpESTC251,
SpESTC254



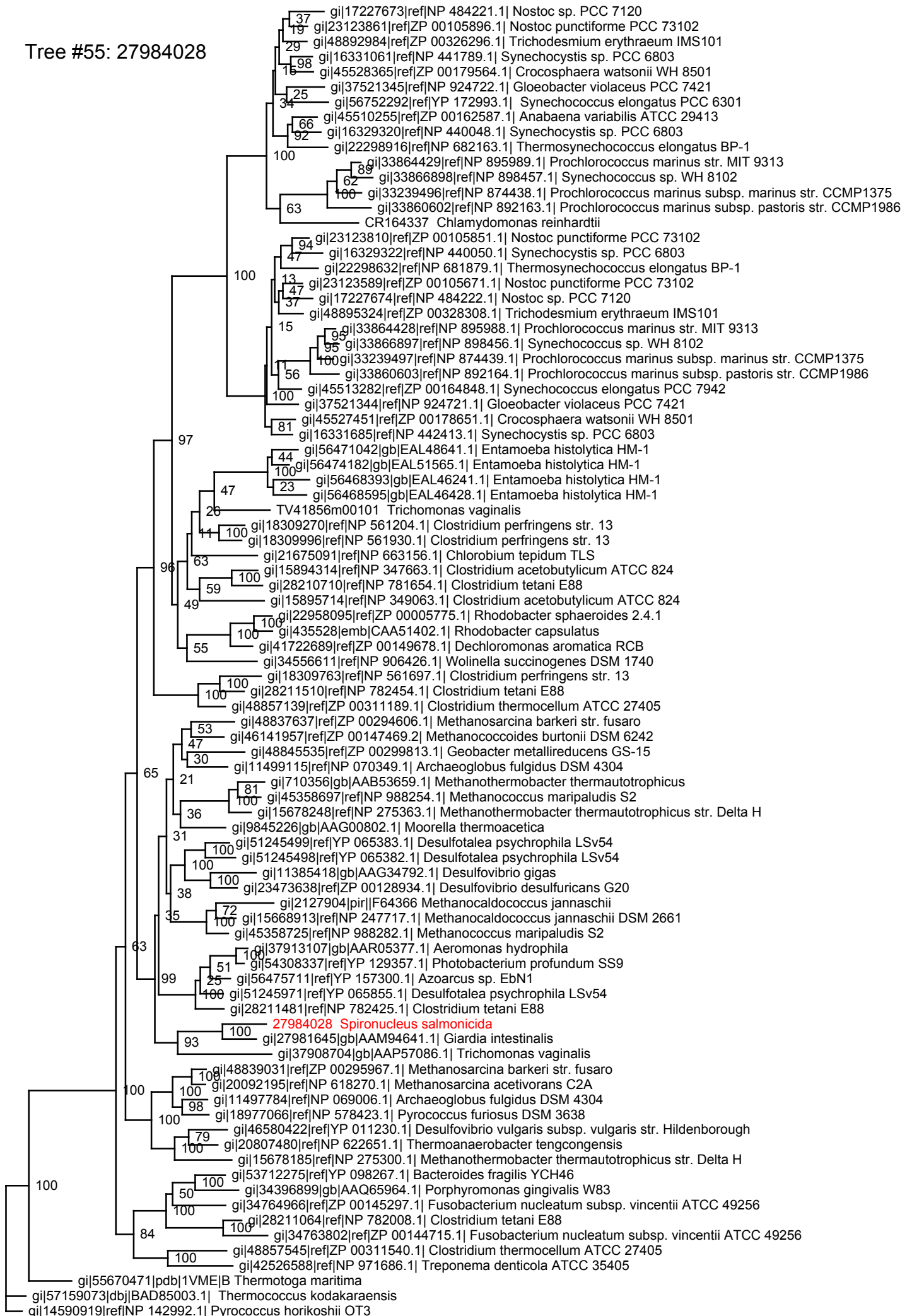
Tree #53: gTor125bT7



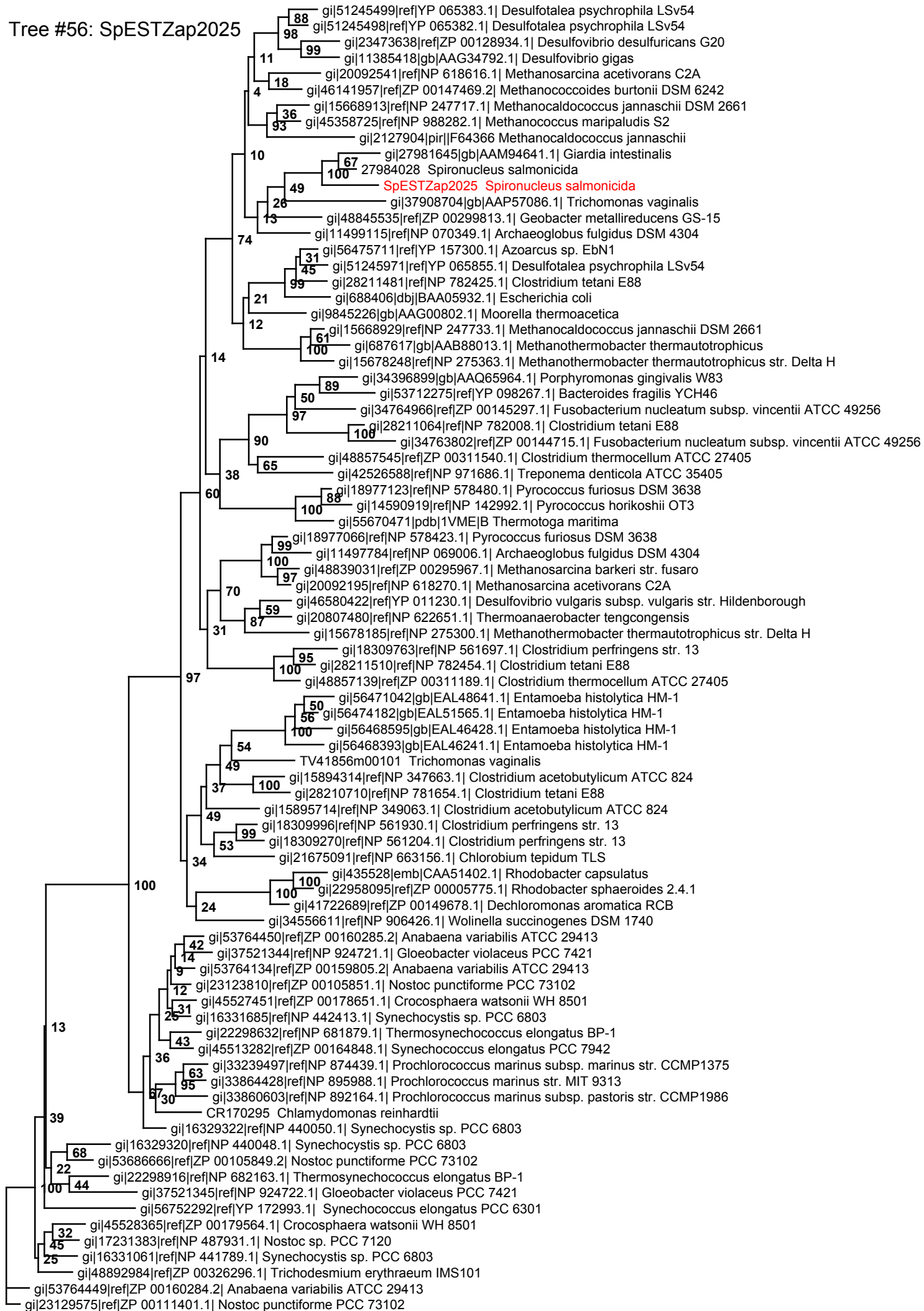
Tree #54: 27982526



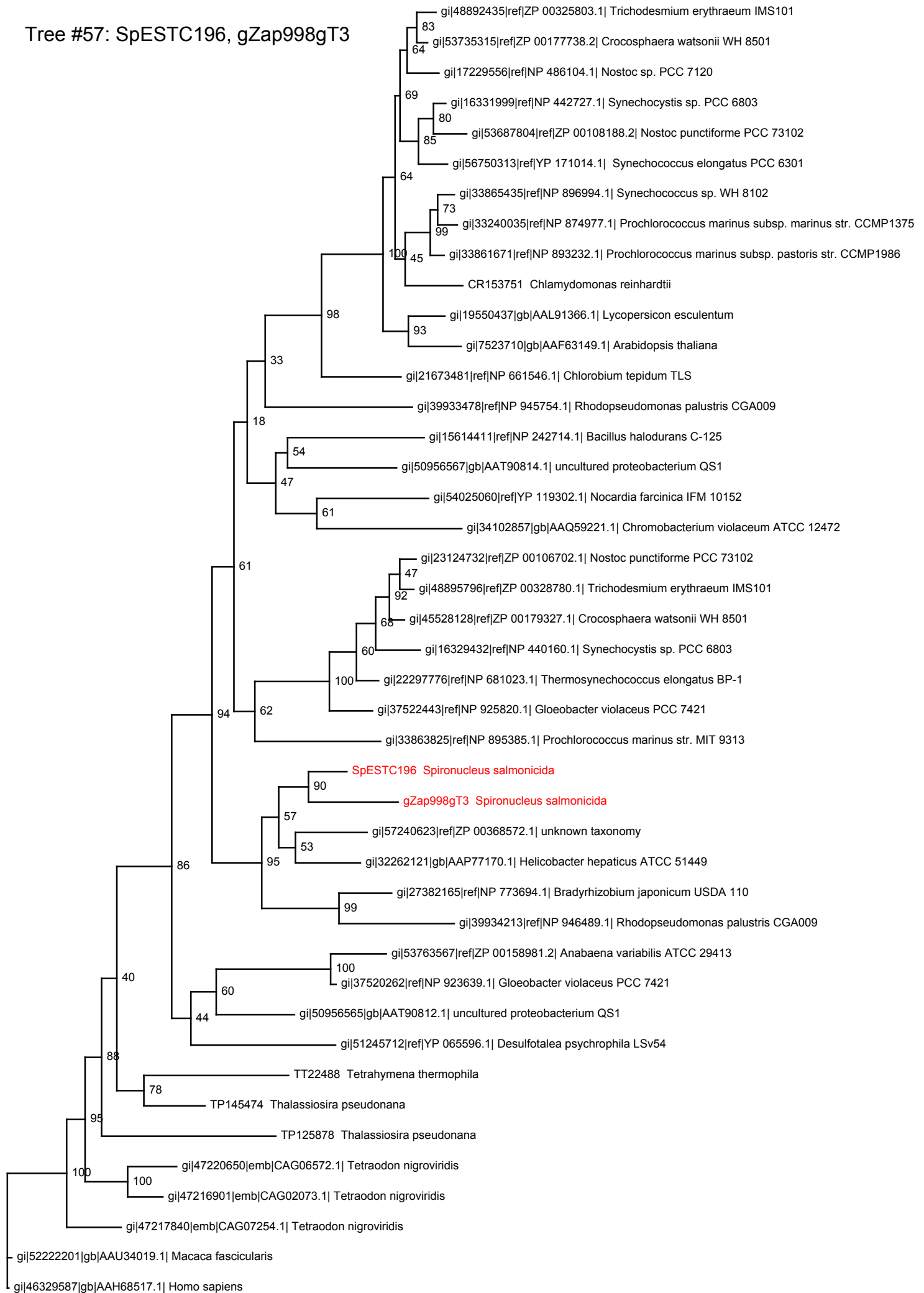
Tree #55: 27984028



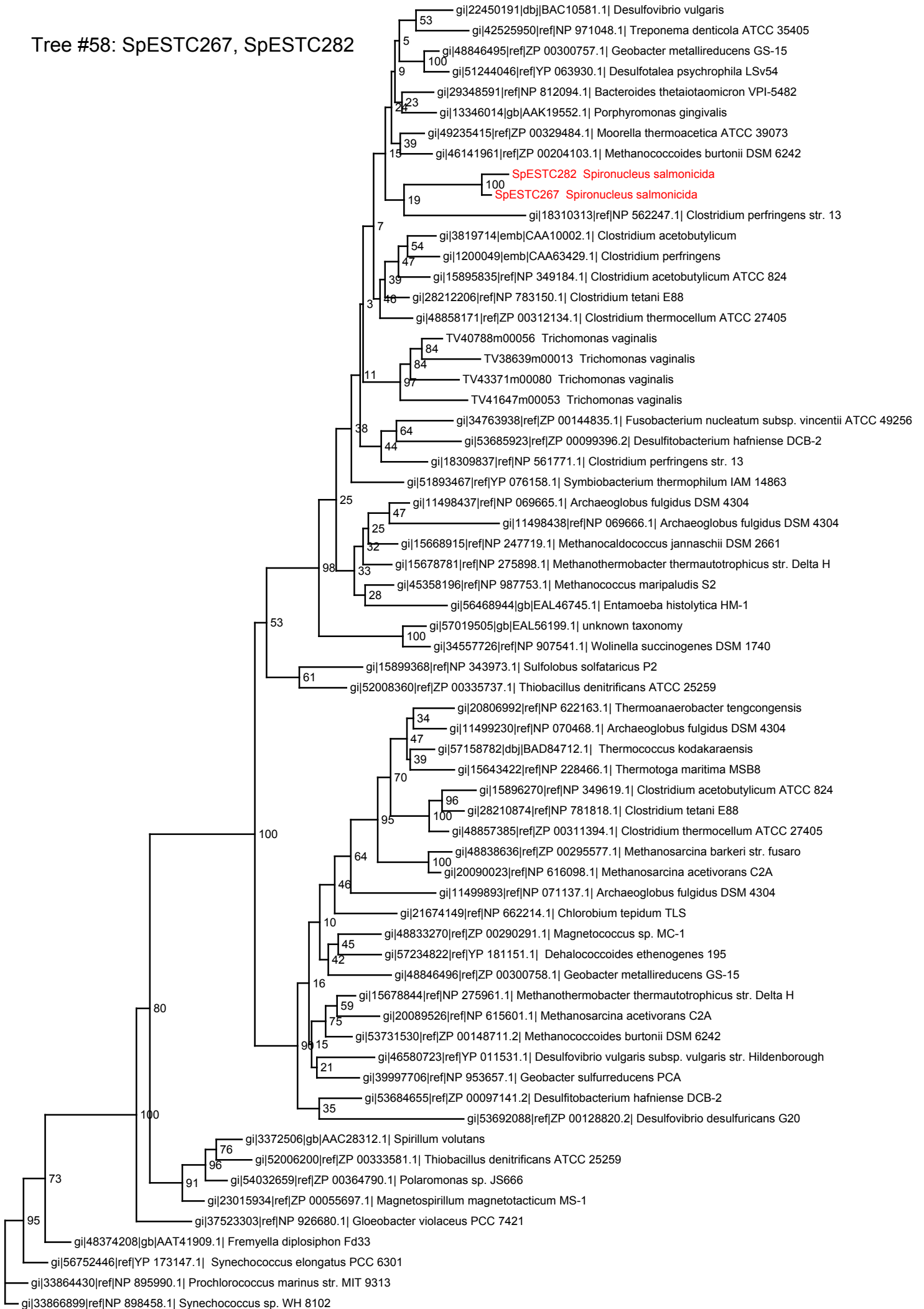
Tree #56: SpESTZap2025



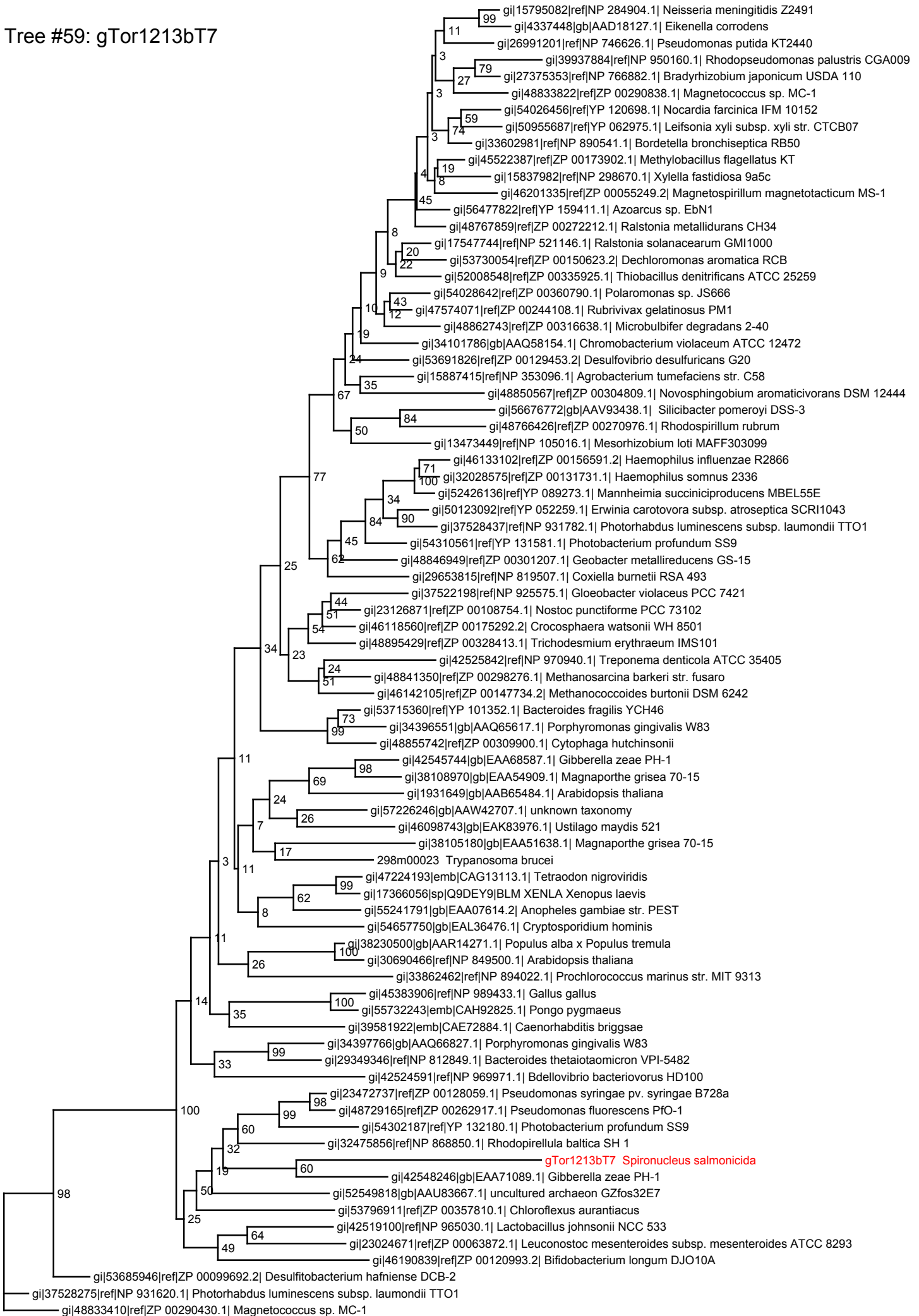
Tree #57: SpESTC196, gZap998gT3



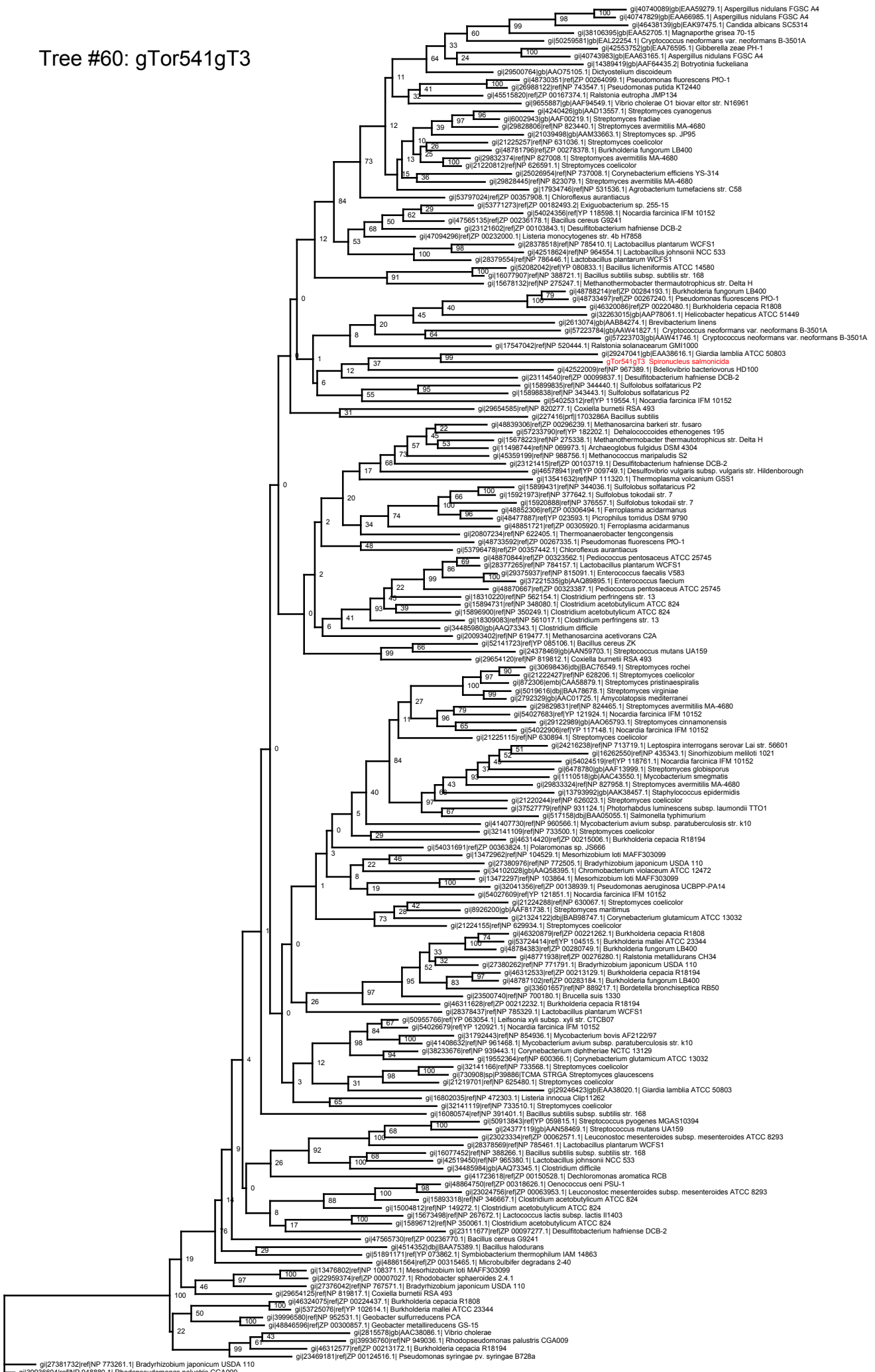
Tree #58: SpESTC267, SpESTC282



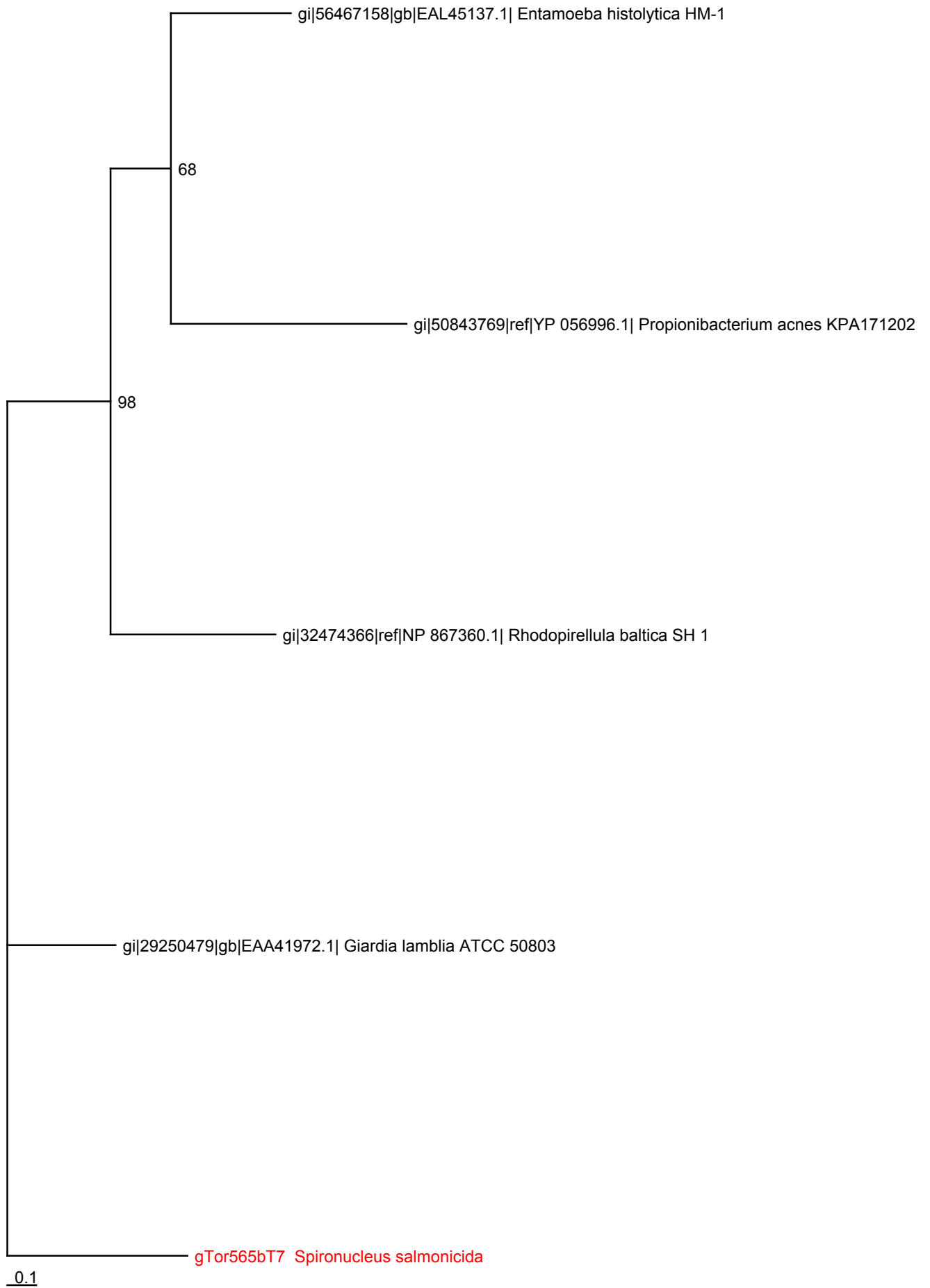
Tree #59: gTor1213bT7



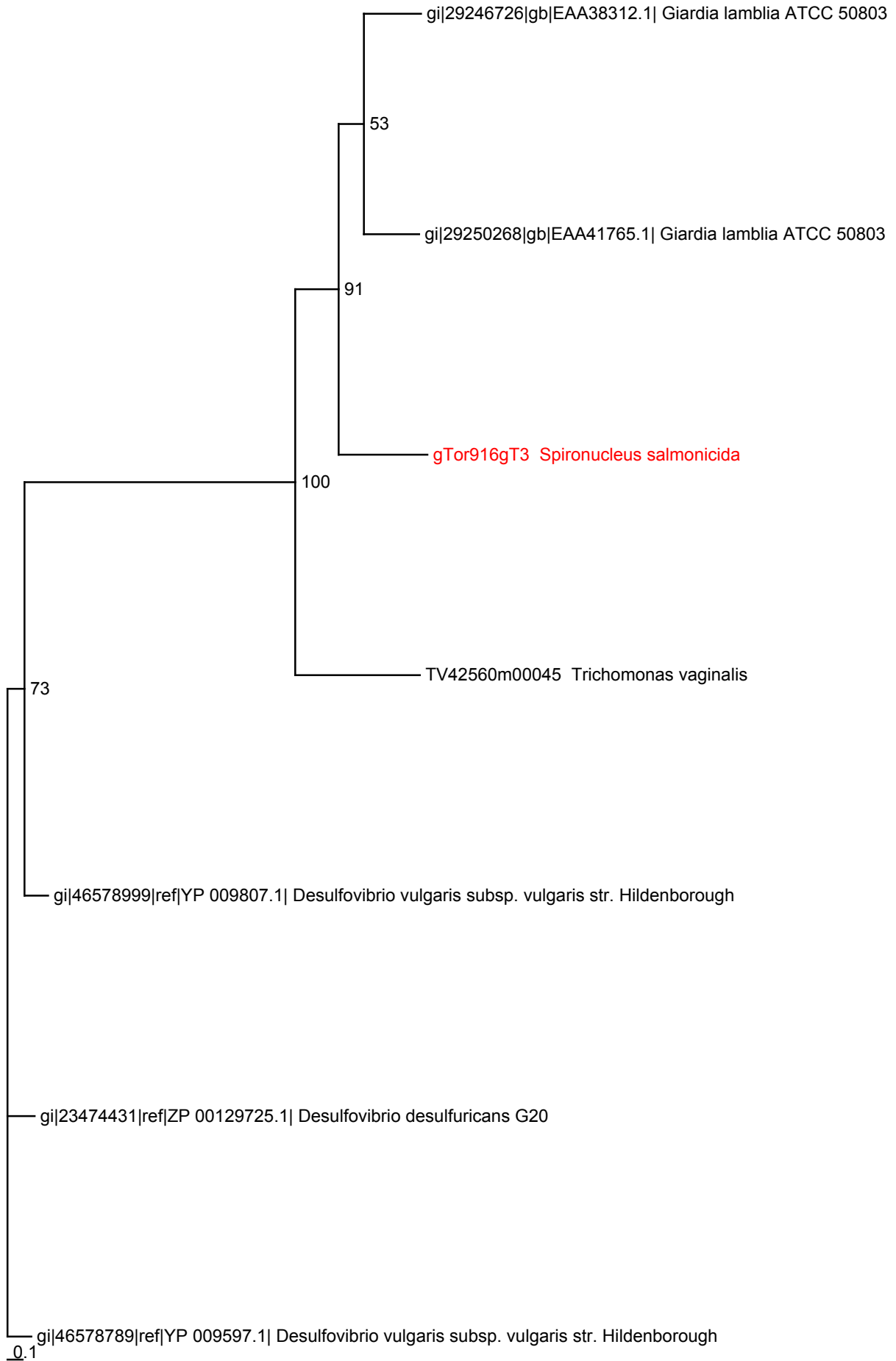
Tree #60: gTor541gT3



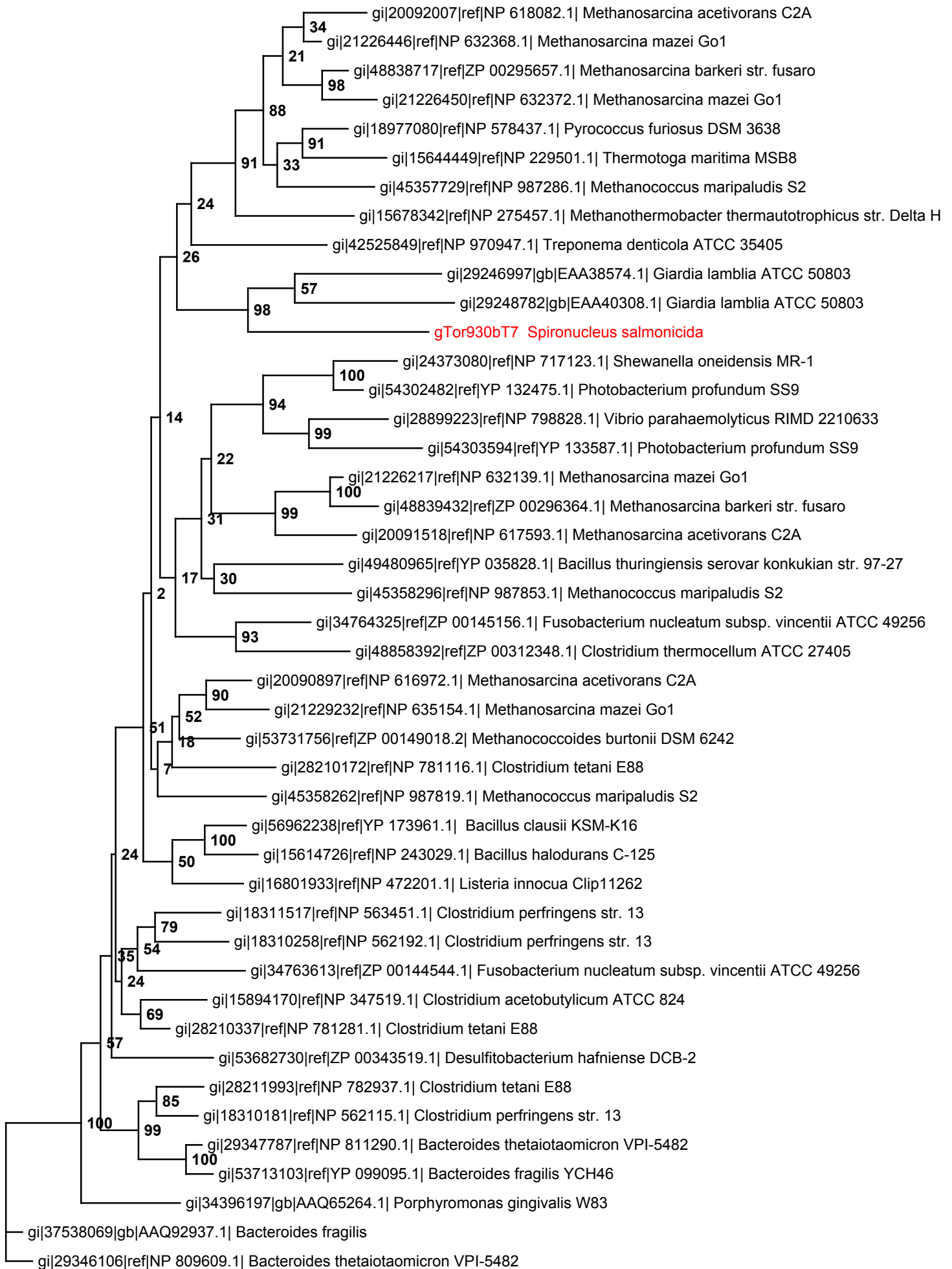
Tree #61: gTor565bT7



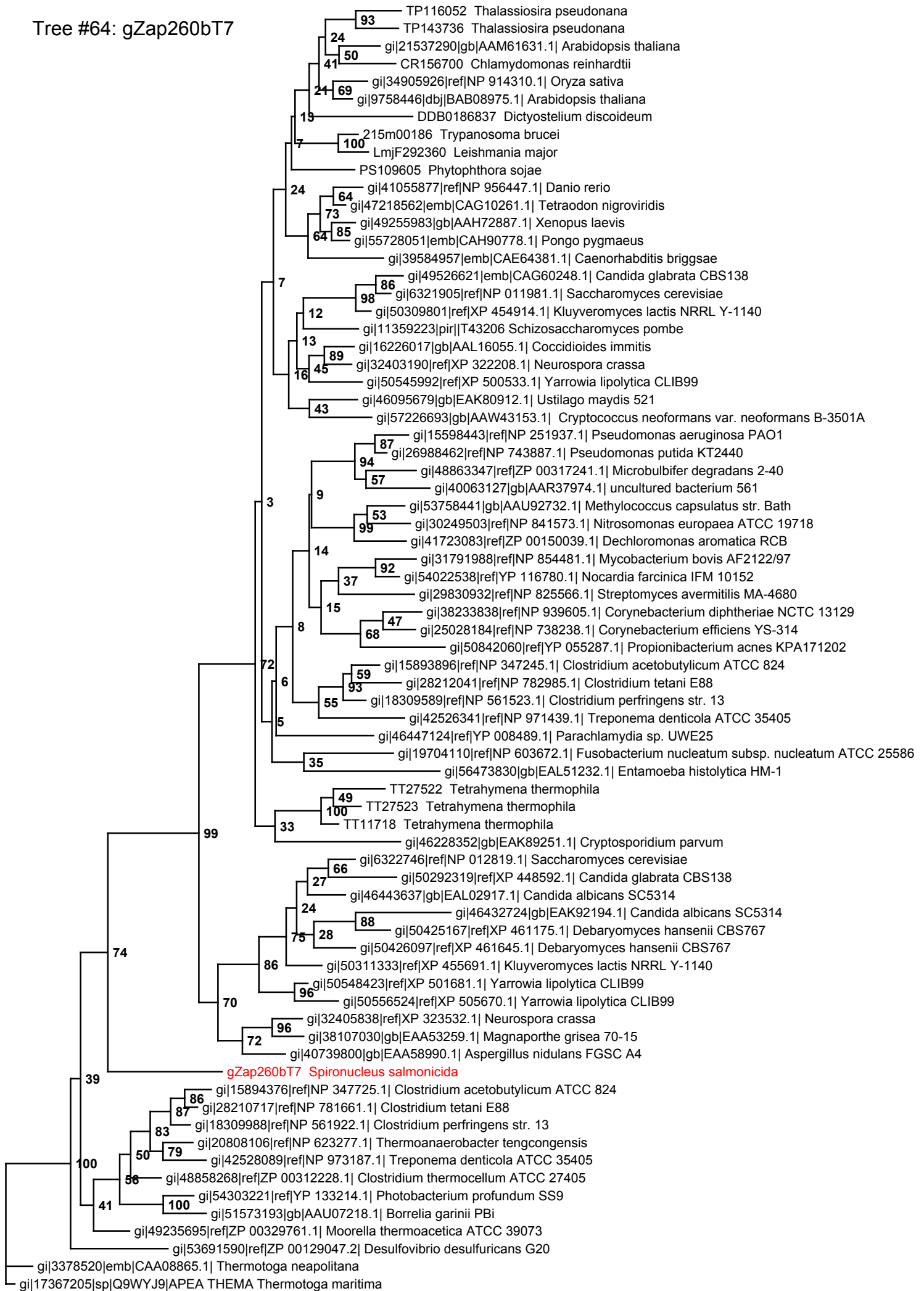
Tree #62: gTor916gT3



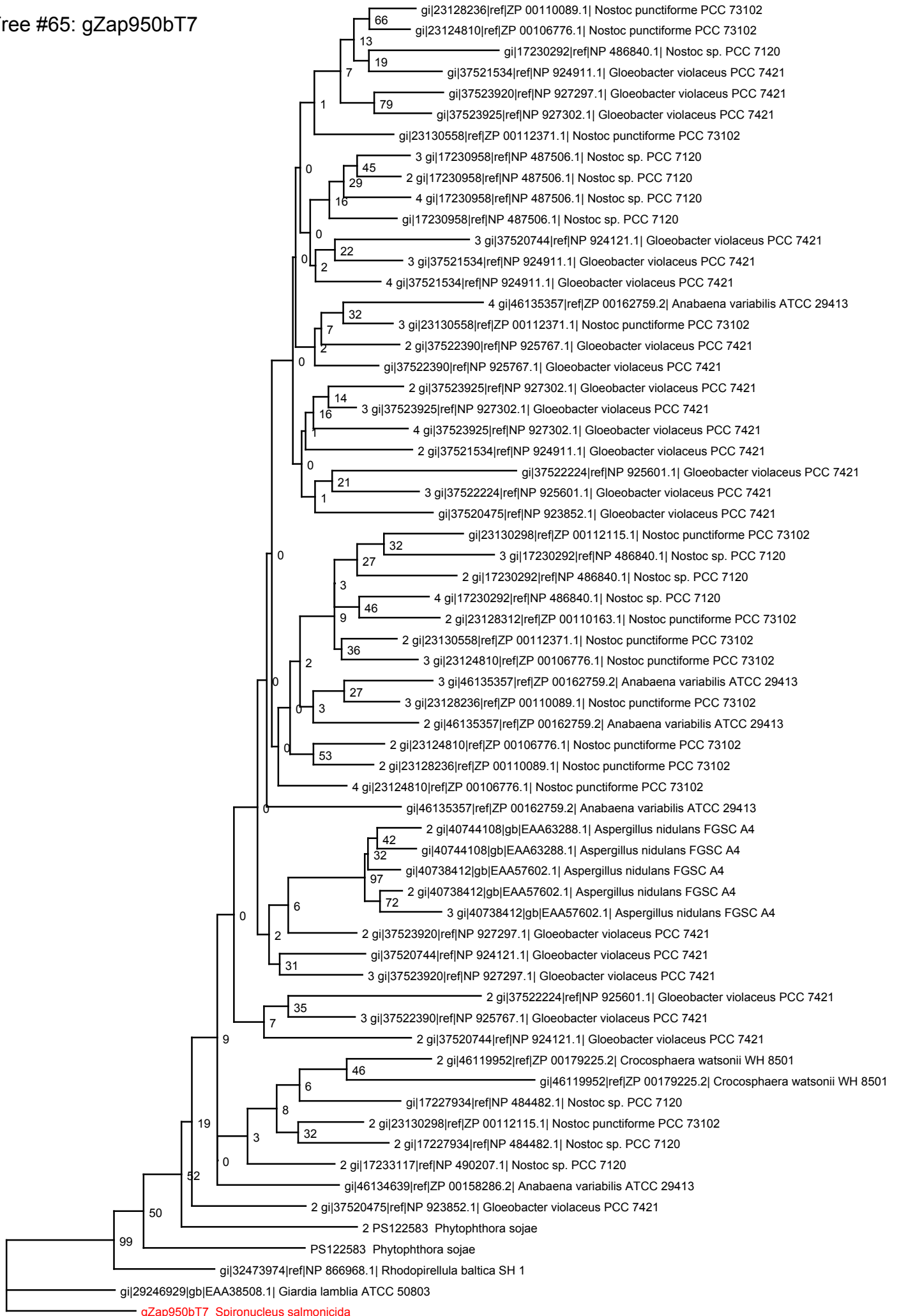
Tree #63: gTor930bT7



Tree #64: gZap260bT7



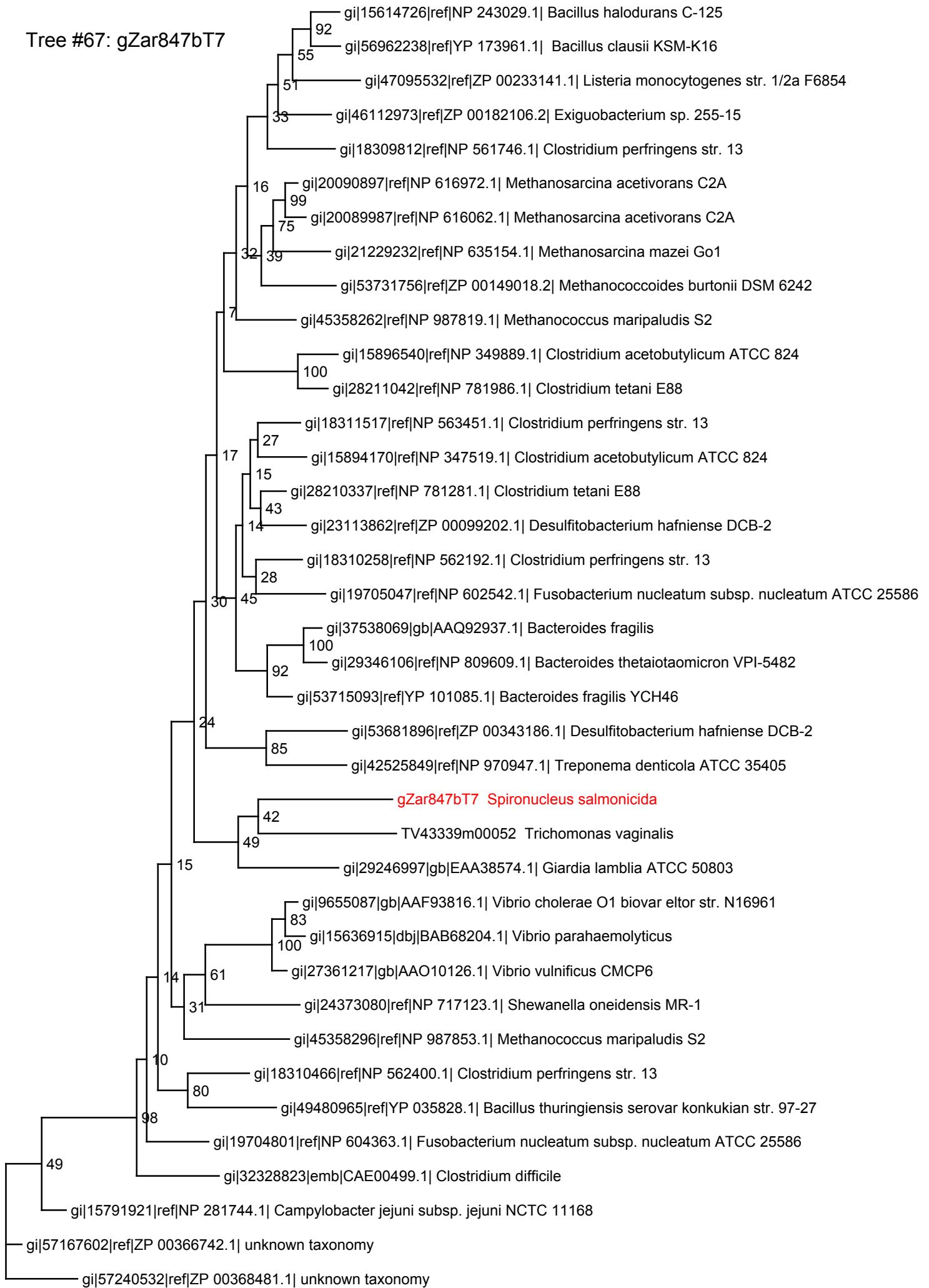
Tree #65: gZap950bT7



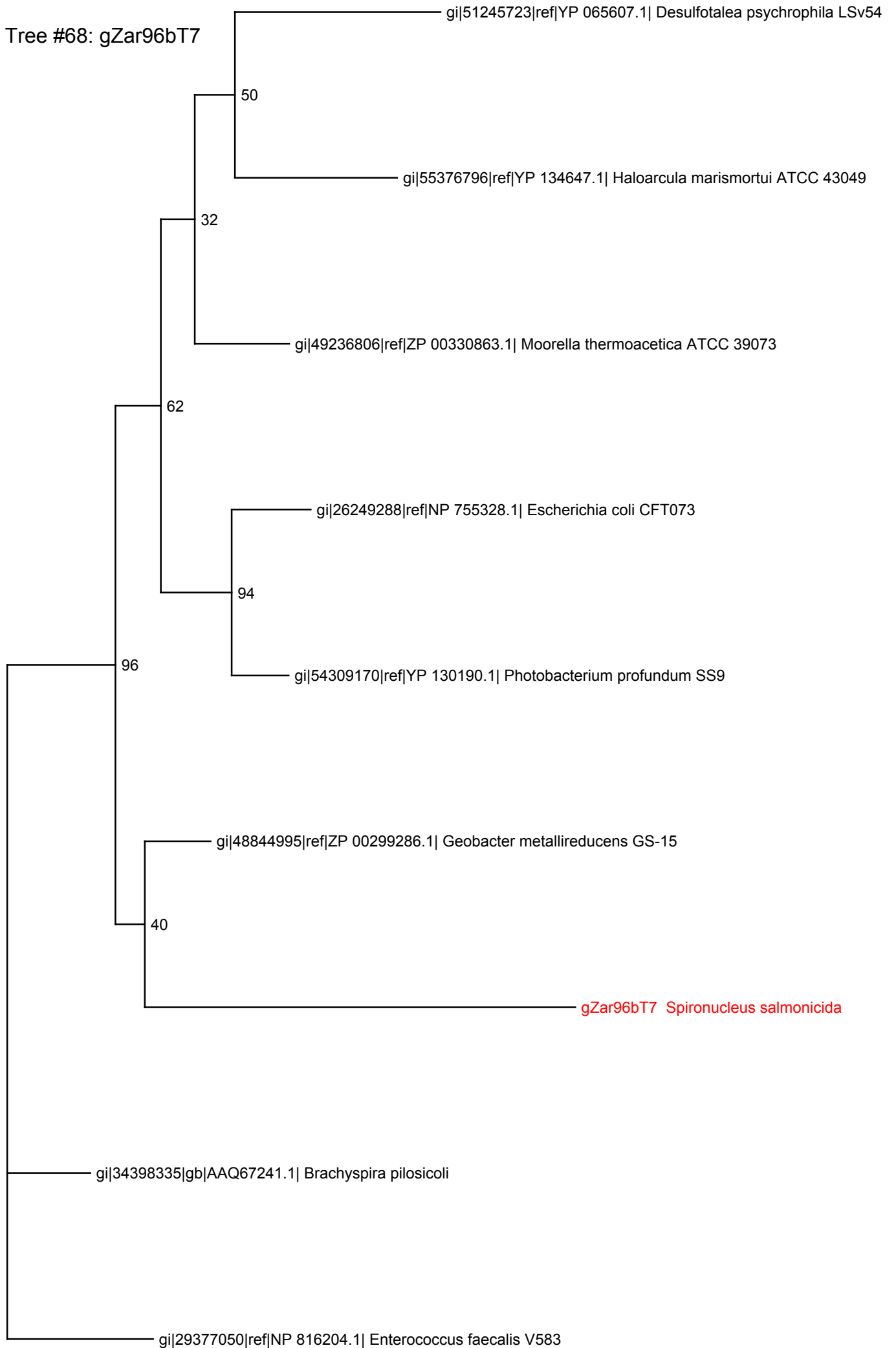
Tree #66: gZar587bT72



Tree #67: gZar847bT7



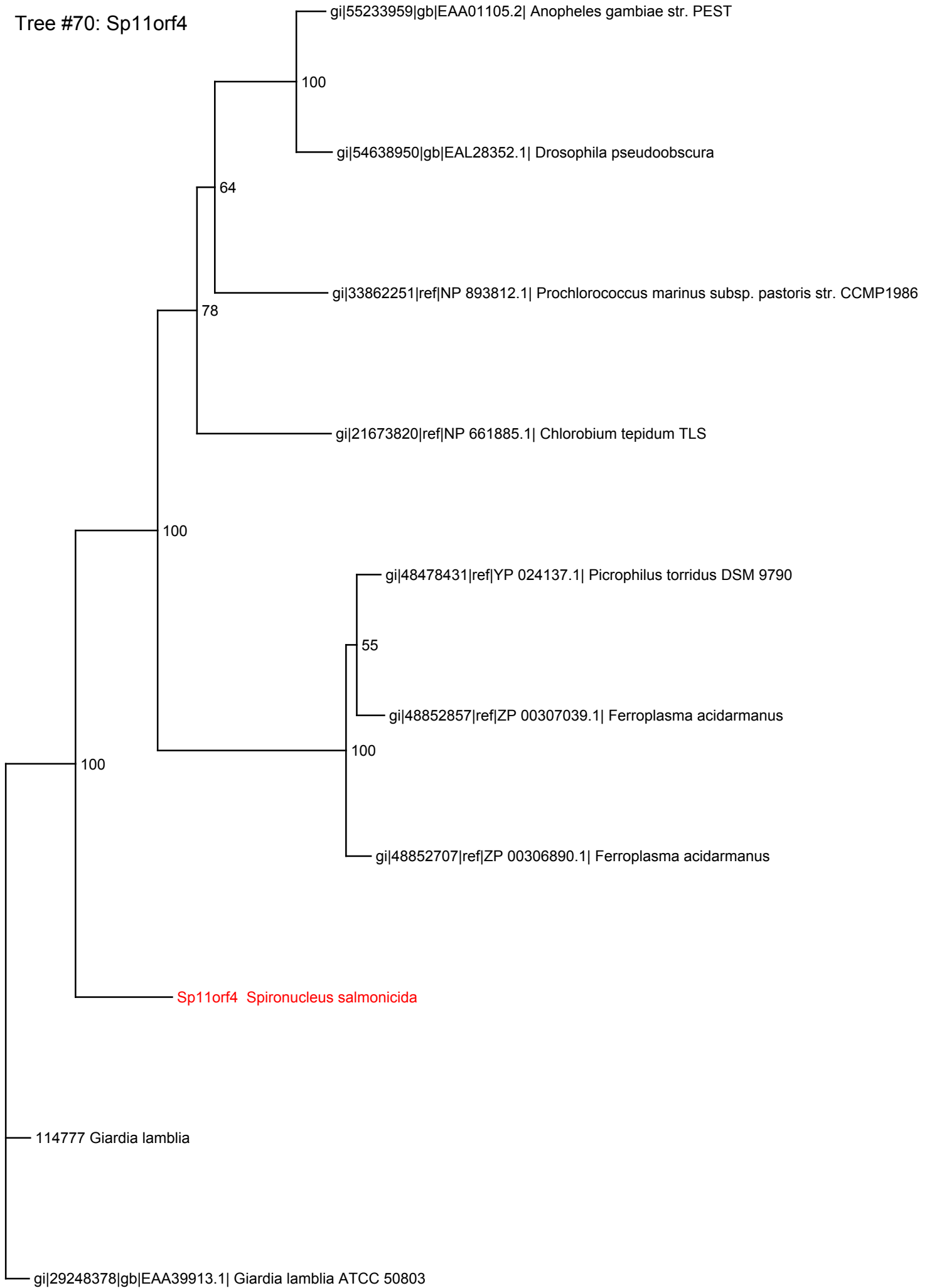
Tree #68: gZar96bT7



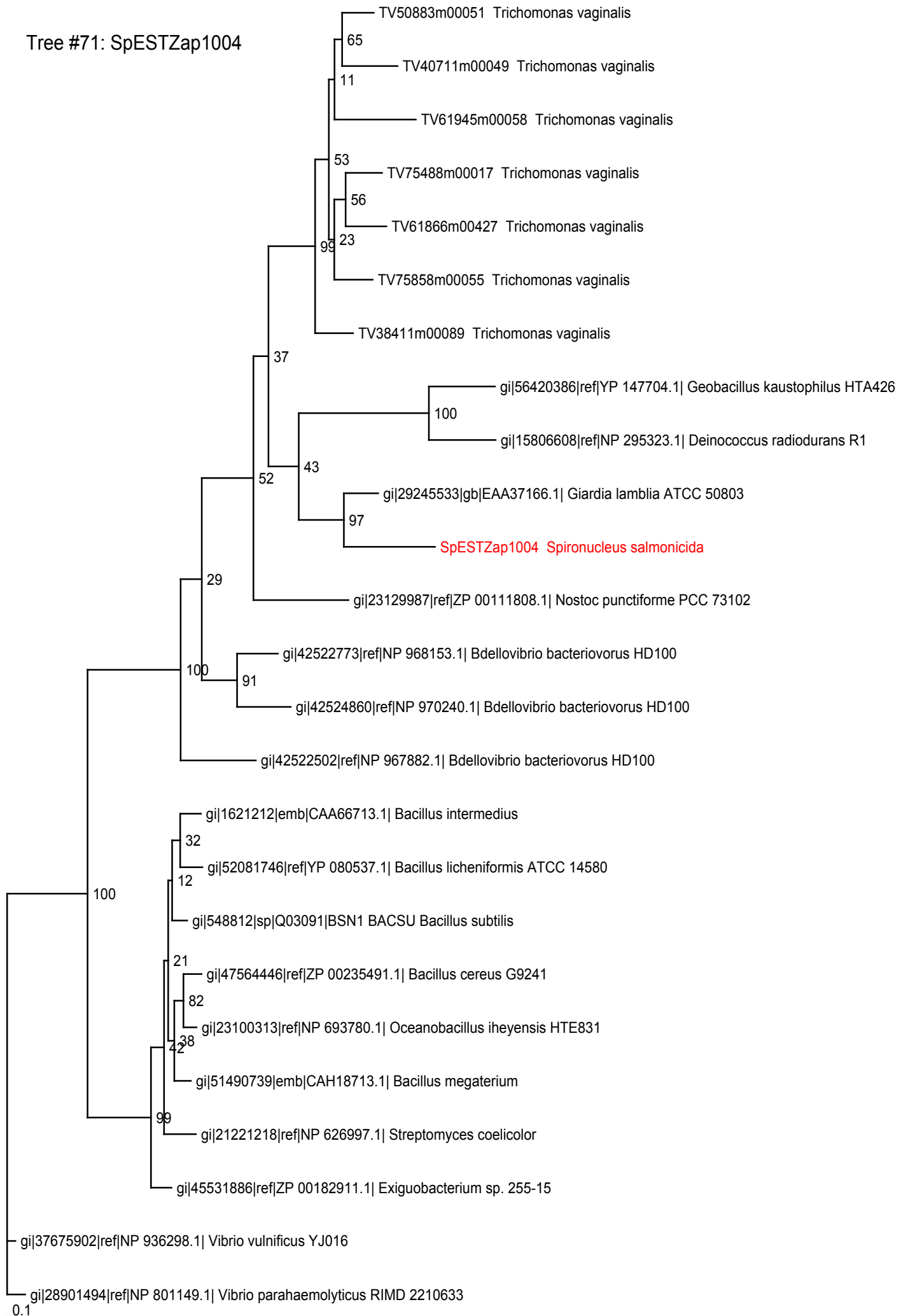
Tree #69: gZar978gT3,
gZar789bT7



Tree #70: Sp11orf4



Tree #71: SpESTZap1004



Tree #72: SpESTZap1248

