

These are electronic appendices to the Biology Letter by Koehler *et al.* 2004 How well does second-to-fourth-digit ratio in hands correlate with other indications of masculinity in males? *Proc. R. Soc. Lond. B (Suppl.)* **271**, S286–S289. (DOI 10.1098/rsbl.2004.0163.)

Electronic appendices are refereed with the text. However, no attempt has been made to impose a uniform editorial style on the electronic appendices.

Electronic Appendix A

Table 2. Descriptive statistics of all variables assessed. Face and body ratings were made on a scale from 1-7 (1 = not masculine, 7 = very masculine).

	<u>N</u>	<u>M</u>	<u>SD</u>
average left 2D : 4D males	94	0.96	0.03
average right 2D : 4D males	94	0.96	0.03
average left 2D : 4D females	100	0.97	0.03
average right 2D : 4D females	100	0.98	0.04
body masculinity rated by males	93	4.53	0.75
body masculinity rated by females	93	4.32	1.01
face masculinity rate by males	88	4.78	0.69
face masculinity rate by females	88	4.40	0.91
left testis volume (cm ³)	43	24.2	18.5
right testis volume (cm ³)	43	23.1	12.9
factor score	88	0.63	0.84

Electronic Appendix B

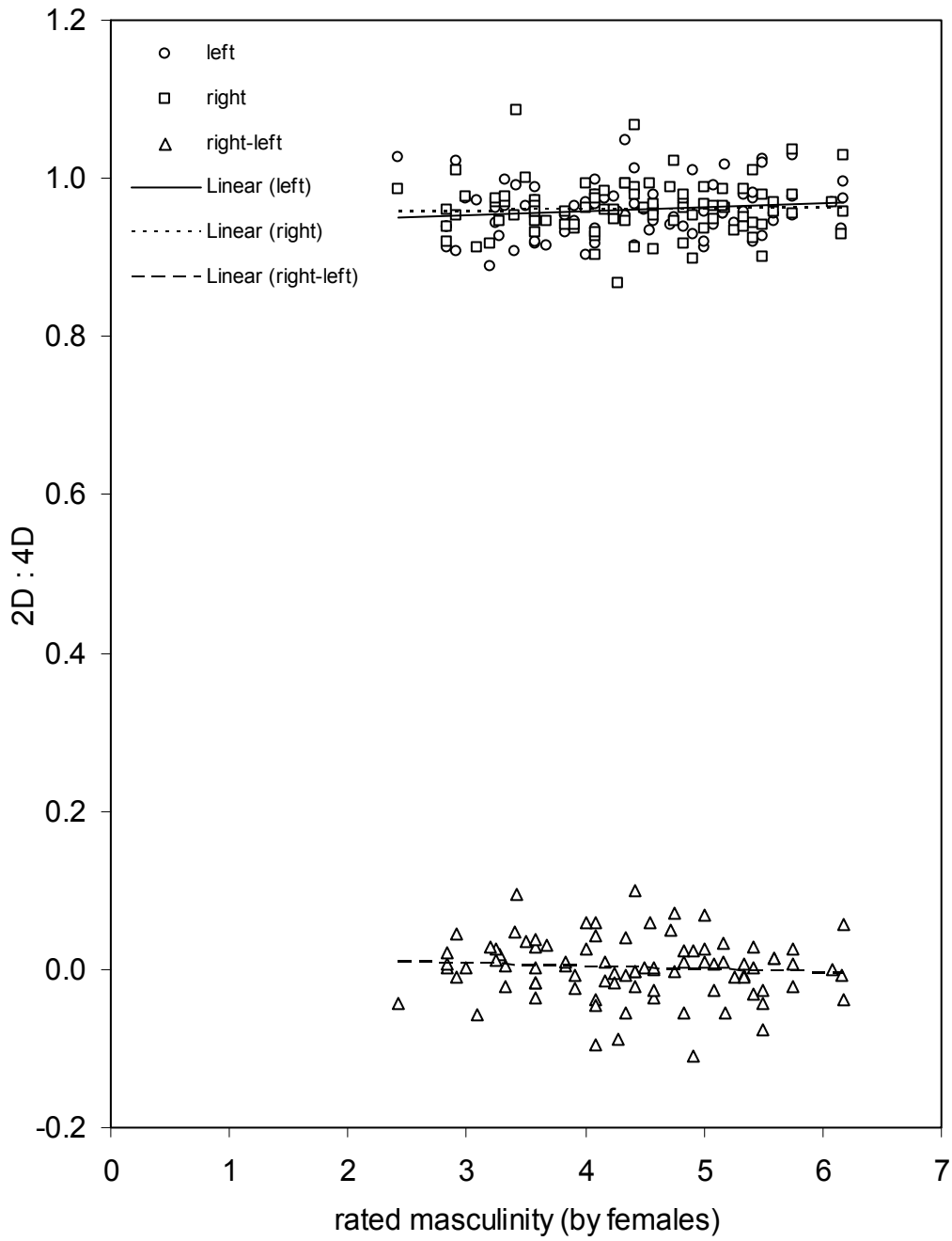


Figure 1. Relationships between rated facial masculinity (by females) and left average 2D : 4D, right average 2D : 4D and right average 2D : 4D - left average 2D : 4D for male participants (N = 88).

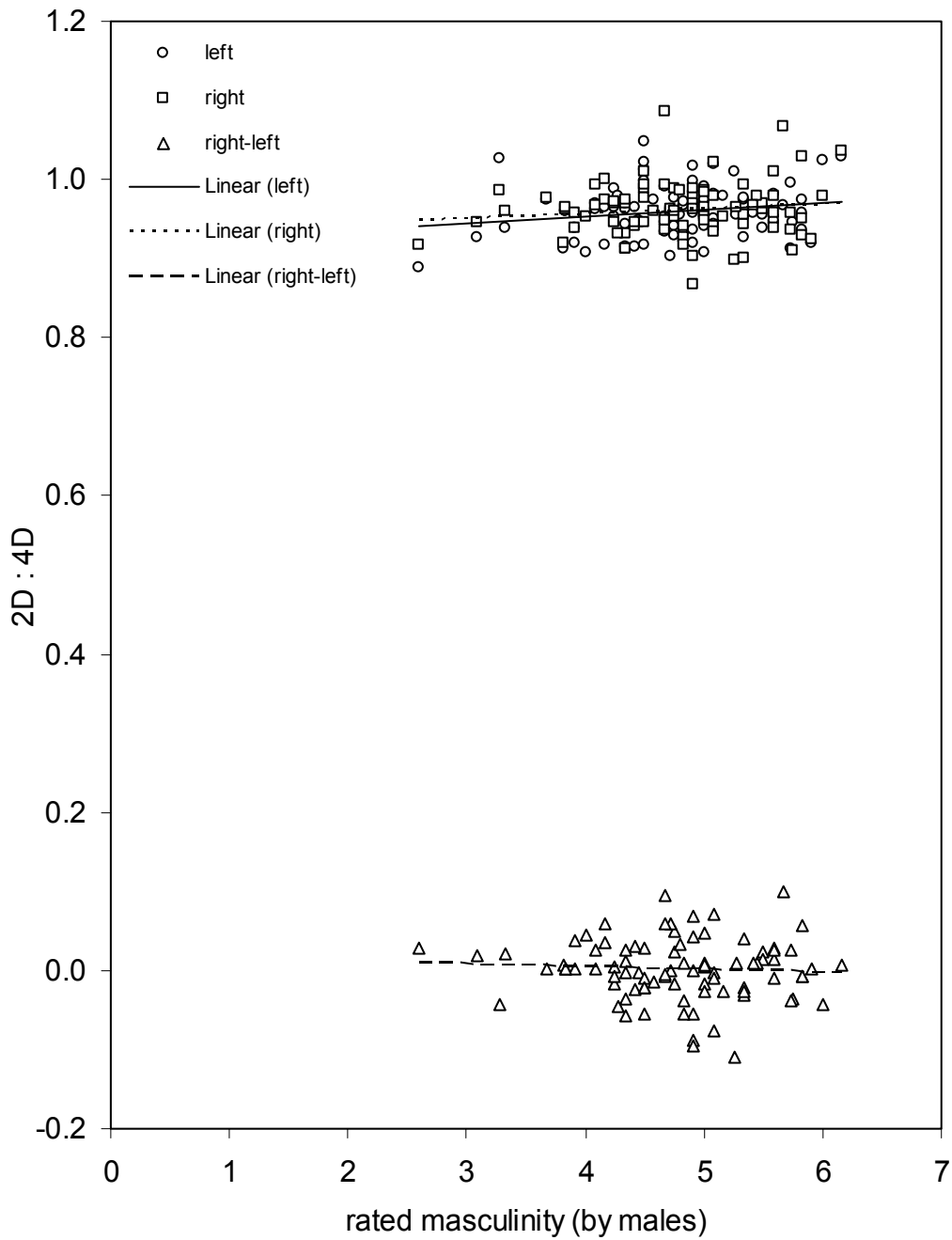


Figure 2. Relationships between rated facial masculinity (by males) and left average 2D : 4D, right average 2D : 4D and right average 2D : 4D - left average 2D : 4D for male participants (N = 88).