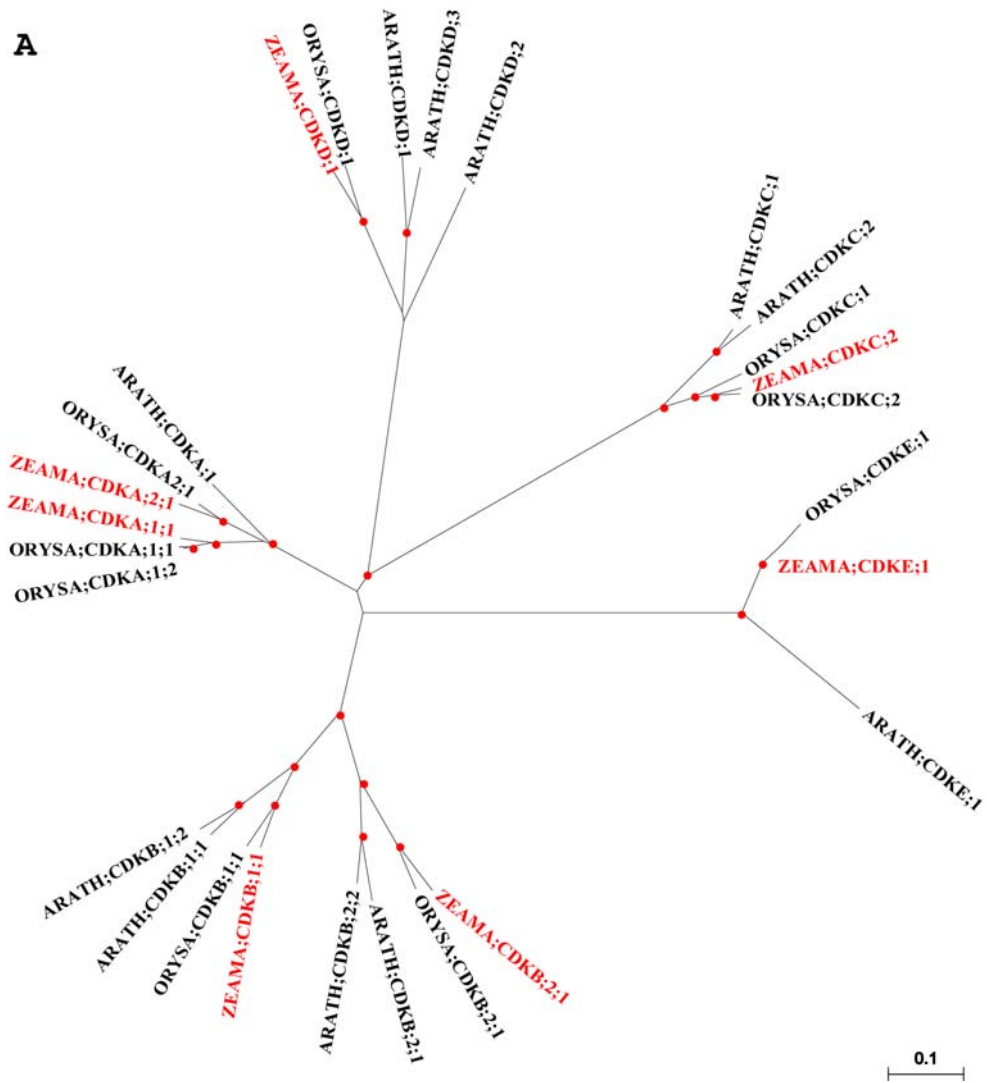
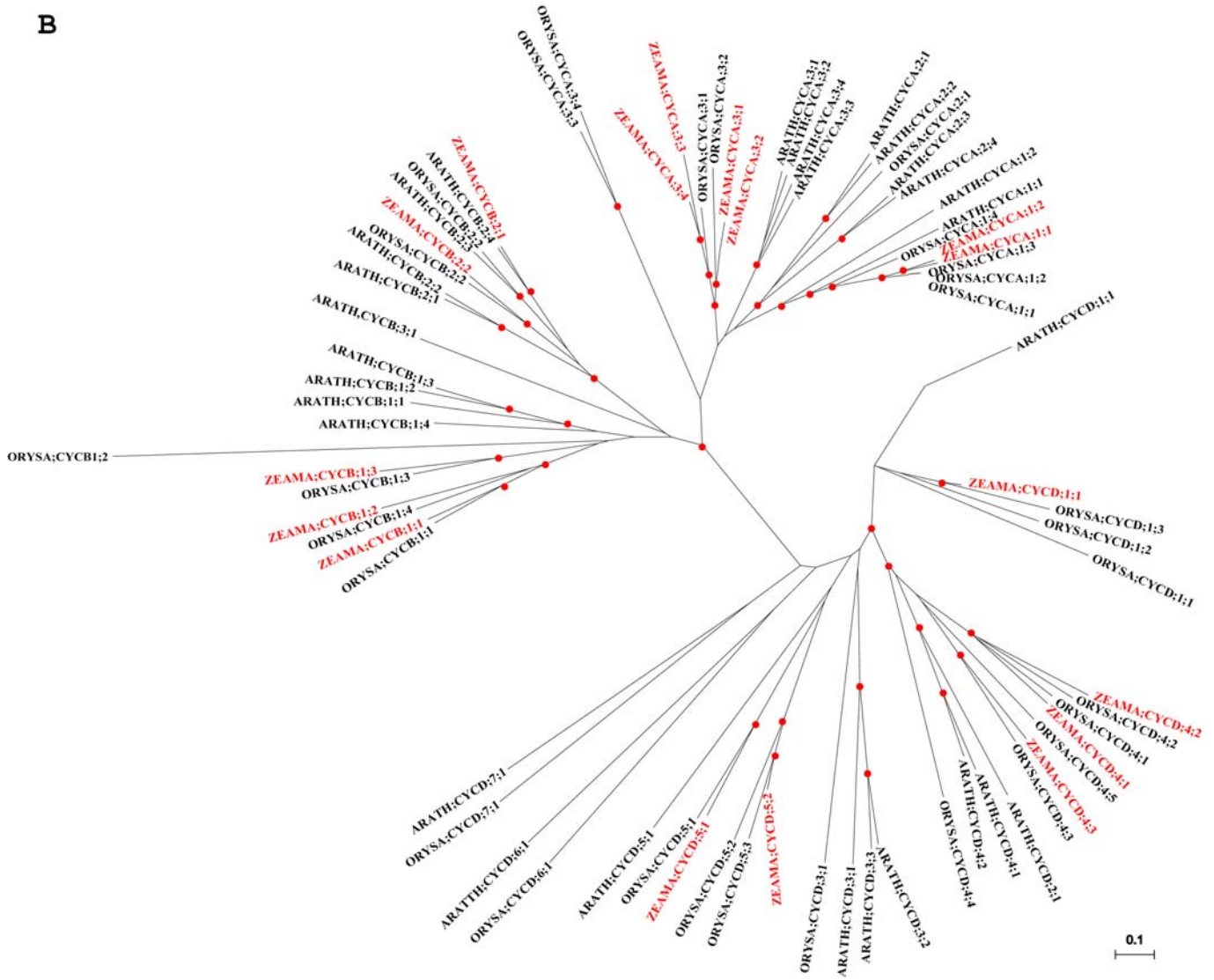


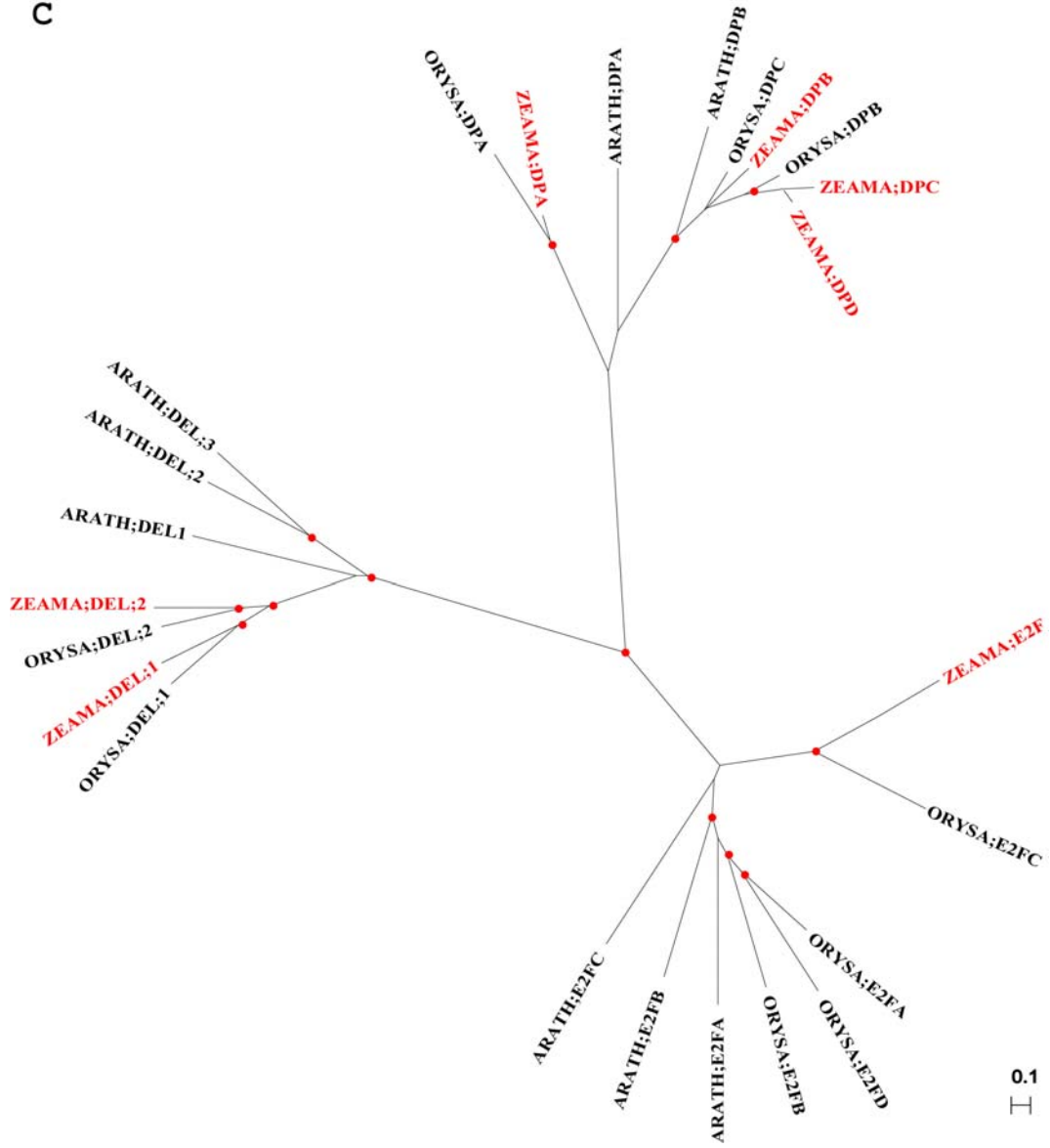
**A**



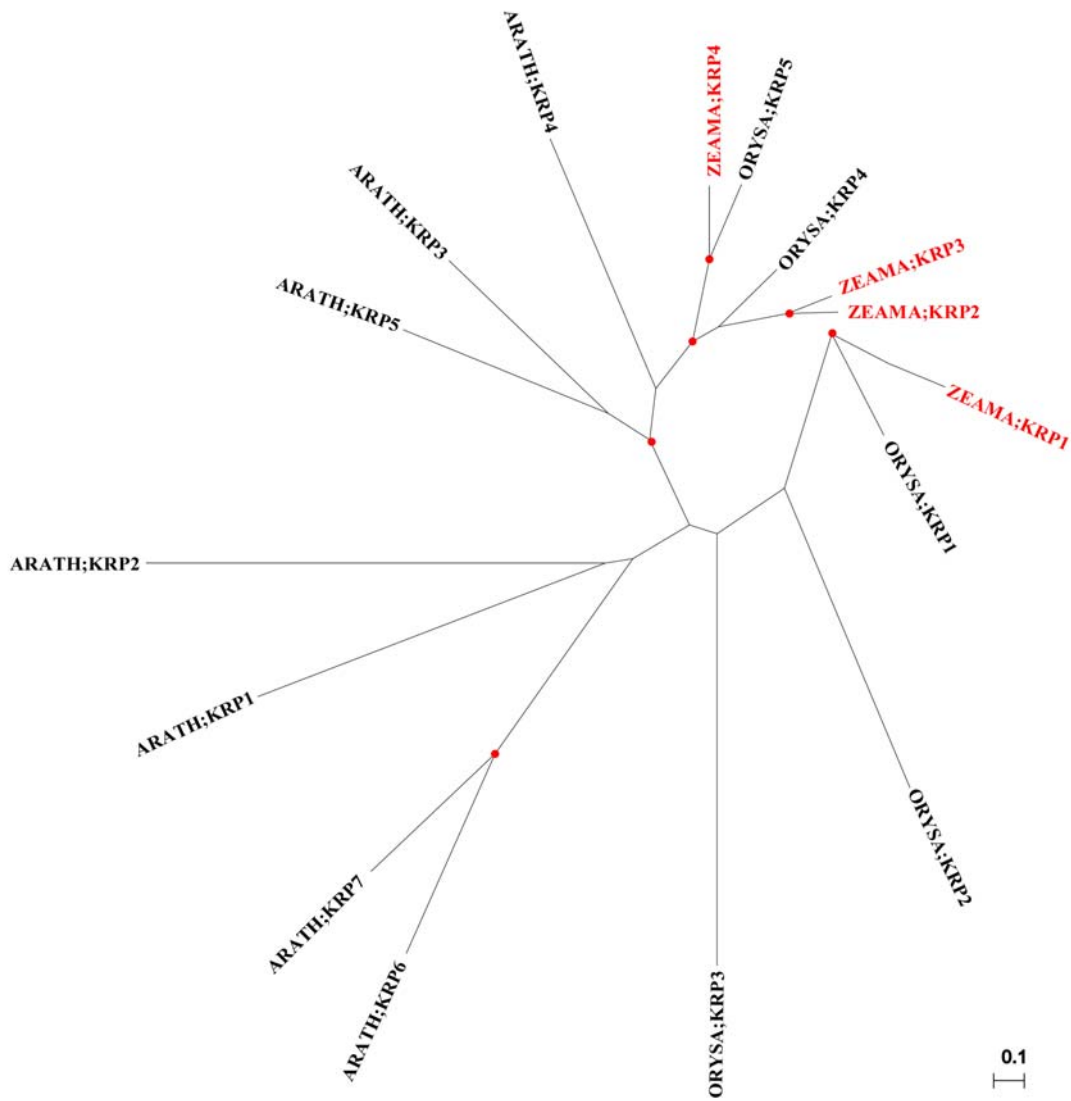
B



C



D



Supplemental figure 2: Phylogenetic comparison of the maize, Arabidopsis and rice cell cycle genes.

Unrooted Neighbor-Joining trees with the Poisson correction for evolutionary distance calculation of the A, B, C, D, and E types of CDKs (A) the A, B and D type cyclins (B) the E2F, DP and DEL classes (C) and the KRPs (D). Nodes with a bootstrap value >95 based on 100 iterations are indicated in red. Scales indicate the evolutionary distance. ARATH, Arabidopsis; ORYSA, rice (*Oryza sativa*) and ZEAMA, maize (*Zea mays*).