

Table W1. Supplementary PET Clinical-Pathological Data and *ARHI* mRNA Expression.

Sample	Tumor Type	Diagnosis	Follow-up (months)	Progression*	TTP* (months)	Outcome	Ki67 (%)	<i>ARHI</i> $\Delta\Delta Ct^\dagger$
1	NF	WDEC	58	Yes	52	DOD	5	12.24
2	NF	PDEC	12	Yes	6	DOD	30	6.61
3	NF	WDEC	73	Yes	36	AWD	10	7.94
4	NF	WDET	88	No		AW	2	10.87
5	NF	WDEC	49	Yes	22	AWD	8	4.49
6	F	WDET	50	No		AW	2	10.31
7	F	WDEC	25	Yes	12	DOD	17	10.10
8	NF	WDET	89	No		AW	2	11.33
9	NF	WDEC	71	Yes	14	DOD	7	4.09
10	NF	WDET	48	No		AW	2	10.53
11	NF	WDEC	31	Yes	8	AWD	5	2.74
12	NF	WDEC	58	No		AW	3	13.57
13	F	WDET	48	No		AW	1	10.65
14	NF	WDEC	32	Yes	25	AWD	3	11.40
15	NF	PDEC	6	Yes	6	DOD	40	6.10
16	NF	WDEC	38	No		AW	2	10.36
17	NF	WDEC	91	Yes	36	DOD	2	11.47
18	NF	WDEC	37	No		AW	5	11.51
19	F	WDET	47	No		AW	1	10.50
20	NF	WDET	76	No		AW	1	10.71
21	NF	WDET	66	No		DOC	2	10.83
22	F	WDEC	45	No		AW	3	9.13
23	NF	WDET	25	No		AW	2	9.37
24	NF	WDET	22	No		AW	2	8.53
25	NF	WDET	30	No		AW	1	10.24
26	NF	WDEC	38	No		AW	2	11.48
27	NF	WDET	43	No		AW	2	13.22
28	NF	WDEC	na	na	na	na	2	7.09
29	NF	WDEC	45	No		AW	5	12.56
30	NF	WDET	162	No		AW	1	11.32
31	NF	WDEC	32	No		AW	2	3.91
32	NF	WDEC	68	Yes	24	DOD	17	11.13
33	NF	WDEC	76	No		AW	2	5.82
34	NF	WDET	56	No		AW	2	12.65
35	NF	PDEC	13	Yes	4	DOD	25	4.77
36	NF	WDEC	4	Yes	2	DOD	1	11.61
37	F	WDET	55	No		AW	2	10.84
38	F	WDET	200	No		AW	2	11.83
39	NF	WDEC	55	Yes	36	DOD	5	9.45
40	NF	WDET	60	No		AW	1	3.01
41	NF	WDEC	na	na	na	na	2	3.27
42	NF	PDEC	13	Yes	7	DOD	40	0.00
43	NF	WDEC	55	Yes	24	DOD	2	5.38
44	NF	WDET	164	No		AW	5	13.32
45	NF	WDEC	3	No		DOC	3	5.10
46	NF	WDET	135	No		AW	1	11.06
47	F	WDET	35	No		AW	2	11.54
48	NF	WDET	22	No		AW	2	10.66
49	NF	WDEC	53	No		AW	2	6.52
50	NF	WDEC	104	Yes	104	AW	3	12.28
51	NF	WDEC	91	Yes	49	AWD	2	13.68
52	NF	WDET	na	na	na	na	1	8.29

NF, nonfunctioning; F, functioning; WDET, well-differentiated endocrine tumor; WDEC, well-differentiated endocrine carcinoma; PDEC: poorly differentiated endocrine carcinoma; na, not available; AW, alive and well; AWD, alive with disease; DOD, dead of disease; DOC, dead of other cause.

*Time to progression calculated as the interval from surgery to disease progression.

$\dagger \Delta\Delta Ct_{ARHI} = |\Delta Ct_{ARHI} - \max(\Delta Ct_{ARHI})|$, where Ct_{ARHI} and $Ct_{\beta\text{-actin}}$ represent the comparative threshold cycle for *ARHI* and β -actin, respectively.

Table W2. *ARHI* mRNA Expression in Normal Pancreatic Bulk Tissues and Islets.

Sample*	<i>ARHI</i> $\Delta\Delta Ct^\dagger$
N1	11.06
N2	9.07
N3	9.39
N4	9.41
N5	9.47
N6	9.58
N7	9.69
N8	9.81
N9	10.11
N10	10.26
N11	10.44
N12	11.81
I1	8.09
I2	12.01
I3	8.14
I4	8.71

*N1 to N12: normal pancreatic bulk tissues; I1 to I4: normal pancreatic islets.
 $\dagger \Delta\Delta Ct_{ARHI} = \left| \left| \Delta Ct_{ARHI} - \max(\Delta Ct_{ARHI}) \right| \right|$, where Ct_{ARHI} and $Ct_{\beta\text{-actin}}$ represent the comparative threshold cycle for *ARHI* and β -actin, respectively.

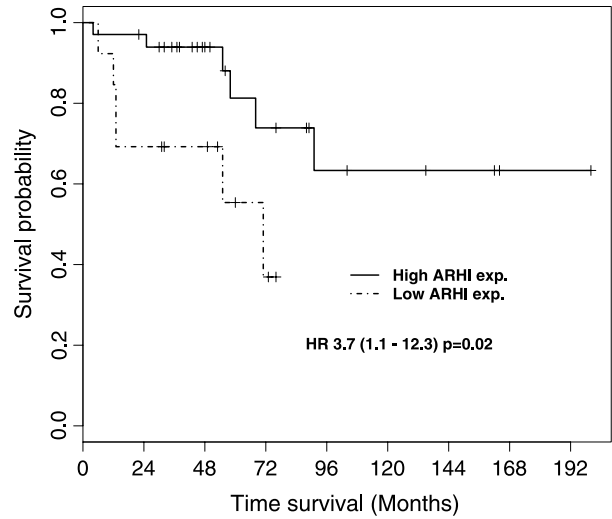


Figure W1.

Table W3. *ARHI* and Ki67 Expression in Relation to Tumor Category and Outcome.

	No. of patients*	Mean Ki67 (%)	Mean <i>ARHI</i> $\Delta\Delta Ct^\dagger$	Outcome (DOD) [‡]
WDET	20	2	10.62	0/20
WDEC	23	5	9.25	8/23
PDEC	4	34	4.37	4/4

*Only patients with survival data available are included.
 $\dagger \Delta\Delta Ct_{ARHI} = \left| \left| \Delta Ct_{ARHI} - \max(\Delta Ct_{ARHI}) \right| \right|$, where Ct_{ARHI} and $Ct_{\beta\text{-actin}}$ represent the comparative threshold cycle for *ARHI* and β -actin, respectively.
 \ddagger Outcome: number of patients dead of disease (DOD).

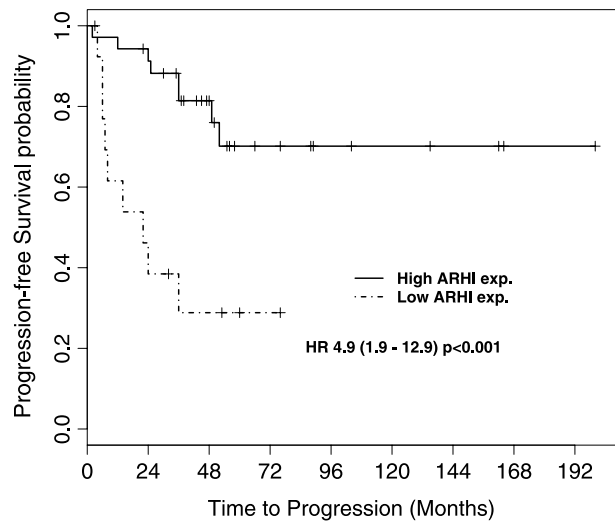


Figure W2.