

SUPPLEMENTARY FIGURE LEGENDS

Figure S1. Profile of total lipid extractions. Lipids were separated using a normal phase HPLC column and detected by mass spectrometry in the negative mode. **(a)** Skin lipids from wild type (top) and *nm1054* (bottom) mice. **(b)** Hair lipids from wild type (top) and *nm1054* (bottom) mice. PI: phosphatidylinositol.

Figure S2. Negative mode mass spectra of skin lipids separated in Figure S1. **(a)** Wild type skin lipid spectra. **(b)** *nm1054* skin lipid spectra. Alkane series identified by retention time (minutes) correspond to major peaks in Figure S1. PI corresponds to the deprotonated form (C18:0 and C20:4 fatty acids).

Figure S1.

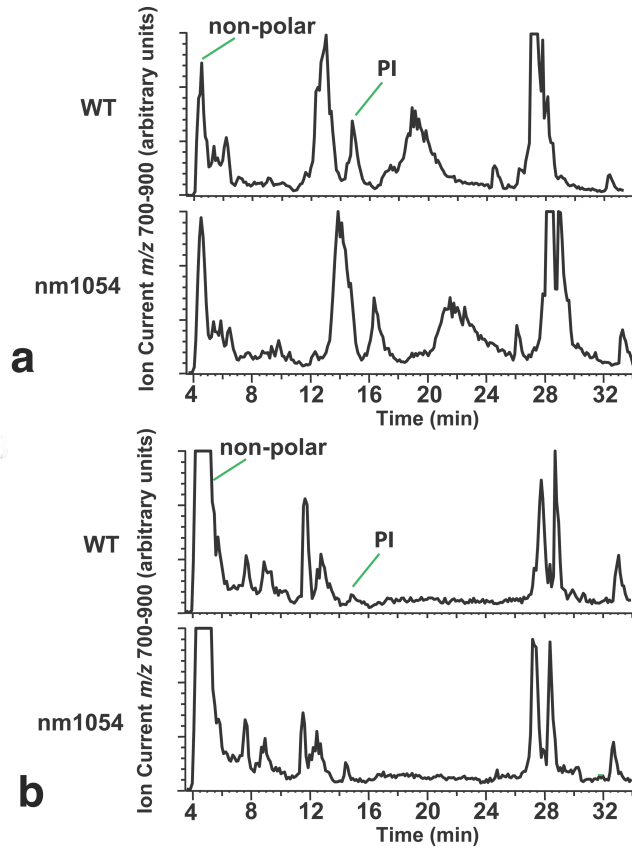


Figure S2.

