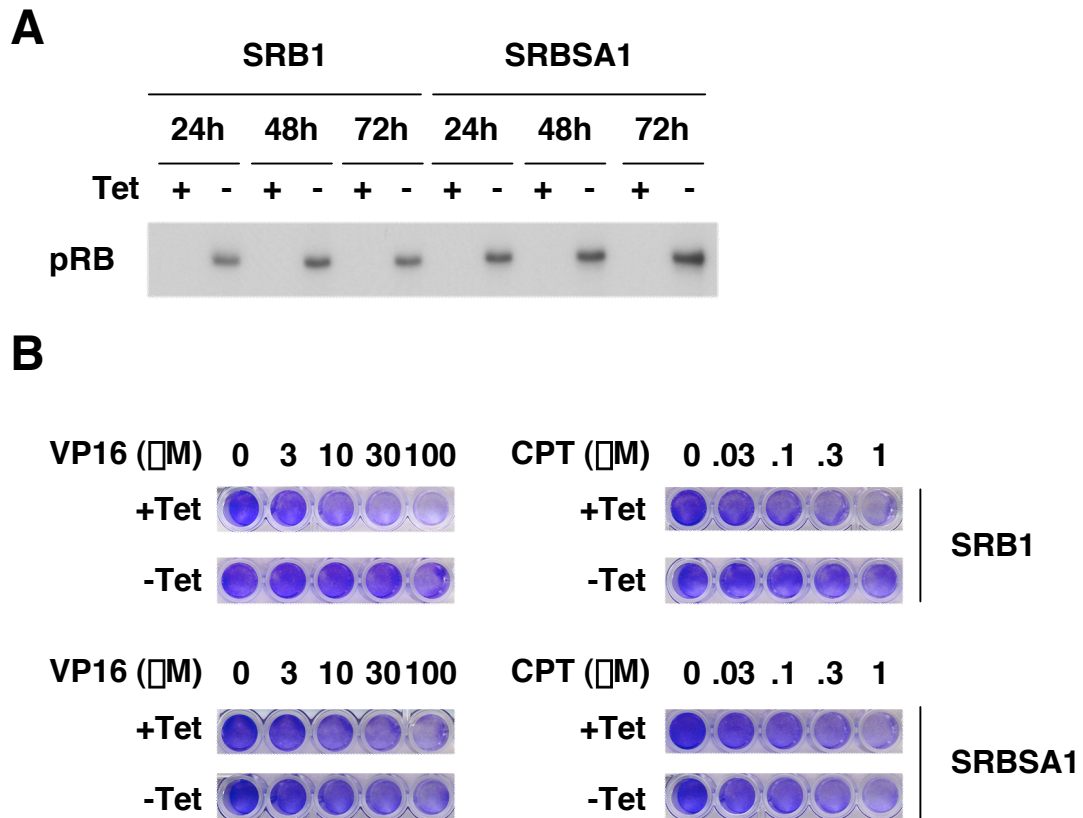


Supplementary Figure S2



(A) Time course of wild-type pRB and pRB S612A induction. SRB1 cells and SRBSA1 cells were incubated with or without 1 μg/ml of tetracycline (Tet). Cells were harvested at the indicated periods and cell lysates were immunoblotted with anti-pRB antibody.

(B) Images correspond to Figure 4C. Crystal violet stained cells are shown.