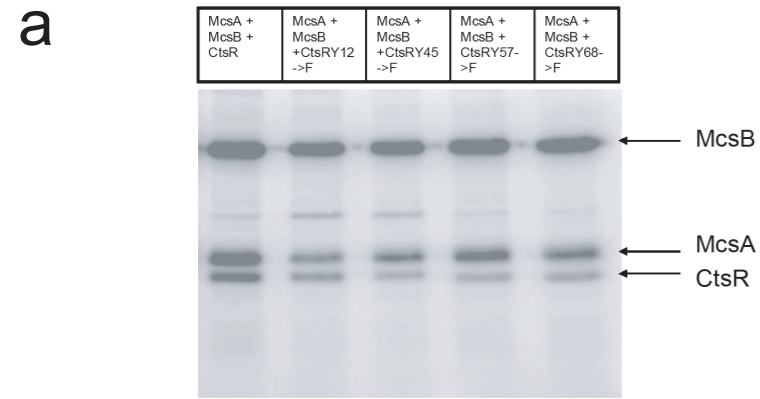
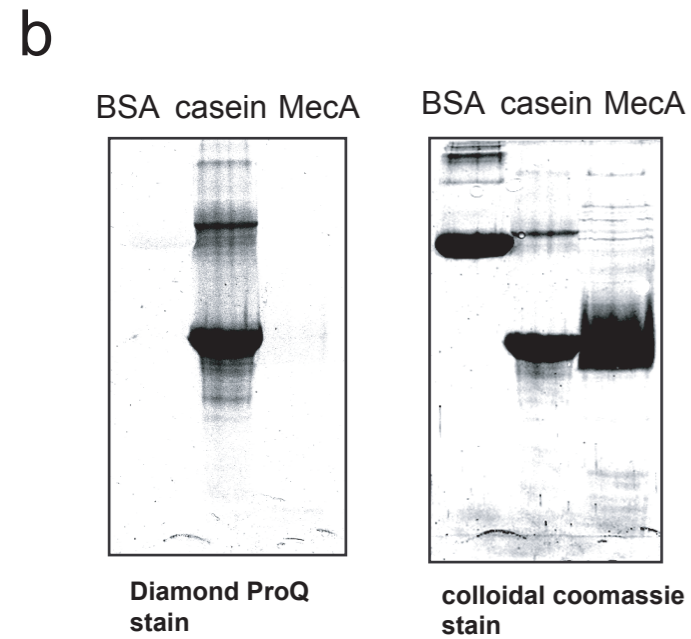


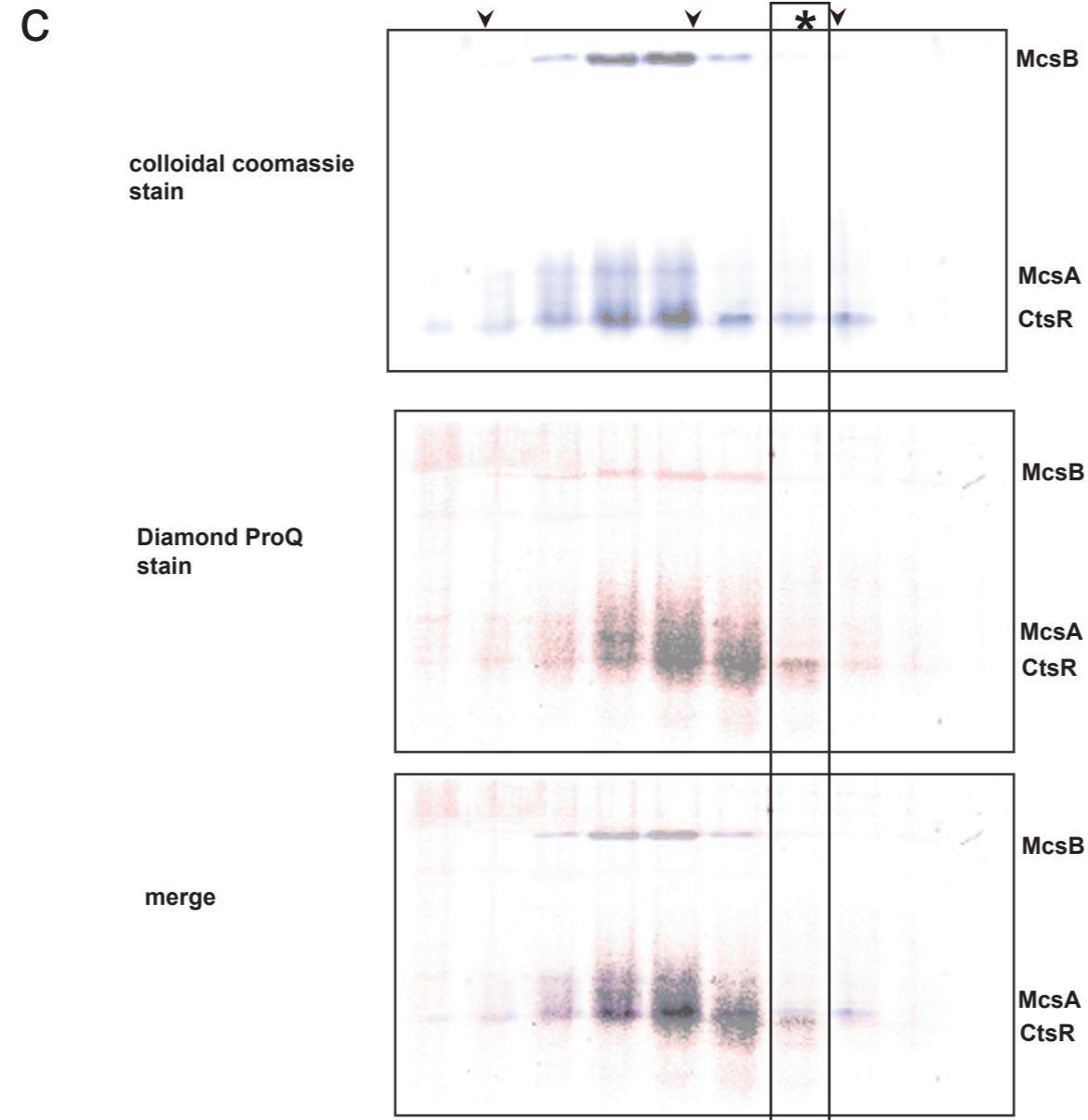
supplementary Figure CtsR phosphorylation



Phosphorylation of the single tyrosine mutation variants of CtsR. The Autoradiogram of the kinase assay with McsB, McsA, CtsR or the CtsR variants is depicted.



BSA, α -Casein and MecA separated by SDS-PAGE and sequentially stained with Diamond ProQ (Phospho-protein) and colloidal coomassie (protein)



Fractions from the Gelfiltration of McsB, McsA, CtsR incubated in the presence of ATP, separated by SDS-PAGE and stained. The indicated Fraction was used for the experiment depicted in Fig 2d.