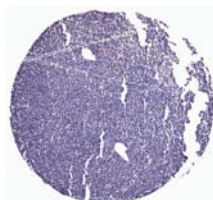
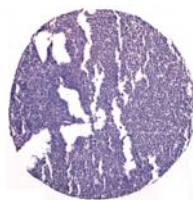


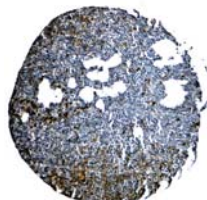
Normal Lymph Node



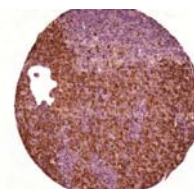
CLL/SLL (-)



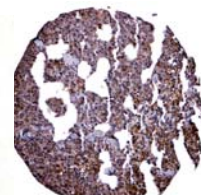
Follicular Lymphoma
WHO Grade I (-)



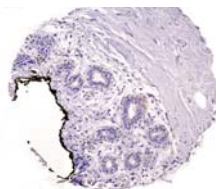
Follicular Lymphoma
WHO Grade III



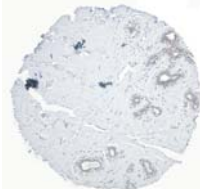
DLBCL



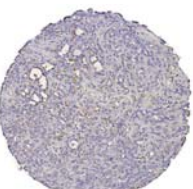
Anaplastic Large
Cell Lymphoma



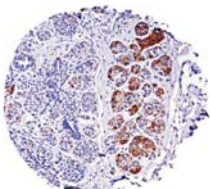
Normal Breast



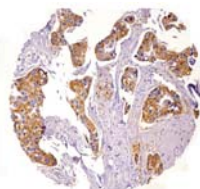
Normal Breast



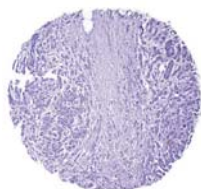
Breast Ductal
Papilloma



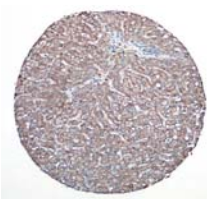
Breast Cancer
In Situ



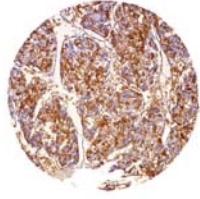
Breast Ductal
Cancer



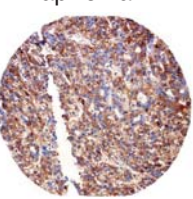
Breast Lobular
Cancer (-)



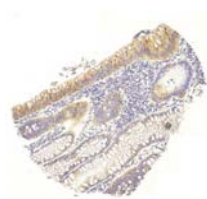
Normal Liver



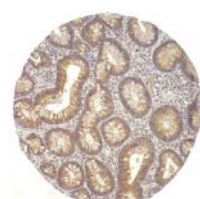
Hepatic Carcinoma



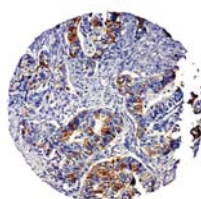
Hepatoblastoma



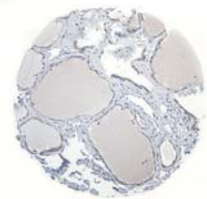
Normal Colon



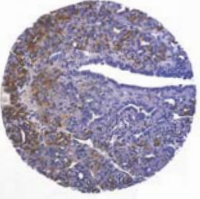
Colon Adenoma



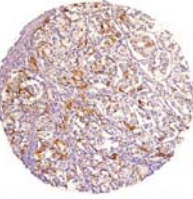
Colon Cancer



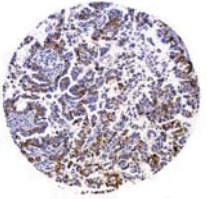
Normal Thyroid



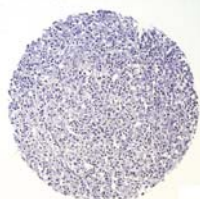
Thyroid Papillary
Cancer



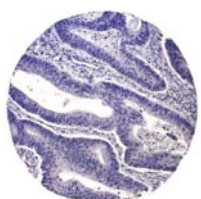
Thyroid Follicular
Cancer



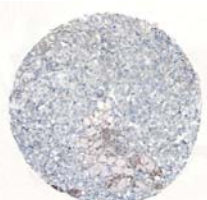
Lung
Adenocarcinoma



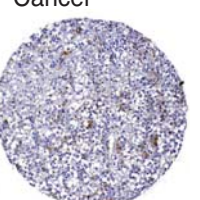
Gastric Cancer (-)



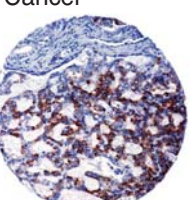
Colon Cancer (-)



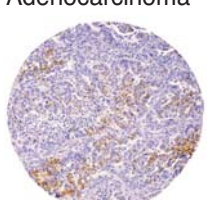
Normal Adrenal



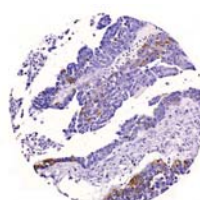
Adrenocortico-
carcinoma



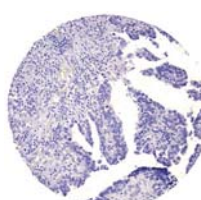
Prostate Cancer



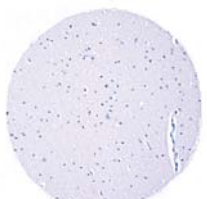
Ovary Endometrial
Cancer



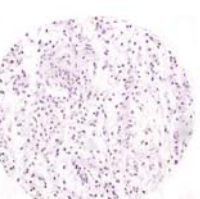
Ovary Papillary
Serrous Cancer



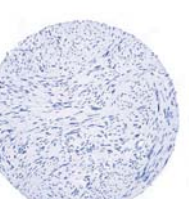
Ovary Papillary
Serrous Cancer (-)



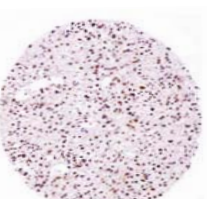
Normal Brain (-)



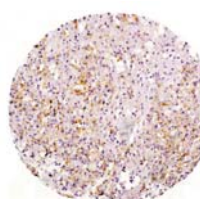
Pilocytic Astrocytoma (-)



Schwannoma (-)



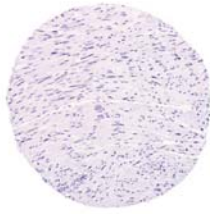
Oligodendroglioma



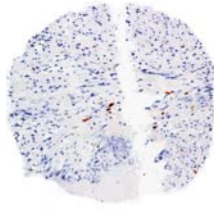
Glioblastoma



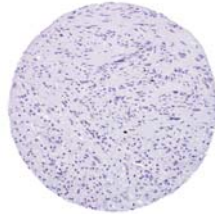
Retinoblastoma



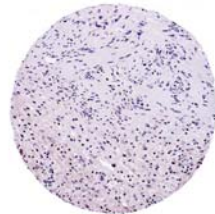
Schwannoma
Emi1 -



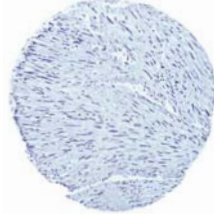
Schwannoma
Ki67 +



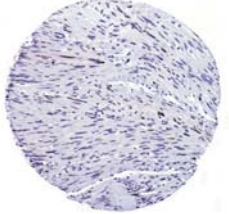
Schwannoma
Cyclin A rare +



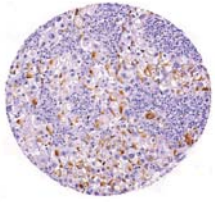
Schwannoma
Cdh1 -



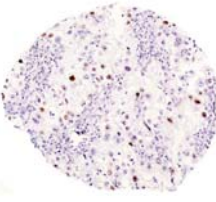
Schwannoma
Skp2 -



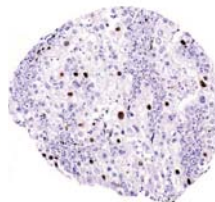
Schwannoma
p27 +



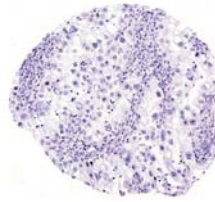
Ovary Clear Cell
Emi1 +



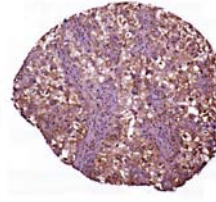
Ovary Clear Cell
Cyclin E +



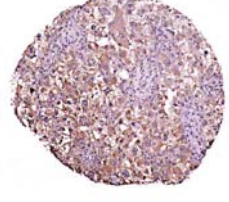
Ovary Clear Cell
Cyclin A +



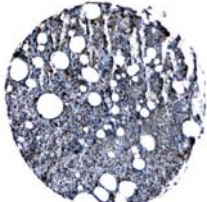
Ovary Clear Cell
phos-pRb +



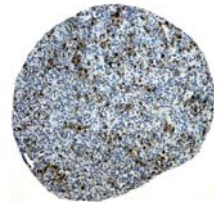
Ovary Clear Cell
Cdh1 +



Ovary Clear Cell
Plk1 +



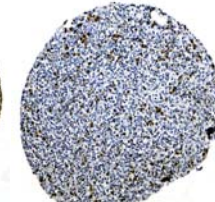
DLBCL
Emi1 +



DLBCL
Securin +



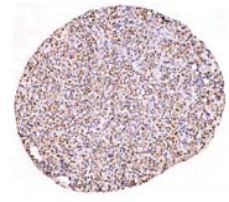
DLBCL
Cdh1 +



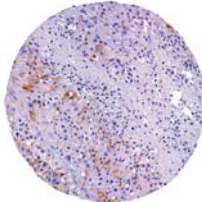
DLBCL
Cyclin A +



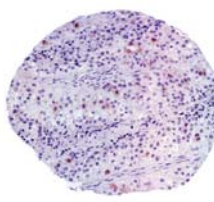
DLBCL
beta-Catenin +



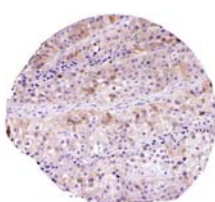
DLBCL
E2F3 +



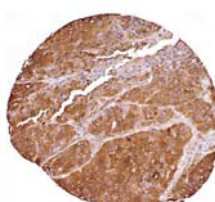
Melanoma
Emi1 +



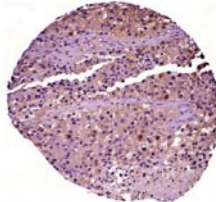
Melanoma
Aurora A +



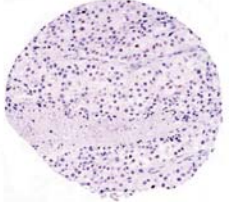
Melanoma
Securin +



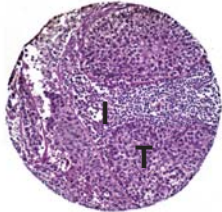
Melanoma
Cyclin D1 +



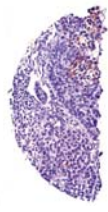
Melanoma
Cdh1 +



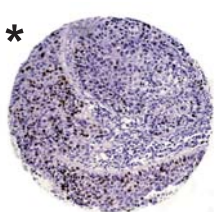
Melanoma
Cyclin E +



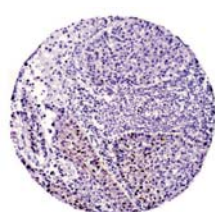
H&E SCC Tumor
& Inflammation



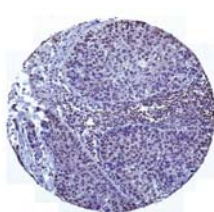
Tumor Emi1 +
Inflammation -



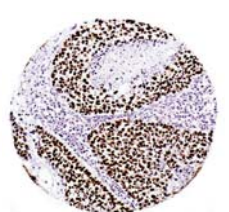
*
Tumor Ki67 +
Inflammation -



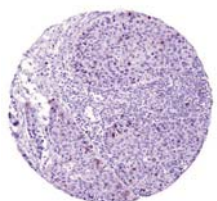
Tumor phos-pRb +
Inflammation +



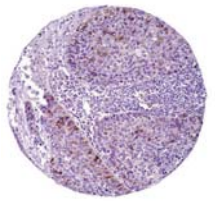
Tumor E2F3 +
Inflammation +



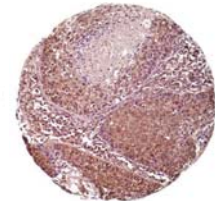
Tumor p53 +
Inflammation -



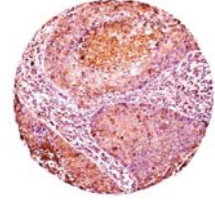
Tumor Cyclin A +
Inflammation -



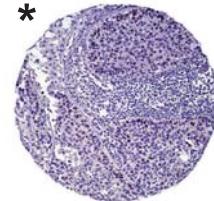
Tumor Securin +
Inflammation -



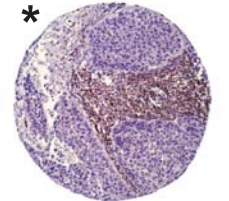
Tumor Plk1 +
Inflammation +/-



Tumor Cdh1 +
Inflammation -



*
Tumor Skp2 +
Inflammation -



*
Tumor p27 -
Inflammation +



Lung

Colon

Small Intestine

Liver

Kidney

Ovary

Breast

Skeletal Muscle



ES-2

SKOV3



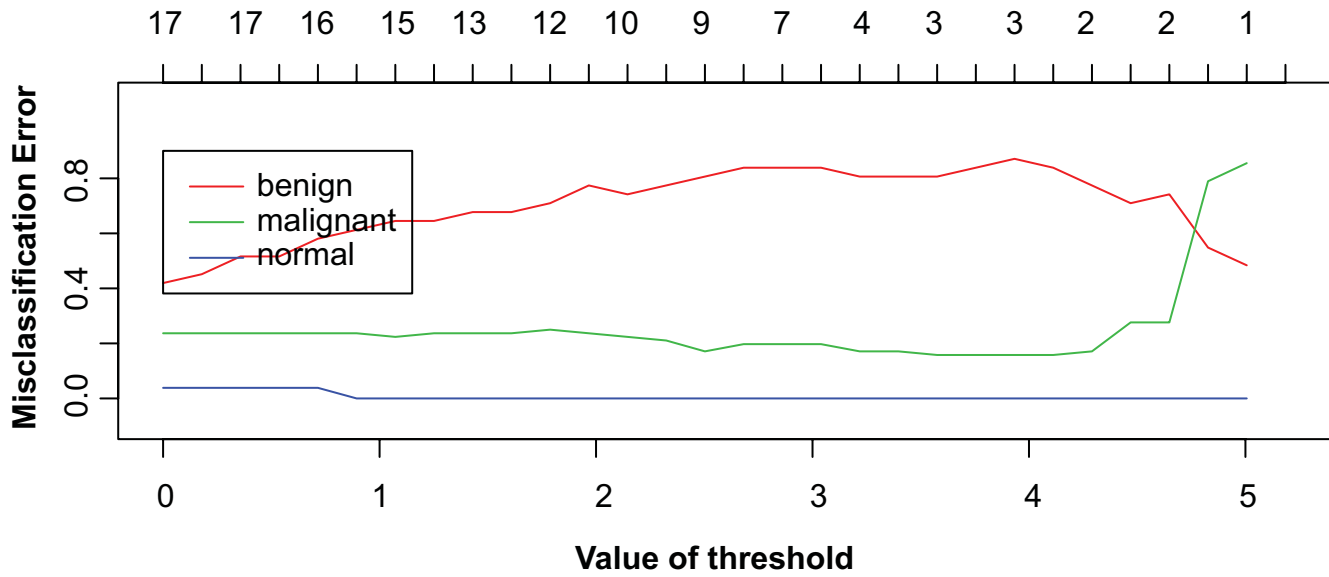
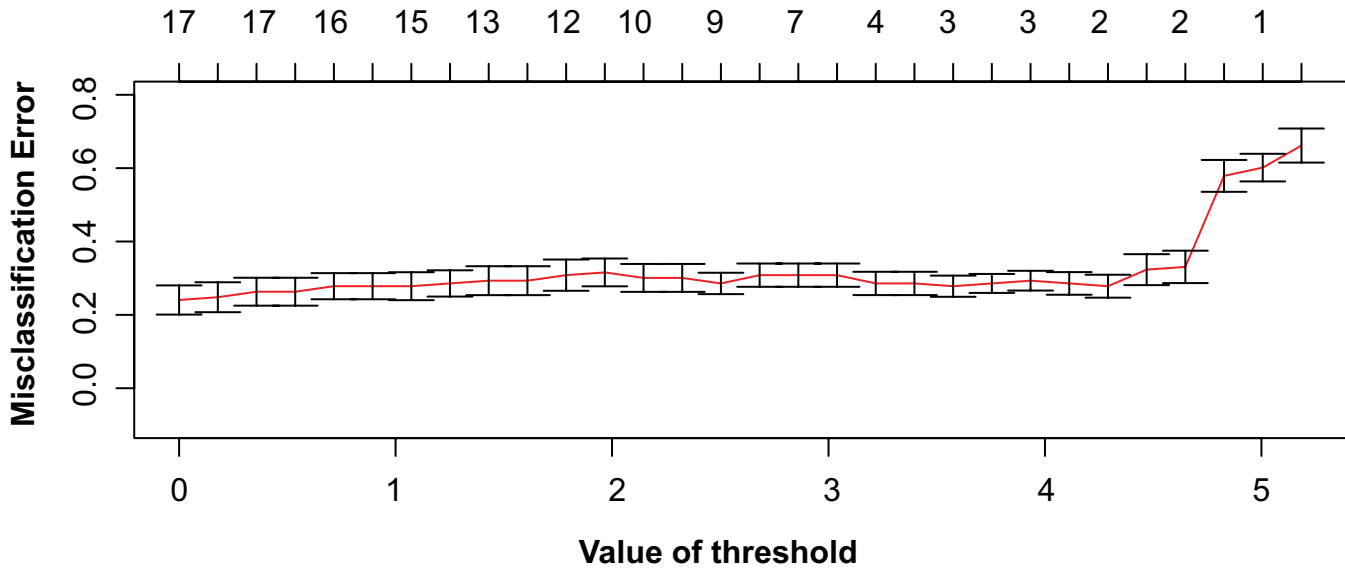
Clear Cell Ovarian Tumors



Non-Clear Cell Tumors

A. Neural TMA

Number of Protein Markers



B. Connective Tissue TMA

Number of Protein Markers

