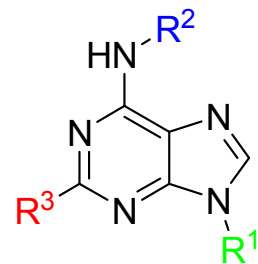


Entry	R ³	R ²	R ¹	EC ₅₀ (μM) ^a
1				3.1
2				4.6
3				0.5
4				> 7.1
5				> 7.1
6				> 7.1
7				> 7.1
8				1.7
9				1.5
10				0.6
11				0.4
12				> 7.1



a. The maximum concentration of the analogs that is tested is 7.1 μM.