

Supplementary Information
 Fig.1 Ootogawa *et al.*

	rabbit MFG-E8		human MFG-E8	480	TGTTGTGGAC	ACAAGGTGCC	AGCCGCGCGG
					*** ** **	** *****	***** **
					TGTGGT-GAC	GCAGGGTGCC	AGCCGCTTGG
	GCAGCGCTGA	GTACGTGAAG	ACCTTAAAGG		TGGCCTACAG	CTTGGATGGG	CGCAAGTTCC
	*** **	**** **	**** **		***** **	* * **	* * * **
510	CCAGTCATGA	GTACCTGAAG	GCCTTCAAGG		TGGCCTACAG	CCTTAATGGA	CACGAATTCC
	AGTTCATCCA	GGAAGCGGAC	GGGTCTGGAG		ACAAGGTGTT	TGCCGGTAAC	GTGGACAACA
	* *****	** *	*		***** **	** *****	* **** *
570	ATTTTCATCCA	TGATG--TT	AATAAAAAAC		ACAAGGAGTT	TGTGGGTAAC	TGGAACAAAA
	GTGGACTGAA	GACCAACCTG	TTGAGACCC		CTCTGGAGGC	ACAGTATGTG	CGGTGTGACC
	* ** *	*****	** ** *		** *****	***** **	* *****
628	ACGCGGTGCA	TGTCAACCTG	TTGAGACCC		CTGTGGAGGC	TCAGTACGTG	AGATTGTACC
	CCGTGACCTG	CCACCGGGGC	TGCACCCTCC		GCATGGAGCT	CCTGGGCTGT	GAGCTGAATG
	** * **	**** ** *	***** ** *		** * **	***** **	***** **
688	CCACGAGCTG	CCACACGGCC	TGCACTCTGC		GCTTTGAGCT	ACTGGGCTGT	GAGCTGAACG
	GATGCTCAGA	ACCCCTGGGC	CTAAAGGACA		ACACTATCCC	CGACAAGCAG	ATCACGGCCT
	***** * *	***** **	** ** * *		***** **	***** **	***** **
748	GATGCGCCAA	TCCCTGGGC	CTGAAGAATA		ACAGCATCCC	TGACAAGCAG	ATCACGGCCT
	CCAGCAGCTA	CAAGACCTGG	GGCTGCGTG		CCTTTGGCTG	GTATCCCTTC	TACGGGCGAC
	***** **	***** **	*** ** *		*** **	* * **	** * ** *
808	CCAGCAGCTA	CAAGACCTGG	GGCTGCGTG		TCTTCAGCTG	GAACCCCTCC	TATGCACGGC
	TGGACAAGCA	GGGCAAGTTC	AACGCCTGGA		CGGCCAGAG	TAATGACGCC	TCTGAGTGGC
	***** **	***** **	***** **		** **	* * *	* *****
868	TGGACAAGCA	GGGCAACTTC	AACGCCTGGG		TTGCGGGGAG	CTACGGTAAC	GATCAGTGGC
	TGCAGGTGGA	CCTGGGTTCC	CAAAGCGGG		TGACAGGCGT	CATCACCCAG	GGGGCTCGGG
	***** **	***** **	*** **		***** **	***** **	***** **
928	TGCAGGTGGA	CCTGGGTTCC	CAAAGCGGG		TGACAGGCGT	CATCACCCAG	GGGGCTCGGG
	ACTTTGGCCA	CATCCAGTAC	GTGGCAGCCT		ACAAGGTGGC	CCACAGCAAC	GATGGCCGGA
	***** **	***** **	***** **		***** **	* ** **	** * **
988	ACTTTGGCTC	TGTCCAGTTT	GTGGCAGCCT		ACAAGGTGGC	CCACAGCAAC	GATGGCCGGA
	ACTGGACCGA	GTACAAGGAA	CAGGGGGCCA		CGGACAGCAA	GGTTTCCCT	GCAACCCTGG
	***** **	**** **	* ** *		*** **	* * *****	* * * **
1048	ACTGGACTGA	GTACCAGGAC	CCCAGGACTG		GCAGCAGTAA	GATCTTCCCT	GGCAACTGGG
	ACAAC						
	**** *						
1106	ACAAC						

Figure S1.
 Comparison of rabbit and human MFG-E8 cDNA sequences.

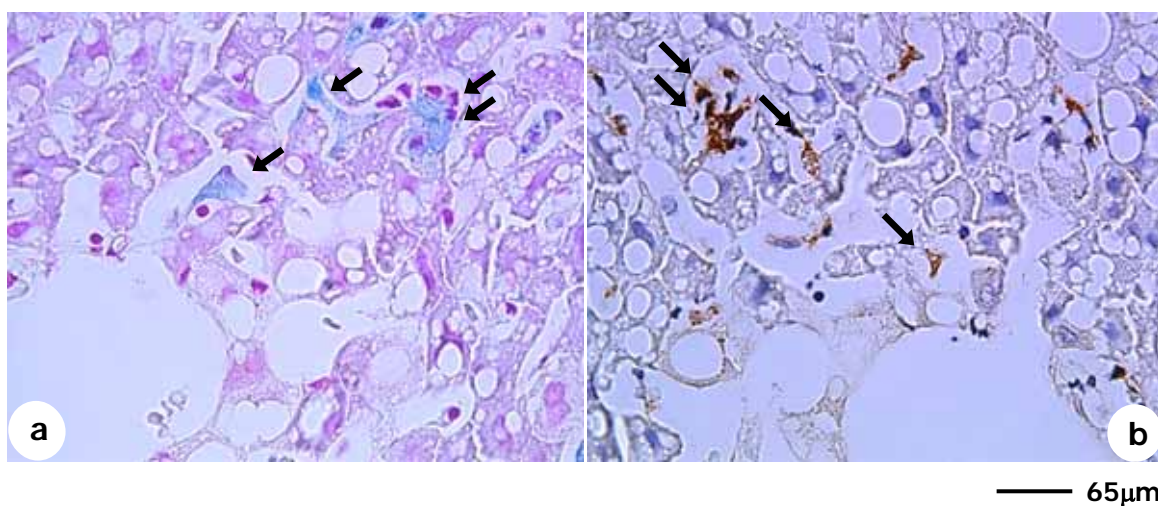


Figure S2.

Berlin blue staining (a) and immunostaining for RAM-11 (b) of HFD-fed rabbit liver. The specimen was sectioned transversally across the marked area. The photos were taken as "mirror images". Scale bar, 65 μm .

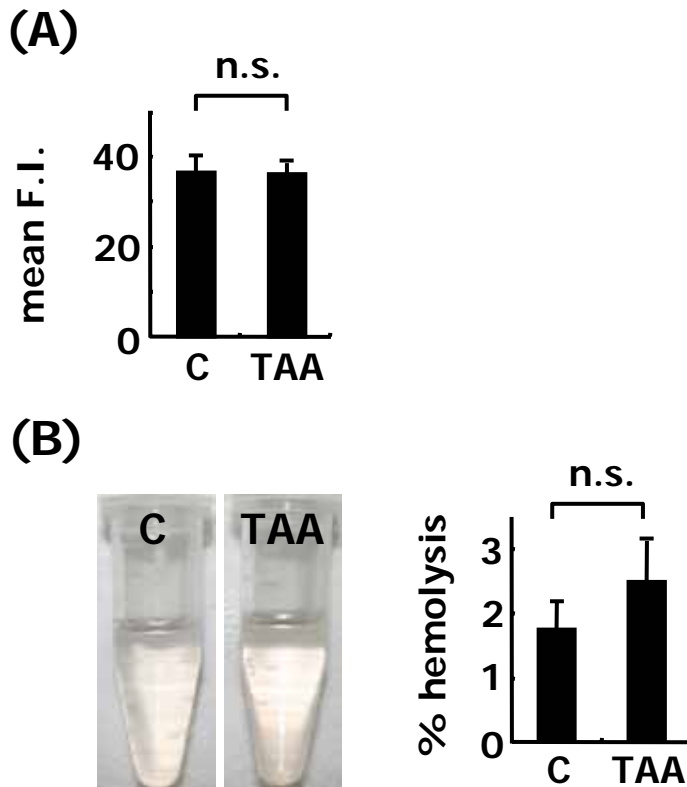


Figure S3.

(A) Externalization of phosphatidylserine in erythrocytes isolated from rabbits treated with 300 mg/kg of thiocetamide (TAA). Erythrocytes from control or TAA-treated rabbits were incubated with serum, and stained with FITC-conjugated annexin V. The FACS analysis was carried out using five independent samples, and the average values are plotted as bar graphs. Mean F.I.; mean fluorescence intensity. (B) Osmotic fragility of erythrocytes isolated from control or TAA-treated rabbits. A macroscopic view indicates no difference in fragility between erythrocytes from TAA-treated rabbits and those from control rabbits. Bar graphs present percent hemolysis with the maximal O.D. obtained at 100% hemolysis.