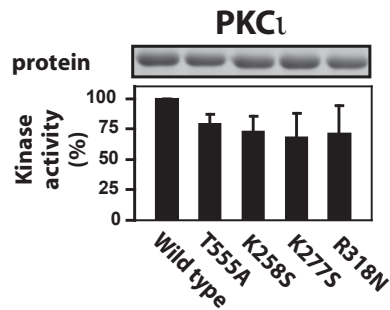


Supplementary Fig. 7



Supplementary Fig. 7. Effect of mutation of the tail site and the tail phosphate-binding site on the kinase activity of PKC ι . COS7 cells were transfected with plasmid expressing GST-tagged wt or mutant PKC ι . After 20 h the cells were lysed, and the kinases were precipitated from aliquots of the cell lysates with glutathione beads. The precipitates were subjected to kinase assay or stained for protein. Experiments were repeated at least 3 times and activity data (expressed as percent) are means \pm SD.