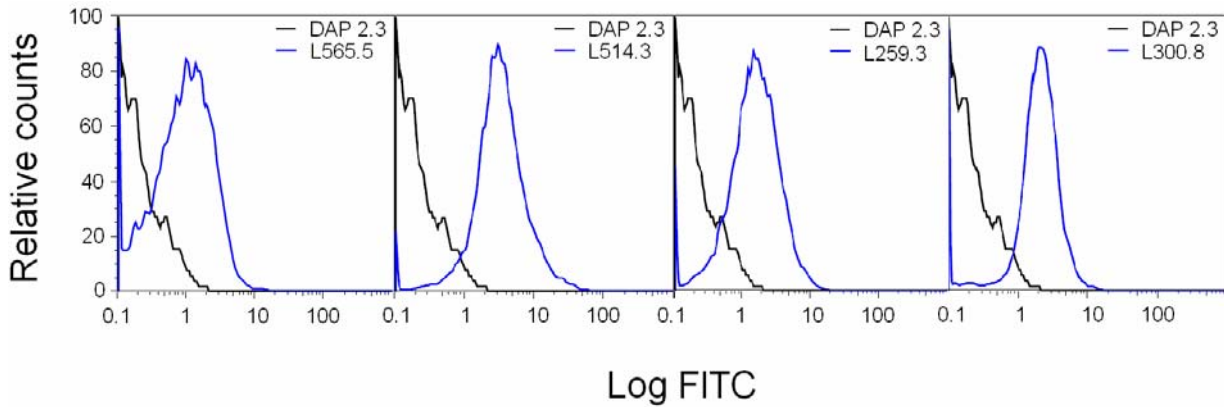
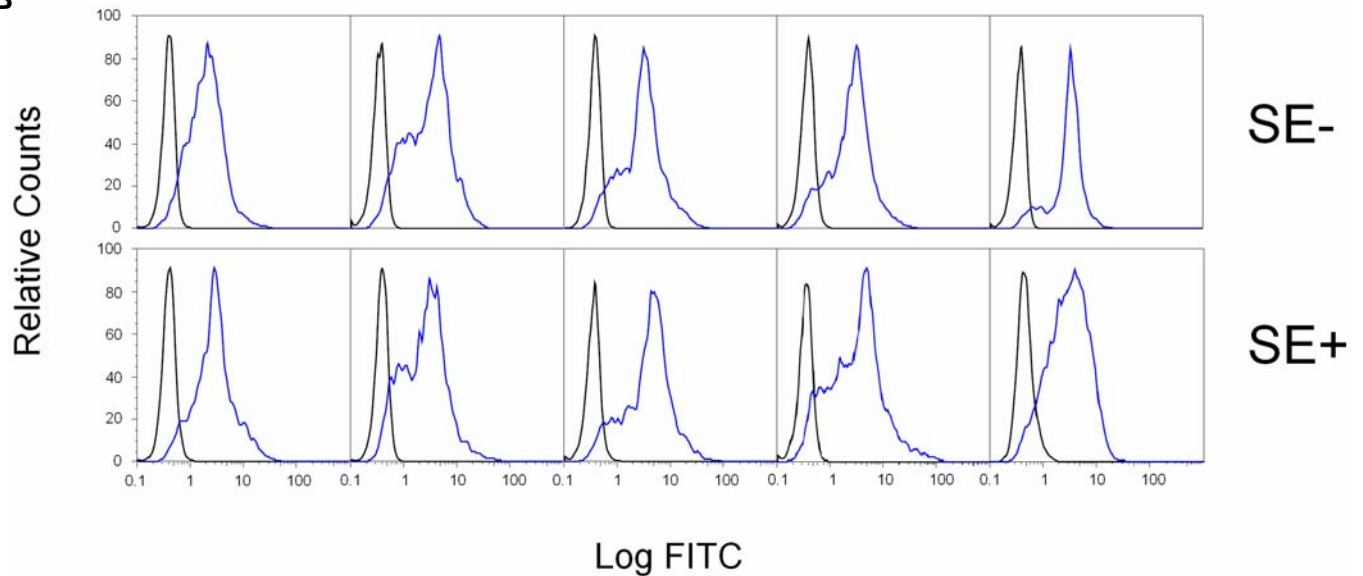


### Supplemental Figure 1

**A**



**B**



**Supplemental Figure 1. A**, different L cell lines were incubated for 1 hr at 4°C with FITC-conjugated mouse anti-HLA-DR antibody (Biosource) at a 1:100 dilution. Cells were washed twice and fixed with 1% formaldehyde. Fluorescence was measured using a Coulter Epics XL Cytometer. As can be seen, all transfectants (blue line) had equivalent levels of HLA-DR surface expression. Untransfected L cells (black line) showed negative staining. In **B**, Five randomly selected SE-negative EBV transformed B cell lines (upper panel) and 5 randomly selected SE-positive EBV transformed B cell lines (lower panel) were stained with either FITC-conjugated mouse anti- HLA-DR antibody as in **A** (blue line), or with isotype-matched control antibody (black line). As can be seen, SE-positive and SE-negative cells showed equivalent surface expression of HLA-DR molecules.