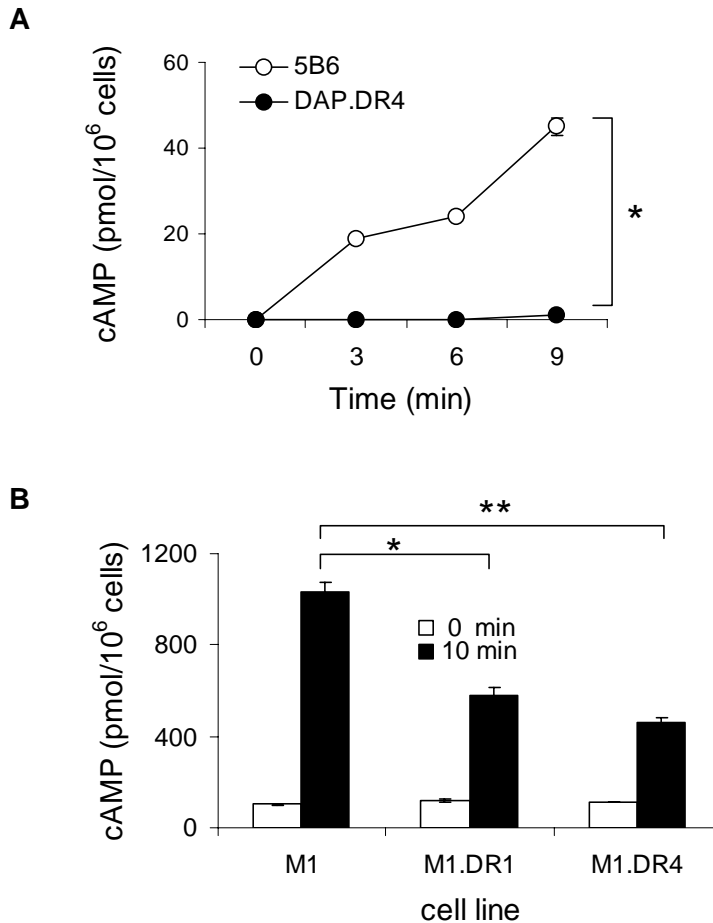


Supplemental Figure 2



Supplemental Figure 2. A, cAMP levels in L cell transfectants were measured at different times following stimulation with 25 μ M forskolin. As can be seen, 5B6 cells (L cells transfected with a vector containing the DR α sequence only, which does not allow surface expression of the DR molecule) had an intact cAMP response, while DAP.DR4 (L cell transfected with a vector encoding both the DR α and DR β^*0401 sequences) showed no response. *, $p < 0.05$. **B**. Untransfected M1 cells (M1), M1 cell transfectants expressing on their surface the DR β^*0101 (M1.DR1), or the DR β^*0401 (M1.DR4) molecules were stimulated for 10 min with 25 μ M forskolin and cAMP levels were measured. As can be seen, the SE-positive M1.DR1 and M1.DR4 lines had a markedly blunted cAMP response. *, $p < 0.05$; **, $p < 0.01$.