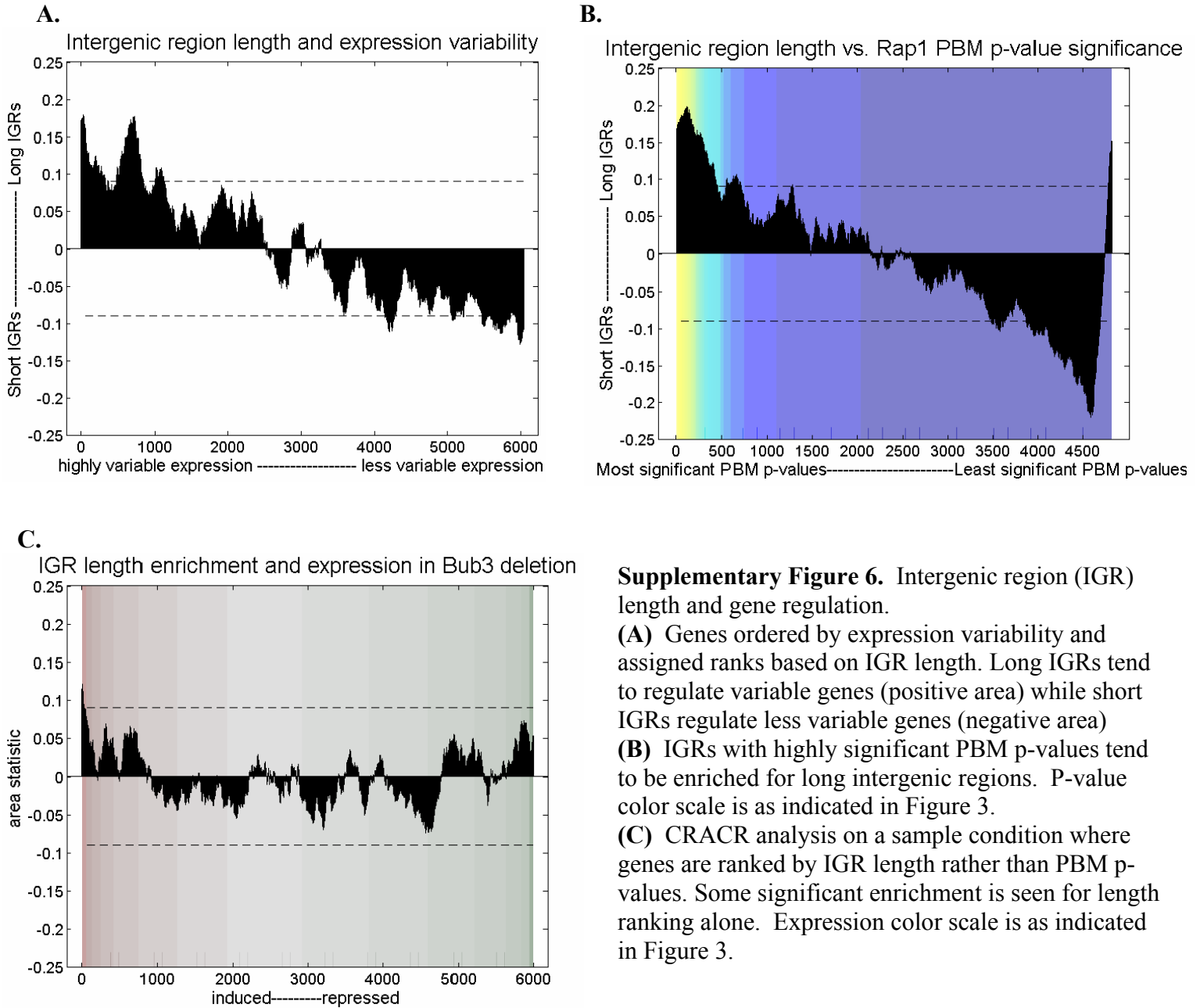


## Supplementary Figure 6



**Supplementary Figure 6.** Intergenic region (IGR) length and gene regulation.  
**(A)** Genes ordered by expression variability and assigned ranks based on IGR length. Long IGRs tend to regulate variable genes (positive area) while short IGRs regulate less variable genes (negative area)  
**(B)** IGRs with highly significant PBM p-values tend to be enriched for long intergenic regions. P-value color scale is as indicated in Figure 3.  
**(C)** CRACR analysis on a sample condition where genes are ranked by IGR length rather than PBM p-values. Some significant enrichment is seen for length ranking alone. Expression color scale is as indicated in Figure 3.