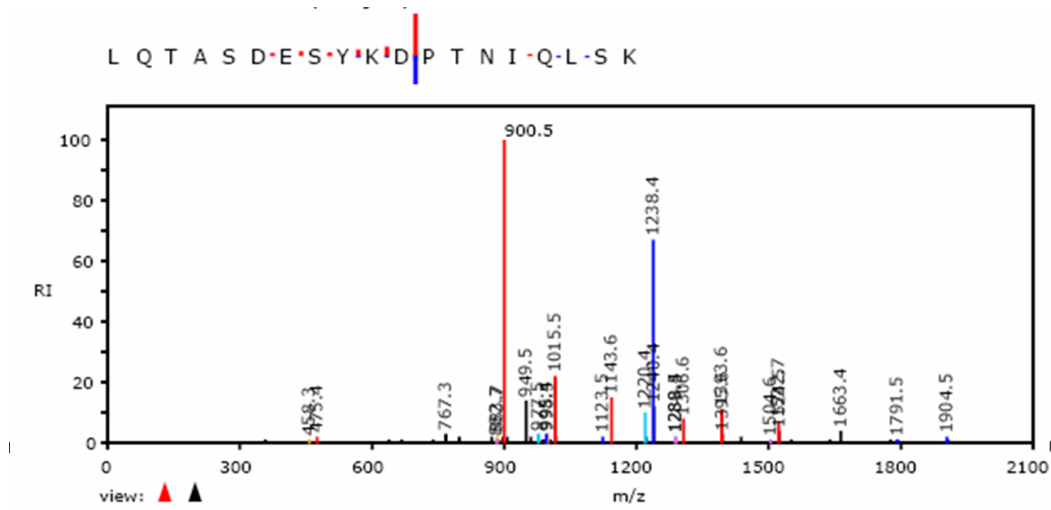
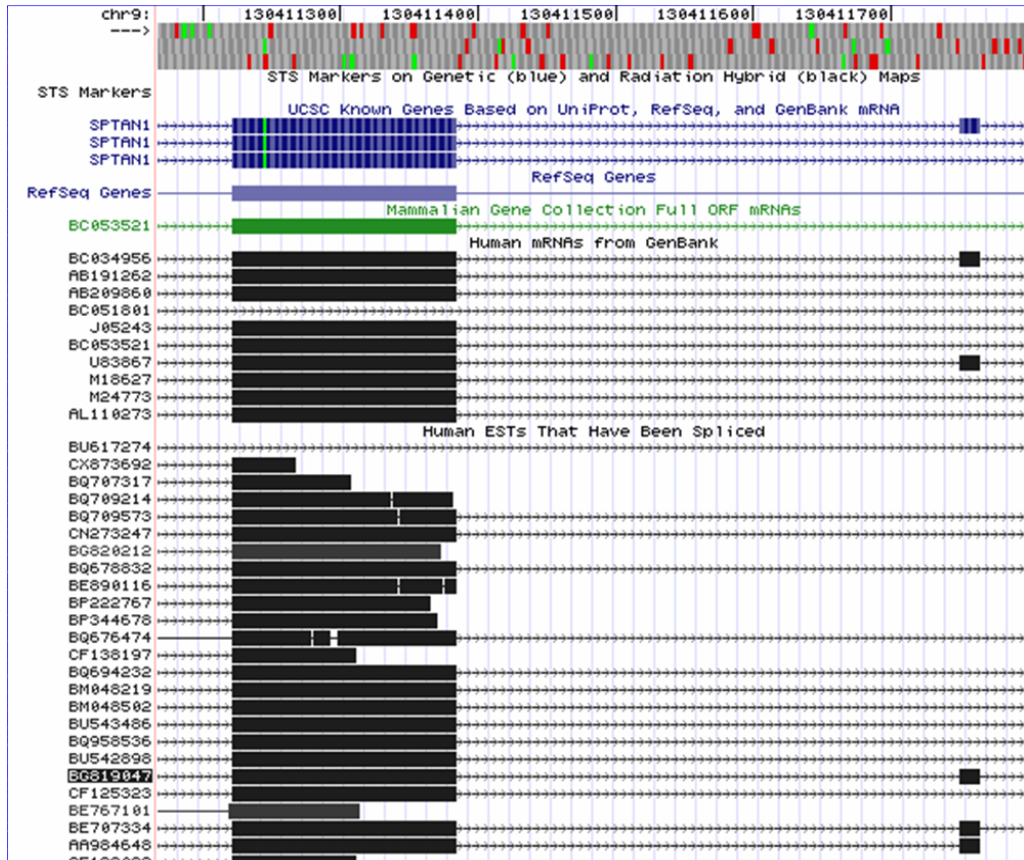


Supplemental Figure 1: MS/MS Spectrum from novel peptide TAGSPLCLPTPGAAPGSAGSC-SHR, found in PeptideAtlas dataset “raftaug”.



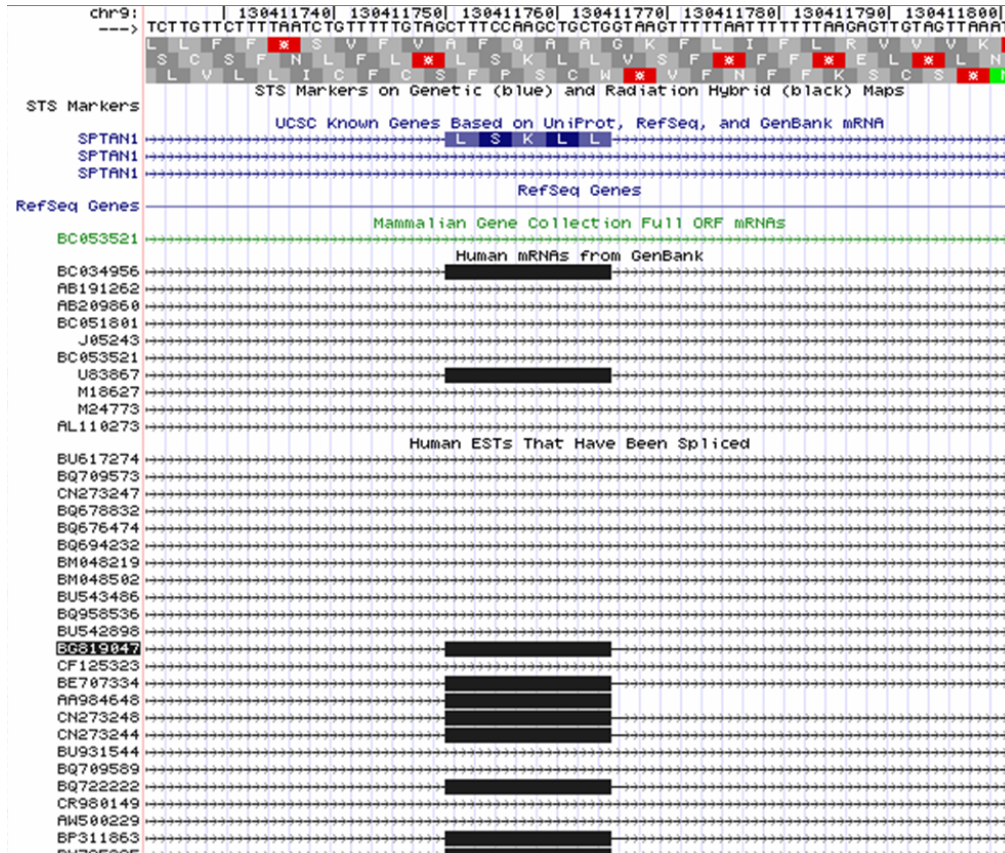
Supplemental Figure 4: MS/MS Spectrum from novel peptide LQTASDESYKDP T NIQLSK, found in PeptideAtlas dataset “raftflow”.



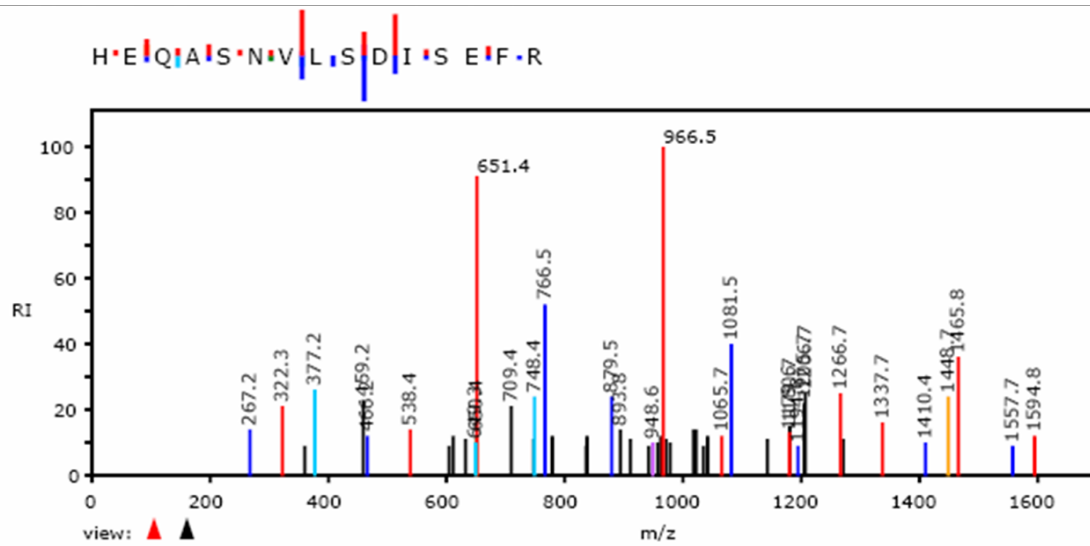
Supplemental Figure 5: UCSC genome browser screen-shot of region containing novel peptide LQTASDESYKDPTNIQLSK, found in PeptideAtlas dataset “raftflow”, showing micro-exon context.



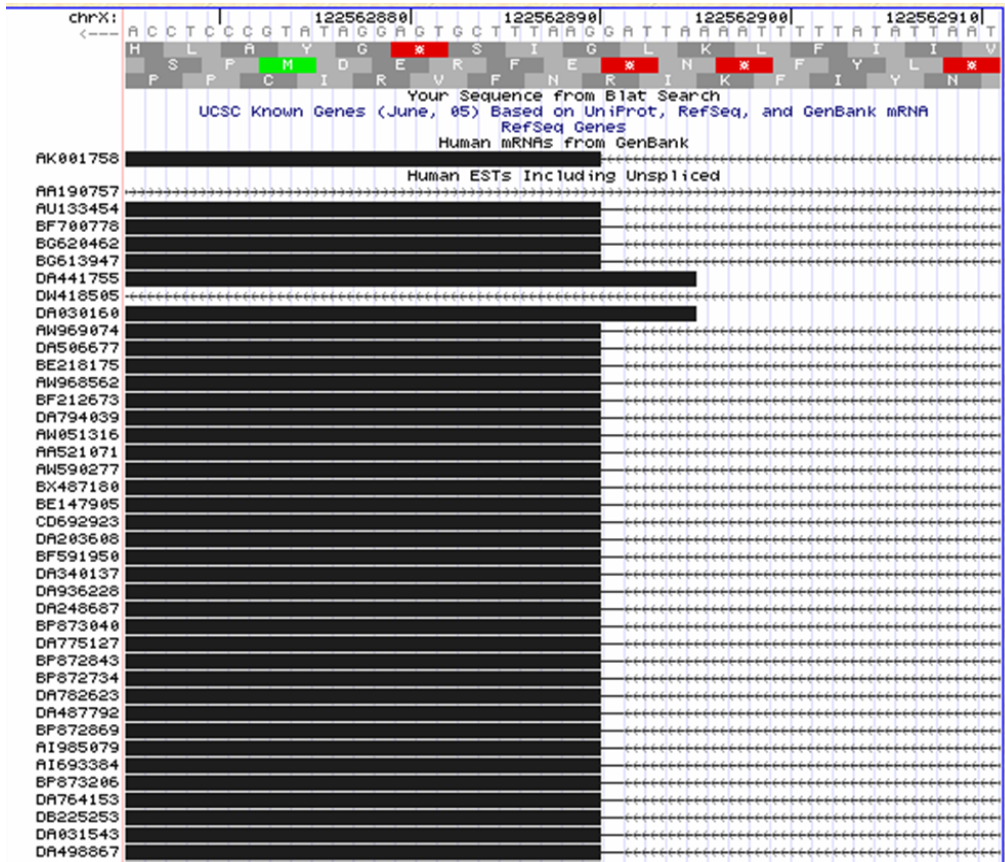
Supplemental Figure 6: UCSC genome browser screen-shot of region showing LQTAS-DESYKDPTNIQ from the 5' end of novel peptide LQTASDESYKDPTNIQLSK, found in PeptideAtlas dataset "raftflow".



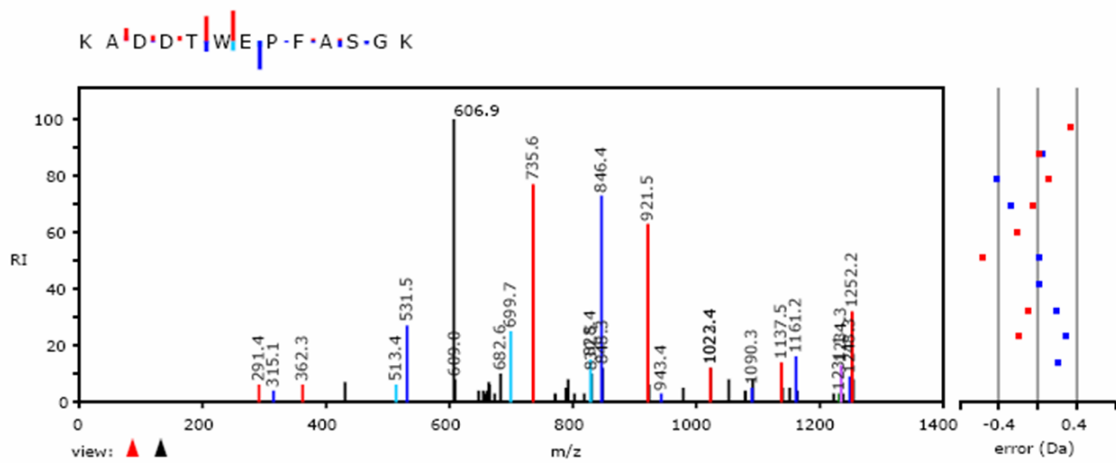
Supplemental Figure 7: UCSC genome browser screen-shot of region showing LSK from the 3' end of novel peptide LQTASDESYKDPTNIQLSK, found in PeptideAtlas dataset "raftflow".



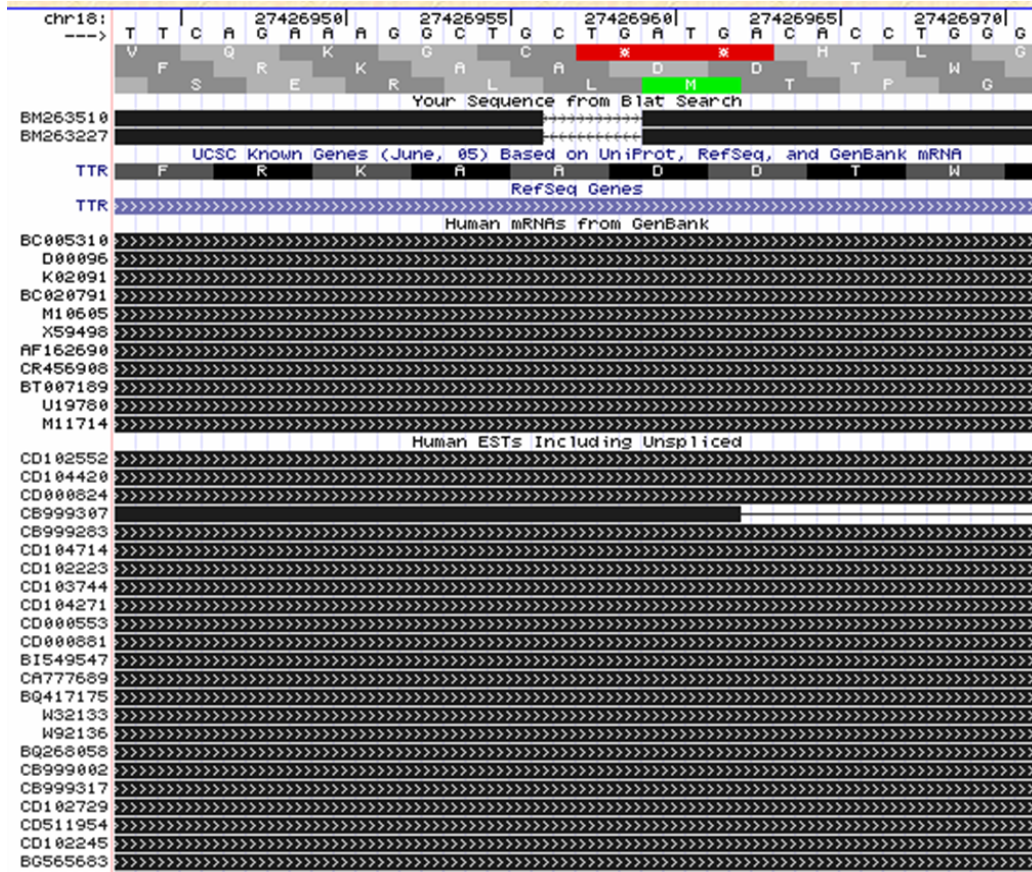
Supplemental Figure 8: MS/MS Spectrum from novel peptide HEQASNVLSLDISEFR, found in PeptideAtlas dataset A8_IP.



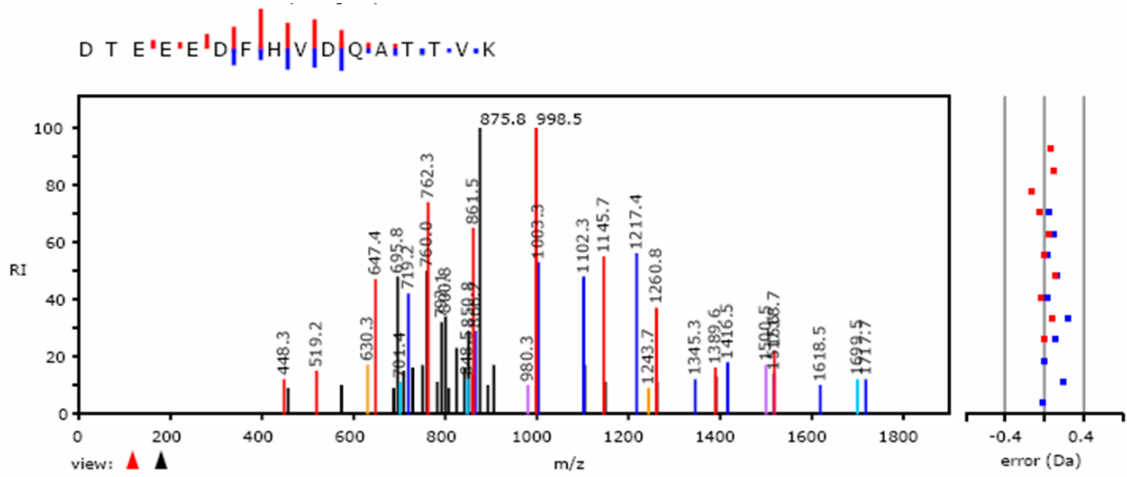
Supplemental Figure 10: UCSC genome browser screen-shot of region showing EFR from the 3' end of novel peptide HEQASNVLSDISEFR, found in PeptideAtlas dataset "A8_IP".



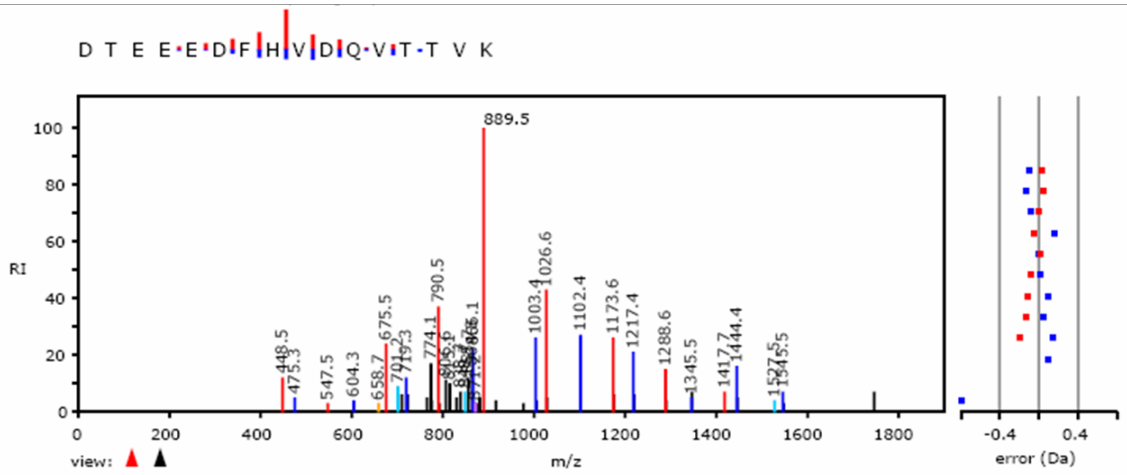
Supplemental Figure 11: MS/MS Spectrum from novel peptide KADDTWEPFASGK, found in HUPO PPP dataset “29_b1-EDTA_1”.



Supplemental Figure 14: UCSC genome browser screen-shot of region containing novel mutation in peptide KADDTWEPFASGK, found in HUPO PPP dataset “29_b1-EDTA_1”.



Supplemental Figure 15: MS/MS Spectrum from peptide DTEEEDFHVDQATTVK containing known coding SNP, found in HUPO PPP dataset from lab 40.



Supplemental Figure 16: MS/MS Spectrum from wild-type peptide DTEEEDFHVDQVTTVK found in HUPO PPP dataset 40.

