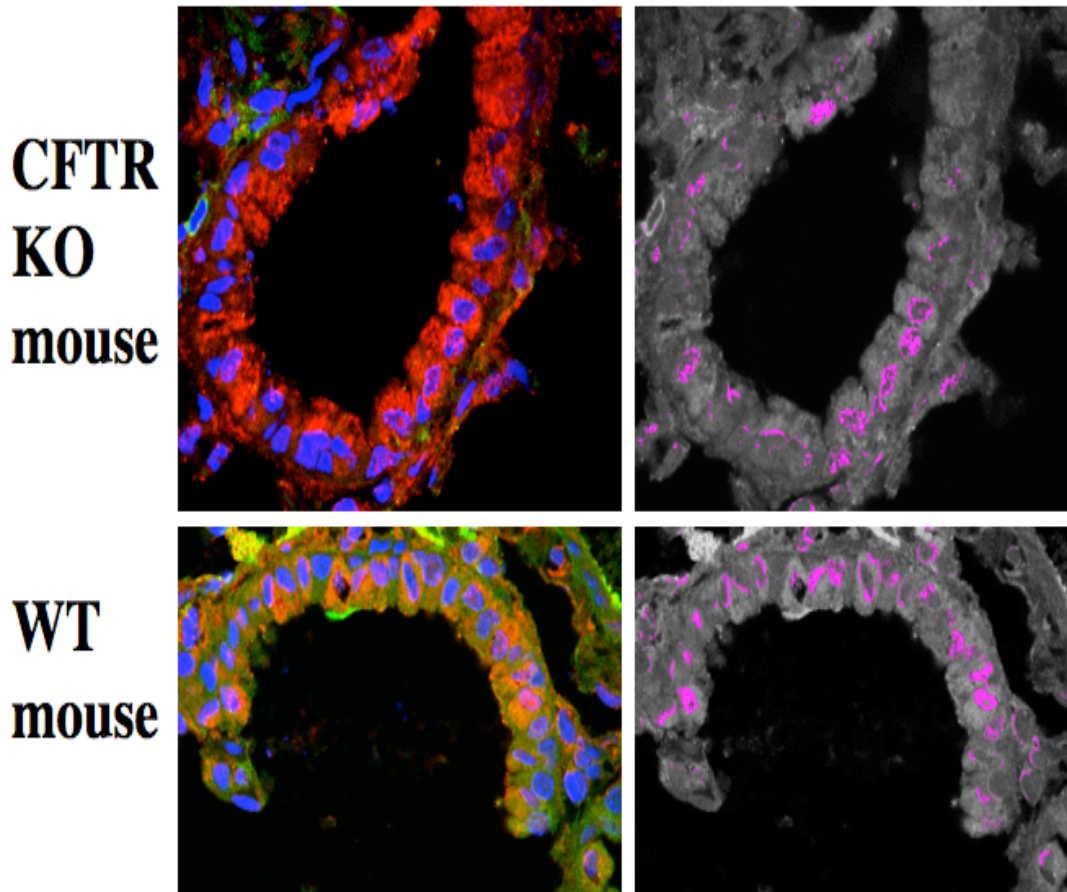


Supplemental Figure 1. ELISA binding curves showing serum antibody responses in WT and IL-1R knock-out (KO) mice infected for the indicated duration with *P. aeruginosa* strain PAO1. Data are shown for 5-6 mice at each time point, and data points represent mean  $\pm$  SEM. The 99% confidence intervals of the slopes of the curves for the reactivity of the sera from the IL-1R KO mice do not overlap with the slopes of the curves for the reactivity of the sera from the WT mice, indicating they are different at  $P < .01$ .



Supplemental Figure 2. Translocation of NF- $\kappa$ B to the nucleus of airway epithelial cells 18 h after intranasal infection of either CFTR knock-out (KO) or wild-type (WT) C57BL/6 mice with *P. aeruginosa* strain PAO1. Sections were stained for NF- $\kappa$ B (red), CFTR (green) and nuclear DNA (blue). Yellow/orange color in lower left panel represents overlap between cytoplasmic CFTR and cytoplasmic NF- $\kappa$ B. Right panels show co-localization of translocated nuclear NF- $\kappa$ B (red) and nuclear DNA (blue), represented as pseudo-colored magenta. Magnification was X 1000.