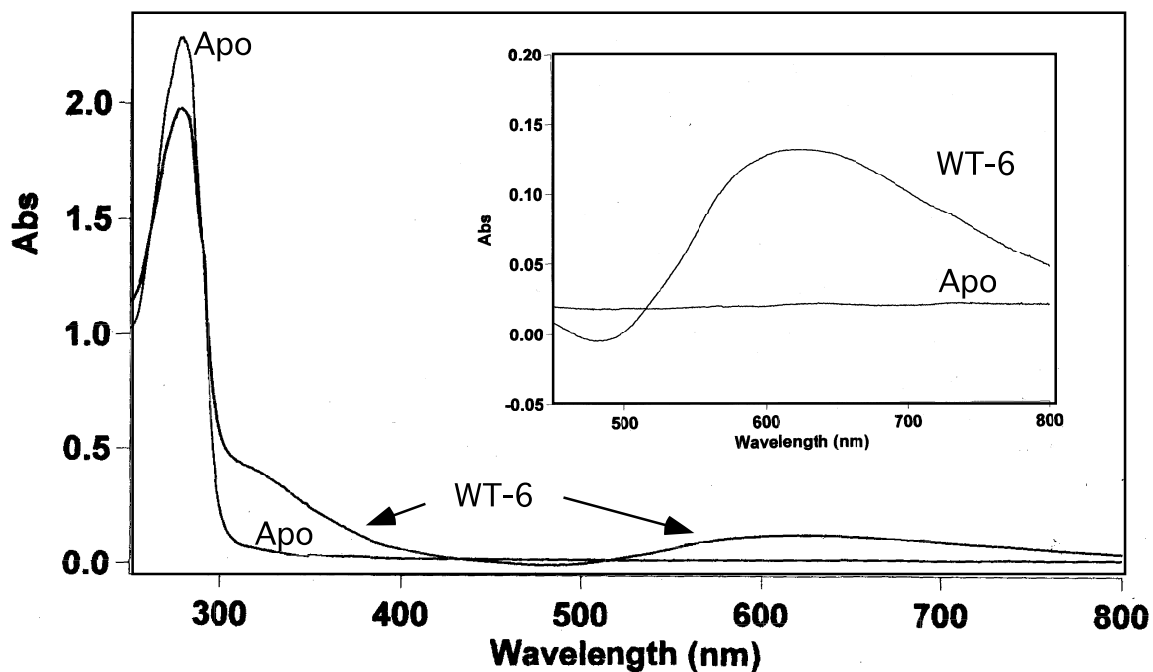


Supplementary Fig 1



Supplemental Fig.1. Comparison of absorption spectra of blue, iron-containing enzyme (WT-6) and colorless, iron-free (Apo) DOHH.

Absorption spectra were measured from 800 to 250 nm for purified wild-type DOHH enzyme solutions (~10 mg/ml) using a Cary 300 spectrophotometer with a 0.3 cm light path and a scan rate of 600 nm/min. The ratio of A₃₂₈ to A₂₇₈ for the iron-containing enzyme was 0.131:1.98. The inset shows an enlarged view of the region between 450 and 800 nm.