

Pool 60 insertional mutants with unique DNA "tag"

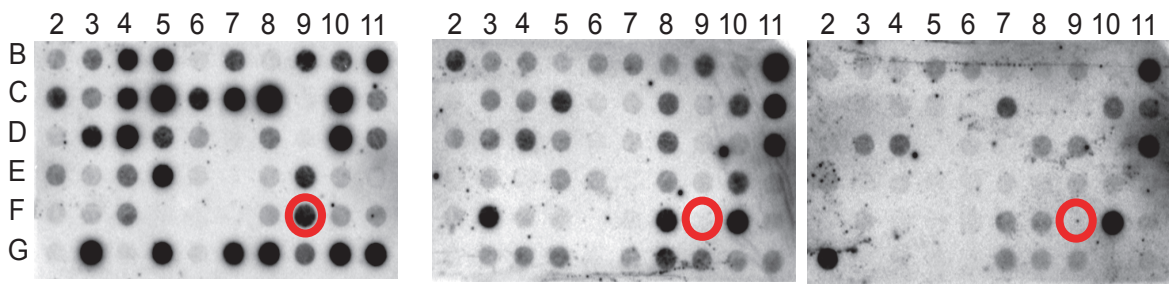
Grown in fibroblast
(non-restrictive)

Grown in mice
(restrictive)

Isolate DNA
Radiolabel "tag"



Probe identical
membranes

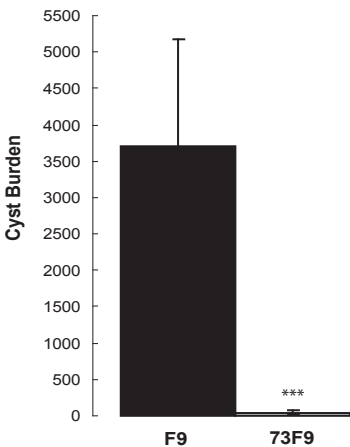


Cell culture

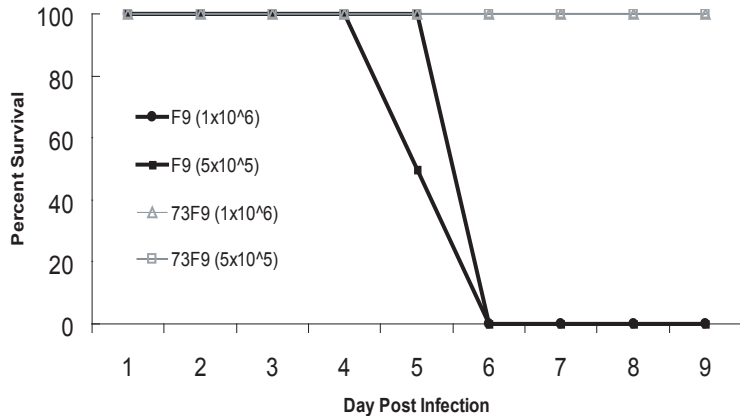
Mouse 1

Mouse 2

Clonal mouse infection



Chronic infection



Acute infection