

Supplemental Material:

Figure S1. Histological analysis of mid-term (21 day) fetuses derived from in vivo fertilization (control) and SCNT with fibroblasts as the nuclear donor. Two independent examples of 21 day clones are shown (NT-1 and NT-2). Whole mount photomicrographs are shown for each embryo in the left hand panel, followed by histologic sections to the right. (A) mandibular component of branchial arch; (B) heart; (C) lung bud; (D) hepatic primordium; (E) lumen of duodenum; (F) centrum of axis; (G) dorsal root ganglion; (H) third ventricle.

Table S1. Microsatellite genotyping of ferret DNA

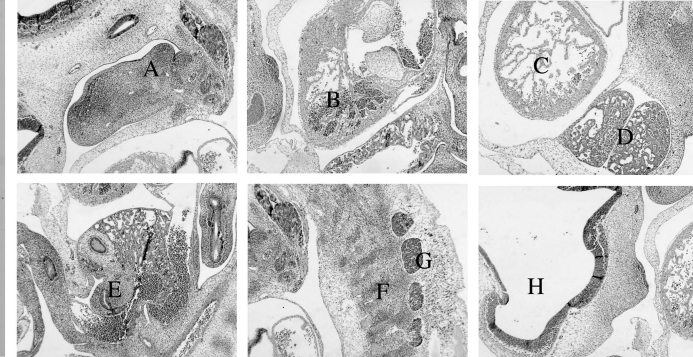
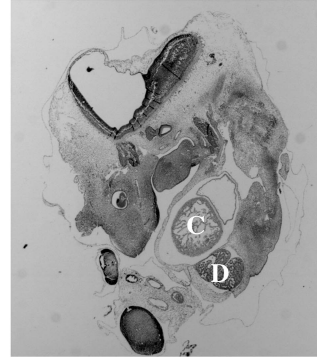
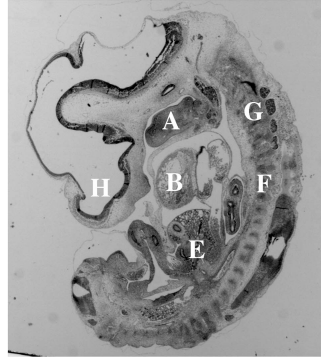
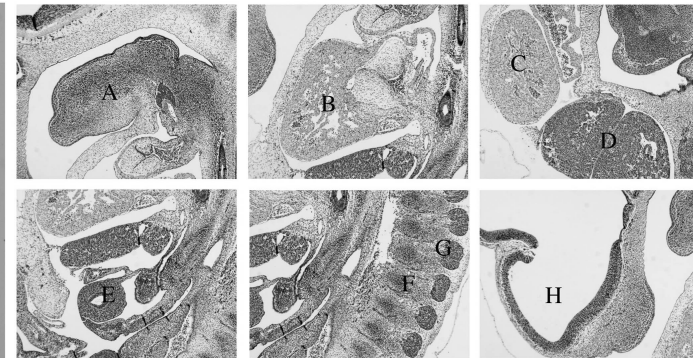
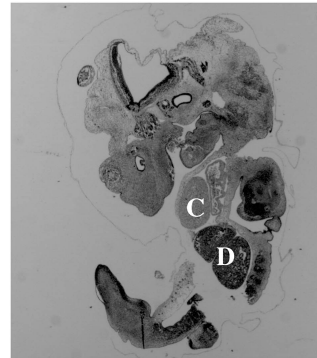
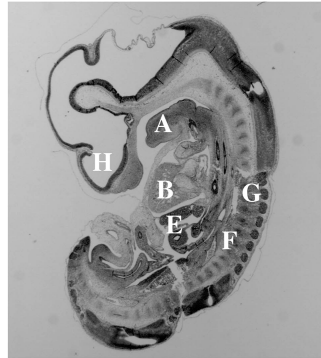
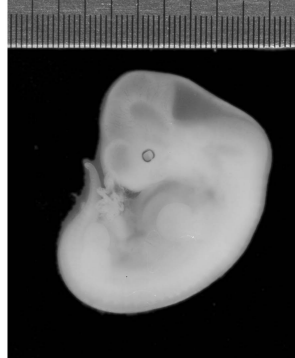
Ferrets and cells	Microsatellite DNA Markers										
	Mer022	Mvi87	G1A	Mvis072	Mvi232	Gg4	Mvis022	Mer095	Mvi57	Mvis075	Mer049
FCC1	245/245	78/78	162/162	269/271	155/155	ND	284/284	152/152	104/106	139/139	185/185
AL01	245/245	78/78	162/162	269/271	155/159	90/90	284/284	148/148	104/106	139/139	185/185
AL02	245/245	76/78	160/162	269/269	153/155	90/90	284/286	150/150	104/106	139/139	185/185
SA01	245/245	78/78	160/162	271/271	155/159	90/90	284/284	150/150	106/106	139/139	185/185
SA02	245/245	76/78	160/162	269/271	153/155	90/90	286/286	150/150	104/106	139/139	183/185
SA03	245/245	76/78	158/160	271/271	155/155	ND	284/284	152/152	104/106	139/139	183/185
SA04	245/245	87/89	160/162	269/271	153/155	ND	284/284	152/152	104/106	139/139	183/185
SA05	245/245	76/78	160/162	267/269	153/155	ND	284/286	152/152	104/106	139/139	183/183
SA06	245/245	76/78	160/162	271/271	151/153	ND	284/284	152/152	104/106	139/139	183/185
SA07	245/245	76/78	160/162	267/269	153/155	90/90	284/286	152/152	104/106	139/139	183/185
SA08	245/245	78/78	160/160	269/269	153/155	90/90	284/284	152/152	106/108	139/139	185/185
SA09	245/245	78/78	162/162	269/269	153/153	90/90	286/286	152/152	106/108	139/139	183/185
SA10	245/245	78/78	162/162	269/269	155/155	90/90	284/284	ND	106/106	139/139	185/185

AL01-AL02: unrelated albino fibroblasts; SA01-SA10: unrelated sable fibroblasts; ND: Not determined; FCC1: Ferret cumulus cells unrelated to cloned animals.

Whole Mount

Section
Plane 1Section
Plane 2

Organs

Control
21 DayNT-1
21 DayNT-2
21 Day