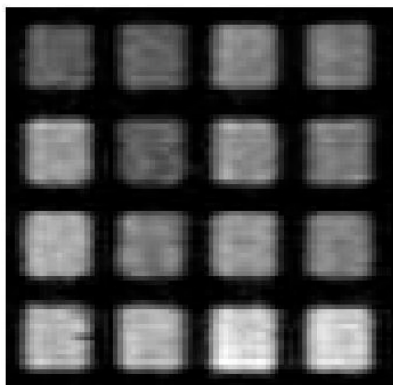


	$(\text{DPA-C}_2)_2$ -TPPS ₃ Mn		Mn-TPPS ₄	
	-Zn	+Zn	-Zn	+Zn
pH 6				
pH 7				
pH 8				
pH 8 + poly-CD				

T1 weighted



	$(\text{DPA-C}_2)_2$ -TPPS ₃ Mn		Mn-TPPS ₄	
	-Zn	+Zn	-Zn	+Zn
500 μM				
200 μM				
100 μM				
50 μM				

T2 weighted

