

SUPPLEMENTARY INFORMATION

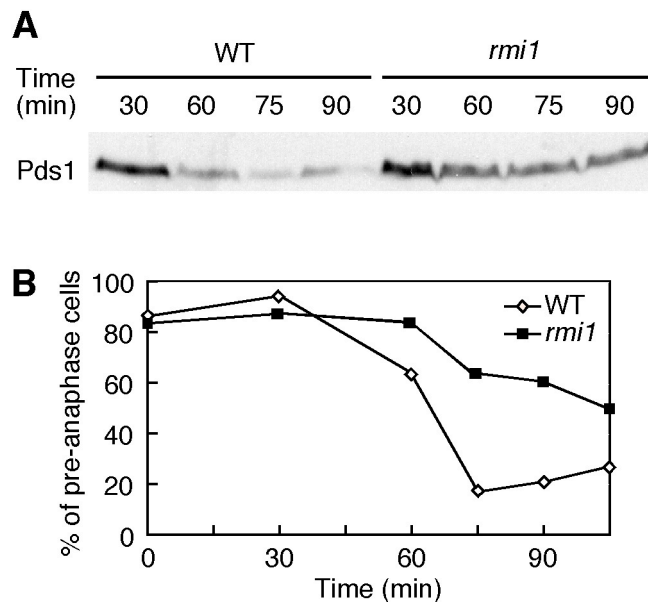


Fig S2 Pds1 is stable in *rmi1* cells. Wild type (YPH1477) or *rmi1* (YPH1477r1) cells expressing Pds1-13Myc were arrested in early S phase with hydroxyurea. The cells were then washed, released into YPD medium and samples were taken at the indicated time points and analyzed for Pds1-13Myc by western blot using anti-Myc (9E10) monoclonal antibody (A), and for cell morphology by DAPI staining (B).