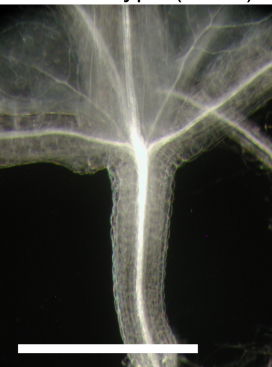
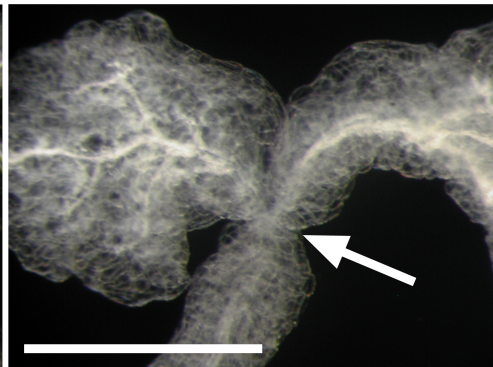


Wild type (Col-0)



tdt-1



Supplementary Figure 4. Pinched appearance of *tdt* cotyledon petioles. The hypocotyl-cotyledon junction of wild type is smooth, whereas in the *tdt* mutant it often showed a pinched appearance (white arrow) and cotyledons tended to fall off easily. Bars = 1 mm.