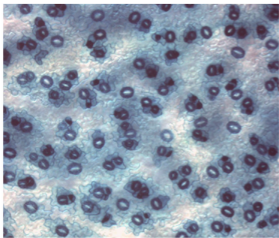
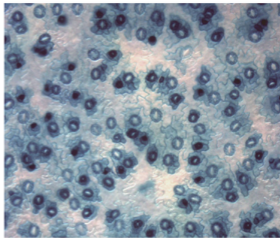


WT



35S:CYCD4;2



Supplemental Figure 4. *TMM* expression in leaves. The wild-type and *CYCD4;2*-OE plants that were transformed using the *Pro_{TMM}:GUS* construct were subjected to GUS staining. We then observed the abaxial epidermis in the first leaves at 12 days after germination. Bar = 100 μ m.