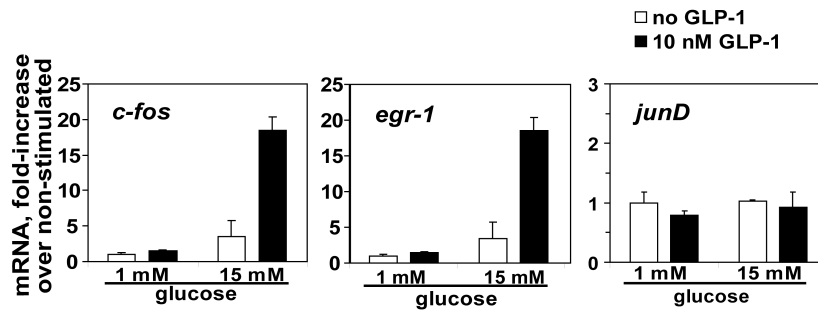


## Additional file 7



### Induction of IEGs in purified primary beta cells

FACS sorted beta cells (from dispersed islets) were cultured for five days to permit their aggregation in small clusters. Cells were serum deprived at low glucose concentration (1 mM) for 24 hours and stimulated with 15 mM glucose and/or 10 nM GLP-1 for 30 minutes. *c-fos*, *egr-1* and *junD* mRNA levels were quantified in triplicate by real-time RT-PCR, normalized with reference to 18S rRNA and shown as fold-increase over control conditions. Shown as mean of triplicates (error bar = s.d.).