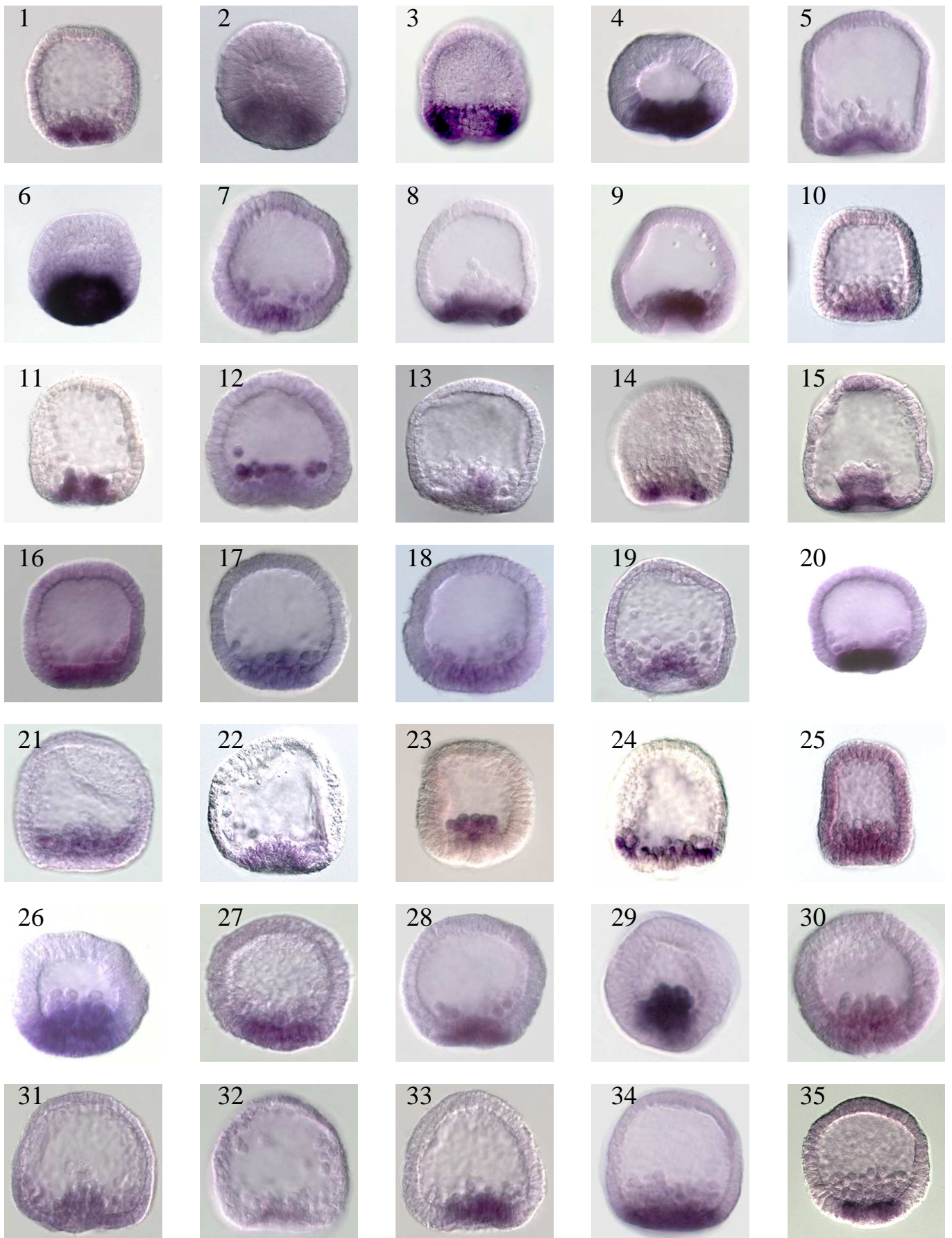
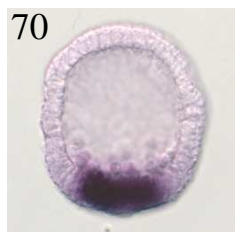
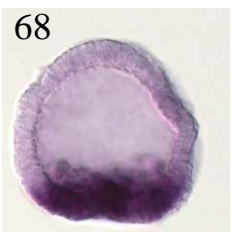
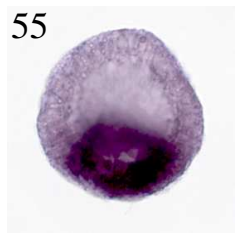
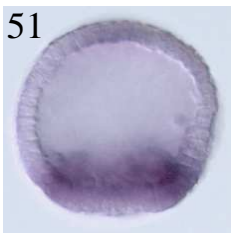
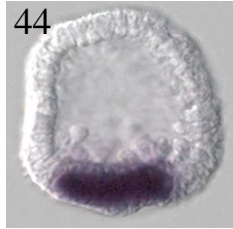
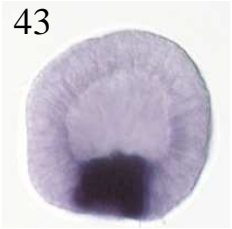
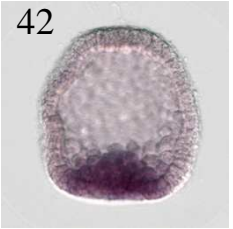
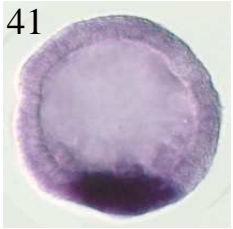
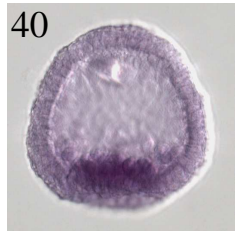
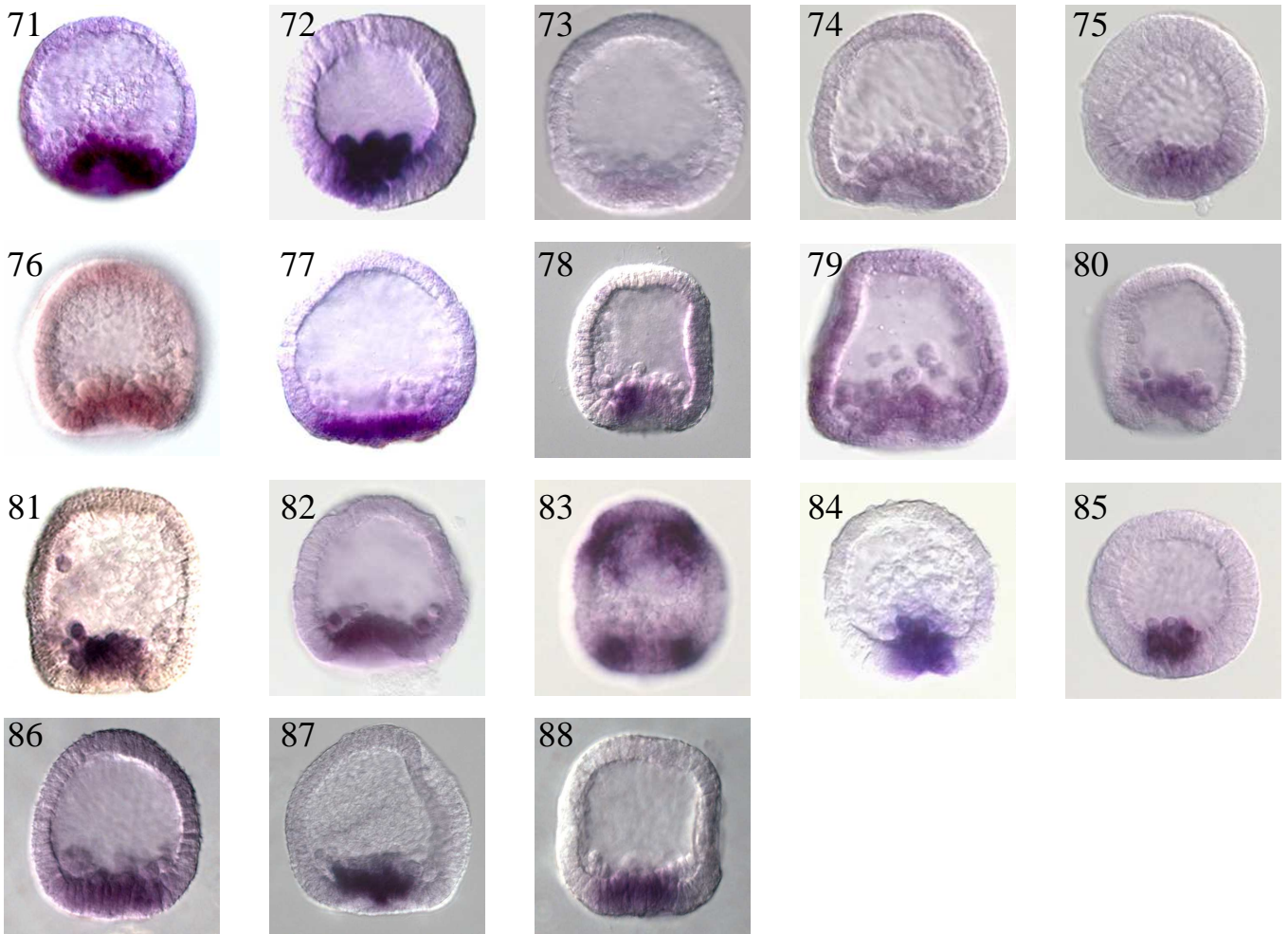


Fig. S1: WISH images of new endomesoderm genes in blastula stages







Clone names that can be used to query the WISH database and gene Ids are:

- 01 388_536REAsu4_4G6_blas2a.jpg similar to homeobox nanog? Or Adhesive plaque matrix protein VLPV
- 02 125_537REA_12I5_Blas_1a.jpg avidin
- 03 611_538REA_4O4_blas_1b.jpg dachshund
- 04 538_RUDIREA_2H10_14hr1d.jpg sox4
- 05 130_538REA_10H13_EGas_2a.jpg dead box rna helicase
- 06 541_537REA_2L11_blas_2a.jpg putative polyprotein
- 07 417_RUDIREA_5P3_LBlas_1a.jpg
proline serine threonine phosphatase interacting protein 1
- 08 714_RUDIREA_33H6_LBlas_2b.jpg smad interacting protein
- 09 599_RUDIREA_36N15_EGas_2a.jpg Sp-HNRPR
- 10 339_536REAsu4_17M6_blas_1a.jpg hypothetical protein human flj30760
- 11 340_536REAsu4_13J21_Egas_3a.jpg unknown serine rich
- 12 257_RUDIREA_24K20_LBlas_2a.jpg microtubule associated protein
- 13 635_538REA_3N5_LBlas_2a.jpg protein-tyrosine phosphatase alpha precursor
- 14 357_RUDIREA_2B6_blas_1a.jpg paraneoplastic neuronal antigen ma3
- 15 230_Rudirea_20C4_EGas_1a.jpg Frzb1
- 16 706_621REA_1N13_LBlas_1a.jpg amnionless protein precursor
- 17 455_RUDIREA_33A16_LBlas_1a.jpg pol polyprotein
- 18 453_RUDIREA_21N17_LBlas_1a.jpg elongation factor 1 gamma
- 19 569_RUDIREA_41G14_EGas_1a.jpg Sp-Vdac2
- 20 575_536REAsu4_16C15_Blas_2a.jpg Sp-Nit1

21 557_RUDIREA_28A7_LBlas_2a.jpg talin
22 016_537REA_15E20_30hr_1aX.jpg meta1
23 368_536REAsu4_14E6_Mblas_2a-17.jpg Sp-Fmo3
24 454_RUDIREA_26N21_20h_1aX.jpg Sp-Carbonic anhydrase-4-like-B
25 159_621REA_7A10_24hr_3aX.jpg Ariadne RNA binding protein
26 546_537REA_7F17_Lblast_8a.jpg Sp-Dao1
27 508_538REA_9C21_LBlas_1a.jpg mili (miwi like)
28 684_537REA_12B16_Blas_2a.jpg cofilin
29 472_536REAsu2_6M17_Blas_1a.jpg Sp-cyclophilin
30 667_536REAsu4_14A22_LBlas_2a.jpg B-cell translocation gene
31 602_RUDIREA_31P4_EGas_1a.jpg signal sequence receptor beta subunit
32 679_RUDIREA_2D4_LBlas_1a.jpg
sparc precursor (secreted protein acidic and rich in cysteine)
33 517_RUDIREA_20I10_LBlas_2a.jpg Sp-Acads
34 474_536REAsu2_8F9_LBlas_1a.jpg Sp-Noval1
35 237_Rudirea_19K21_LBlas_2a.jpg fimbrin
36 101_536REAsu2_6H4_LBlas_1a.jpg Sp-AN-like4
37 644_RUDIREA_14F18_LBlas_1a.jpg Transcription factor NTF-1 grainy head
38 436_RUDIREA_18I10_blas2a.jpg Sp-Cathepsin2
39 696_RUDIREA_31D14_LBlas_3a.jpg 40s ribosomal protein s2
40 240_Rudirea_21o23_LBlas_1a.jpg Sp-Six1/2
41 632_RUDIREA_10M1_Lblas_1a.jpg Sp-Hadha , 78 kda gastrin-binding protein
42 338_536REAsu4_14H13_Lblas_1a.jpg Sp-TRIO
43 550_537REA_15K13_Eblas_1a.jpg Sp-P19
44 703_537REA_9G14_LBlas_3a.jpg DMBT1
45 529_537REA_6J13_Egast_1a.jpg Sp-seawi
46 253_RUDIREA_21G8_Blas_1a.jpg microtubule associated protein PMC
47 658_RUDIREA_2L21_LBlas_3a.jpg 70 kda heat shock protein
48 603_RUDIREA_33E9_Lblas_2a.jpg Sp-Dmgdh
49 146_Rudirea_33K5_LBlas_3a.jpg fibropellin-like
50 419_Rudirea_9E15_EGas_1a.jpg Sp-Slc7a11 Cystine/glutamate transporter
51 451_RUDIREA_1B4_LBlas_1a.jpg SpMLCK myosin light chain kinase
52 694_RUDIREA_9I20_EGas_1a.jpg repeat?
53 155_536REAsu2_4L15_21hr_1aX.jpg Sp-Hmgcr Coenzym A reductase
54 675_RUDIREA_29E16_Blas_2a.jpg 90-kda heat shock protein hsp83
55 649_RUDIREA_27A7_Blas_1b.jpg, Gypsy polyprotein
56 681_621REA_1B17_Blas_2a.jpg presynaptic protein sap97
57 537_RUDIREA_36F9_Lblast_1a.jpg
Sp-WAP/IG growth and differentiation factor-associated serum protein 1
ADHESION PROTEIN Sp-WAP/IG/KU/C345C
58 585_RUDIREA_25B3_blas_1a.jpg peroxisomal bifunctional enzyme Sp-Ehhadh
59 394_Rudirea_28G3_EGas_1a.jpg Sp-Slc7a11 Cystine/glutamate transporter
60 512_RUDIREA_39H17_LBlas_1a.jpg
eukaryotic translation initiation factor 3 p42 subunit Sp-EIF3S4
61 92_536REAsu4_17J2_Blas_1a.jpg dlx
62 725_621Rea_14C17_LBlas_2a.jpg SuH
63 689_538REA_10O19_LBlas_2a.jpg
Sp-eIF3S5-like eukaryotic translation initiation factor 3 subunit 5
64 221_RUDIREA_13L18_blas1a.jpg snail
65 381_537Rea_13B9_LBlas_2a.jpg transcription elongation regulator 1
66 118_536REAsu4_13G16_LBlas_1a.jpg Flavin containing monooxygenase 6
67 662_536REAsu4_1F23_Mgast_3a.jpg penicillin binding protein ?
68 175_537REA_13G10_blas1a.jpg
ubiquitin ligase protein mib2 putative nf-kappa-b-activating protein mind bomb2
69 677_537REA_6D22_Blas_1a.jpg Sp-Aldoa fructose-bisphosphate aldolase 2
70 219_RUDIREA_15N17_Eblas3a.jpg Prox1

71 645_RUDIREA_17J13_Egast_2b.jpg pol-like peptide
72 260_RUDIREA_24K14_Egast_3a.jpg c-fos
73 688_537REA_16H4_LBlas_4a.jpg Sp-Cant1 apyrase

74 617_537REA_16I22_EGas_1a.jpg
eukaryotic translation initiation factor 3 subunit 6
75 570_RUDIREA_34J12_Blas_3a.jpg
Sp-carboxypeptidaseD-like carboxypeptidase d
76 144_RUDIREA_28K19_24hr_1aX.jpg Chaperonin precursor
77 651_RUDIREA_30O18_Lblast_4a.jpg
retinitis pigmentosa 2 ?? GLEAN3_26946 Scaffold90366
78 403_RUDIREA_29D01_LBlas_2a-28.jpg Tbx6
79 672_RUDIREA_39G20_LBlas_1a.jpg vacuolar sorting protein 35
80 423_RUDIREA_12G12_LBlas_1b.jpg Sp-ELAV-like elav-like3
81 062_RUDIREA_14B4_30hr_1a_VX.jpg polycystin-like2
82 600_RUDIREA_37F4_Blas_2a.jpg lysine hydroxylase
83 245_SpSMBLAS_47F18_Egas2b.jpg six3
84 297_SpSMBLAS_127O24_Lblast_1a.jpg Sp-papss
85 244_SpSMBLAS_124N22_Eblas1a.jpg Hex
86 461_536Reasu4_3B3_LBlas_1a.jpg Neuro-oncological ventral antigen 1
87 720_Rudirea_21I02_LBlas_3a.jpg Sp-astacin protease 1
88 460_536Reasu4_1D7_LBlas_3a.jpg alpha-mannosidase