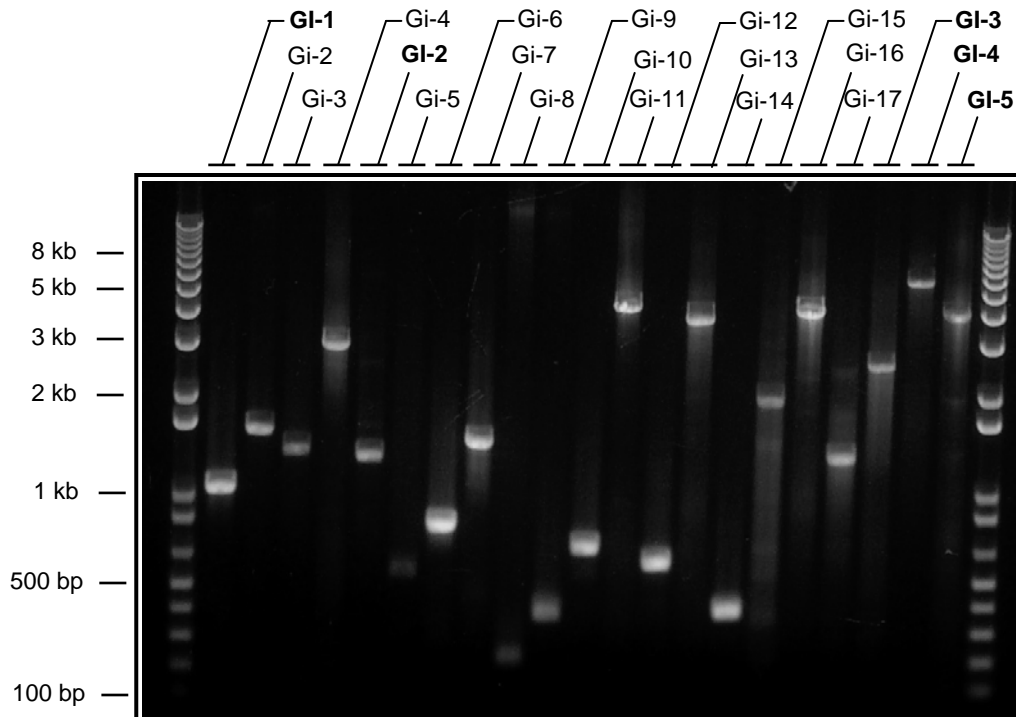


## PCR VERIFICATION FOR GENOMIC ISLANDS – PRIMERS USED AND GEL IMAGES

**Table S1: Primers used for PCR verification of Genomic Islands**

Genomic island <sup>a</sup>	Left primer (5'-3')	Right primer (5'-3')
<b>GI-1</b>	TAGCTGATGAGGATCACCAGGTCAC	AAGATCGCGAGTATCGAGACCTATC
Gi-2	TGCTCGGGTACGTGTTCAG	AGGTGCTGGTGTGGGAGAT
Gi-3	GGTGAAGTAGATGTGGTTCATCAGG	ACCCGTACCAGATGGTCAAGGAC
Gi-4	GCTGTAGTCGAGGACGCTCAGGT	GGTGGAGTACGACCAGGAGTATGTC
<b>GI-2</b>	GCCGGGAGACCGACCTCTAC	CGGTGCCGGTCTTTTCGAC
Gi-5	ATCACAGAGCAGTTCGGTGGTACG	GCTGGTTGTAGAAGACGAAGTCACC
Gi-6	GAGGTTCTGTATCGACGCCTACT	GAGAAGGTGATGGTGTACGTGAAGG
Gi-7	ATGAACGAGTCGGCACATTCCAC	CTGAACAGGTACGCGTGATTGAC
Gi-8	AACTCAACGCCGAGTTCAAG	GGTGGTCTCCTTCGAGATGT
Gi-9	AGAGTGGGCCAGCAGAACT	GCGTAGTCGAGTGCTGACC
Gi-10	ACCTACTCCCCGGTCTTCAC	ACGAACTACCAAGCAGGTC
Gi-11	ACCTTCGAGACGATGTCGAAACTG	GACGAGATCTTCGACGTCTACCTG
Gi-12	TAGGCTCACTCGAGCTATCCATCCT	ACTTCCAGACACTCGGCACCATC
Gi-13	ATCCAGACCCACGGAGGAG	GTCTTGTACGACCCGCACAG
Gi-14	CTCGAAGTAGGACGTGGAGAACAG	GAATGTGAGTTCTCCGGGCTTAG
Gi-15	CTGGGCGTAGGGCTGGTTG	ACCATGGTGTGTCGTCCAGGTA
Gi-16	ATCAGCCCGCAGGAGTACC	CGGTGACGTAGACCAGTTTCG
Gi-17	CGGTCGCCTGGACCTCAAC	GGCTGACCCTCGCCTACCTG
<b>GI-3</b>	ATGCGCGTGGTGTTCGTG	GCGTTCAGCCCGAGTCC
<b>GI-4</b>	AAGGAGAAGTGGTCCCTGAAAGC	AGGCTGAACTCCAGGTCCTGTC
<b>GI-5</b>	CTCGAACACTCTCGGACGACTT	GAAGTAGGAGGCGCAGTAGACCAG

<sup>a</sup> PCR products for Gi-1 and Gi-18 which are close to the chromosome ends could not be amplified (possibly due to genome rearrangements that might have occurred in *S. lividans*). Hence those primers are not shown here.



**Figure S1: Gel electrophoresis image of PCR products amplified from *S. lividans* genomic DNA using primers listed in Table 1**