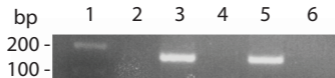


a

GAAT TCGGCTTAGGCCAGCAGAGA ACCGACATG GAATT GCTTCGCTTCTCGCTGCTGCTC
 AT CCAGT CATG GCTGGG GCCCGTGCAG TTCTCAGCAGGAT TTTCACCAACAG CCTGAT GT
 TCGGCACCTCGG ACCGTGTCTATGAGAA ACTGAA GGACCTGG AAGAGGG AA GCCGAA

b