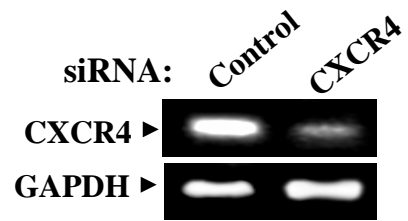
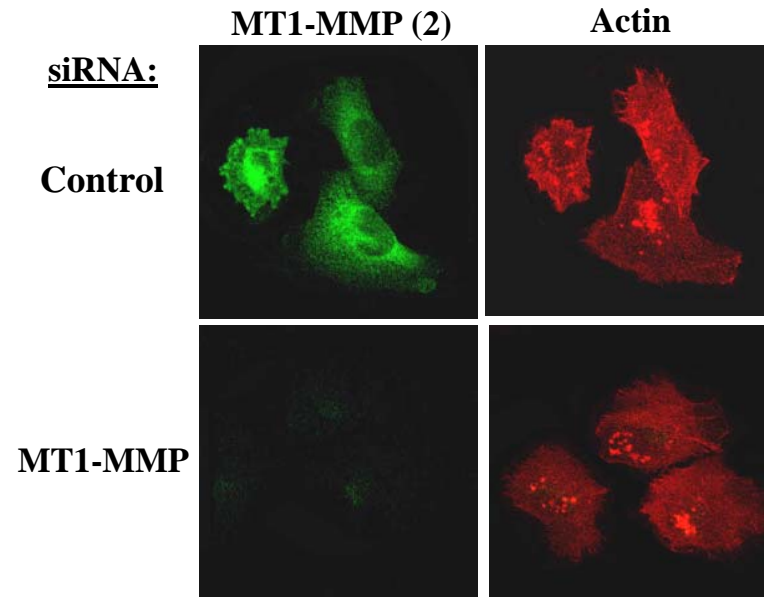
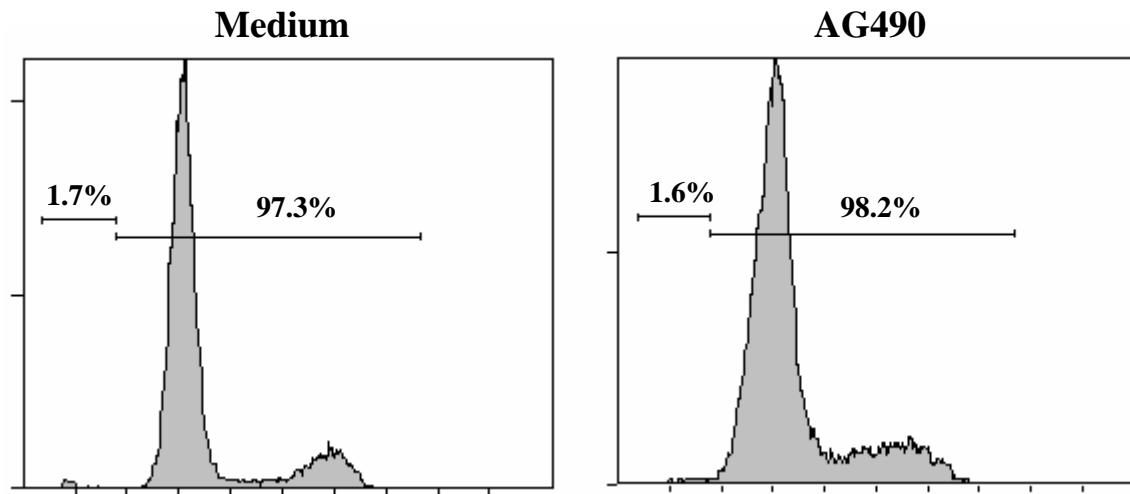
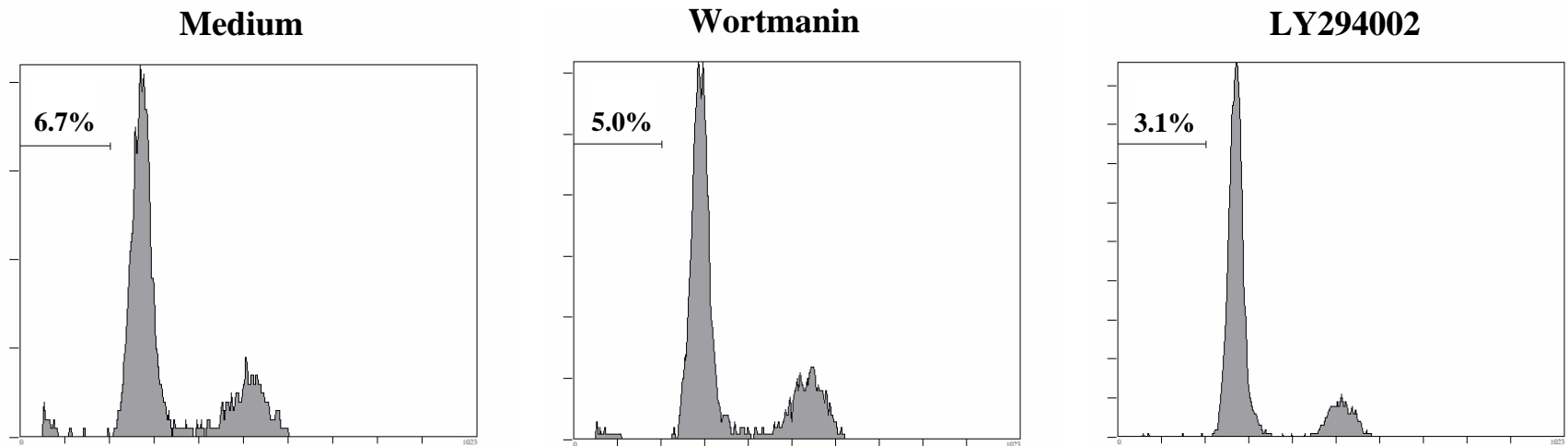


SUPPLEMENTAL MATERIAL

Figure 1. Transfection of BLM melanoma cells with siRNA for CXCR4 and MT1-MMP. BLM cells were transfected with control, CXCR4 or MT1-MMP siRNA and expression of CXCR4 was subsequently analyzed by RT-PCR (A), whereas MT1-MMP expression was monitored by confocal microscopy, using anti-MT1-MMP mAb. In confocal images, MT1-MMP and actin expression is shown in equivalent cell sections corresponding to representative fields. DIC images confirmed the presence of cells (not shown).

Figure 2. Cell cycle analyses of BLM cells treated with AG490, wortmanin and LY294002. Cells were treated for 24 h with AG490 (25 μ M), wortmanin (100 nM) or LY294002 (25 μ M) followed by cell cycle analyses by flow cytometry to test potential induction of apoptosis. As shown, none of these inhibitors significantly altered cell cycle as compared with untreated controls (Medium).

A**B**

A**B****Supplementary figure 2**